

FINGAL COUNTY OUTDOOR RECREATION PLAN 2025 – 2030 SEA SCREENING REPORT

BSM

Est.
1968

**Brady Shipman
Martin**

**Built.
Environment.**

Strategic Assessment **Built Environment**

Client:

Fingal County Council

Date:

12 May 2025

DOCUMENT CONTROL SHEET

7079_RP01_SEA Screening Report

Project No. 7079
Client: Fingal County Council
Project Name: Fingal County Outdoor Recreation Plan 2025 – 2030
Report Name: SEA Screening Report
Document No. RP01
Issue No. 01
Date: 12/05/2025

This document has been issued and amended as follows:

Issue	Status	Date	Prepared	Checked
01	Draft	12 May 2025	NK	TB



Contents

1	Introduction	2
2	Strategic Environmental Assessment (SEA)	2
2.1	Introduction.....	2
2.2	SEA Screening.....	3
2.3	Requirement for SEA Screening.....	3
2.3.1	SEA Guidance.....	4
2.4	Appropriate Assessment (AA).....	5
2.5	Consultation.....	6
3	Description of the Fingal County Outdoor Recreation Plan 2025-2030	7
3.1	Strategic Objectives.....	7
3.1.1	Leadership & collaboration.....	7
3.1.2	Environment & heritage.....	8
3.1.3	Access & infrastructure.....	8
3.1.4	Awareness.....	9
3.1.5	Opportunities.....	9
3.1.6	Expertise.....	9
4	Description of the receiving environment	10
4.1.1	European sites.....	11
4.1.2	Other designated areas (other than European sites).....	12
5	Planning Context	15
5.1	International.....	15
5.2	National.....	15
5.3	County.....	15
6	Screening for Requirement for SEA	16
7	Recommendation on Requirement for SEA	21
8	References	22
Appendix 1:.....Screening of Strategy & List of		
	Actions.....	23

1 Introduction

Fingal County Council (FCC) has prepared the *Fingal County Outdoor Recreation Plan 2025-2030* that provides an opportunity for a more collaborative approach towards optimising the positive impacts of outdoor recreation. Several national and global trends have informed the formulation of this Plan. The Plan includes a framework set out under six strategic objectives and sets out priorities and actions for the next five years in County Fingal.

Brady Shipman Martin (BSM) has been appointed by Fingal County Council to carry out screening for Strategic Environmental Assessment (SEA) and Appropriate Assessment (AA) in respect of the *Fingal County Outdoor Recreation Plan 2025-2030* (hereafter either the ‘Outdoor Recreation Plan’ or the ‘Plan’).

This report documents the screening exercise for SEA in respect of the Outdoor Recreation Plan for the purposes of consultation, in accordance with Article 9(7) of S.I. 435 of 2004 (the European Communities (Environmental Assessment of Certain Plans and Programmes) Regulations 2004), as amended by S.I. 200 of 2011.

This SEA Screening should be read in conjunction with the *Fingal County Outdoor Recreation Plan 2025-2030* and the Appropriate Assessment (AA) Screening Report (prepared by Brady Shipman Martin, 2025).

2 Strategic Environmental Assessment (SEA)

2.1 Introduction

Directive 2001/42/EC¹ of the European Parliament and of the Council on the assessment of the effects of certain plans and programmes on the environment (the ‘SEA Directive’) requires EU Member States to assess the ‘likely significant environmental effects’ of plans and programmes prior to their adoption. This provides for the assessment of strategic environmental considerations at an early stage in the decision-making process.

Article 1 of the SEA Directive states that:

“The objective of this directive is to provide for a high level of protection of the environment and to contribute to the integration of environmental considerations into the preparation and adoption of plans and programmes with a view to promoting sustainable development, by ensuring that, in accordance with this directive, an environmental assessment is carried out of certain plans and programmes which are likely to have significant effects on the environment.”

The SEA Directive was transposed into Irish law through:

- Statutory Instrument (S.I.) No. 435 of 2004 (the European Communities (Environmental Assessment of Certain Plans and Programmes) Regulations 2004), as amended by S.I. No. 200 of 2011 (the European Communities (Environmental Assessment of Certain Plans and Programmes) (Amendment) Regulations 2011); and
- S.I. No. 436 of 2004 (the Planning and Development (Strategic Environmental Assessment) (Amendment) Regulations 2004), as amended by S.I. No. 201 of 2011 (the Planning and Development (Strategic Environmental Assessment) (Amendment) Regulations 2011).

S.I. No. 435 of 2004, as amended by S.I. No. 200 of 2011, relates to SEA as it applies to plans or programmes prepared for “agriculture, forestry, fisheries, energy, industry, transport, waste management, water management, telecommunications, tourism and town and country planning or land use”².

¹ SEA Directive: <https://eur-lex.europa.eu/legal-content/EN/TXT/PDF/?uri=CELEX:32001L0042&from=EN>

² See Section 9(1)(a)

S.I. No. 436 of 2004, as amended by S.I. No. 201 of 2011, relates to SEA as it applies to plans or programmes where the context requires, “a development plan, a variation of a development plan, a local area plan (or an amendment thereto), regional planning guidelines or a planning scheme”³.

As a non-statutory plan, the *Fingal County Outdoor Recreation Plan 2025-2030* is being screened for the requirement for SEA under the requirements of S.I. No. 435 of 2004, as amended by S.I. No. 200 of 2011.

2.2 SEA Screening

Article 3(4) of the SEA Directive requires that “Member States shall determine whether plans and programmes, other than those referred to in paragraph 2, which set the framework for future development consent of projects, are likely to have significant environmental effects.” This process for deciding whether a particular plan, other than those for which SEA is mandatory, would be likely to have significant environmental effects and, therefore, would require SEA, is known as ‘screening’.

The criteria for screening, i.e. determining whether a particular plan is likely to have significant environmental effects are set out in Annex II of the SEA Directive. These criteria are reproduced in Schedule 1 of S.I. No. 435 of 2004, as amended by S.I. No. 200 of 2011. The criteria are set out under two principal headings, each of which have a number of sub-criteria (refer to [Section 6](#) of this report):

- Characteristics of a Plan / Programme; and
- Characteristics of the effects and of the area likely to be affected.

Article 9(1) of S.I. No. 435 of 2004, as amended by S.I. No. 200 of 2011, states that:

“Subject to sub-article (2), an environmental assessment shall be carried out for all plans and programmes:

- (a) which are prepared for agriculture, forestry, fisheries, energy, industry, transport, waste management, water management, telecommunications, tourism and town and country planning or land use, and which set the framework for future development consent of projects listed in Annexes I and II to the Environmental Impact Assessment Directive, or*
- (b) which are not directly connected with or necessary to the management of a European site but, either individually or in combination with other plans, are likely to have a significant effect on any such site.”*

Article 9(2) of S.I. No. 435 of 2004, as amended by S.I. No. 200 of 2011, further states that:

“A plan or programme referred to in sub-article (1) which determines the use of a small area at local level or a minor modification to a plan or programme referred to in sub-article (1) shall require an environmental assessment only where the competent authority determines that it is likely to have significant effects on the environment and, for this purpose, the competent authority shall make any necessary determination.”

2.3 Requirement for SEA Screening

The *Fingal County Outdoor Recreation Plan 2025-2030* is a non-statutory land use plan and is being screened for the requirement for SEA in accordance with the requirements of:

- The SEA Directive, particularly Articles 3(3), 3(4) and 3(5) in relation to ‘screening’; and
- The European Communities (Environmental Assessment of Certain Plans and Programmes) Regulations 2004 (S.I. No. 435 of 2004), as amended by the European Communities (Environmental Assessment of Certain Plans and Programmes) (Amendment) Regulations 2011 (S.I. No. 200 of 2011), particularly Schedule 1, which sets out the “Criteria for determining whether a plan or programme is likely to have significant effects on the environment”.

³ Section 5(c)

This report constitutes a screening of the Plan for the requirement for SEA in accordance with the above legislation.

2.3.1 SEA Guidance

The following principal sources of guidance were used in the SEA process including in the preparation of this Environmental Report:

- Directive 2001/42/EC on the assessment of certain plans and programmes on the environment.
- S.I. No. 435 of 2004 – European Communities (Environmental Assessment of Certain Plans and Programmes) Regulations 2004.
- S.I. No. 200 of 2011 -Environmental Communities (Environmental Assessment of Certain Plans and Programmes) (Amendment) Regulations 2011.
- Planning and Development Regulations 2001, as amended.
- Guidance on Implementation of Directive 2001/42/EC, European Commission, 2004, at: http://ec.europa.eu/environment/archives/eia/pdf/030923_sea_guidance.pdf
- Strategic Environmental Assessment Guidelines for Regional Assemblies and Planning Authorities, Department of Housing, Local Government and Heritage, 2022.
- SEA of Local Authority Land Use Plans - EPA Recommendations and Resources. EPA, Updated January 2025 (Version 1.25).
- SEA Pack. EPA, Updated January 2023.
- SEA Spatial Information Sources Inventory. EPA, Updated April 2024.
- SEA Resource Manual for Local and Regional Planning Authorities. EPA, 2015.
- Good Practice Guidance on SEA Screening. EPA, 2021.
- Good Practice Guidance on Strategic Environmental Assessment (SEA) and Landscape. EPA, December 2023.
- Guidance on Strategic Environmental Assessment (SEA) Statements and Monitoring. EPA, March 2023.
- Guidance on Strategic Environmental Assessment - Environmental Impact Assessment Tiering, EPA, 2021.
- Local Authority Climate Action Plan Guidelines. Department of the Environment, Climate and Communications, March 2023.
- EPA Mapping. Environmental Mapping / Geographical Information System (GIS) tools are available at: <http://gis.epa.ie/SeeMaps>
- EPA Water and Air Quality Reports at: <https://www.epa.ie/pubs/legislation/air/quality/>
- EPA Ireland's State of the Environment Report 2024, <https://www.epa.ie/publications/monitoring--assessment/assessment/state-of-the-environment/irelands-state-of-the-environment-report-2024.php>
- EPA Ireland's Environment – An Integrated Assessment 2020 at: <https://www.epa.ie/our-services/monitoring--assessment/assessment/irelands-environment/state-of-environment-report-/#>
- SEA (EPA) Spatial Information Sources at: <http://www.epa.ie/pubs/advice/ea/>
- Developing and Assessing Alternatives in Strategic Environmental Assessment, EPA 2015 at: https://www.epa.ie/publications/research/biodiversity/EPA-157_web.pdf
- Good Practice Guidance on Cumulative Effects Assessment in SEA. EPA, 2020.
- Integrating Climate Change into Strategic Environmental Assessment in Ireland - A Guidance Note. EPA, 2019.
- Climate Action Plan 2025. Department of Environment, Climate and Communications, 2025.
- Circular Letter PL 9/2013: Article 8 (Decision Making) of EU Directives 2001/42/EC on Strategic Environmental Assessment (SEA) as amended. Department of Environment, Community and Local Government, 2013.
- Circular Letter PSSP 6/2011: Further Transposition of EU Directive 2001/42/EC on Strategic Environmental Assessment (SEA). Department of Environment, Community and Local Government, 2011.

- Circular Letter SEA 1/08 & NPWS 1/08: Appropriate Assessment of Land Use Plans. Department of Environment, Heritage and Local Government, 2008.
- Integrated Biodiversity Impact Assessment - Streamlining AA, SEA and EIA Processes: Practitioner's Manual. Strive Report Series No. 106. Department of Environment, Community and Local Government, 2013.
- Guidance on Integrating Climate Change and Biodiversity into Strategic Environmental Assessment. European Commission 2013.
- Managing Natura 2000 Sites - The provisions of Article 6 of the 'Habitats' Directive 92/43/EEC. European Commission, 2000, at: http://ec.europa.eu/environment/nature/natura2000/management/docs/art6/provision_of_art6_en.pdf
- Assessment of plans and projects significantly affecting Natura 2000 sites - Methodological guidance on the provisions of Article 6(3) and (4) of the Habitats Directive 92/43/EEC. European Commission, 2002, at: http://ec.europa.eu/environment/nature/natura2000/management/docs/art6/natura_2000_asses_en.pdf
- Appropriate Assessment of Plans and Projects in Ireland. National Parks and Wildlife Service, 2009, at: http://www.npws.ie/publications/archive/NPWS_2009_AA_Guidance.pdf

2.4 Appropriate Assessment (AA)

Articles 6(3) and 6(4) of Directive 92/43/EEC on the conservation of natural habitats and of wild fauna and flora (the 'Habitats Directive') require Appropriate Assessment (AA) to be carried out where a plan or project is likely to have a significant impact on a Natura 2000 site. Natura 2000 sites include:

- Special Areas of Conservation (SAC) and candidate Special Areas of Conservation (cSAC), designated for the conservation of Annex I habitats and Annex II species of the Habitats Directive; and
- Special Protection Areas (SPA), designated for the protection of Annex I birds of Directive 2009/147/EC on the conservation of wild birds (the 'Birds Directive') and other regularly occurring migratory birds and their habitats.

Stage 1 in the AA process is to establish whether AA is required for the particular plan or project. This stage is referred to as 'screening for the requirement for AA', and its purpose is to determine:

- Whether a plan or project is directly connected to or necessary for the management of the site; and
- Whether a plan or project, alone or in combination with other plans and projects, is likely to have significant effects on a Natura 2000 site in view of its conservation objectives.

As set out in Department Circular Letter SEA 1/08 & NPWS 1/08⁴ (15th February 2008), Screening for AA is of relevance to SEA screening in that *"where following screening, it is found that the draft plan or amendment may have an impact on the conservation status of a Natura 2000 site or that such an impact cannot be ruled out, adopting the precautionary approach:*

- *An AA of the plan must be carried out, and*
- *In any case where SEA would not otherwise be required, it must also be carried out."*

Hence, if the Plan requires AA, it shall also require SEA.

The *Fingal County Outdoor Recreation Plan 2025-2030* has been screened for the requirement for AA. The AA Screening Report, prepared by BSM (refer to standalone report under separate cover) has concluded that:

"Following review of the Fingal County Outdoor Recreation Plan 2025-2030 against the Conservation Objectives of the relevant European sites, it is concluded that there is no possibility that the implementation

⁴ NPWS SEA letter: <https://www.npws.ie/sites/default/files/general/circular-sea-01-08.pdf>

of this Plan could result in any likely significant effects on European sites on its own or in combination with other plans and programmes. This conclusion was reached without considering or taking into account mitigation measures or measures intended to avoid or reduce any impact on European sites.

In view of best scientific knowledge therefore, this report concludes that the Fingal County Outdoor Recreation Plan 2025-2030, individually or in combination with another plan or project, is not likely to have a significant effect on European sites under Article 6 of the Habitats Directive (92/43/EEC) in light of their conservation objectives. The Outdoor Recreation Plan does not require an Appropriate Assessment and the preparation of a Natura Impact Report.”

2.5 Consultation

Articles 9(5) and 9(6) of S.I. 435 of 2004, as amended by S.I. 200 of 2011, require that the competent authority (Fingal County Council) give notice to specified environmental authorities stating their intention to prepare a plan or programme; indicating whether the plan or programme would or would not be likely to have significant effects on the environment, and seeking submissions / observations from the environmental authorities in relation to same:

- (5) *“Prior to making a decision under sub-article (2) or (3), a competent authority shall give notice in accordance with sub-article (6) to the following environmental authorities—*
- (a) the Environmental Protection Agency,*
 - (b) where it appears to the competent authority that the plan or programme, or modification to a plan or programme, might have significant effects in relation to the architectural or archaeological heritage or to nature conservation, the Minister for the Environment, Heritage and Local Government,*
 - (c) where it appears to the competent authority that the plan or programme, or modification to a plan or programme, might have significant effects on fisheries or the marine environment, the Minister for Agriculture, Marine and Food, and the Minister for Communications, Energy and Natural Resources.*
- (6) *A notice under sub-article (5) shall—*
- (a) state that the competent authority proposes to prepare a plan or programme, or to modify a plan or programme,*
 - (b) state that the competent authority must decide whether the plan or programme, or modification to a plan or programme, would or would not be likely to have significant effects on the environment and that, in so doing, it must take account of relevant criteria set out in Schedule 1, and*
 - (c) indicate that a submission or observation in relation to whether the proposed plan or programme, or modification to a plan or programme, would or would not be likely to have significant effects on the environment may be made to the authority within a specified period which shall be not less than 4 weeks from the date of the notice.”*

In accordance with Article 9(5) of S.I. 435 of 2004, as amended by S.I. 200 of 2011, the SEA Screening Report, Appropriate Assessment Screening Report and a copy of the Draft *Fingal County Outdoor Recreation Plan 2025-2030* shall be issued to the following Environmental Authorities specified in Article 9(5) of S.I. No. 435 of 2004 (as amended):

- The Environmental Protection Agency (EPA);
- The Minister for Housing, Local Government and Heritage;
- The Minister for Agriculture, Food and the Marine; and
- The Minister for Environment, Climate and Communications.

Consultation with national stakeholders, Fingal stakeholders and the public, has been critical to informing the current position of outdoor recreation in Fingal and the five-year actions included in the Plan. Public consultation was carried out in early 2025 and included two public ‘drop in’ events held in Malahide and Blanchardstown libraries and also via an online survey that was live for three weeks.

3 Description of the Fingal County Outdoor Recreation Plan 2025-2030

In 2022, the Department of Rural and Community Development (DRCD) launched the national outdoor recreation strategy 'Embracing Ireland's Outdoors 2023-2027', that aims to strengthen the sustainable development of the outdoor recreation sector and drive economic and health benefits to communities, while protecting landscapes, habitats and built heritage. The national outdoor recreation strategy highlights the requirement for county outdoor recreation plans across Ireland.

As described in the Plan, several national and global trends have informed the development of the Fingal Outdoor Recreation Plan. This includes:

- *Increase in demand: A growth in interest and participation in outdoor recreation in Ireland and globally.*
- *Activities: Soft activities, such as walking and cycling, represent the most significant segment of outdoor recreation and consumer demand for soft activities is set to continue. There is a rise in new activities such as open water swimming and stand up paddleboarding.*
- *Ageing population: The population in Ireland is getting older and the number of older people taking part in outdoor recreation is expected to increase, along with a growth in multi-generational participation in outdoor recreation.*
- *Closer to home: People are seeking opportunities to participate in outdoor recreation ‘closer to home’.*
- *Sustainability: People are increasingly concerned about the environment and behaving more sustainably.*
- *Wellbeing: The global trend to improve our physical and mental wellbeing is driving a desire to integrate health and wellbeing into leisure and tourism choices.*

3.1 Strategic Objectives

The Fingal Outdoor Recreation Plan 2025-2030 has set out the following strategic objectives as defined within the 6 themes set out in the national outdoor recreation strategy 'Embracing Ireland's Outdoors 2023-2027':

3.1.1 Leadership & collaboration

To create a more co-ordinated, cohesive approach across Fingal to ensure co-ordination and collaboration and ensure best use of our resources

	Action
1.1	<i>Establish a County Outdoor Recreation Committee (CORC) in line with ‘Guidance for Establishment of County Outdoor Recreation Committees and County Outdoor Stakeholder Forums’ (Dept of Rural Community and Development) to ensure co-operation and collaborative working between the key stakeholders directly or indirectly involved in outdoor recreation at a County level.</i>
1.2	<i>Establish a Stakeholder Forum to ensure wider stakeholder representation and consultation on outdoor recreation in Fingal.</i>
1.3	<i>Establish a cross-directorate Council Outdoor Recreation Committee to bring together all staff involved in outdoor recreation projects to ensure collaborative working within the Council.</i>

1.4	<i>Secure the funding to appoint a County Outdoor Recreation Officer (ORO) to lead and coordinate the CORC and Stakeholder Forum and drive forward the implementation of the County Outdoor Recreation Plan (CORP).</i>
-----	---

3.1.2 Environment & heritage

To protect Fingal’s environment and heritage through better planning and development of outdoor recreation

	Action
2.1	<i>Ensure that environment and heritage are incorporated within the planning and development of all future outdoor recreation projects and programmes – including consideration of suitability, sustainability, education and enhancement in line with existing and future action plans.</i>
2.2	<i>Ensure that environment and heritage are standing items at all Cross Directorate meetings.</i>
2.3	<i>Ensure all future outdoor recreation projects align with the Council’s Climate Action Plan.</i>
2.4	<i>Carry out annual pathway condition assessment of looped pathway network on Howth Head and carry out maintenance as required.</i>
2.5	<i>Ensure that visitor management measures in Special Amenity Areas are implemented to reduce the impact of recreational use in the natural environment, whilst enhancing biodiversity and nature connection.</i>

3.1.3 Access & infrastructure

To protect and improve access to Fingal’s outdoors, for the benefit of all across the County

	Action
3.1	<i>Continue to support delivery of ongoing projects throughout the County, including Greenways and active travel routes, the Fingal Camino and the Dublin Coastal Trail.</i>
3.2	<i>Continue to support the Active Travel work programme as a method to increase the connectivity between communities and greenspace throughout the County.</i>
3.3	<i>Ensure that all new outdoor recreation projects incorporate active travel and public transport considerations when being planned including, where possible, new connections and linkages to areas of population.</i>
3.4	<i>Ensure future outdoor recreation projects, where possible, meet accessibility standards for all.</i>
3.5	<i>Support the delivery of recommendations from the County Sports Audits, where possible. The recommendations include the provision and improvement of beaches and open water swimming facilities – toilets, buoys, changing shelters, hooks, ramps, steps, signage, showers etc.</i>
3.6	<i>Undertake an accessibility and inclusivity audit of all existing recreation sites and facilities (toilets, car parks, buildings etc) across the County.</i>
3.7	<i>Explore potential opportunities for community trail provision across the County.</i>
3.8	<i>Carry out an audit of public water recreation access points and identify areas of need for greater provision within the County.</i>
3.9	<i>Pilot a scheme to promote the delivery of safe, leisure cycling routes on rural roads within the County and, if deemed successful, support the delivery of this concept across the County encourage greater connectivity to rural areas.</i>
3.10	<i>Continue monitoring water quality along the coast and inland waterways and disseminate results widely to the public.</i>

3.11	<i>Carry out an audit of existing outdoor recreation assets (including trails, signage – interpretation, trailhead - waymarking, fingerposts, benches, parking – bicycle and cars - toilets etc.) within the regional and neighbourhood parks.</i>
3.12	<i>Engage with minority sports to explore development opportunities where possible.</i>
3.13	<i>Continue to support the implementation of ‘Space for Play – A Play Policy for Fingal’.</i>
3.14	<i>Undertake a feasibility assessment to identify further Public Rights of Way.</i>

3.1.4 Awareness

To create awareness of Fingal’s outdoor recreation opportunities and how to enjoy them responsibly

	Action
4.1	<p><i>Develop a Communication Strategy to achieve greater collaboration and consistency in messaging when sharing and signposting information with locals and visitors, including:</i></p> <ul style="list-style-type: none"> ▪ <i>Aligning Fingal’s outdoor recreation with existing brand to maintain consistency</i> ▪ <i>Creating a single authoritative digital database, interactive maps and website that details all recreation sites, trails, pre-visit information (including in accessible formats), programmes (e.g. participation, hire), events, public transport and active travel connectivity</i> ▪ <i>Using ‘local heroes’ to help market and promote the opportunities available particularly to underrepresented and hard to reach groups</i> ▪ <i>Collaborate with Leave No Trace Ireland to ensure inclusion of Leave No Trace principles</i>
4.2	<i>Support the roll out of the national ‘Responsible Use of the Outdoors’ campaign at a local level.</i>

3.1.5 Opportunities

To increase and support the number of people active in the outdoors across Fingal, especially young people and under-represented groups

	Action
5.1	<p><i>Co-ordinate the delivery of a wide range of targeted programmes including (but not limited to) Watersports Camp for All, HEROutdoors Week, Woodlands for Health and ParkFit / Beach Yoga, Open Sea Swim events which focus on encouraging the following target groups to engage in outdoor activity:</i></p> <ul style="list-style-type: none"> ▪ <i>Women</i> ▪ <i>Children and young people</i> ▪ <i>Disability</i> ▪ <i>Under-represented groups</i>
5.2	<i>Identify and support opportunities to participate in a range of priority activities through coordinating and facilitating a variety of programmes. Priority activities to include; walking, open water swimming, cycling, water sports.</i>
5.3	<i>Collaborate with Leave No Trace Ireland to ensure all activities and programmes are delivered in line with Leave No Trace principles.</i>

3.1.6 Expertise

To improve the knowledge, skills, and expertise of Fingal’s stakeholders and partners

	Action

6.1	<i>Continue to support engagement with open water swimming groups to provide training and safety advice.</i>
6.2	<i>Continue to engage with the Visitor Safety Group (VSG) to build capacity in safety and visitor management issues.</i>
6.3	<i>Ensure that visitor monitoring is implemented as part of all future outdoor recreation development to understand usage, help target promotion and support funding of development and maintenance costs.</i>
6.4	<i>Deliver training both internally and externally on the opportunities available under ORIS funding.</i>

4 Description of the receiving environment

The Outdoor Recreation Plan covers the entire Fingal Administrative Area (an area of over 450 sq.km). Fingal County has a varied coastline of beaches, dunes and cliffs. Most outdoor recreation activities are carried out on the east coast of Fingal and includes beaches, public parks, amenity areas, water access points, walking trails, active travel routes, recreation hubs etc.

Fingal County Council manages approximately 2,000ha of public open space and many public parks in the county have significant stands of woodland framing important and often iconic landscapes. There are two nature reserves in Fingal, namely Rogerstown Nature Reserve and Baldoyle Estuary Nature Reserve. The Ramsar Sites of Rogerstown Estuary (site no. 412), Broadmeadow Estuary (site no. 833), Baldoyle Bay (site no. 413) are also within the Fingal Administrative Area. Fingal County Council have also identified lands around Malahide/Broadmeadow, Rogerstown and Baldoyle estuaries and around Sluice River Marsh and the Bog of the Ring as ecological buffer zones.

Fingal has high-quality public open space and includes the historic demesnes of Malahide, Newbridge and Ardgillan and parks such as Millennium Park and St. Catherine’s Park. The high quality of Fingal’s parks is recognised in the awarding of Green Flag status to Ardgillan Demesne, Malahide Demesne, Millennium Park, Newbridge House and Farm, Santry Demesne and St. Catherine’s Park for exceeding environmental standards in green space management and excellence in visitor attractions. New park facilities include the first phase of the Rogerstown Park, Lusk as well as the completion of major restoration works at Shackleton Gardens, Clonsilla.

The Geological Survey of Ireland (GSI) has identified 21 County Geological Sites in Fingal which are important geological heritage sites. Special Amenity Area Orders are also in place for Howth and the Liffey Valley.

Fingal is traversed by a number of rivers and their tributaries including the Liffey, Tolka, Ward, Broadmeadow River, Delvin, Mayne and Sluice rivers, which are important fisheries and wildlife resources. They are also important for the ongoing provision of water services and for the management of flood risk. Other important river corridors include the Matt, Corduff, Ballyboghil and Santry rivers. Fingal has no natural lakes.

Fingal has a rich archaeological and architectural heritage ranging from historic buildings, churches, castles, Martello Towers, windmills, mounds, sub-surfaces sites, graveyards and burials, mill races and shipwrecks. Currently, there are known 1311 archaeological sites, 790 protected structures, 127 historic demesnes, 21 geological heritage sites and 33 architectural conservation areas (ACAs) within the administrative area of Fingal County Council (*Fingal Development Plan 2023-2029*).

Fingal has a diverse building stock ranging from farmsteads, small cottages and large country houses to the architecture of a capital city, including an international airport, large shopping centres and modern office blocks. Most people identify the large estates of Luttrellstown, Newbridge, Ardgillan and Malahide as being of significant architectural merit, but more modest and functional structures also form part of the architectural heritage of the county. This includes lighthouses; the 19th century railway stations; the Martello towers; holy wells; milestones; water-pumps and individual thatched buildings.

Fingal has designated 33 no. Architectural Conservation Areas (ACA), indicating the locations where many clusters of protected structures were to be found. Fingal contains a rich heritage of fishing, transport network, industrial buildings and features and structures associated with extractive industries such as quarries and lime kilns. Some of

the industrial heritage sites in Fingal include Skerries Windmill complex, remains of a lime kiln in Malahide Castle Demesne and the copper mines north of Loughshinny.

The status of the river waterbodies in the Plan area ranges from ‘good’ to ‘poor’ during the 2016-2021 monitoring period (see [Figure 4.1](#)).

The Water Framework Directive (WFD) status of the transitional waterbodies in Fingal ranges from ‘poor’ to ‘moderate’ during the 2016-2021 monitoring period. The transitional waterbodies in Fingal are (refer to [Figure 4.1](#)):

- Rogerstown Estuary (Poor and ‘at risk of not achieving good status’);
- Broadmeadow Estuary (Moderate and ‘at risk of not achieving good status’);
- Baldoyle Bay / Mayne Estuary (Moderate and under review);
- North Bull Island (Moderate and under review);

The WFD status of the coastal waterbodies in Fingal ranges from ‘good’ to ‘moderate’ during the 2016-2021 monitoring period. The coastal waterbodies in Fingal are (refer to [Figure 4.1](#)):

- North-western Irish Sea (Good);
- Rockabill (Unassigned and under review);
- Malahide Bay (Moderate and ‘at risk of not achieving good status’);
- Irish Sea (Good);
- Dublin Bay (Good).

There are ten designated bathing waters along the Fingal coastline. The most recent report on bathing water quality ‘Bathing Water Quality in Ireland - A Report for the Year 2022’ sets out the status of Irish Seawater and Freshwater Bathing areas. The 2022 Annual Water Quality monitoring period results are:

- Balbriggan, Front Strand Beach (Poor);
- Skerries, South Beach (Sufficient);
- Loughshinny Beach (Sufficient);
- Rush, North Beach (Excellent);
- Rush, South Beach (Excellent);
- Portrane, the Brook Beach (Excellent);
- Donabate, Balcarrick Beach (Excellent);
- Portmarnock, Velvet Strand Beach (Excellent);
- Sutton, Burrow Beach (Good);
- Claremont Beach, Howth (Sufficient).

4.1.1 European sites

There are 12no. European (Natura 2000) sites within the administrative boundary of Fingal County Council or in the immediate vicinity (as shown in [Figure 4.2](#)):

- **Special Areas of Conservation (SAC):**
 - Rogerstown Estuary SAC (site code 000208);
 - Malahide Estuary SAC (site code 000205);
 - Lambay Island SAC (site code 000204);
 - Baldoyle Bay SAC (site code 000199);
 - Ireland’s Eye SAC (site code 002193) ;
 - Howth Head SAC (site code 000202).
- **Special Protection Areas (SPA):**
 - Rogerstown Estuary SPA (site code 004015);
 - Malahide Estuary SPA (site code 004025);

- Lambay Island SPA (site code 004069);
- Baldoyle Bay SPA (site code 004016);
- Ireland’s Eye SPA (site code 004117);
- Howth Head Coast SPA (site code 004113);
- North-west Irish Sea SPA (site code 004236).

There are a further 20no. European sites outside of the administrative area of Fingal County Council, potentially within the zone of influence of the Plan:

- Rockabill to Dalkey Island SAC (site code 003000);
- North Dublin Bay SAC (site code 000206);
- North Bull Island SPA (site code 004006);
- Rye Water Valley/Carton SAC (site code 001398);
- South Dublin Bay SAC (site code 000210);
- South Dublin Bay and River Tolka Estuary SPA (site code 004024);
- Skerries Islands SPA (site code 004122);
- Rockabill SPA (site code 004014);
- River Nanny Estuary and Shore SPA (site code 004158);
- Boyne Coast and Estuary SAC (site code 001957);
- Boyne Estuary SPA (site code 004080);
- River Boyne and River Blackwater SAC (site code 002299);
- River Boyne and River Blackwater SPA (site code 004232);
- Dalkey Islands SPA (site code 004172);
- Glensmole Valley SAC (site code 001209);
- Wicklow Mountains SAC (site code 002122);
- Wicklow Mountains SPA (site code 004040);
- Knocksink Wood SAC (site code 000725)
- Ballyman Glen SAC (site code 000713);
- Bray Head SAC (site code 000714).

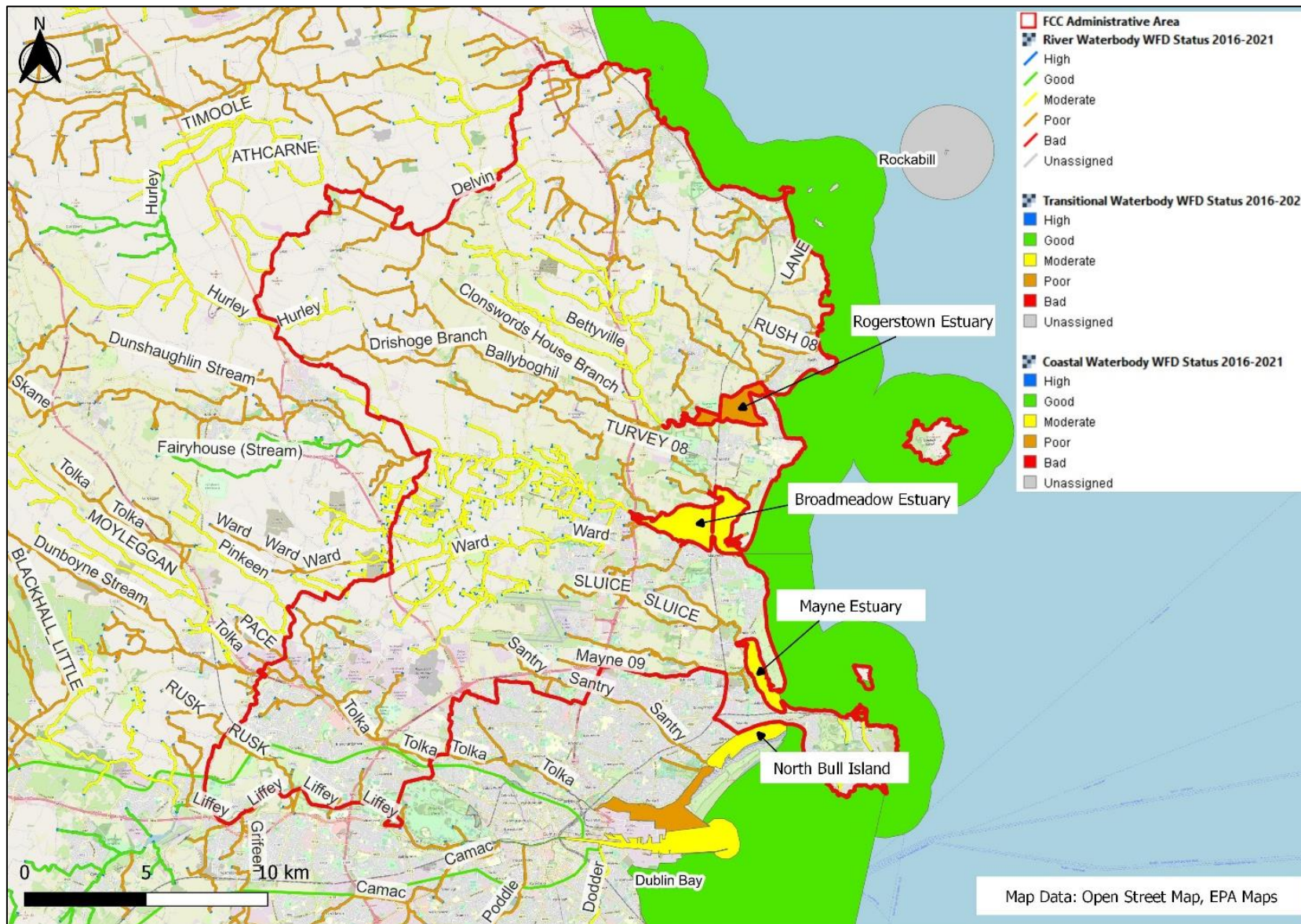
4.1.2 Other designated areas (other than European sites)

Designated sites (i.e. proposed Natural Heritage Areas (pNHA) and designated Natural Heritage Areas (NHA)) within the potential Zone of Influence have been included in this assessment in order to address their potential to act as supporting sites for European sites (as shown in. There are 15 no. NHAs and 29 no. pNHAs within the Fingal administrative area.

Fingal County Outdoor Recreation Plan 2025 – 2030

SEA Screening Report

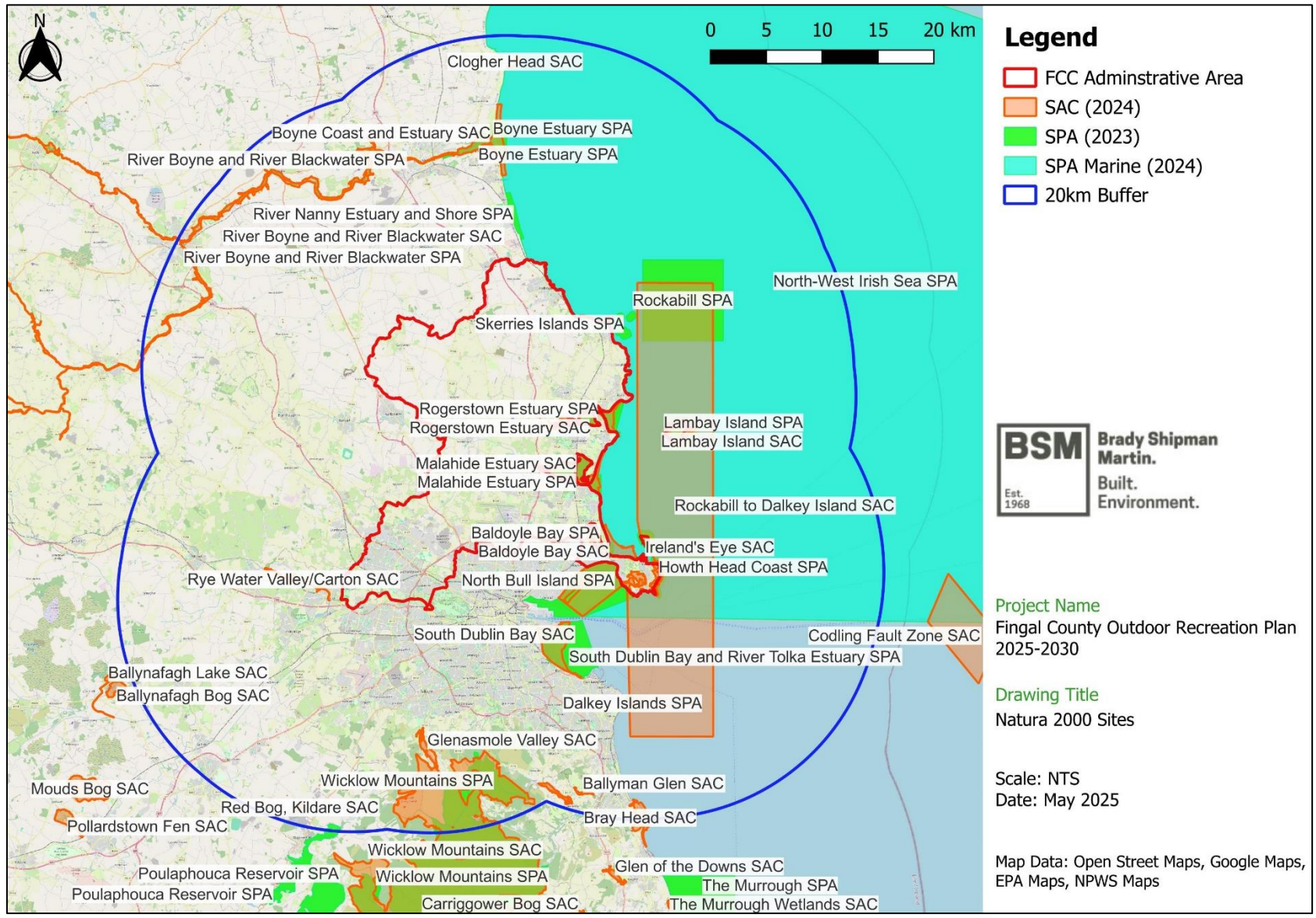
Figure 4.1 WFD waterbody status within the Fingal County Outdoor Recreation Plan Area



Fingal County Outdoor Recreation Plan 2025 – 2030

SEA Screening Report

Figure 4.2 European sites within zone of influence of the Outdoor Recreation Plan. A 20 km radius is shown for scale.



5 Planning Context

Implementation of the Fingal County Outdoor Recreation Plan will be informed and contextualised by a range of policies and plans at international, national, and local level.

5.1 International

- ‘United Nations’ Sustainability Development Goals (SDGs) as set out in the 2030 Agenda for Sustainable Development Transforming our World
- EU Water Framework Directive (WFD)
- Birds (2009/147/EC) and Habitats Directive (92/43/EEC)
- EU Floods Directive
- EU Green Infrastructure Strategy
- UN (1992) The Convention on Biological Diversity (CBD)
- Council of Europe (1996) The Pan-European Biological and Landscape Diversity Strategy
- Council of Europe (1996) The European Landscape Convention 2000
- EU Marine Strategy Framework Directive (MSFD)
- EU The Marine Spatial Planning Directive (MSP)

5.2 National

- Project Ireland 2040, The National Planning Framework (NPF) (including NPF First Revision, April 2025)
- Embracing Ireland’s Outdoors National Outdoor Recreation Strategy 2023-2027
- National Landscape Strategy 2015-2025
- National Biodiversity Action Plan 2023-2030
- Tourism Policy Framework 2025–2030
- Child and Youth Participation Strategy 2019–2023
- National Physical Activity Plan for Ireland (2016, reviewed 2020)
- Sport Ireland Policy on Sport and Physical Activity in the Outdoors (2020)
- Sport Ireland Participation in Sport by People with Disabilities (2017)
- Coillte Strategic Vision (2022)
- Climate Action Plan 2025

5.3 County

The Fingal Development Plan 2023-2029 promotes the use of outdoor recreation, health and well-being and general enjoyment of Fingal’s many and varied open spaces. Other county level plans include:

- Fingal Development Plan 2023-2029
- Dublin Regional Tourism Development Strategy 2023-2027
- Fingal Tourism Strategy 2024-2029
- Future Fingal: An Economic Development Strategy (2024)
- Local Economic and Community Plan 2023 - 2028
- Local Sport and Physical Activity Plan 2024 - 2029
- An Active Travel Strategy for Fingal (2023)
- Keeping it Green - An Open Space Strategy for Fingal (Draft)
- Fingal Climate Action Plan 2024-2029
- Fingal Biodiversity Action Plan 2023 - 2030
- Fingal Heritage Plan 2024 - 2030
- Leader Local Development Strategy for Dublin Rural 2023 – 2027
- Space for Play – A Play Policy for Fingal

6 Screening for Requirement for SEA

The screening for the requirement for SEA has been conducted in accordance with the criteria set out in Schedule 1 of S.I. No. 435 of 2004, as amended by S.I. No. 200 of 2011.

The criteria are set out under two principal headings:

- Characteristics of a Plan / Programme; and
- Characteristics of the effects and of the area likely to be affected.

The corresponding sub-criteria are addressed in [Tables 6.1](#) and [6.2](#), below, respectively.

A screening for SEA of the strategies and actions in the Fingal County Outdoor Recreation Plan 2025-2030 is also provided in [Table A1](#) in [Appendix 1](#).

Table 6.1: Characteristics of the Plan / Programme, having regard, in particular, to:

6.1.1 The degree to which the plan sets a framework for projects and other activities, either with regard to the location, nature, size and operating conditions, or by allocating resources

In 2022, the Department of Rural and Community Development (DRCD) launched the national outdoor recreation strategy *'Embracing Ireland's Outdoors 2023-2027'*, that aims to strengthen the sustainable development of the outdoor recreation sector and drive economic and health benefits to communities, while protecting landscapes, habitats and built heritage. The national outdoor recreation strategy highlights the requirement for county outdoor recreation plans across Ireland.

As described in the Fingal Outdoor Recreation Plan, several national and global trends have informed the development of the Fingal Outdoor Recreation Plan. This includes:

- *Increase in demand: A growth in interest and participation in outdoor recreation in Ireland and globally.*
- *Activities: Soft activities, such as walking and cycling, represent the most significant segment of outdoor recreation and consumer demand for soft activities is set to continue. There is a rise in new activities such as open water swimming and stand up paddleboarding.*
- *Ageing population: The population in Ireland is getting older and the number of older people taking part in outdoor recreation is expected to increase, along with a growth in multi-generational participation in outdoor recreation.*
- *Closer to home: People are seeking opportunities to participate in outdoor recreation 'closer to home'.*
- *Sustainability: People are increasingly concerned about the environment and behaving more sustainably.*
- *Wellbeing: The global trend to improve our physical and mental wellbeing is driving a desire to integrate health and wellbeing into leisure and tourism choices.*

Therefore, the Fingal Outdoor Recreation Plan 2025-2030 sets out the strategic priority statement as follows:

'The priority for outdoor recreation in Fingal over the next five years is to enhance and expand the outdoor recreation offer and explore sustainable development opportunities, fostering a vibrant community which encourages all to enjoy the natural environment and heritage, and experience a high quality of life'

The Fingal Outdoor Recreation Plan 2025-2030 has set out the following strategic objectives as defined within the 6 themes set out in the national outdoor recreation strategy *'Embracing Ireland's Outdoors 2023-2027'*:

- *Leadership & collaboration: To create a more co-ordinated, cohesive approach across Fingal to ensure co-ordination and collaboration and ensure best use of our resources*
- *Environment & heritage: To protect Fingal’s environment and heritage through better planning and development of outdoor recreation*
- *Access & infrastructure: To protect and improve access to Fingal’s outdoors, for the benefit of all across the County*
- *Awareness: To create awareness of Fingal’s outdoor recreation opportunities and how to enjoy them responsibly*
- *Opportunities: To increase and support the number of people active in the outdoors across Fingal, especially young people and under-represented groups*
- *Expertise: To improve the knowledge, skills, and expertise of Fingal’s stakeholders and partners*

The Plan outlines a series of actions, timescale and stakeholders involved for each theme, and these priorities were identified in consultation with national stakeholders, Fingal stakeholders and the public. The consultation process has been critical to informing the current position of outdoor recreation in Fingal and the five-year actions included in the Plan.

Adequate resourcing, through appointment of a new County Outdoor Recreation Officer to implement the County Outdoor Recreation Plan is required.

6.1.2 The degree to which the plan influences other plans, including those in a hierarchy

In the context of global, European, national, regional and local plans; the Plan is at a low level in the hierarchy of plans. The key related plans and policy documents are highlighted in [Section 5](#) above. The adoption and implementation of the final version of the Plan will support the implementation / objectives of various plans and policies at higher levels in the planning hierarchy, including the Fingal Development Plan 2023-2029.

6.1.3 The relevance of the plan for the integration of environmental considerations, in particular with a view to promoting sustainable development

The Plan aims to strengthen the sustainable development of the outdoor recreation sector and drive economic and health benefits to communities, while protecting landscapes, habitats and built heritage. The Plan aims to ensure that environment and heritage is woven into the fabric of all outdoor recreation decision-making to secure the quality of our outdoor recreation experiences for future generations. It ensures greater collaboration between Council departments involved in outdoor recreation, as well as Biodiversity and Heritage teams to inform approaches and messaging around sustainable outdoor recreation in line with existing and future action plans.

Furthermore, the Fingal Outdoor Recreation Plan 2025-2030 sets out the strategic priority statement as follows:

‘The priority for outdoor recreation in Fingal over the next five years is to enhance and expand the outdoor recreation offer and explore sustainable development opportunities, fostering a vibrant community which encourages all to enjoy the natural environment and heritage, and experience a high quality of life’

Many of the actions relate to information gathering / research that can help to inform evidence-based decision making and geographically targeted conservation efforts in Fingal and elsewhere – and not solely under the scope of this Plan but also on the part of Fingal County Council and decision makers more generally.

6.1.4 Environmental problems relevant to the plan or programme

The *Fingal County Outdoor Recreation Plan 2025-2030* is of direct relevance to the integration of environmental considerations – specifically in relation to conserve, manage, protect, and enhance the natural and cultural heritage in the Fingal administrative area.

Environmental problems of greatest relevance to the Plan are as follows:

- Impact on the protected sites (Natura 2000 sites) and species;
- Impact on water quality;
- Impact on air quality and noise;
- Sustainable urban drainage solutions;
- Impacts of climate change in form of flooding;
- Improve permeability and connectivity to the outdoor recreation areas;
- Visitor pressure and management in protected areas.

The above issues, including any strategic planning issues have been addressed within the Plan to provide for structured and balanced outdoor recreation opportunities in a sustainable manner.

6.1.5 The relevance of the plan for the implementation of European Union legislation on the environment (e.g. plans linked to waste management or water protection)

The Plan is of relevance to the implementation of International / European Union legislation, particularly the following:

- ‘United Nations’ Sustainability Development Goals (SDGs) as set out in the 2030 Agenda for Sustainable Development Transforming our World.
- EU Water Framework Directive (WFD)
- Birds (2009/147/EC) and Habitats Directive (92/43/EEC)
- EU Floods Directive
- EU Green Infrastructure Strategy
- UN (1992) The Convention on Biological Diversity (CBD)
- Council of Europe (1996) The Pan-European Biological and Landscape Diversity Strategy
- Council of Europe (1996) The European Landscape Convention 2000
- EU Marine Strategy Framework Directive (MSFD)
- EU The Marine Spatial Planning Directive (MSP)

Table 6.2: Characteristics of the effects and of the area likely to be affected, having regard, in particular, to:

<p>6.2.1 The probability, duration, frequency and reversibility of the effects</p>
<p>The actions of the Plan have been reviewed with regard to the potential for unintended negative environment effects and it is considered that there is no real likelihood of significant negative environmental effects occurring as result of the implementation of the Plan.</p> <p>The significance, duration, frequency and reversibility of effects will vary between the different actions proposed and the aspects of the receiving environment affected.</p>
<p>6.2.2 The cumulative nature of the effects</p>
<p>The implementation of the Plan will result in the implementation of actions set out under the six strategic objectives (refer to Appendix 1) as set out in the Plan, all of which are likely to result in positive or neutral environmental effects. On the basis of information presented in previous sections it can be excluded that the implementation of the Plan, individually or in-combination with other plans or projects, will have a significant effect on the environment.</p>
<p>6.2.3 The trans-boundary nature of the effects</p>
<p>The Fingal County Council administrative area is not located on or near the border with Northern Ireland and, as such, no transboundary effects (other than positive climate effects that are, by nature, transboundary) are predicted to occur.</p>
<p>6.2.4 The risks to human health or the environment (e.g. due to accidents)</p>
<p>There are no actions set out in the Plan whose implementation would significantly increase the risk to human health or the environment (e.g. due to accidents) relative to the baseline. On the contrary, certain actions of the Plan – particularly those around visitor management, climate action, access and infrastructure and raising awareness - may be expected to safeguard natural and cultural assets and encourage responsible participation. This will further enhance climate resilience of the receiving environment in the Local Authority area, thereby reducing vulnerability to accidents and extreme events such as flooding, drought, storms and accidental pollution events.</p>
<p>6.2.5 The magnitude and spatial extent of the effects (geographical area and size of the population likely to be affected)</p>
<p>The adoption and implementation of the Plan is expected to contribute to the enhancement of outdoor recreation strategy across the Fingal administrative area. The extent of the geographical area is described in Section 4.</p> <p>The Central Statistics Office (CSO) data illustrates that the population of the Irish State increased between 2011 and 2016 by 3.8%, and further increased by 8.1% between 2016 and 2022, bringing the total population of the Irish State to c. 5.1 million in April 2022, which is the highest population recorded in a census since 1841. The summary results for 2022 census states that Fingal is one of the highest growing counties with a population increase of 11.6% between Census 2016 and Census 2022. In the period between 2016 and 2022, the population in the administrative area of Fingal County Council (FCC) increased by 11.6% as compared to the previous increase of 8% between 2011 and 2016.</p>
<p>6.2.6 The value and vulnerability of the area likely to be affected due to:</p>

<p>(a) special natural characteristics or cultural heritage</p>
<p>The natural environment and cultural heritage assets within Fingal County Council administrative area are described in detail in Section 4.</p>
<p>(b) exceeded environmental quality standards or limit values</p>
<p>The implementation of the Plan is likely to result in positive effects for the conservation of heritage assets. No likely significant negative effects are predicted to occur in relation to any other aspects of the environmental standards or limit values.</p>
<p>(c) intensive land-use</p>
<p>The implementation of the Plan is likely to result in positive impacts for the receiving environment in terms of the responsible participation, conservation, accessibility and management of visitor pressure in the administrative area. The Plan is not likely to give rise to any significant negative impacts in this regard but rather will serve to address these existing pressures negatively affecting habitats, landscapes and built heritage in the area.</p>
<p>6.2.7 The effects on areas or landscapes which have a recognised national, European Union or international protection status</p>
<p>It is considered that the adoption and implementation of the Plan is likely to result in neutral or positive effects on such areas or landscapes.</p> <p>An AA Screening Report is being prepared in respect of the Plan and it has concluded that there will be no impact on the integrity of any European sites as a result of implementing the Plan.</p>

7 Recommendation on Requirement for SEA

The Fingal County Outdoor Recreation Plan 2025-2030 is a non-statutory land use plan. The Plan aims to strengthen the sustainable development of the outdoor recreation sector and drive economic and health benefits to communities, while protecting landscapes, habitats and built heritage. The Outdoor Recreation Plan has set out strategic objectives and actions as defined within the 6 themes set out in the national outdoor recreation strategy '*Embracing Ireland's Outdoors 2023-2027*'.

As a non-statutory plan, the Plan has been screened for the requirement for SEA under the requirements of S.I. No. 435 of 2004, as amended by S.I. No. 200 of 2011. The Plan has been considered in respect of the SEA screening criteria set out in Schedule 1 of S.I. No. 435 of 2004, as amended by S.I. No. 200 of 2011, and the results of this exercise are set out in [Section 6](#) of this report. It is considered, on the basis of this exercise, that the implementation of the Plan has no real likelihood of having likely significant negative effects on the environment.

The Plan is not likely to give rise to any significant negative impacts in this regard but rather will serve to address the existing pressures negatively affecting habitats, landscapes and built heritage in the area.

It is, therefore, recommended that the competent authority reach a determination that **the Fingal County Outdoor Recreation Plan 2025-2030 is not likely to have significant negative effects on the environment and, therefore, that SEA is not required.**

In accordance with Article 9(7) of S.I. 435 of 2004, as amended by S.I. 200 of 2011, Fingal County Council will notify the SEA environmental authorities of its Determination that SEA is not required and place a copy of its Determination on public display together with this SEA Screening Report and associated documentation relating to the Fingal County Outdoor Recreation Plan 2025-2030.

8 References

Clarke, A. Parkes, M. & Gatley, S. (2007). *The Geological Heritage of Fingal – An Audit of County Geological Sites in Fingal*. [Report prepared on behalf of the Heritage Council, GSI and FCC.]

Council Directive Habitats Directive 92/43/EEC of 21 May 1992 on the conservation of natural habitats and of wild fauna and flora.

Environment Director General of the European Commission (2003). *Implementation of Directive 2001/42 on the Assessment of the Effects of Certain Plans and Programmes on the Environment.*

EPA (2025a). *EPA Maps.*

EPA (2025b). *SEA of Local Authority Land-Use Plans – EPA Recommendations and Resources.*

EPA (2024a). *Spatial Information Resources Inventory.*

EPA (2023). *SEA Pack.*

EPA (2024b). *Ireland's State of the Environment Report 2024.*

EPA (2020). *Ireland's Environment – An Integrated Assessment 2020.*

EPA (2015). *Strategic Environmental Assessment Resource Manual for Planning Authorities – Integration of SEA Legislation with Procedures for Land Use Plans.*

EPA (2024). *SEA Process Checklist.*

EPA (2003). *Development of Strategic Environmental Assessment (SEA) Methodologies for Plans and Programmes in Ireland – Synthesis Report.*

European Communities (Environmental Assessment of Certain Plans and Programmes) Regulations 2004 (S.I. No. 435/2004).

European Communities (Environmental Assessment of Certain Plans and Programmes) (Amendment) Regulations 2011 (S.I. No. 200/2011).

European Parliament and Council Directive 2001/42/EC of 27 June 2001 on the assessment of the effects of certain plans and programmes on the environment.

Government of Ireland (2025). *Project Ireland 2040 – National Planning Framework (First Draft Revision).*

Government of Ireland (2004). *Implementation of SEA Directive (2001/42/EC): Assessment of the Effects of Certain Plans and Programmes on the Environment – Guidelines for Regional Authorities and Planning Authorities.*

GSI (2025). *Geological Survey of Ireland Map Viewer.*

OPW (2009). *The Planning System and Flood Risk Management – Guidelines for Planning Authorities.*

Planning and Development Act 2000, as amended.

Planning and Development Regulations 2001, as amended.

Planning and Development (Strategic Environmental Assessment) (Amendment) Regulations 2004 (S.I. 201/2011).

Planning and Development (Strategic Environmental Assessment) Regulations 2004 (S.I. 436/2004).

University College Dublin, AIRO, EPA, OSi, OPR & Geohive (2022). *ESM Webtool.*

Appendix 1: Screening of Strategy & List of Actions

Table A1 Screening of Strategy of the Fingal Outdoor Recreation Plan 2025-2030

Strategic Objective	Action	Potential for Environmental impact	Mitigation required
Leadership & collaboration	<i>Establish a County Outdoor Recreation Committee (CORC) in line with ‘Guidance for Establishment of County Outdoor Recreation Committees and County Outdoor Stakeholder Forums’ (Dept of Rural Community and Development) to ensure co-operation and collaborative working between the key stakeholders directly or indirectly involved in outdoor recreation at a County level.</i>	No likely significant negative environmental effects or positive effects.	No
	<i>Establish a Stakeholder Forum to ensure wider stakeholder representation and consultation on outdoor recreation in Fingal.</i>	No likely significant negative environmental effects or positive effects.	No
	<i>Establish a cross-directorate Council Outdoor Recreation Committee to bring together all staff involved in outdoor recreation projects to ensure collaborative working within the Council.</i>	No likely significant negative environmental effects or positive effects.	No
	<i>Secure the funding to appoint a County Outdoor Recreation Officer (ORO) to lead and coordinate the CORC and Stakeholder Forum and drive forward the implementation of the County Outdoor Recreation Plan (CORP).</i>	No likely significant negative environmental effects or positive effects.	No
Environment & heritage	<i>Ensure that environment and heritage are incorporated within the planning and development of all future outdoor recreation projects and programmes – including consideration of suitability, sustainability, education and enhancement in line with existing and future action plans.</i>	No likely significant negative environmental effects or positive effects.	No
	<i>Ensure that environment and heritage are standing items at all Cross Directorate meetings.</i>	No likely significant negative environmental effects or positive effects.	No
	<i>Ensure all future outdoor recreation projects align with the Council’s Climate Action Plan.</i>	No likely significant negative environmental effects or positive effects.	No
	<i>Carry out annual pathway condition assessment of looped pathway network on Howth Head and carry out maintenance as required.</i>	No likely significant negative environmental effects or positive effects.	No

Fingal County Outdoor Recreation Plan 2025 – 2030

SEA Screening Report

Strategic Objective	Action	Potential for Environmental impact	Mitigation required
	<i>Ensure that visitor management measures in Special Amenity Areas are implemented to reduce the impact of recreational use in the natural environment, whilst enhancing biodiversity and nature connection.</i>	No likely significant negative environmental effects or positive effects.	No
Access & infrastructure	<i>Continue to support delivery of ongoing projects throughout the County, including Greenways and active travel routes, the Fingal Camino and the Dublin Coastal Trail.</i>	No likely significant negative environmental effects or positive effects.	No
	<i>Continue to support the Active Travel work programme as a method to increase the connectivity between communities and greenspace throughout the County.</i>	No likely significant negative environmental effects or positive effects.	No
	<i>Ensure that all new outdoor recreation projects incorporate active travel and public transport considerations when being planned including, where possible, new connections and linkages to areas of population.</i>	No likely significant negative environmental effects or positive effects.	No
	<i>Ensure future outdoor recreation projects, where possible, meet accessibility standards for all.</i>	No likely significant negative environmental effects or positive effects.	No
	<i>Support the delivery of recommendations from the County Sports Audits, where possible. The recommendations include the provision and improvement of beaches and open water swimming facilities – toilets, buoys, changing shelters, hooks, ramps, steps, signage, showers etc..</i>	No likely significant negative environmental effects or positive effects.	No
	<i>Undertake an accessibility and inclusivity audit of all existing recreation sites and facilities (toilets, car parks, buildings etc) across the County.</i>	No likely significant negative environmental effects or positive effects.	No
	<i>Explore potential opportunities for community trail provision across the County.</i>	No likely significant negative environmental effects or positive effects.	No
	<i>Carry out an audit of public water recreation access points and identify areas of need for greater provision within the County.</i>	No likely significant negative environmental effects or positive effects.	No
	<i>Pilot a scheme to promote the delivery of safe, leisure cycling routes on rural roads within the County and, if deemed successful, support the delivery of this concept across the County encourage greater connectivity to rural areas.</i>	No likely significant negative environmental effects or positive effects.	No
	<i>Continue monitoring water quality along the coast and inland waterways and disseminate results widely to the public.</i>	No likely significant negative environmental effects or positive effects.	No

Fingal County Outdoor Recreation Plan 2025 – 2030

SEA Screening Report

Strategic Objective	Action	Potential for Environmental impact	Mitigation required
	<i>Carry out an audit of existing outdoor recreation assets (including trails, signage – interpretation, trailhead - waymarking, fingerposts, benches, parking – bicycle and cars - toilets etc.) within the regional and neighbourhood parks.</i>	No likely significant negative environmental effects or positive effects.	No
	<i>Engage with minority sports to explore development opportunities where possible.</i>	No likely significant negative environmental effects or positive effects.	No
	<i>Continue to support the implementation of ‘Space for Play – A Play Policy for Fingal’.</i>	No likely significant negative environmental effects or positive effects.	No
	<i>Undertake a feasibility assessment to identify further Public Rights of Way..</i>	No likely significant negative environmental effects or positive effects.	No
Awareness	<p><i>Develop a Communication Strategy to achieve greater collaboration and consistency in messaging when sharing and signposting information with locals and visitors, including:</i></p> <ul style="list-style-type: none"> ▪ <i>Aligning Fingal’s outdoor recreation with existing brand to maintain consistency</i> ▪ <i>Creating a single authoritative digital database, interactive maps and website that details all recreation sites, trails, pre-visit information (including in accessible formats), programmes (e.g. participation, hire), events, public transport and active travel connectivity</i> ▪ <i>Using ‘local heroes’ to help market and promote the opportunities available particularly to underrepresented and hard to reach groups</i> <p><i>Collaborate with Leave No Trace Ireland to ensure inclusion of Leave No Trace principles</i></p>	No likely significant negative environmental effects or positive effects.	No
	<i>Support the roll out of the national ‘Responsible Use of the Outdoors’ campaign at a local level.</i>	No likely significant negative environmental effects or positive effects.	No
Opportunities	<i>Co-ordinate the delivery of a wide range of targeted programmes including (but not limited to) Watersports Camp for All, HEROutdoors Week, Woodlands for Health and ParkFit / Beach Yoga, Open Sea Swim events which focus on encouraging the following target groups to engage in outdoor activity:</i>	No likely significant negative environmental effects or positive effects.	No

Fingal County Outdoor Recreation Plan 2025 – 2030

SEA Screening Report

Strategic Objective	Action	Potential for Environmental impact	Mitigation required
	<ul style="list-style-type: none"> ▪ Women ▪ Children and young people ▪ Disability <p><i>Under-represented groups</i></p>		
	<p><i>Identify and support opportunities to participate in a range of priority activities through coordinating and facilitating a variety of programmes. Priority activities to include; walking, open water swimming, cycling, water sports.</i></p>	<p>No likely significant negative environmental effects or positive effects.</p>	<p>No</p>
	<p><i>Collaborate with Leave No Trace Ireland to ensure all activities and programmes are delivered in line with Leave No Trace principles.</i></p>	<p>No likely significant negative environmental effects or positive effects.</p>	<p>No</p>
<p>Expertise</p>	<p><i>Continue to support engagement with open water swimming groups to provide training and safety advice.</i></p>	<p>No likely significant negative environmental effects or positive effects.</p>	<p>No</p>
	<p><i>Continue to engage with the Visitor Safety Group (VSG) to build capacity in safety and visitor management issues.</i></p>	<p>No likely significant negative environmental effects or positive effects.</p>	<p>No</p>
	<p><i>Ensure that visitor monitoring is implemented as part of all future outdoor recreation development to understand usage, help target promotion and support funding of development and maintenance costs.</i></p>	<p>No likely significant negative environmental effects or positive effects.</p>	<p>No</p>
	<p><i>Deliver training both internally and externally on the opportunities available under ORIS funding.</i></p>	<p>No likely significant negative environmental effects or positive effects.</p>	<p>No</p>

Brady Shipman Martin

DUBLIN

Mountpleasant Business Centre
Ranelagh
Dublin 6
D06 X7P8
+353 1 208 1900

CORK

Penrose Wharf Business Centre
Penrose Wharf
Cork
+353 21 242 5620

mail@bradyshipmanmartin.com
www.bradyshipmanmartin.com

