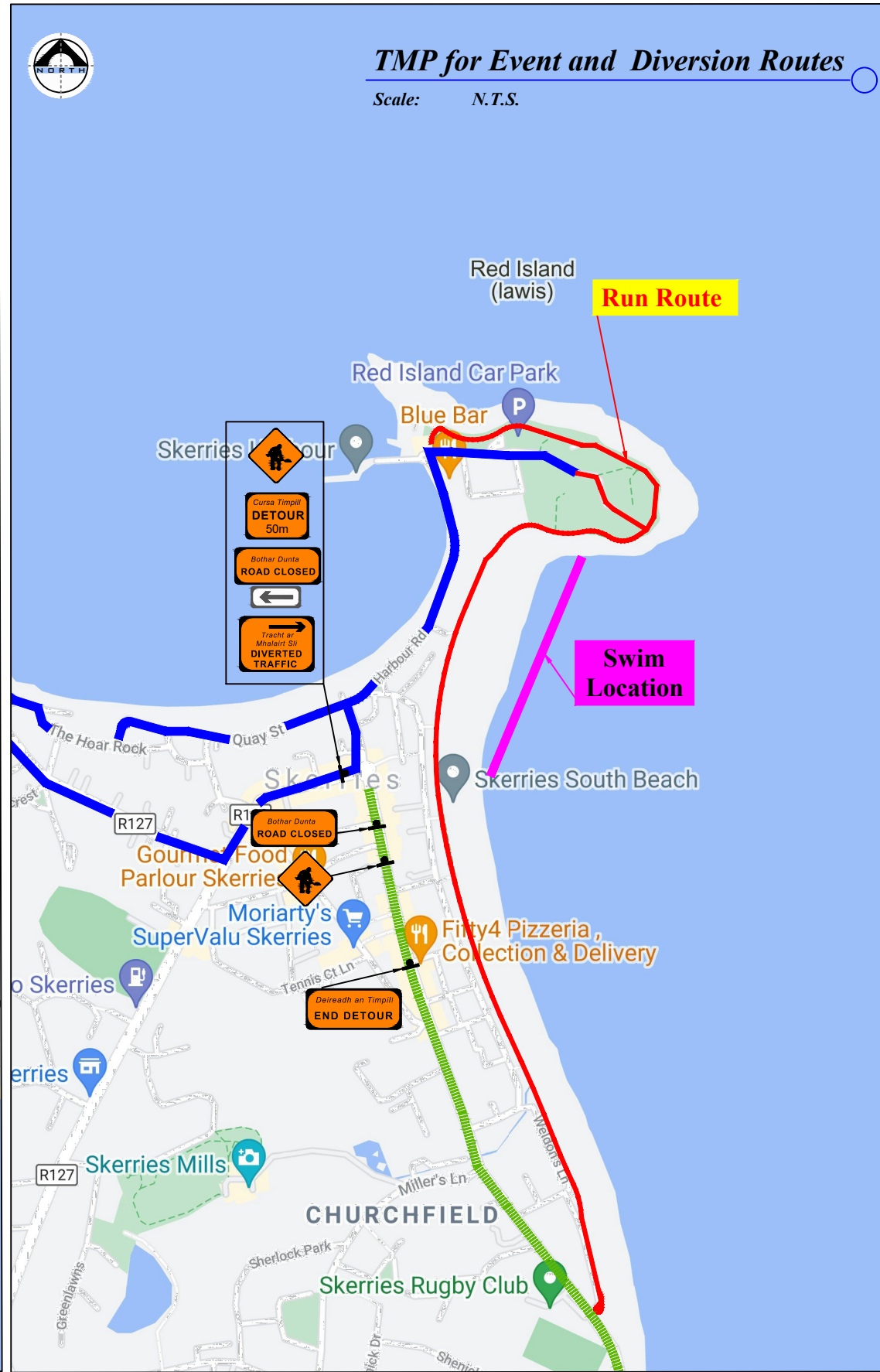
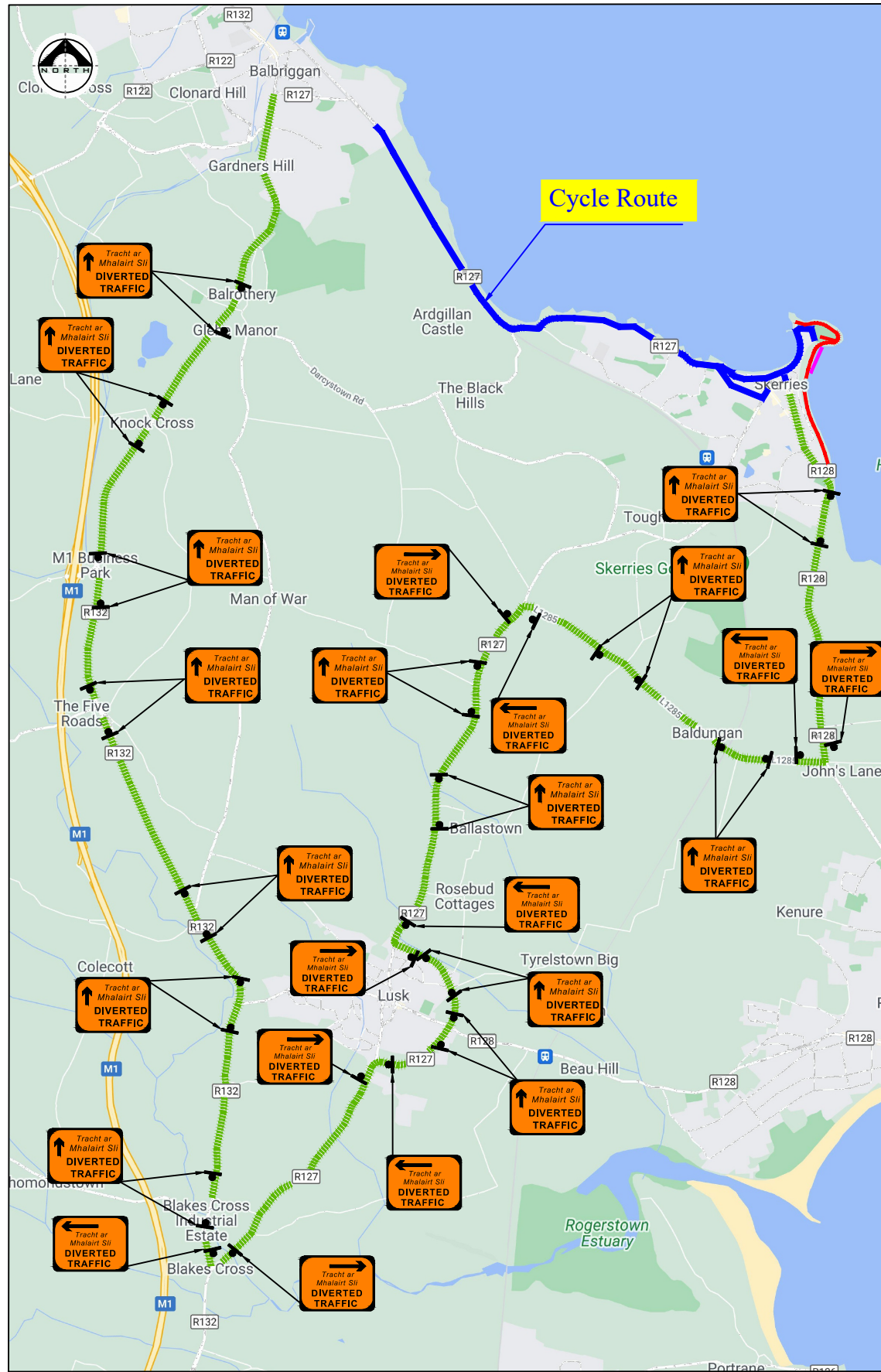


***PROPOSED TRAFFIC
MANAGEMENT SCHEME***

for

***Proposed Skerries Triathlon
on Sunday 12th July
2026***





LEGEND

- Sign Location
- Traffic Cones
- Cycle Route
- Run Route
- Swim Location
- Diversion Route
- Traffic Management Operative or Marshal

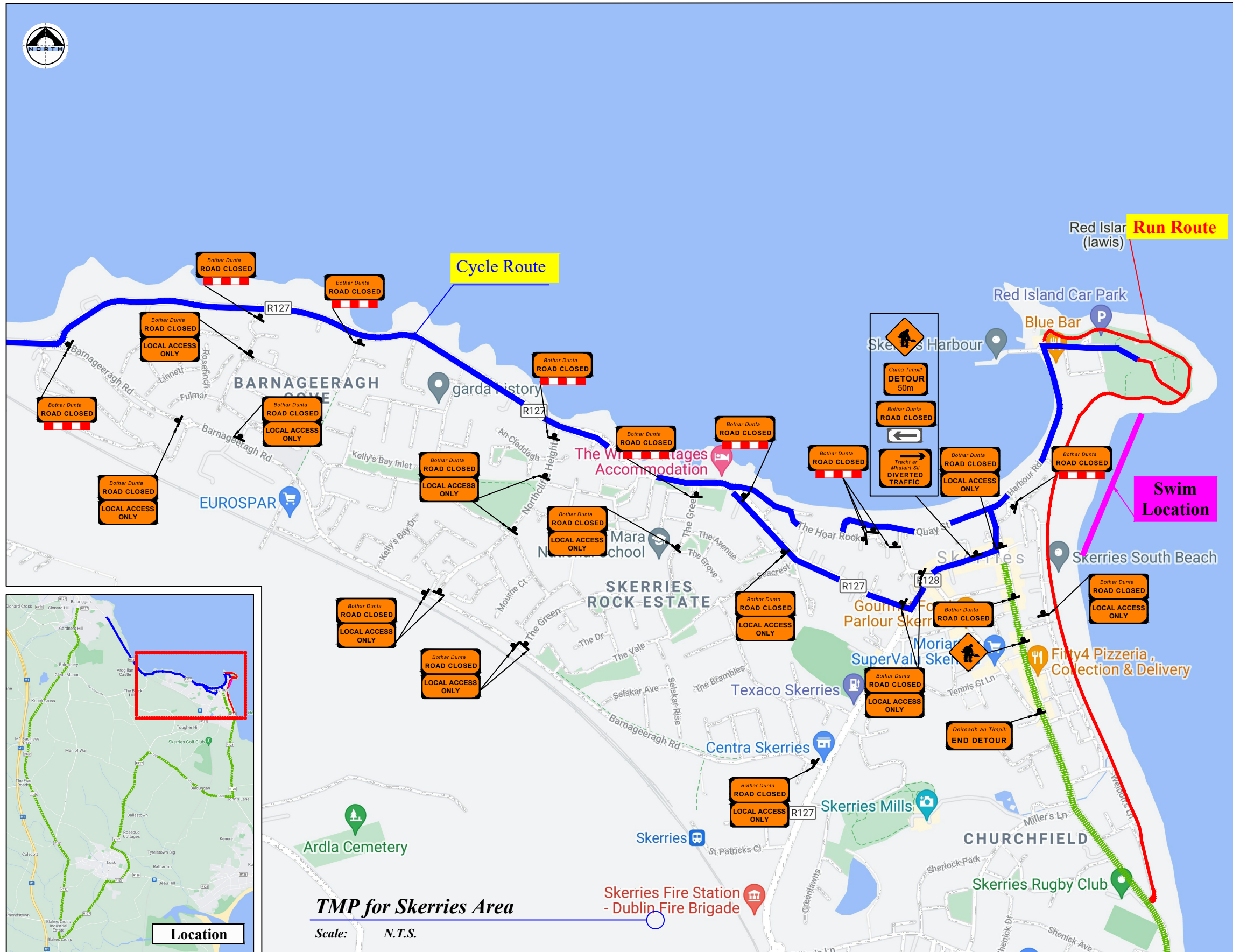
Works TTM type:	Static Type A				
Design Parameters:	Design Type A: >12h				
	LV-1 (I)	LV-1 (III)	LV-1 (IV)	LV-2 (I)	LV-2 (II)
1. Minimum Sign Size mm	450	600	600	600	750
2. Statutory Speed of the Road	30km/h	50	60	80	100
3. Distance between Advance Signs	10m	20m	20m	120m	200m
4. Number of Advance Signs	1 (<12h) 2 (>12h)	2	3 (<12h) 2 (>12h)	3 (<12h) 4 (>12h)	3 (<12h) 4 (>12h)
5. Minimum Visibility of Signs	25m	50m	60m	90m	120m
6. Longitudinal Safety Zone	0.5m	5m	15m	45m	60m
7. Lateral Safety Zone	0.5m	0.5m	0.5m	1.2m	1.2m
8. Leading Taper	1in1m	1in5m	1in10m	1in40	1in100
9. Maximum at Tapers Cone Space	1m	3m	3m	3m	3m
10. Maximum Longitudinal Cone Space	3m	3m	6m	12m	12m
11. Lane Width (m)	2.5m	3 (2.5)	3 (2.5)	3 m	3 m
12. Two-way Roadway width (m)	5m	5m	5m	-	-

Note:

- All signs to comply with Chapter 8 of the "Traffic Signs Manual"-Guidance Document-2019.
- All Traffic Management to be carried out in accordance with Chapter 8 of the "Traffic Signs Manual".
- Detailed Risk Assessment to be carried out prior to the installation of Traffic Management System.
- Exact sign positions to be agreed on site.
- All affected Parties and An Garda Siochana to be notified prior to works commencing.
- Signs to be positioned so as not to cause an obstruction to other road users.
- All signs to be faced with retro-reflective material to class ref 2 of EN 12899.
- "End of Roadworks" sign placed 20m to 50m from end of works area.
- Emergency routes will be maintained.



Rev:	Description:	Date:	Job Details:	Drawing:	Dwg no:
			Proposed Traffic Management Plan for Skerries Triathlon on Sunday 12th July 2026	TMP for Event and Diversion Routes	01
					Rev:
			Sheet:	Drawn By:	Scale:
			CAD File ref.:	DM	As Shown
				Date:	
				January 2026	



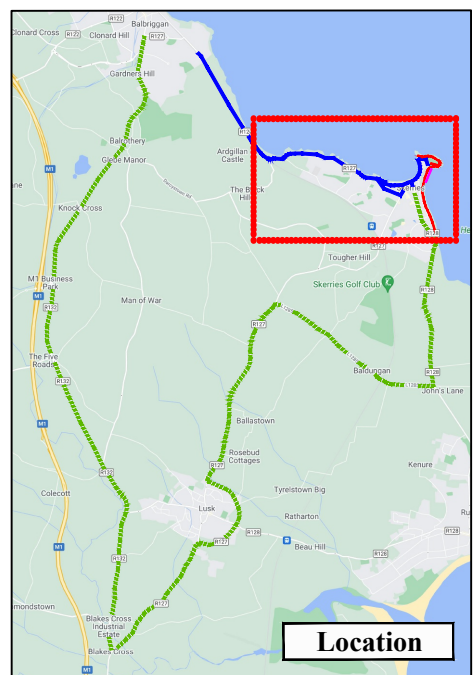
LEGEND

- Sign Location
- Traffic Cones
- Cycle Route
- Run Route
- Swim Location
- Diversion Route
- Traffic Management Operative or Marshal

Works TTM type:	Static Type A				
Design Parameters:	Design Type A: >12h				
	LV-1 (I)	LV-1 (III)	LV-1 (IV)	LV-2 (I)	LV-2 (II)
1. Minimum Sign Size mm	450	600	600	600	750
2. Statutory Speed of the Road	30km/h	50	60	80	100
3. Distance between Advance Signs	10m	20m	20m	120m	200m
4. Number of Advance Signs	1 (<12h) 2 (>12h)	2	3 (<12h) 2 (>12h)	3 (<12h) 4 (>12h)	3 (<12h) 4 (>12h)
5. Minimum Visibility of Signs	25m	50m	60m	90m	120m
6. Longitudinal Safety Zone	0.5m	5m	15m	45m	60m
7. Lateral Safety Zone	0.5m	0.5m	0.5m	1.2m	1.2m
8. Leading Taper	1in1m	1in5m	1in10m	1in40	1in100m
9. Maximum at Tapers Cone Space	1m	3m	3m	3m	3m
10. Maximum Longitudinal Cone Space	3m	3m	6m	12m	12m
11. Lane Width (m)	2.5m	3 (2.5)	3 (2.5)	3 m	3 m
12. Two-way Roadway width (m)	5m	5m	5m	-	-

Note:

- All signs to comply with Chapter 8 of the "Traffic Signs Manual"-Guidance Document-2019.
- All Traffic Management to be carried out in accordance with Chapter 8 of the "Traffic Signs Manual".
- Detailed Risk Assessment to be carried out prior to the installation of Traffic Management System.
- Exact sign positions to be agreed on site.
- All affected Parties and An Garda Síochána to be notified prior to works commencing.
- Signs to be positioned so as not to cause an obstruction to other road users.
- All signs to be faced with retro-reflective material to class ref 2 of EN 12899.
- "End of Roadworks" sign placed 20m to 50m from end of works area.
- Emergency routes will be maintained.

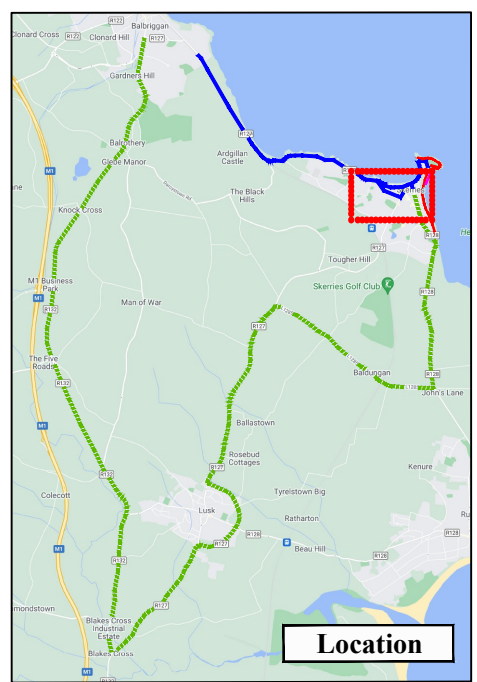
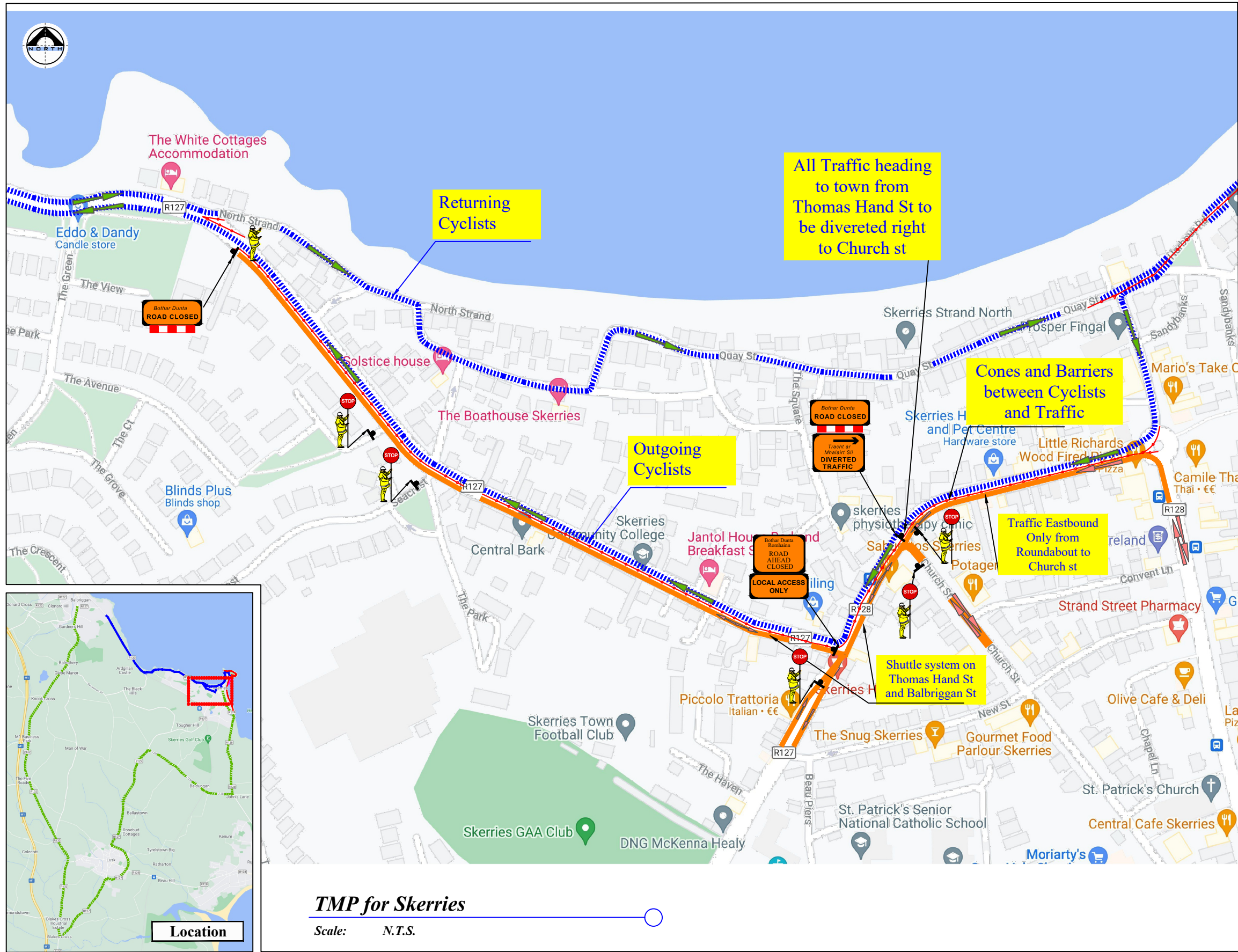


TMP for Skerries Area

Scale: N.T.S.



Rev:	Description:	Date:	Job Details:	Drawing:	Dwg no:
			Proposed Traffic Management Plan for Skerries Triathlon on Sunday 12th July 2026	TMP Road Closures	02
					Rev:
			Sheet:	Drawn By:	Scale:
			CAD File ref.:	DM	As Shown
				Date:	
				January 2026	



TMP for Skerries

Scale: N.T.S.

LEGEND

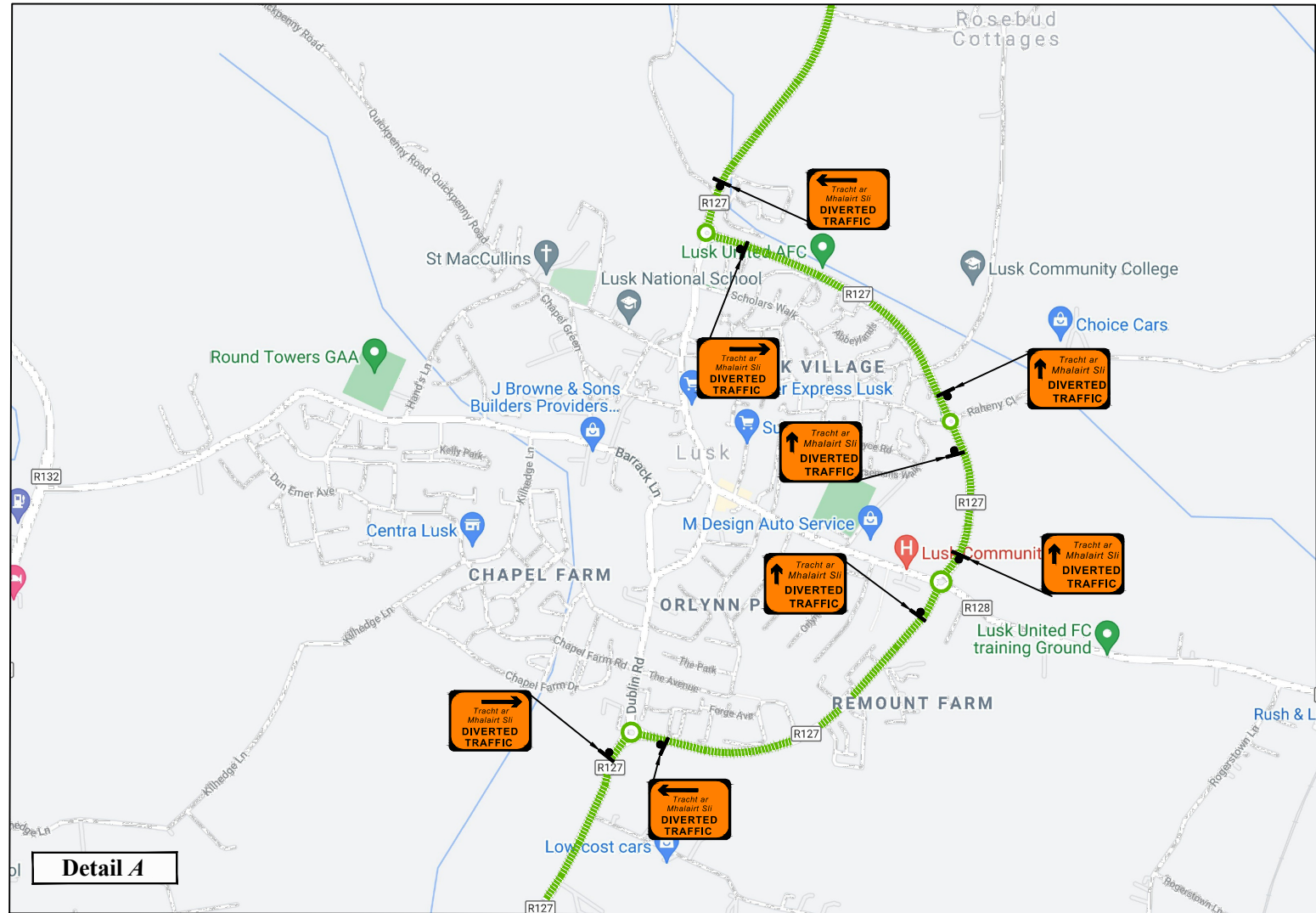
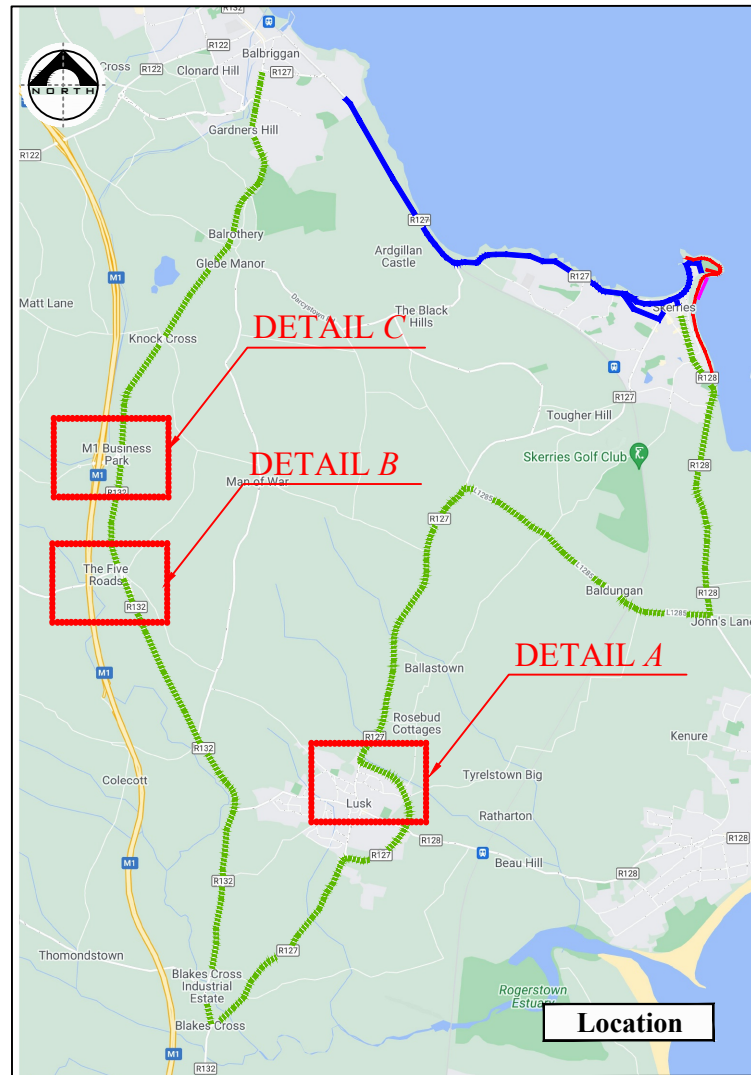
- Sign Location
- Traffic Cones
- Cycle Route
- Run Route
- Swim Location
- Diversion Route
- Traffic Management Operative or Marshal

Works TTM type:	Static Type A				
	Design Type A: >12h				
Design Parameters:	LV-1 (I)	LV-1 (III)	LV-1 (IV)	LV-2 (I)	LV-2 (II)
	1. Minimum Sign Size mm	450	600	600	600
2. Statutory Speed of the Road	30km/h	50	60	80	100
3. Distance between Advance Signs	10m	20m	20m	120m	200m
4. Number of Advance Signs	1 (<12h) 2 (>12h)	2	3 (<12h) 2 (>12h)	3 (<12h) 4 (>12h)	3 (<12h) 4 (>12h)
5. Minimum Visibility of Signs	25m	50m	60m	90m	120m
6. Longitudinal Safety Zone	0.5m	5m	15m	45m	60m
7. Lateral Safety Zone	0.5m	0.5m	0.5m	1.2m	1.2m
8. Leading Taper	1in1m	1in5m	1in10m	1in40	1in100
9. Maximum at Tapers Cone Space	1m	3m	3m	3m	3m
10. Maximum Longitudinal Cone Space	3m	3m	6m	12m	12m
11. Lane Width (m)	2.5m	3 (2.5)	3 (2.5)	3 m	3 m
12. Two-way Roadway width (m)	5m	5m	5m	-	-

Note:

- All signs to comply with Chapter 8 of the "Traffic Signs Manual"-Guidance Document-2019.
- All Traffic Management to be carried out in accordance with Chapter 8 of the "Traffic Signs Manual".
- Detailed Risk Assessment to be carried out prior to the installation of Traffic Management System.
- Exact sign positions to be agreed on site.
- All affected Parties and An Garda Siochana to be notified prior to works commencing.
- Signs to be positioned so as not to cause an obstruction to other road users.
- All signs to be faced with retro-reflective material to class ref 2 of EN 12899.
- "End of Roadworks" sign placed 20m to 50m from end of works area.
- Emergency routes will be maintained.

	Rev:	Description:	Date:	Job Details:	Drawing:	Dwg no:
				Proposed Traffic Management Plan for Skerries Triathlon on Sunday 12th July 2026	TMP for Road Closed and Stop & Go System	02a
				Sheet:	CAD File ref.:	Rev:
					Drawn By:	Scale:
					DM	As Shown
					Date:	
					January 2026	

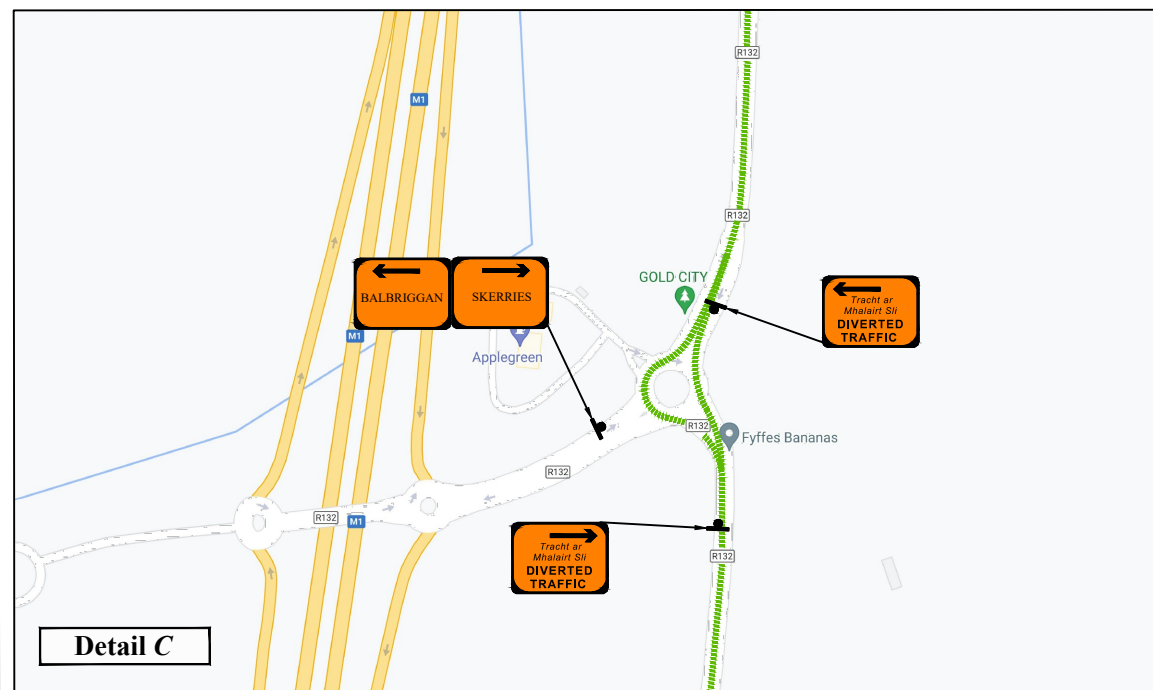


LEGEND

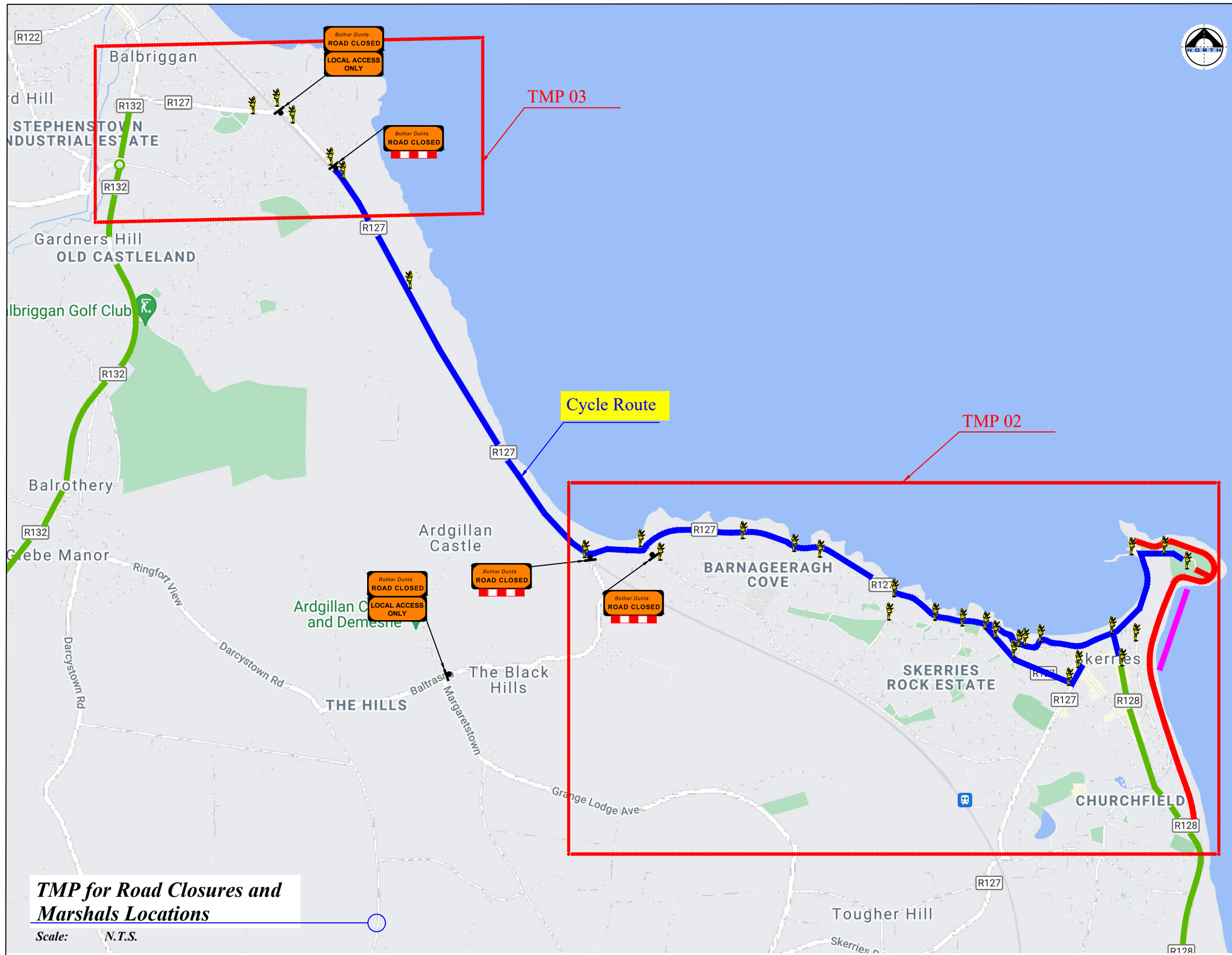
- Sign Location
- Traffic Cones
- Cycle Route
- Run Route
- Swim Route
- Diversion Route
- Traffic Management Operative or Marshal

Works TTM type:	Static Type A				
	Design Type A: >12h				
	LV-1 (I)	LV-1 (III)	LV-1 (IV)	LV-2 (I)	LV-2 (II)
Design Parameters:					
1. Minimum Sign Size mm	450	600	600	600	750
2. Statutory Speed of the Road	30km/h	50	60	80	100
3. Distance between Advance Signs	10m	20m	20m	120m	200m
4. Number of Advance Signs	1 (<12h) 2 (>12h)	2	3 (<12h) 2 (>12h)	3 (<12h) 4 (>12h)	3 (<12h) 4 (>12h)
5. Minimum Visibility of Signs	25m	50m	60m	90m	120m
6. Longitudinal Safety Zone	0.5m	5m	15m	45m	60m
7. Lateral Safety Zone	0.5m	0.5m	0.5m	1.2m	1.2m
8. Leading Taper	1in1m	1in5m	1in10m	1in40	1in100m
9. Maximum at Tapers Cone Space	1m	3m	3m	3m	3m
10. Maximum Longitudinal Cone Space	3m	3m	6m	12m	12m
11. Lane Width (m)	2.5m	3 (2.5)	3 (2.5)	3 m	3 m
12. Two-way Roadway width (m)	5m	5m	5m	-	-

- Note:**
- All signs to comply with Chapter 8 of the "Traffic Signs Manual"-Guidance Document-2019.
 - All Traffic Management to be carried out in accordance with Chapter 8 of the "Traffic Signs Manual".
 - Detailed Risk Assessment to be carried out prior to the installation of Traffic Management System.
 - Exact sign positions to be agreed on site.
 - All affected Parties and An Garda Siochana to be notified prior to works commencing.
 - Signs to be positioned so as not to cause an obstruction to other road users.
 - All signs to be faced with retro-reflective material to class ref 2 of EN 12899.
 - "End of Roadworks" sign placed 20m to 50m from end of works area.
 - Emergency routes will be maintained.



	Rev:	Description:	Date:	Job Details:	Drawing:	Dwg no:
				Proposed Traffic Management Plan for Skerries Triathlon on Sunday 12th July 2026	TMP for Diversion Route	04
				Sheet:	CAD File ref.:	Rev:
				Drawn By:	Date:	Scale:
				DM	January 2026	As Shown



LEGEND

- Sign Location
- Traffic Cones
- Cycle Route
- Run Route
- Swim Location
- Diversion Route
- Traffic Management Operative or Marshal

Works TTM type:	Static Type A				
Design Parameters:	Design Type A: >12h				
	LV-1 (I)	LV-1 (III)	LV-1 (IV)	LV-2 (I)	LV-2 (II)
1. Minimum Sign Size mm	450	600	600	600	750
2. Statutory Speed of the Road	30km/h	50	60	80	100
3. Distance between Advance Signs	10m	20m	20m	120m	200m
4. Number of Advance Signs	1 (<12h) 2 (>12h)	2	3 (<12h) 2 (>12h)	3 (<12h) 4 (>12h)	3 (<12h) 4 (>12h)
5. Minimum Visibility of Signs	25m	50m	60m	90m	120m
6. Longitudinal Safety Zone	0.5m	5m	15m	45m	60m
7. Lateral Safety Zone	0.5m	0.5m	0.5m	1.2m	1.2m
8. Leading Taper	1in1m	1in5m	1in10m	1in40	1in100m
9. Maximum at Tapers Cone Space	1m	3m	3m	3m	3m
10. Maximum Longitudinal Cone Space	3m	3m	6m	12m	12m
11. Lane Width (m)	2.5m	3 (2.5)	3 (2.5)	3 m	3 m
12. Two-way Roadway width (m)	5m	5m	5m	-	-

- Note:**
- All signs to comply with Chapter 8 of the "Traffic Signs Manual"-Guidance Document-2019.
 - All Traffic Management to be carried out in accordance with Chapter 8 of the "Traffic Signs Manual".
 - Detailed Risk Assessment to be carried out prior to the installation of Traffic Management System.
 - Exact sign positions to be agreed on site.
 - All affected Parties and An Garda Síochána to be notified prior to works commencing.
 - Signs to be positioned so as not to cause an obstruction to other road users.
 - All signs to be faced with retro-reflective material to class ref 2 of EN 12899.
 - "End of Roadworks" sign placed 20m to 50m from end of works area.
 - Emergency routes will be maintained.

TMP for Road Closures and Marshals Locations
Scale: N.T.S.



Rev:	Description:	Date:	Job Details:	Drawing:	Dwg no:
			Proposed Traffic Management Plan for Skerries Triathlon on Sunday 12th July 2026	TMP Road Closures and Marshals Locations	05
			Sheet:	Drawn By:	Rev:
			CAD File ref.:	DM	
				Date:	Scale:
				January 2026	As Shown



LEGEND

- Sign Location
- Traffic Cones
- Cycle Route
- Run Route
- Swim Location
- Diversion Route
- Traffic Management Operative or Marshal

Works TTM type:	Static Type A				
	Design Type A: >12h				
Design Parameters:	LV-1 (I)	LV-1 (III)	LV-1 (IV)	LV-2 (I)	LV-2 (II)
1. Minimum Sign Size mm	450	600	600	600	750
2. Statutory Speed of the Road	30km/h	50	60	80	100
3. Distance between Advance Signs	10m	20m	20m	120m	200m
4. Number of Advance Signs	1 (<12h) 2 (>12h)	2	3 (<12h) 2 (>12h)	3 (<12h) 4 (>12h)	3 (<12h) 4 (>12h)
5. Minimum Visibility of Signs	25m	50m	60m	90m	120m
6. Longitudinal Safety Zone	0.5m	5m	15m	45m	60m
7. Lateral Safety Zone	0.5m	0.5m	0.5m	1.2m	1.2m
8. Leading Taper	1in1m	1in5m	1in10m	1in40	1in100
9. Maximum at Tapers Cone Space	1m	3m	3m	3m	3m
10. Maximum Longitudinal Cone Space	3m	3m	6m	12m	12m
11. Lane Width (m)	2.5m	3 (2.5)	3 (2.5)	3 m	3 m
12. Two-way Roadway width (m)	5m	5m	5m	-	-

Note:

- All signs to comply with Chapter 8 of the "Traffic Signs Manual"-Guidance Document-2019.
- All Traffic Management to be carried out in accordance with Chapter 8 of the "Traffic Signs Manual".
- Detailed Risk Assessment to be carried out prior to the installation of Traffic Management System.
- Exact sign positions to be agreed on site.
- All affected Parties and An Garda Siochana to be notified prior to works commencing.
- Signs to be positioned so as not to cause an obstruction to other road users.
- All signs to be faced with retro-reflective material to class ref 2 of EN 12899.
- "End of Roadworks" sign placed 20m to 50m from end of works area.
- Emergency routes will be maintained.
- Large fixed signage will be placed at junctions to closed roads 2 weeks prior to event.
- 4x VMS signs will be placed at key road closure points 1 week prior to event.

Prior to event: VMS message will display road closure notice forthcoming.
During event: VMS message will display roads closed message / follow detours.

TMP for VMS and Advance Warning signs locations

Scale: N.T.S.



Rev:	Description:	Date:	Job Details:	Drawing:	Dwg no:
			Proposed Traffic Management Plan for Skerries Triathlon on Sunday 12th July 2026	TMP for VMS and Advance Warning signs locations	06
			Sheet:	Drawn By: DM	Rev:
			CAD File ref.:	Date: January 2026	Scale: As Shown