

Zoning Objectives

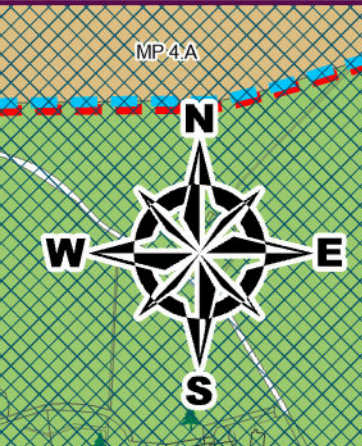
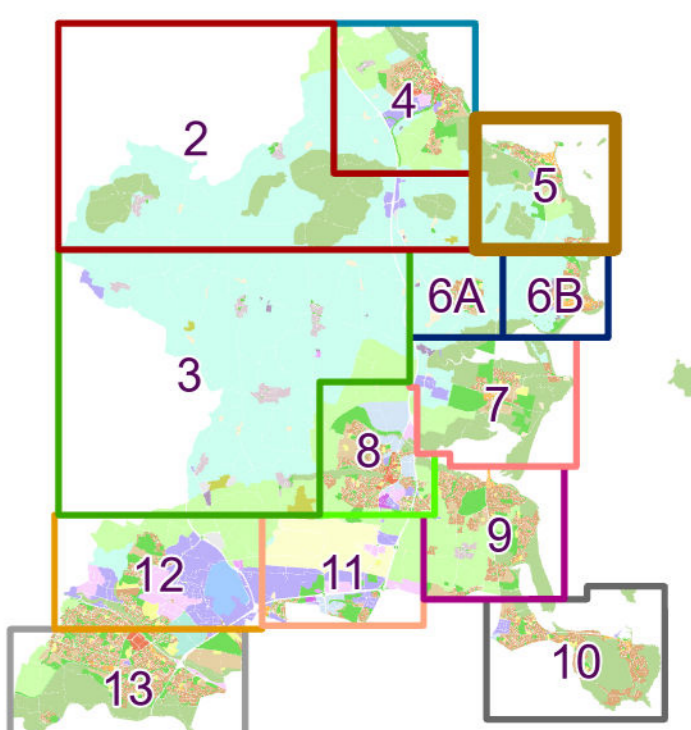
CI - Community Infrastructure	Provide for and protect civic, religious, community, education, health care and social infrastructure
GB - Greenbelt	Protect and provide for a Greenbelt
GE - General Employment	Provide opportunities for general enterprise and employment
HA - High Amenity	Protect and enhance high amenity areas
LC - Local Centre	Protect, provide for and/or improve local centre facilities
OS - Open Space	Preserve and provide for open space and recreational amenities
RA - Residential Area	Provide for new residential communities subject to the provision of the necessary social and physical infrastructure
RC - Rural Cluster	Provide for small scale infill development serving local needs while maintaining the rural nature of the cluster
RS - Residential	Provide for residential development and protect and improve residential amenity
RU - Rural	Protect and promote in a balanced way, the development of agriculture and rural-related enterprise, biodiversity, the rural landscape, and the built and cultural heritage
TC - Town and District Centre	Protect and enhance the special physical and social character of town and district centres and provide and/or improve urban facilities

Specific Objectives

	County Boundary
	Architectural Conservation Area
	Burial Site
	Development Boundary
	Recreational Routes
	Road Proposal
	Preserve Views
	(GDA) Cycle Network Plan
	Sustrans 2009 Cycle Study Routes
	Local Objective Points
	Protected Structures
	Sites and Monuments Record (SMR)
	Coastal Walk
	Proposed School
	Traveller Accommodation
	Protect & Preserve Trees, Woodlands and Hedgerows

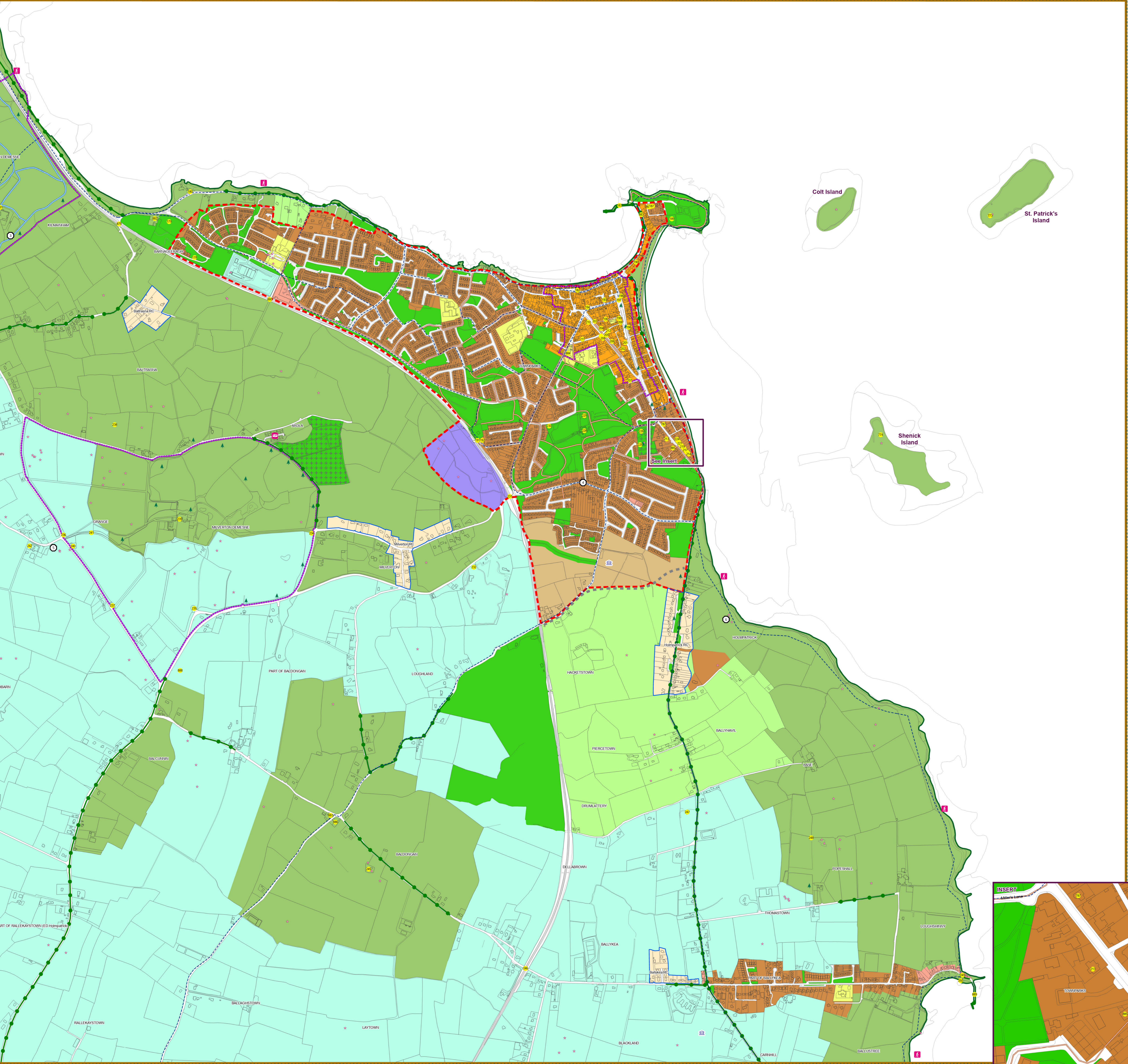
Note:
For further detail please refer to the Written Statement, Written Statement Appendices, the Green Infrastructure Maps and the Connectivity and Movement Map.
The GDA cycle networks are an extract from:
<https://www.nationaltransport.ie/planning-and-investment/transport-investment/greater-dublin-area-cycle-network-plan>
(Please see this website for further information)
To view details of Sites and Monuments Record see:
<https://maps.archaeology.ie/HistoricEnvironment/>

Sheet Index Map



SEE SHEET 4
BALBRIGGAN

SEE SHEET 2
FINGAL NORTH

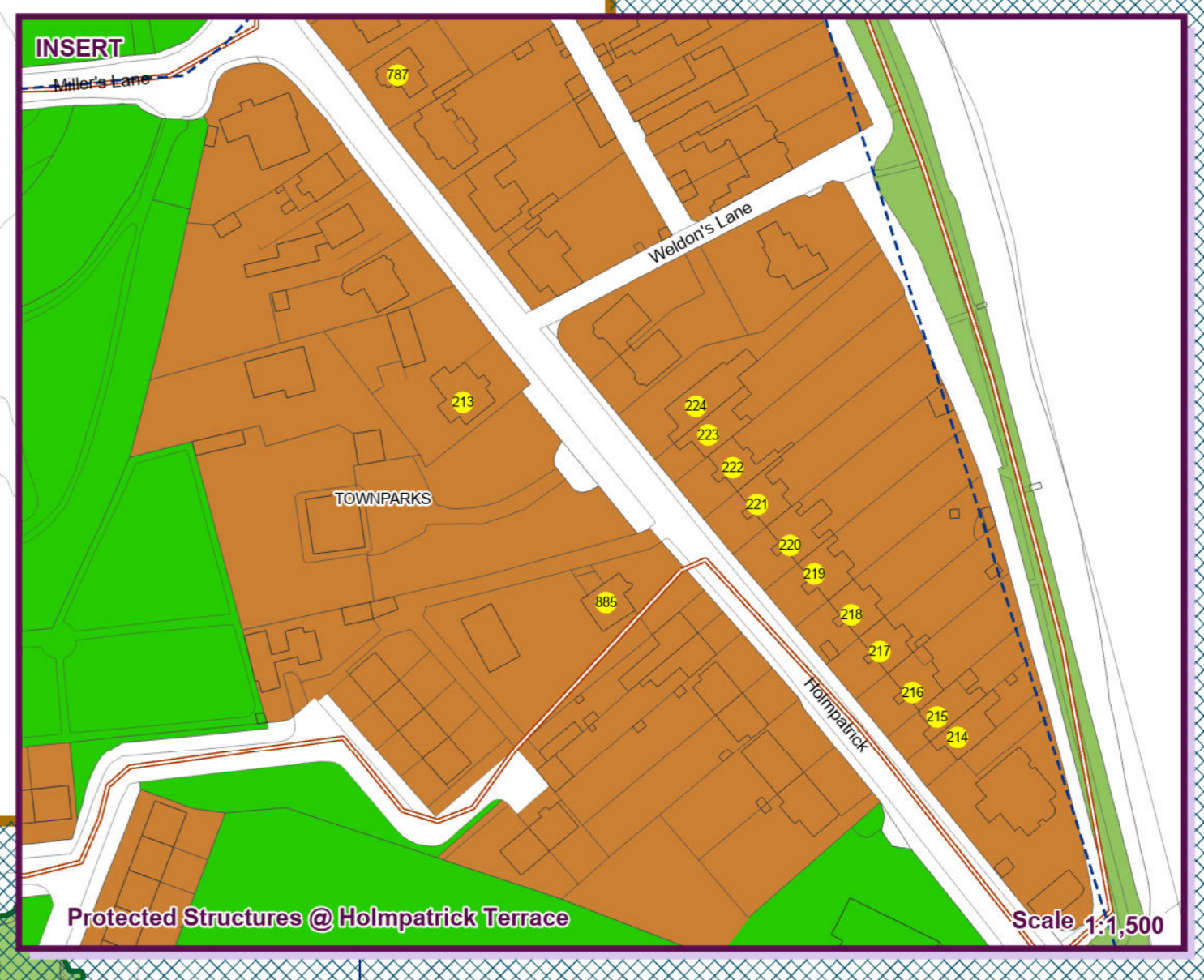


Coit Island

St. Patrick's Island

Shenick Island

Skerries



SEE SHEET 6A
LUSK

SEE SHEET 6B
RUSH