



### Upcoming Works/ Additional Information

- 3rd February Traffic Management will be erected on Estuary Road & to facilitate setting up the compound. Two-way traffic will be maintained.
- Phase 01 - 5<sup>th</sup> February work commencing Ch 0 -115 North carriageway. Traffic management shuttle system in place 5<sup>th</sup> and 6<sup>th</sup> February to facilitate installation of road barriers and line marking.

### Key Contacts:

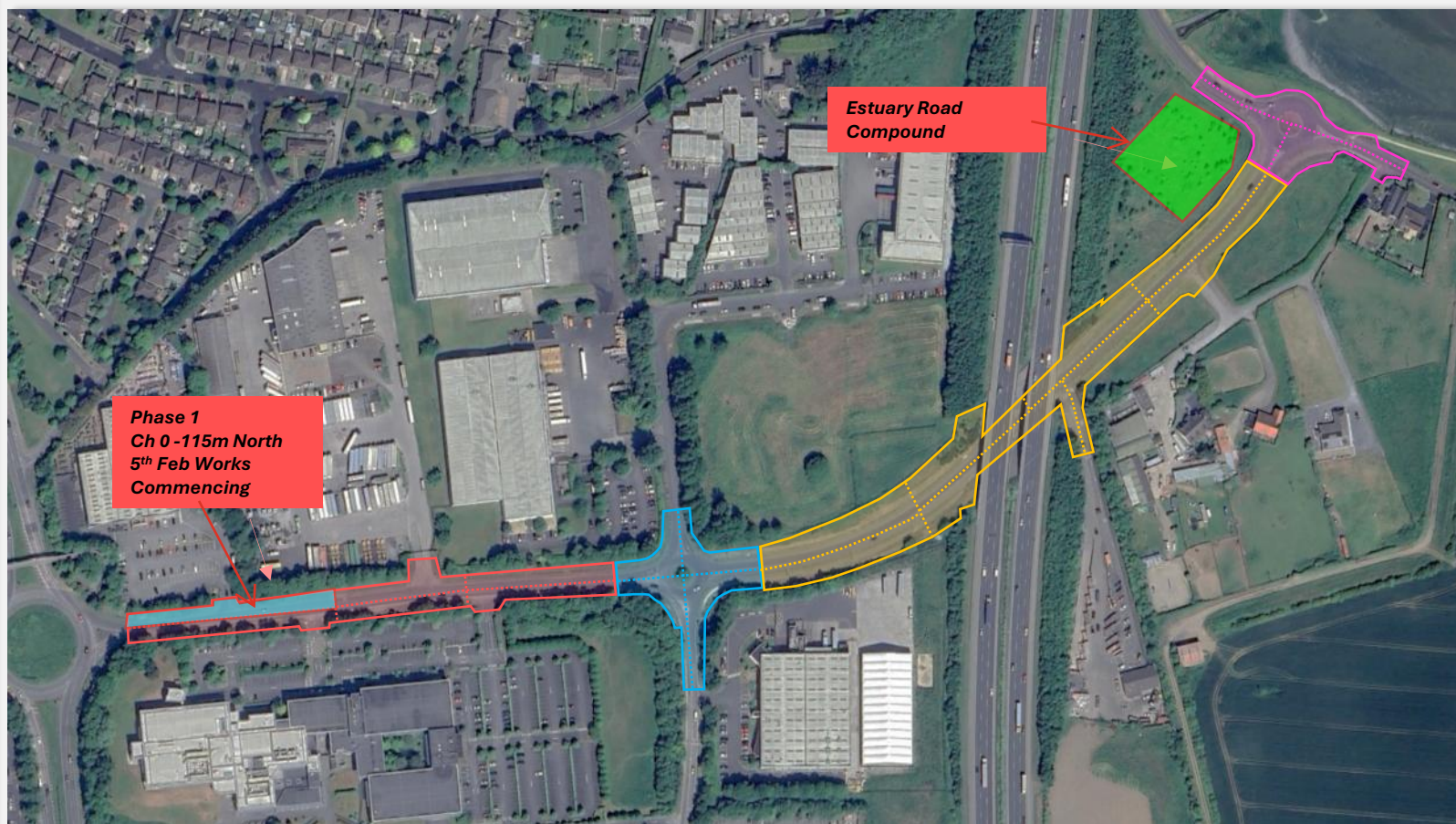
Project Contractor – JCL Ltd  
Tel – 045 484484



JOHN CRADOCK LTD



For more information  
please scan



Thank you for your continued patience and support as we deliver this important project for the community