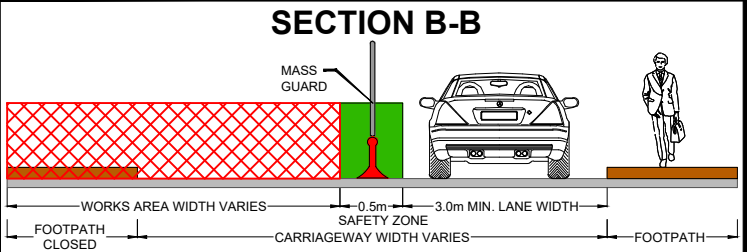
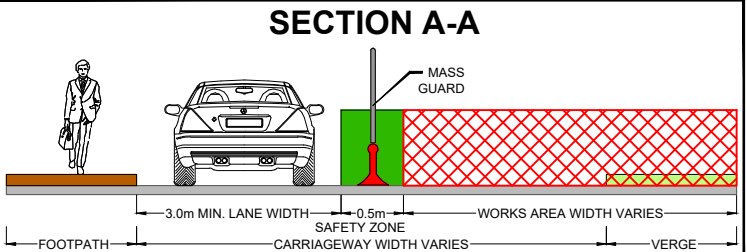
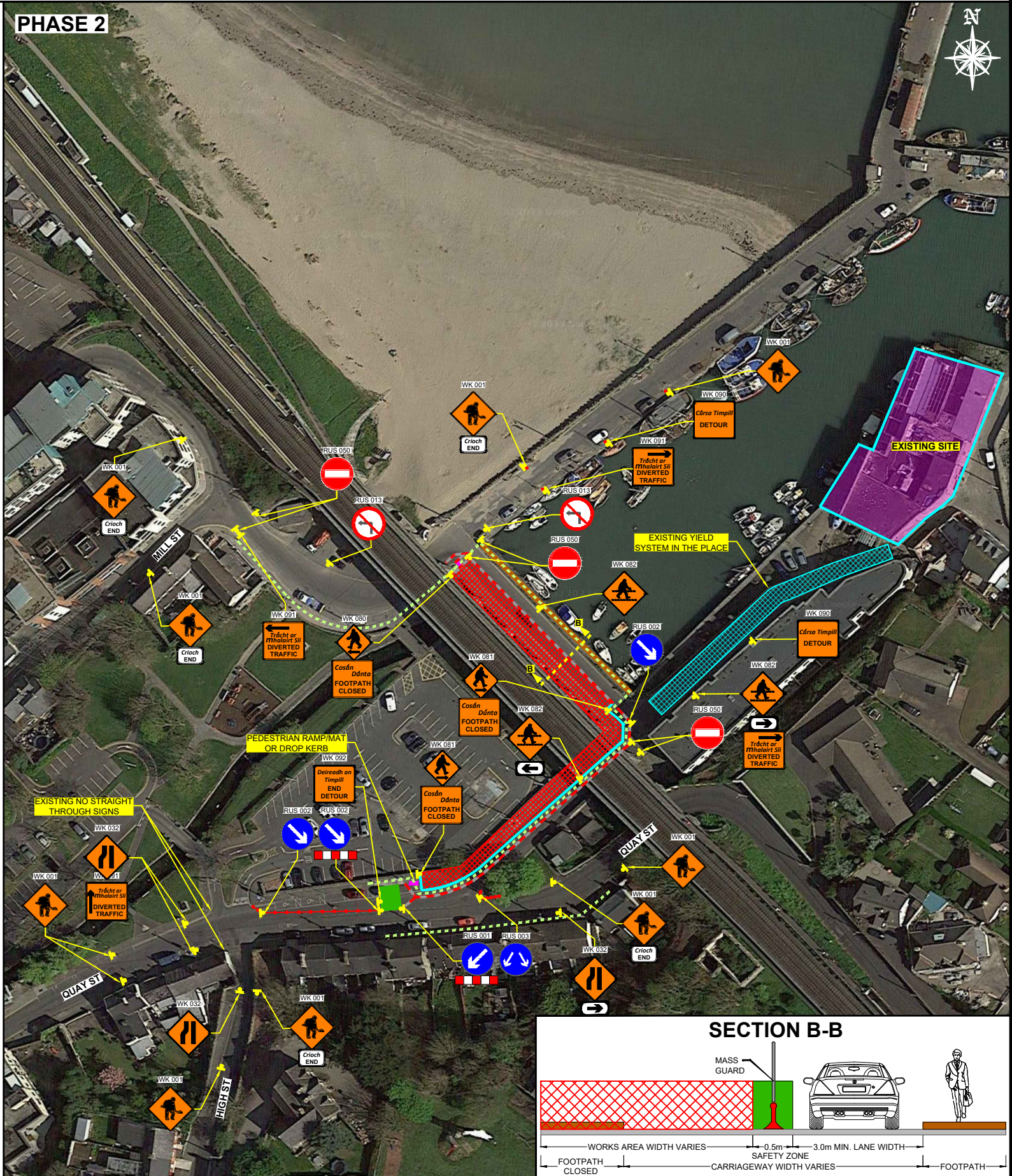
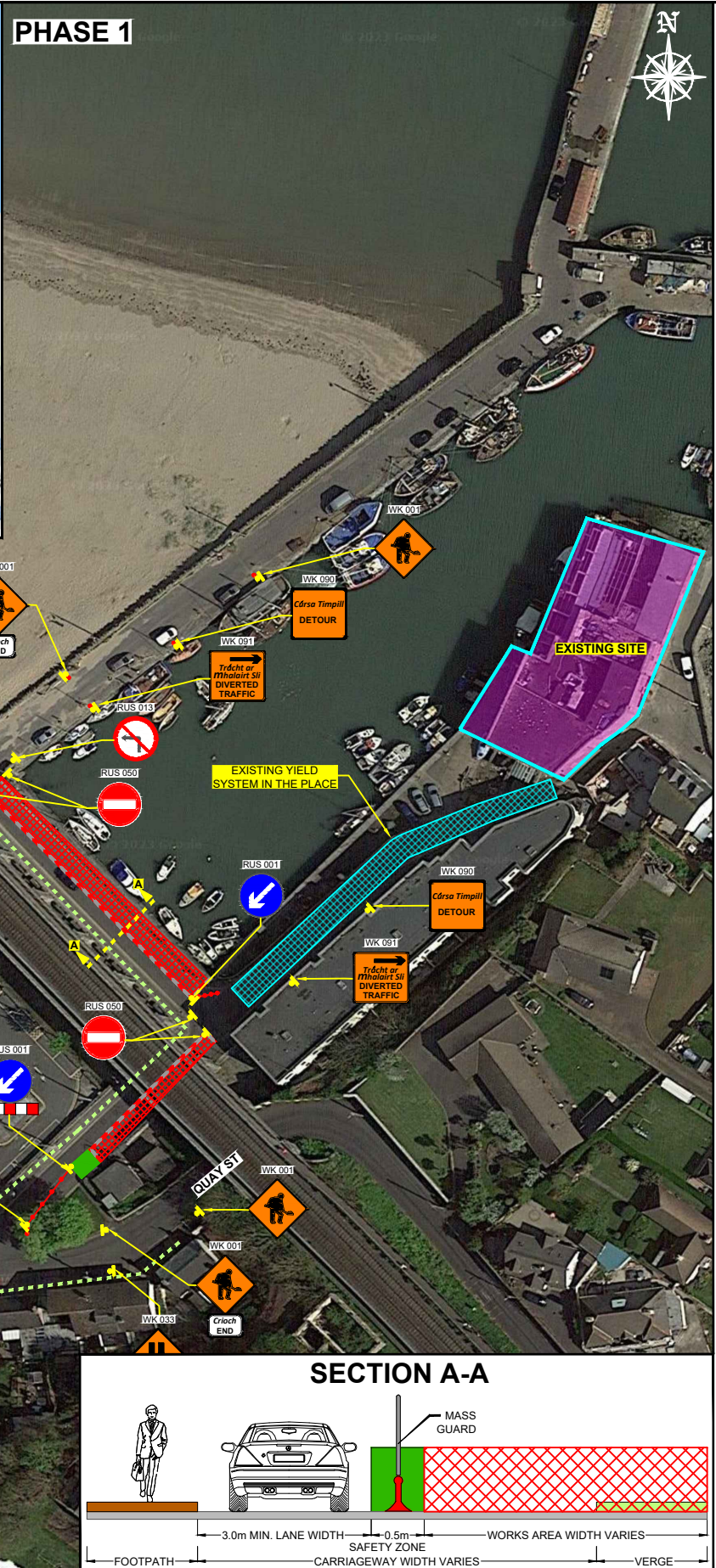
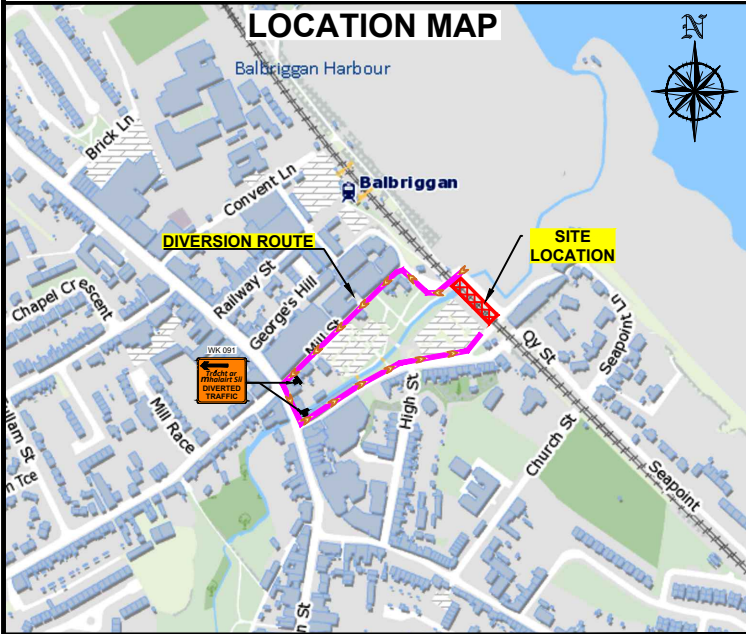


HARBOUR RD, BALBRIGGAN, CO. DUBLIN - ONE-WAY SYSTEM TTM LAYOUT



DESIGN PARAMETERS				SAFETY ZONE			TEMPORARY SIGNS				CONE SPACING AND SIZE			RATE OF TAPER		LAMP SPACING		TRAFFIC MANAGEMENT SYSTEM		
Road Lvl(Sub)	Roadworks	Speed Limit (km/h)	Min. Lane Width (m)	Longitudinal (m)	Lateral (m)	Set Back (m)	Distance (m)	Number	Min. Size (mm)	Sign Visibility (m)	Longitudinal (m)	At Tapers (m)	Min. Height (mm)	Taper at H/S (m)	Taper at Lane (m)	At Tapers (m)	Longitudinal (m)	Method	Coned Area Length (m)	Max. Traffic Flow (veh/h)
1 (iii)	A	50	3.00	5	0.5	-	20	2	600	50	3	3	750	45°	45°	6	6	One-Way	80	840
<div>NOTES:</div> <div><div>1) ALL INFORMATION CONTAINED IN THIS DRAWING SHOULD BE CHECKED AND VERIFIED BY CONTRACTOR PRIOR TO ANY STAGE OF CONSTRUCTION.</div><div>2) ALL WORKS ARE TO BE CARRIED OUT IN ACCORDANCE WITH LOCAL AUTHORITY REQUIREMENTS AND ARE TO BE INCLUDED IN THE SITE-SPECIFIC SAFETY &amp; HEALTH PLAN.</div><div>3) A SITE-SPECIFIC RISK ASSESSMENT SHALL BE CONDUCTED PRIOR TO IMPLEMENTING THE TEMPORARY TRAFFIC MANAGEMENT PLAN TO ENSURE THAT THE ACTUAL SITE CONDITIONS ALIGN WITH THOSE CONSIDERED DURING THE DESIGN PHASE FOLLOWING SUBMISSION</div><div>4) CONTRACTOR SHALL BE RESPONSIBLE FOR THE PROVISION OF RAMP ACCESS AT ANY CHANGE IN ROAD SURFACE LEVEL WHERE TRAFFIC RUNS ON A TEMPORARY SURFACE.</div><div>5) THIS TRAFFIC MANAGEMENT PLAN MAY ONLY BE IMPLEMENTED BY A TTOS WHO MUST CARRY OUT A RISK ASSESSMENT BEFORE IMPLEMENTATION. TTOS MUST BE IN POSSESSION OF CSCS CARD "SIGNING, LIGHTNING AND GUARDING AT ROAD WORKS" CONSTRUCTION REGULATIONS 2006.</div><div>6) EXACT SIGNS POSITIONS TO BE AGREED ON SITE.</div><div>7) ACCESS TO BE MAINTAINED TO ALL DWELLINGS / BUSINESSES AT ALL TIMES.</div><div>8) SITE INSPECTIONS AND MAINTENANCE OF THE TRAFFIC MANAGEMENT LAYOUT IS TO BE CONDUCTED ON A DAILY BASIS TO ENSURE THE SAFETY AND INTEGRITY OF THE DESIGN.</div><div>9) ALL TEMPORARY FOOTPATHS MUST HAVE A GOOD QUALITY, EVEN SURFACE AND BE MAINTAINED FREE FROM OBSTRUCTION.</div><div>10) PEDESTRIANS TO BE PROTECTED FROM WORKS AREA BY PEDESTRIAN BARRIER SYSTEM.</div><div>11) TM OPERATIVES TO MANAGE SITE ACCESS/EGRESS AND MARSHAL PEDESTRIANS DURING WORKS HOURS.</div><div>12) TM OPERATIVES TO MAINTAIN CLOSURE, MARSHAL PEDESTRIANS AND INFORM DRIVERS ABOUT DIVERSION ROUTES.</div><div>13) RESIDENTS TO BE INFORMED BEFORE COMMENCING THE WORKS.</div></div>																				

**LEGEND**

- TRAFFIC CONES
- SIGN LOCATION
- WORKS AREA
- SAFETY ZONE
- SITE FENCE
- PEDESTRIAN ROUTE
- HIGH FENCE
- MASSGUARD BARRIER
- EXISTING SITE
- PEDESTRIAN RAMP/ MAT/DROP KERB
- DIVERSION ROUTE

**GARY KEVILLE TRAFFIC MANAGEMENT LTD.**  
Rosemount Business Park, Dublin 11, Co. Dublin, Ireland  
Tel: (+3531) 667 4322; Email: [info@gktm.ie](mailto:info@gktm.ie)  
Visit us at: [www.gktm.ie](http://www.gktm.ie)

**CLIENT:**  
**JOHN CRADOCK LTD**

**DESIGNED:** AZ  
**DRAWN:** VB  
**VERIFIED:** SS  
**APPROVED:** AZ

**SCALE:** NTS  
**DATE:** 12-05-2025

**PROJECT TITLE:** HARBOUR RD, BALBRIGGAN, CO. DUBLIN  
**DRAWING NAME:** ONE-WAY SYSTEM TTM LAYOUT  
**STAGE:** CONSTRUCTION

**DWG. No.:** JC 6484-00-29  
**Rev. No.:** 0

**Rev. No.:** Revision Details  
**Rev. Date:** Designed: Drawn: Verified: Approved:

Copyright Notes:  
THIS DRAWING IS THE PROPERTY OF GARY KEVILLE TRAFFIC MANAGEMENT. THE DESIGN INFORMATION CONTAINED HEREIN IS STRICTLY CONFIDENTIAL. THIS DOCUMENT IS NOT TO BE REPRODUCED, DISCLOSED OR CIRCULATED IN WHOLE OR IN PART WITHOUT THE PRIOR WRITTEN CONSENT IN EACH INSTANCE OF GARY KEVILLE TRAFFIC MANAGEMENT. © GKTU 2025