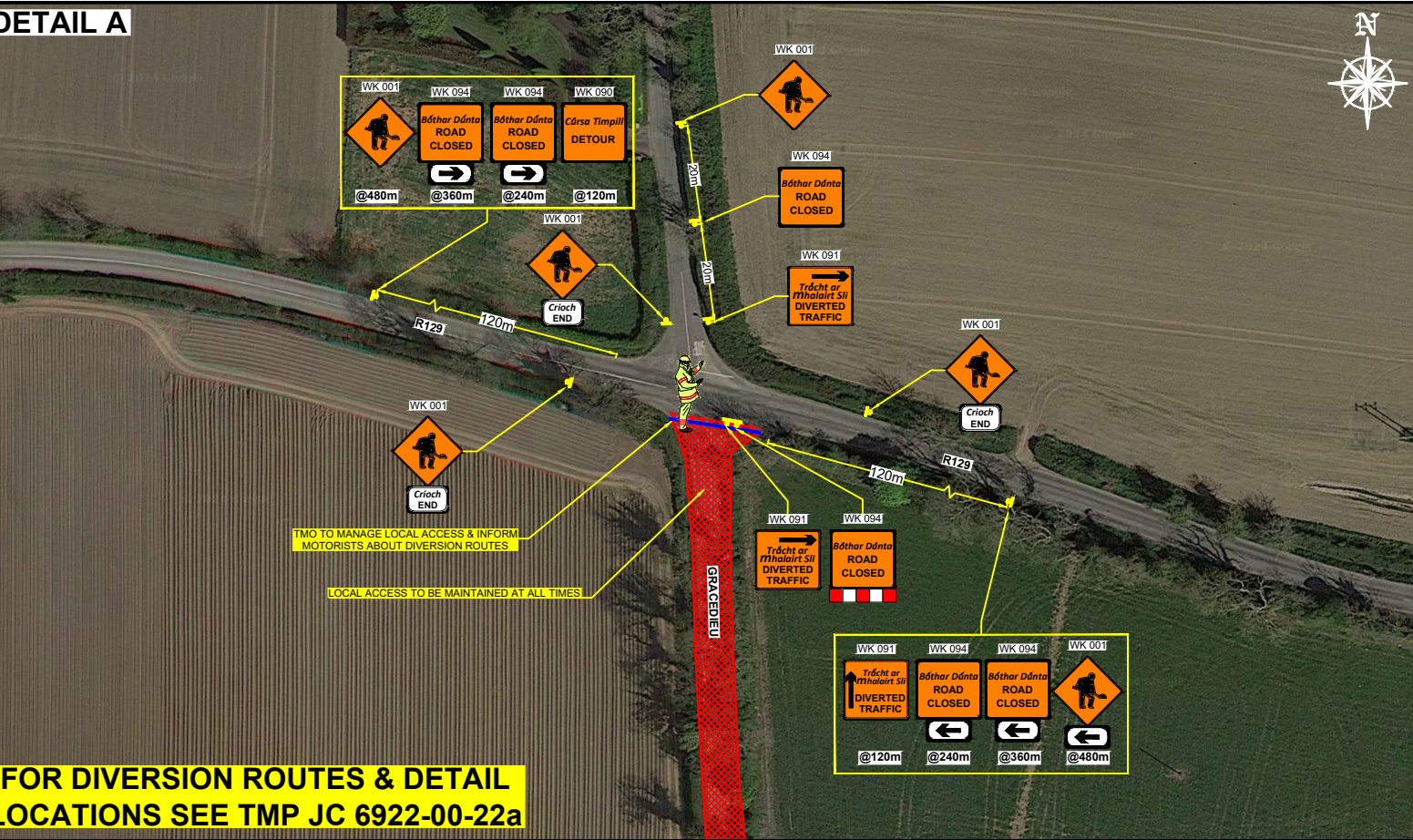


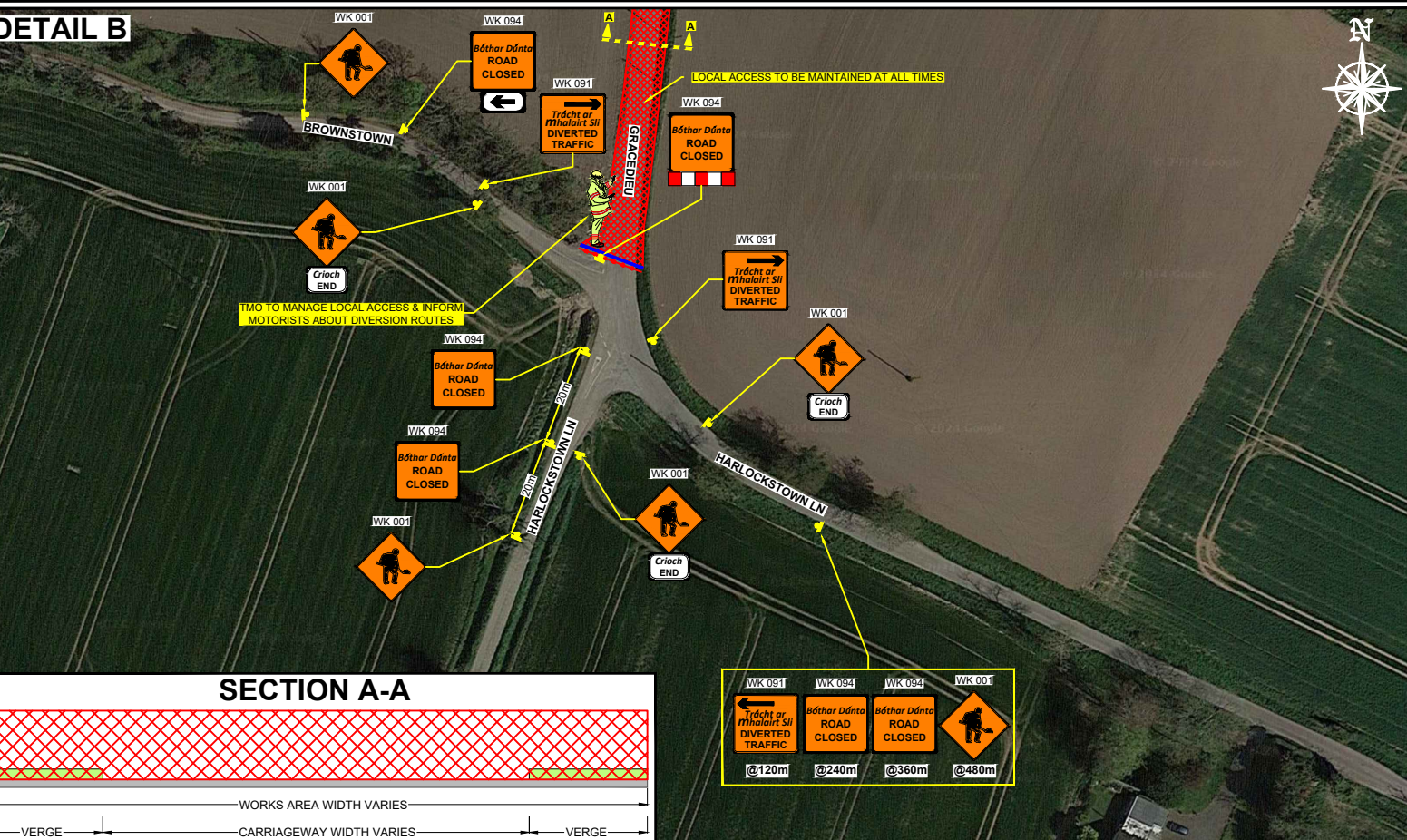
HARLOCKSTOWN LANE, SWORDS, DUBLIN - ROAD CLOSURE TM LAYOUT 2

DETAIL A

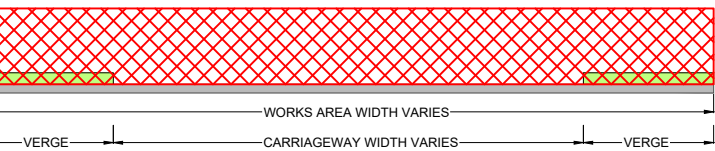


FOR DIVERSION ROUTES & DETAIL LOCATIONS SEE TMP JC 6922-00-22a

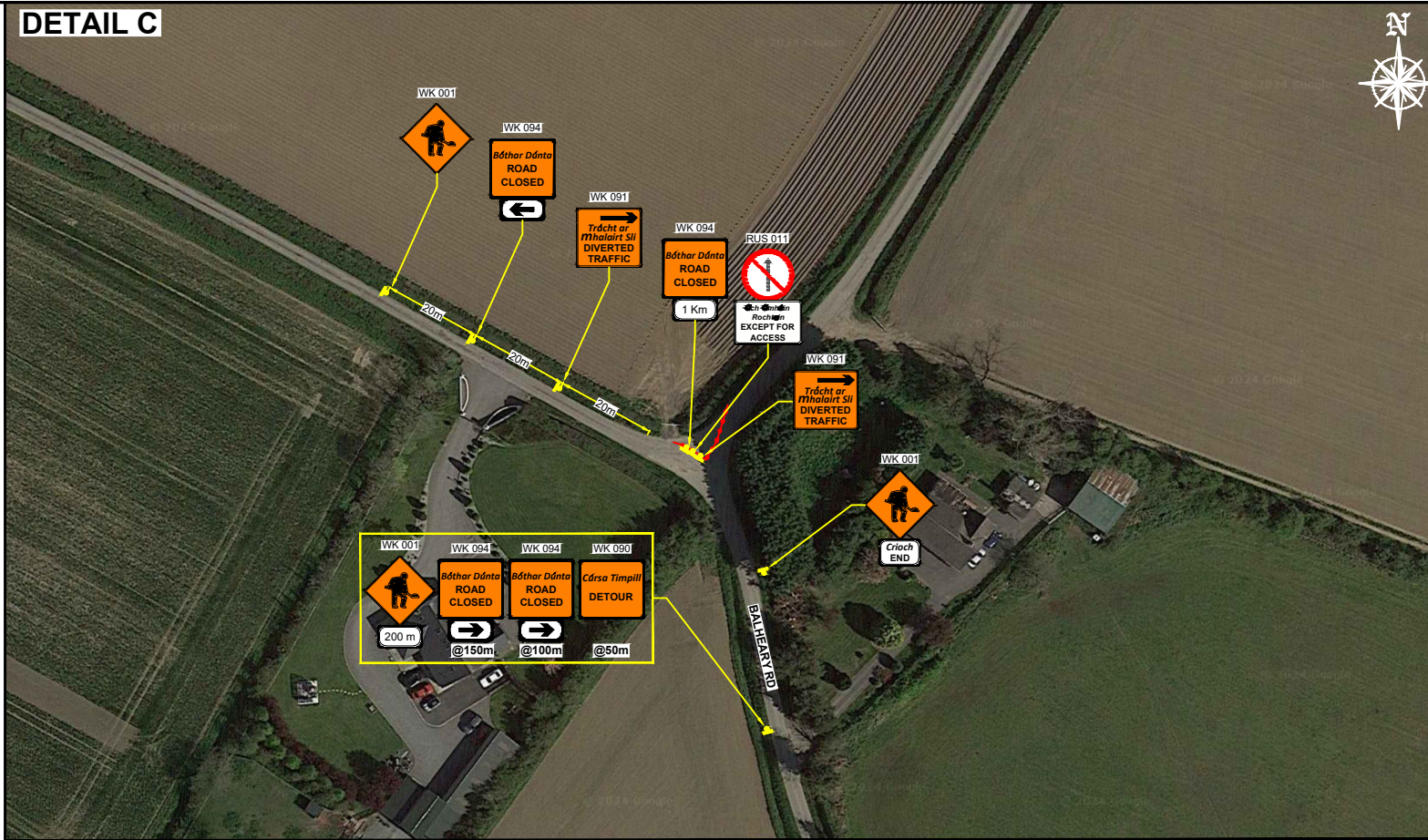
DETAIL B



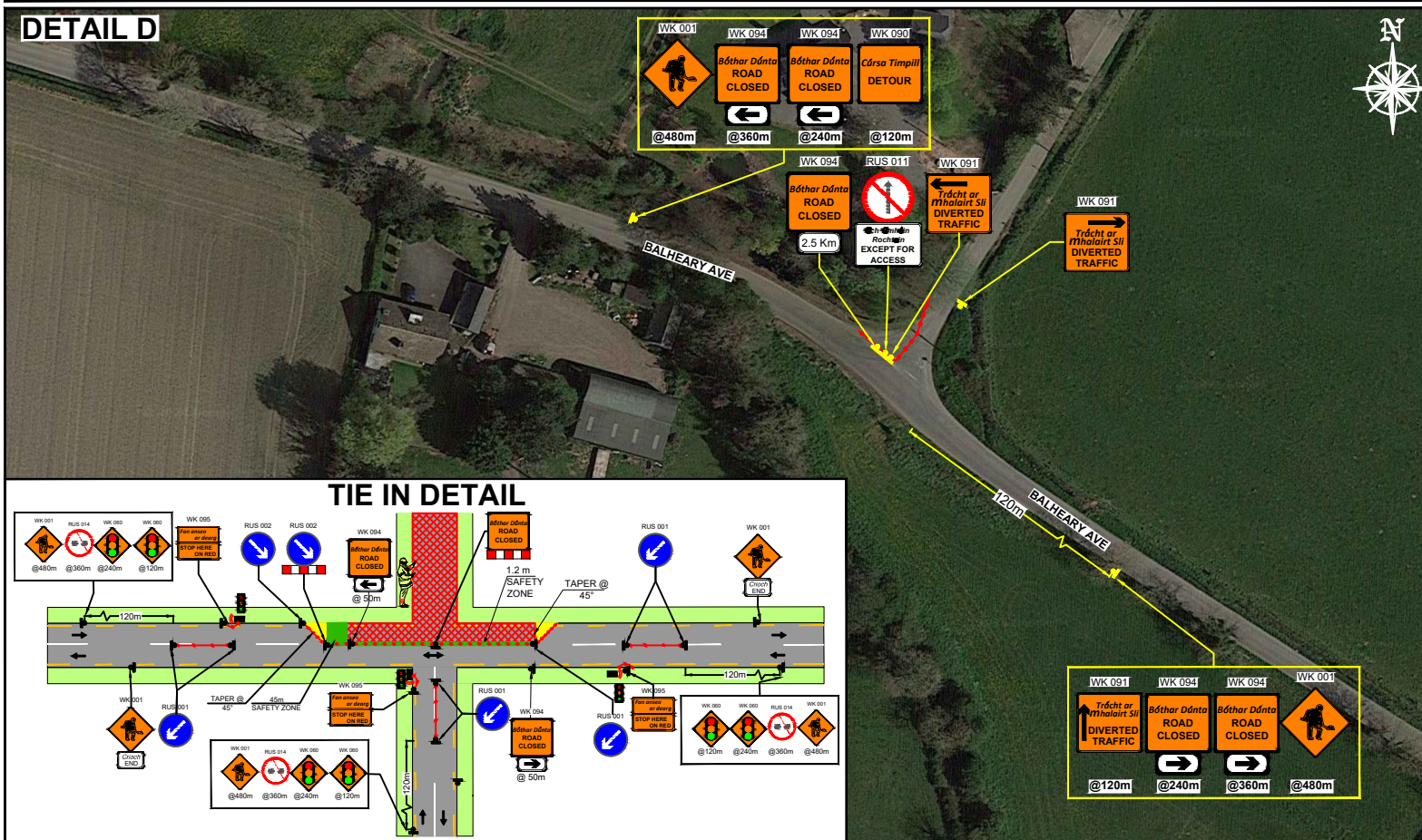
SECTION A-A



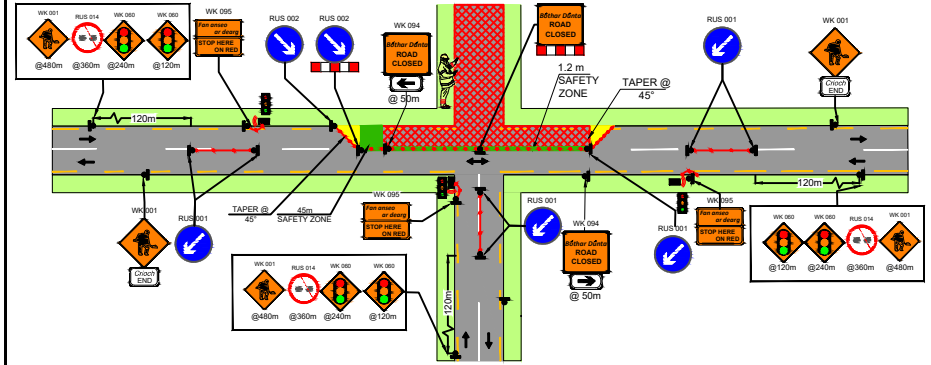
DETAIL C



DETAIL D



TIE IN DETAIL



DESIGN PARAMETERS				SAFETY ZONE			TEMPORARY SIGNS				CONE SPACING AND SIZE			RATE OF TAPER		LAMP SPACING		TRAFFIC MANAGEMENT SYSTEM		
Road (Sub)	Roadworks Type	Speed Limit (km/h)	Min. Lane Width (m)	Longitudinal (m)	Lateral (m)	Set Back (m)	Distance (m)	Number	Min. Size (mm)	Sign Visibility (m)	Longitudinal (m)	At Tapers (m)	Min. Height (mm)	Taper at H/ S (m)	Taper at Lane (m)	At Tapers (m)	Longitudinal (m)	Method	Coned Area Length (m)	Max. Traffic Flow (veh/h)
1 (iv)	A	60	3.00	15	0.5	-	20	3	600	60	6	1	750	45°	45°	6	12	Road Closure	n/a	n/a
2 (i)	A	80	3.00	45	1.2	-	120	4	600	90	12	3	750	45°	45°	6	24	Road Closure	n/a	n/a

- 1) ALL INFORMATION CONTAINED IN THIS DRAWING SHOULD BE CHECKED AND VERIFIED BY CONTRACTOR PRIOR TO ANY STAGE OF CONSTRUCTION.

2) ALL WORKS ARE TO BE CARRIED OUT IN ACCORDANCE WITH LOCAL AUTHORITY REQUIREMENTS AND ARE TO BE INCLUDED IN THE SITE-SPECIFIC SAFETY & HEALTH PLAN.

3) CONTRACTOR TO CARRY OUT A SITE RISK ASSESSMENT PRIOR TO THE INSTALLATION OF ANY TRAFFIC MANAGEMENT PLAN TO ENSURE THAT CONDITIONS REFLECT THOSE CONSIDERED FOR DESIGN POST SUBMISSION.
- 4) CONTRACTOR SHALL BE RESPONSIBLE FOR THE PROVISION OF RAMP ACCESS AT ANY CHANGE IN ROAD SURFACE LEVEL WHERE TRAFFIC RUNS ON A TEMPORARY SURFACE.

5) THIS TRAFFIC MANAGEMENT PLAN MAY ONLY BE IMPLEMENTED BY A TTOS WHO MUST CARRY OUT A RISK ASSESSMENT BEFORE IMPLEMENTATION. TTOS MUST BE IN POSSESSION OF CSCS CARD 'SIGNING, LIGHTING AND GUARDING AT ROAD WORKS' CONSTRUCTION REGULATIONS 2006.

6) EXACT SIGNS POSITIONS TO BE AGREED ON SITE.

7) ACCESS TO BE MAINTAINED TO ALL DWELLINGS / BUSINESSES AT ALL TIMES.
- 8) SITE INSPECTIONS AND MAINTENANCE OF THE TRAFFIC MANAGEMENT LAYOUT IS TO BE CONDUCTED ON A DAILY BASIS TO ENSURE THE SAFETY AND INTEGRITY OF THE DESIGN.

9) ALL TEMPORARY FOOTWAYS MUST HAVE A GOOD QUALITY, EVEN SURFACE AND BE MAINTAINED FREE FROM OBSTRUCTION.

10) WHERE A SITE-SPECIFIC SURVEY HAS NOT BEEN CARRIED OUT BY GKTM LTD., THE COMPANY DOES NOT ACCEPT THE APPOINTMENT AS TM DESIGNER FOR THE PROJECT. ANY TTMLD PRODUCED BY GKTM LTD. IS FOR THE PRELIMINARY SAFETY PLAN ONLY AND MUST BE FURTHER DEVELOPED BY A TM DESIGNER APPOINTED BY THE MAIN CONTRACTOR FOR THE CONSTRUCTION PHASE.
- 11) PEDESTRIANS TO BE PROTECTED FROM WORKS AREA BY PEDESTRIAN BARRIER SYSTEM.

12) TM OPERATIVES TO MAINTAIN CLOSURE, MARSHAL PEDESTRIANS AND INFORM DRIVERS ABOUT DIVERSION ROUTES.

13) DUE TO RISK ASSESSMENT & ROAD GEOMETRY THE DISTANCE BETWEEN THE ADVANCE WARNING SIGNS AT THE STOP LINE MARKINGS HAVE BEEN REDUCED TO 20m APART AS PER ROAD LEVEL 10(v) 60km/h.

14) LOCALS TO BE INFORMED BEFORE WORKS COMMENCE.

LEGEND

- TRAFFIC CONES
- SIGN LOCATION
- WORKS AREA
- SAFETY ZONE
- PEDESTRIAN BARRIER
- PEDESTRIAN ROUTE

GARY KEVILLE TRAFFIC MANAGEMENT LTD.
Rosemount Business Park, Dublin 11, Co. Dublin, Ireland
Tel: (+3531) 667 4322; Email: info@gktm.ie
Visit us at: www.gktm.ie

CLIENT: **SUIR ENGINEERING**

DESIGNED: SS **SCALE:** NTS
DRAWN: SS
VERIFIED: AZ **DATE:** 14-01-2025
APPROVED: AZ

PROJECT TITLE: HARLOCKSTOWN LANE, SWORDS, DUBLIN
DRAWING NAME: ROAD CLOSURE TM LAYOUT 2
STAGE: CONSTRUCTION

DWG. No.: JC 6922-00-22 **REV:** 0

Rev. No.: **Revision Details** **Rev. Date:** **Designed:** **Drawn:** **Verified:** **Approved:**

Copyright Notes:
THIS DRAWING IS THE PROPERTY OF GARY KEVILLE TRAFFIC MANAGEMENT.
THE DESIGN INFORMATION CONTAINED HEREIN IS STRICTLY CONFIDENTIAL.
THIS DOCUMENT IS NOT TO BE USED, REPRODUCED, DISCLOSED OR CIRCULATED IN WHOLE OR IN PART WITHOUT THE PRIOR WRITTEN CONSENT IN EACH INSTANCE OF GARY KEVILLE TRAFFIC MANAGEMENT.
© GKTM 2025