

Zoning Objectives

FP - Food Park	Provide for and facilitate the development of a Food Industry Park
GB - Greenbelt	Protect and provide for a Greenbelt
GE - General Employment	Provide opportunities for general enterprise and employment
HA - High Amenity	Protect and enhance high amenity areas
OS - Open Space	Preserve and provide for open space and recreational amenities
RB - Rural Business	Provide for and facilitate rural-related business which has a demonstrated need for a rural location
RC - Rural Cluster	Provide for small scale hill development serving local needs while maintaining the rural nature of the cluster
RU - Rural	Protect and promote in a balanced way, the development of agriculture and rural-related enterprise, biodiversity, the rural landscape, and the built and cultural heritage
RV - Rural Village	Protect and promote the character of the Rural Village and promote a vibrant community, in accordance with an approved land use plan, and the availability of physical and community infrastructure

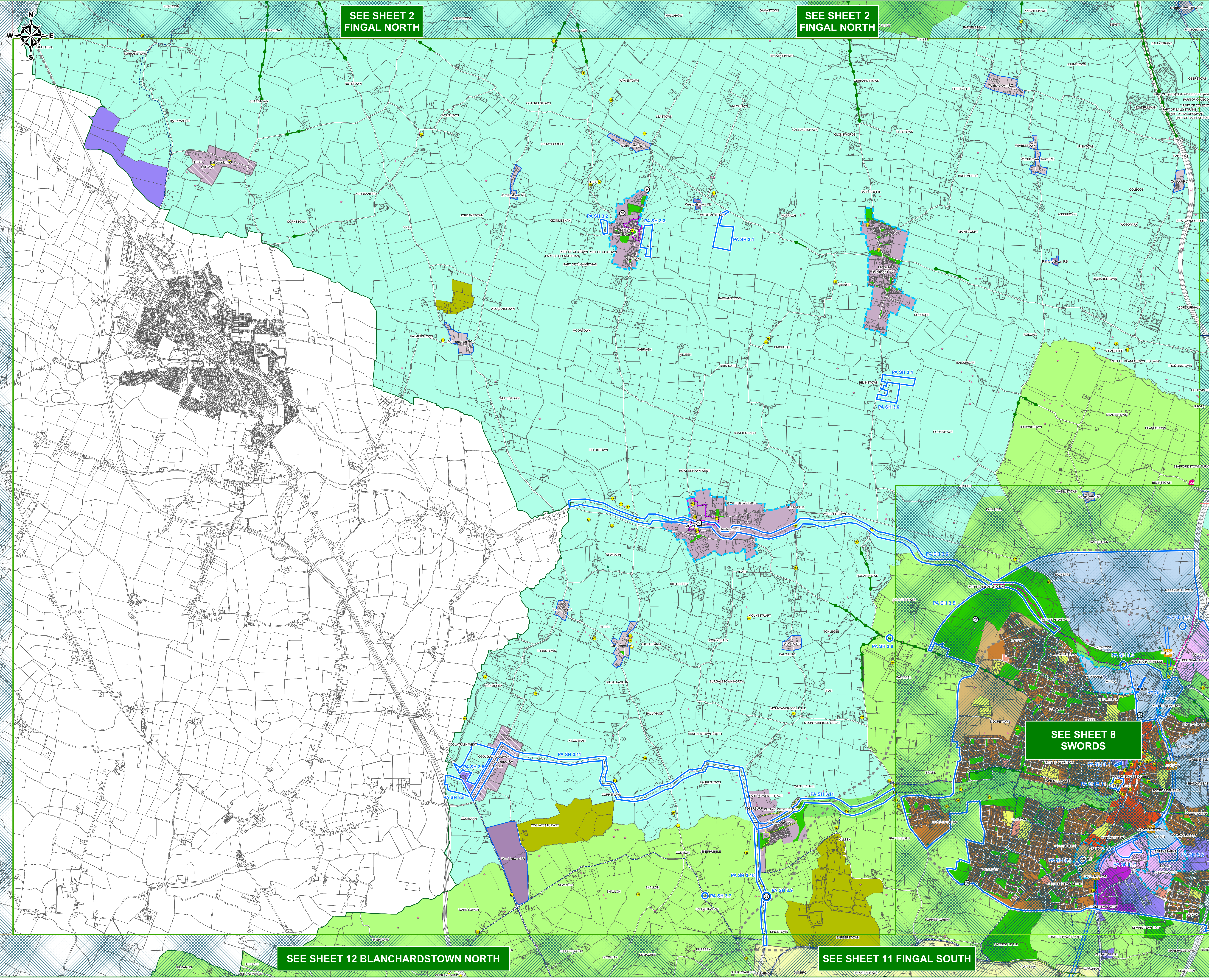
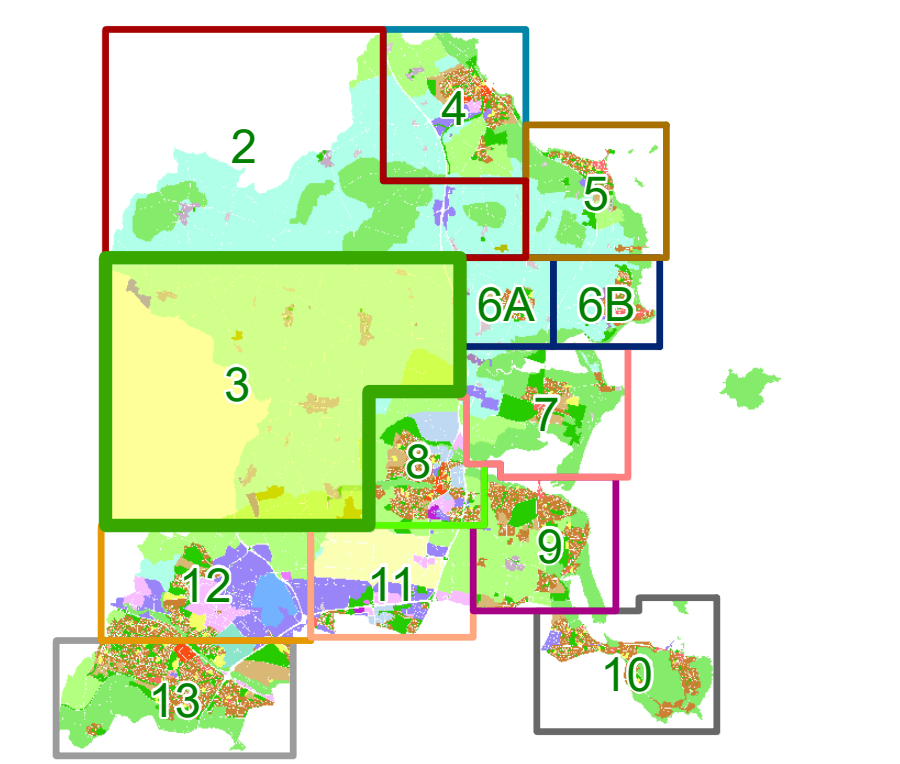
Specific Objectives

County Boundary	
Architectural Conservation Area	
Burial Site	
Masterplan Area	
Inner Public Safety Zone	
Outer Public Safety Zone	
Dublin Airport Noise Zone A	
Dublin Airport Noise Zone B	
Dublin Airport Noise Zone C	
LAP 3.A	Local Area Plan
Preserve Views	
Road Proposal	
Draft Greater Dublin Area (GDA) Cycle Network Plan	
Indicative LAP Walking/Cycle Routes	
Local Objective Points	
Protected Structures	
Sites and Monuments Record (SMR)	
Protect & Preserve Trees, Woodlands and Hedgerows	
Traveler Accommodation	

PA SH 3.1 Proposed Amendment

Note: For further detail please refer to the Draft Written Statement, Draft Written Statement Appendices and the Proposed Material Alterations to the Draft Development Plan 2023 - 2029 Documents.
The GDA cycle networks are an extract from: <https://www.nationaltransport.ie/planning-and-investment/transport-investment/greater-dublin-area-cycle-network-plan/> (Please see this website for further information)
To view details of Sites and Monuments Record see: <https://maps.archaeology.ie/HistoricEnvironment/>

Sheet Index Map



SEE SHEET 2 FINGAL NORTH

SEE SHEET 2 FINGAL NORTH

SEE SHEET 8 SWORDS

SEE SHEET 12 BLANCHARDSTOWN NORTH

SEE SHEET 11 FINGAL SOUTH