

Zoning Objectives

FP - Food Park	Provide for and facilitate the development of a Food Industry Park
GB - Greenbelt	Protect and provide for a Greenbelt
GE - General Employment	Provide opportunities for general enterprise and employment
HA - High Amenity	Protect and enhance high amenity areas
OS - Open Space	Preserve and provide for open space and recreational amenities
RB - Rural Business	Provide for and facilitate rural-related business which has a demonstrated need for a rural location
RC - Rural Cluster	Provide for small scale infill development serving local needs while maintaining the rural nature of the cluster
RU - Rural	Protect and promote in a balanced way, the development of agriculture and rural-related enterprise, biodiversity, the rural landscape, and the built and cultural heritage
RV - Rural Village	Protect and promote the character of the Rural Village and provide a vibrant community, in accordance with an approved land use plan, and the availability of physical and community infrastructure

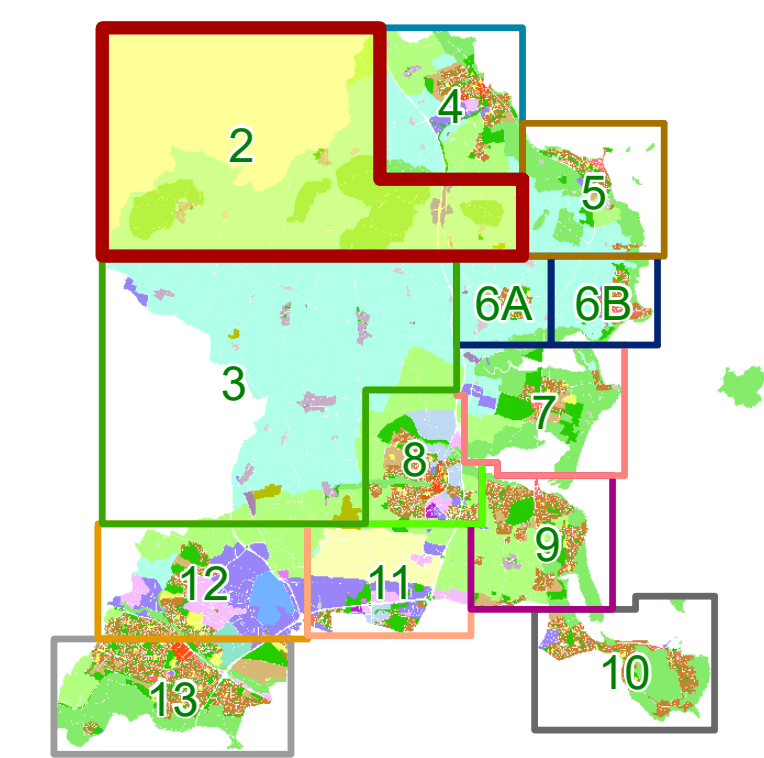
Specific Objectives

	County Boundary
	Architectural Conservation Area
	Bural Site
	Master Plan
	Study Area
	Preserve Views
	Road Proposal
	Draft Greater Dublin Area (GDA) Cycle Network Plan
	Local Objective Points
	Protected Structures
	Sites and Monuments Record (SMR)

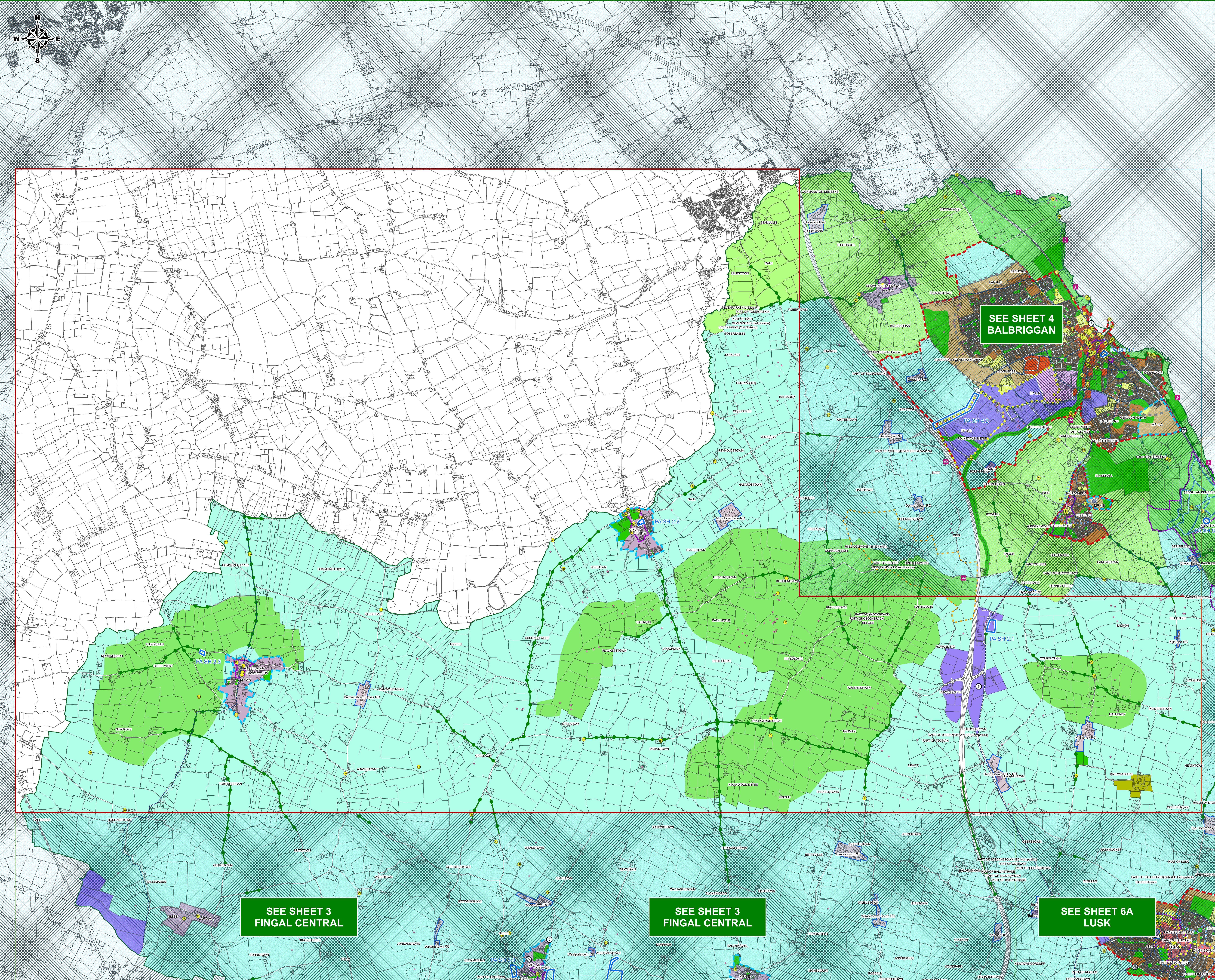
Proposed Amendment

Note: For further detail please refer to the Draft Written Statement, Draft Written Statement Appendices and the Proposed Material Alterations to the Draft Development Plan 2023 - 2029 Documents. The GDA cycle networks are an extract from: <https://www.nationaltransport.ie/planning-and-investment/transport-investment/greater-dublin-area-cycle-network-plan/> (Please see this website for further information). To view details of Sites and Monuments Record see: <https://maps.archaeology.ie/HistoricEnvironment/>

Sheet Index Map



FINGAL DEVELOPMENT PLAN 2023-2029



SEE SHEET 4
BALBRIGGAN

SEE SHEET 3
FINGAL CENTRAL

SEE SHEET 3
FINGAL CENTRAL

SEE SHEET 6A
LUSK