

Zoning Objectives

- County Boundary
- Architectural Conservation Area (ACA)
- Highly Sensitive Landscape
- Beach
- County Geological Heritage Site
- Historic Landscape Characterisation (HLC) Area
- Open Space
- Liffey Valley & Howth SAO (Special Amenity Area Order)
- Howth SAA (Special Amenity Area) Buffer Zone
- Preserve Views
- Historic Graveyard
- Protected Structures
- Sites and Monuments Record (SMR)

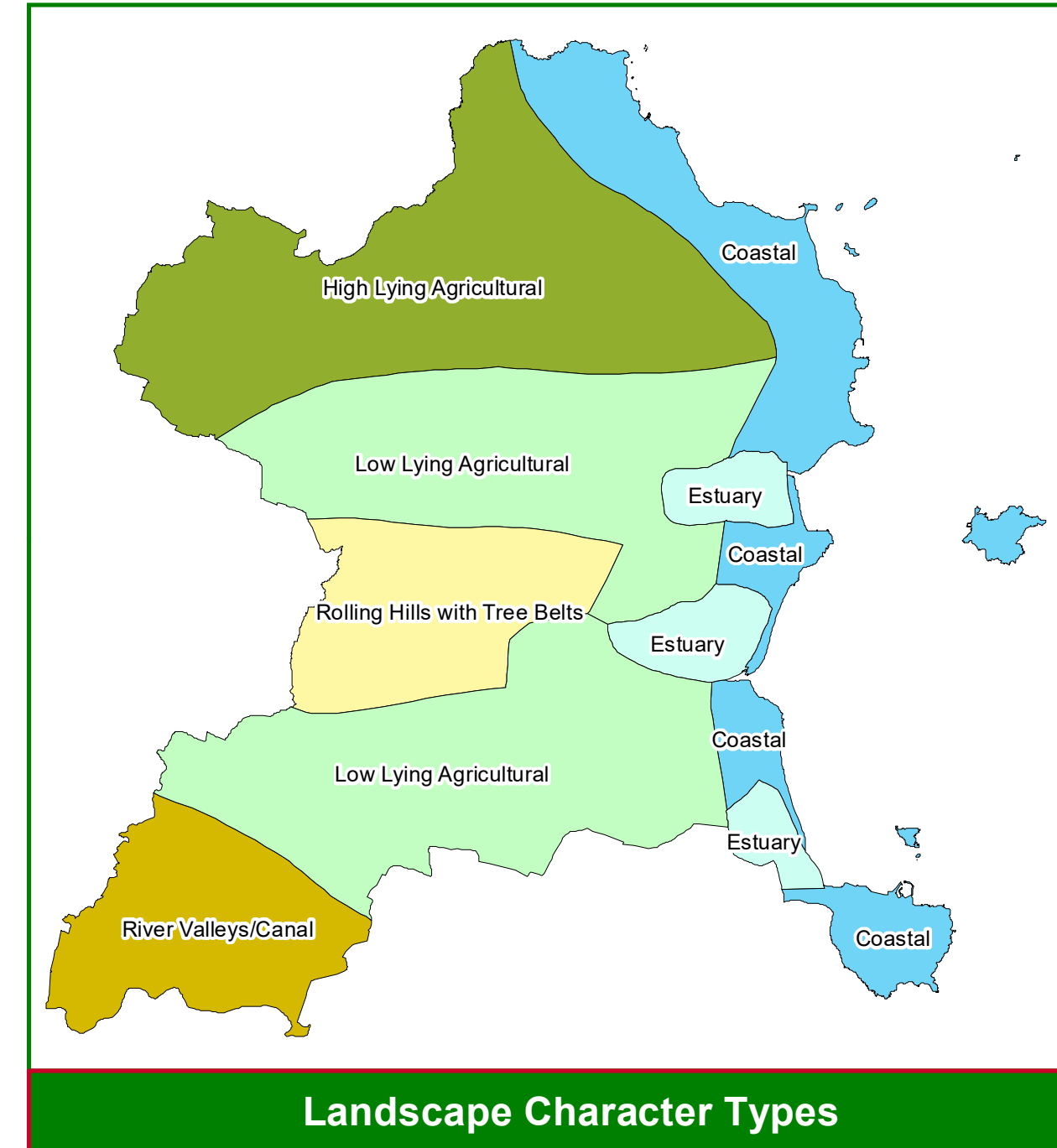
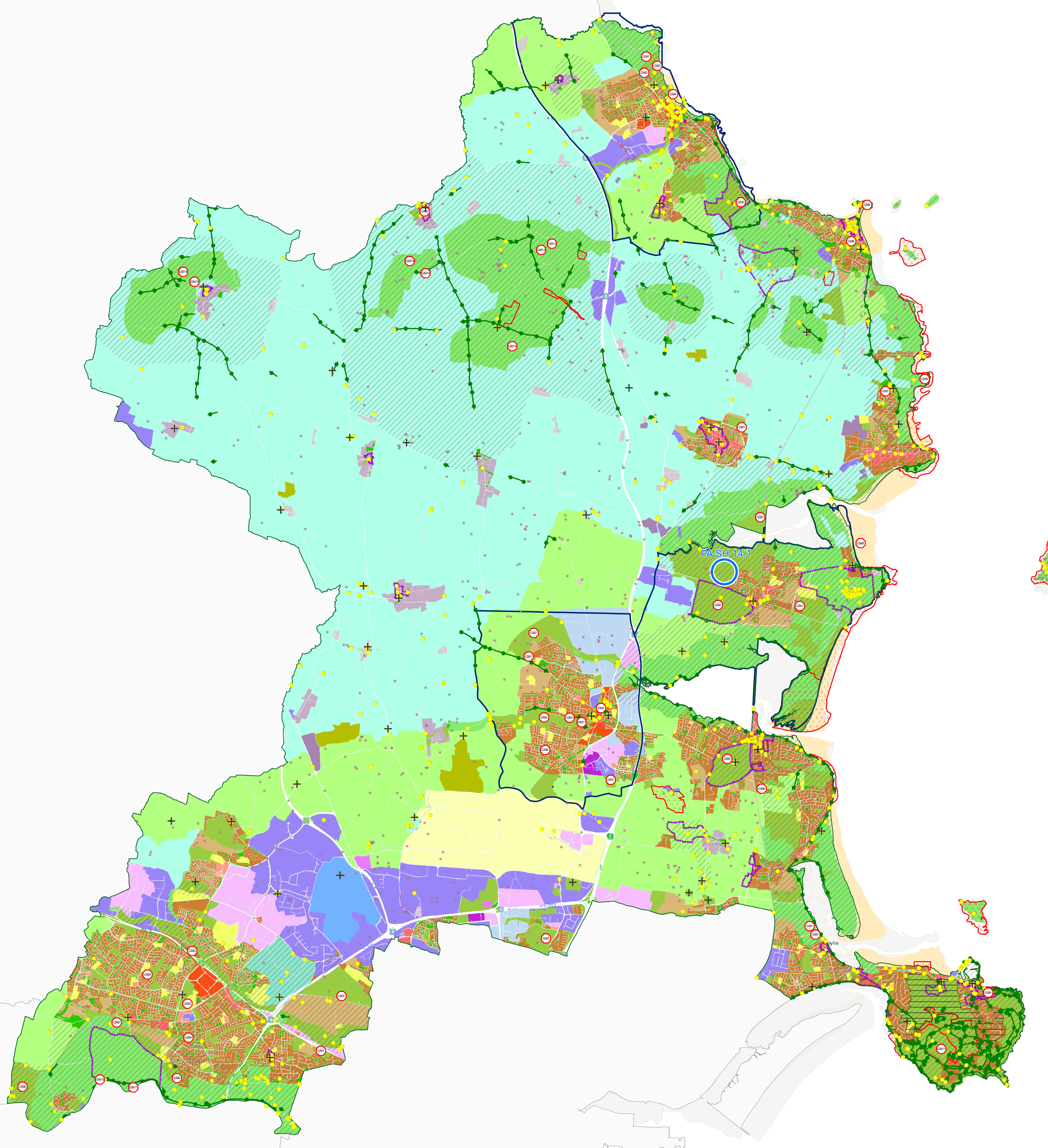
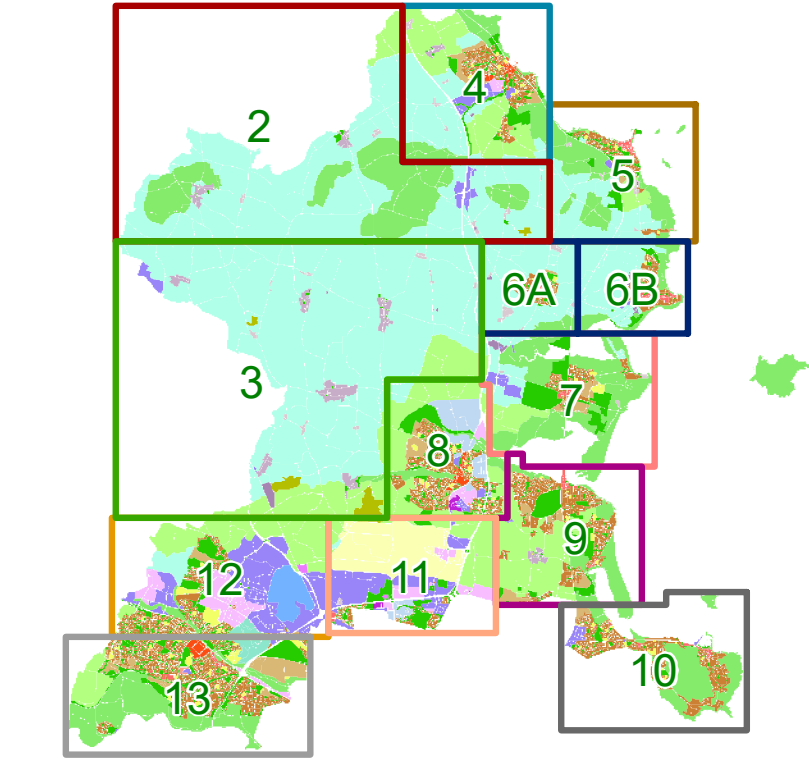
Green Infrastructure Mapped Objectives

- Provide new Active Recreation Hubs in Bremore Regional Park, St. Catherine's Park (Rush), Lusk, Donabate, Moorestown/Oldtown (Swords), Drinan, Baldoye Racecourse Park and Phoenix Park Racecourse.
- Protect the natural and built heritage of the following Fingal County Council owned lands (which include important historic sites, landscapes and gardens), while providing significant public amenities: Bremore Castle and Park, Ardglan Castle and Demesne, Newbridge House and Demesne, Malahide Castle and Demesne, Swords Castle and Park, Sanny Demesne, Beechpark (Clonsilla) and Ward River Valley Regional Park, Swords.
- Upgrade and enhance Bremore Regional Park, Ward Valley Park, Toka Valley Park and Millennium Park, Blanchardstown.
- Encourage appropriate maintenance and conservation of Howth, Ballyroan, Drumamagh and Skerries Maritime Towers which are in the Council's ownership.
- Maintain and develop the Seamus Emlis Arts Centre as a significant traditional arts venue.
- Upgrade existing Active Recreation Hubs in Skerries, Ridgewood (Swords), Broomfield (Malinbeg), Haristown, Portlerrstown and St. Catherine's Park (Liffey Valley).
- Provide new Regional Parks at the following locations: Ballyaly Lane, Moorestown/Oldtown (Swords), Baldoye, and Dunink subject to Appropriate Assessment screening.
- Establish a coastal monitoring programme on an ongoing basis to provide information on coastal erosion on an ongoing basis.
- Seek the development of the Royal Canal as a significant public amenity while protecting its natural and built heritage.
- Develop Anna Liffey Mills as a significant public amenity within the Liffey Valley while protecting its architectural and industrial heritage values.
- Implement the Management Plans for the Howth and Liffey Valley Special Amenity Areas and review them as necessary in consultation with all relevant stakeholders.
- Protect views of the Fingal Uplands area both from within the upland area and distant views towards the upland area of the Naul Hills.
- Encourage the planting and retention of hedgerows, trees and small woodland groups in the upland area of the Naul Hills.
- Protect views from within the Fingal Uplands area and also to protect views of this upland area from outside the area.
- Encourage the planting and retention of hedgerows, trees and small woodland groups where appropriate.
- Protect views from within the Fingal Uplands area and protect views of this upland area from outside the area.
- Develop a 'green necklace' of open spaces which are linked to each other and to the existing town centre of Swords, and to new development areas, promoting enhanced physical and visual connections to the Ward River Valley Regional Park and the Broadmeadow River Valley Park from within the development boundary of Swords. Develop an appropriate entrance to the Ward River Valley and provide for a comprehensive network of pedestrian and cycle ways, linking housing to commercial areas, to the town centre and to MetroLink stops and linking the three water bodies (the Ward River Valley, the Broadmeadow River Valley and the Estuary) to each other and prepare a Landscape and Recreation Strategy for the Ward River Valley.

Proposed Amendment

Note: For further detail please refer to the Draft Written Statement, Draft Written Statement Appendices and the Proposed Material Alterations to the Draft Fingal Development Plan 2023 - 2029 Documents. To view details of Sites and Monuments Record see: <https://maps.archaeology.ie/HistoricEnvironment/>

Sheet Index Map



Landscape Character Types