

**Zoning Objectives**

CI - Community Infrastructure	Provide for and protect civic, religious, community, education, health care and social infrastructure
GE - General Employment	Provide opportunities for general enterprise and employment
HA - High Amenity	Protect and enhance high amenity areas
LC - Local Centre	Protect, provide for and/or improve local centre facilities
OS - Open Space	Preserve and provide for open space and recreational amenities
RA - Residential Area	Provide for new residential communities subject to the provision of the necessary social and physical infrastructure
RS - Residential	Provide for residential development and protect and improve residential amenity
TC - Town and District Centre	Protect and enhance the special physical and social character of town and district centres and provide and/or improve urban facilities

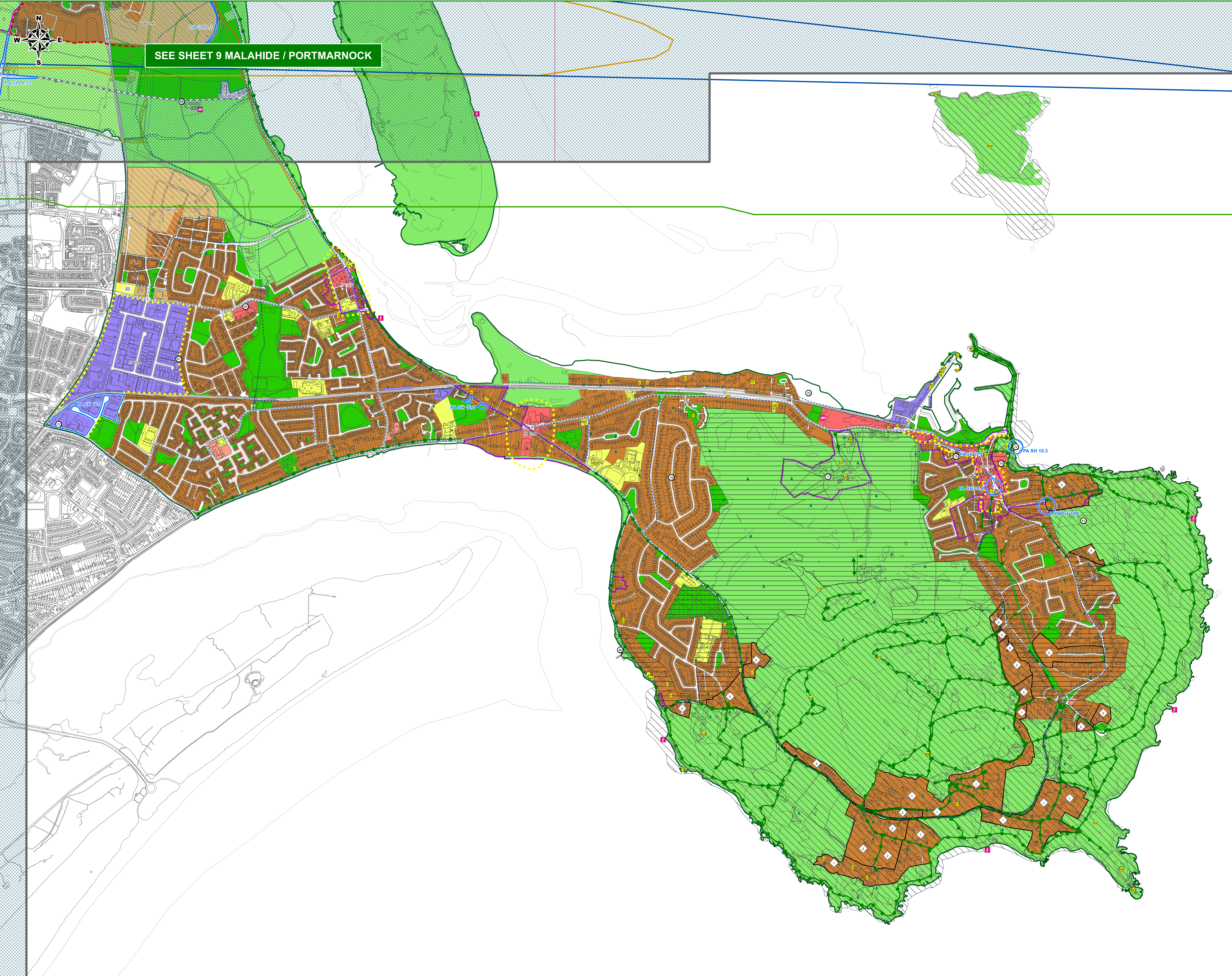
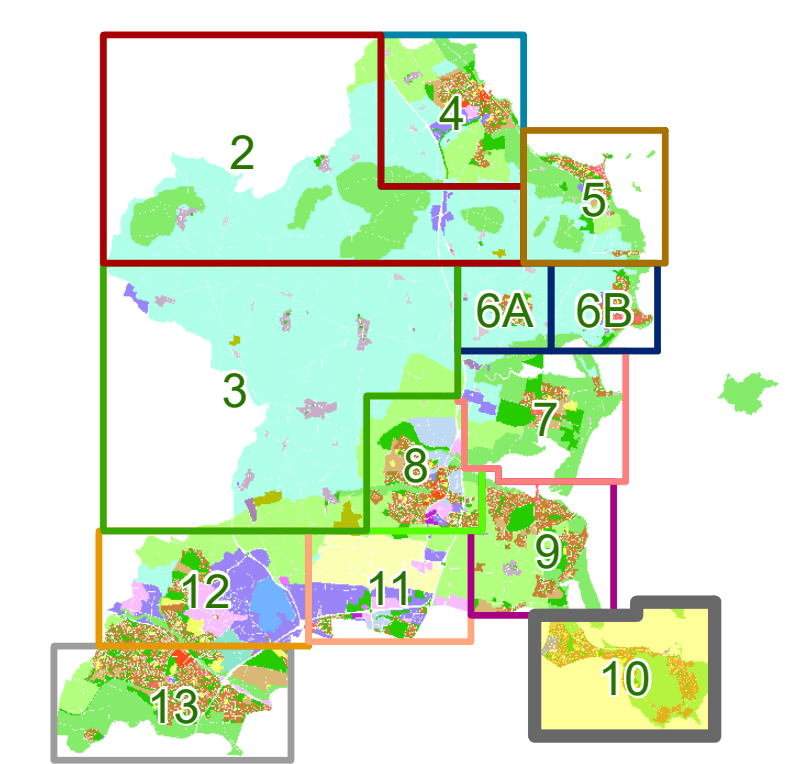
**IPA SH 10.2** Proposed Amendment

**Specific Objectives**

County Boundary	
Architectural Conservation Area	
Burial Site	
Density Boundary	
Howth SAA (Special Amenity Area) Buffer Zone	
Howth SAAD (Special Amenity Area Order)	
LAP 10.A Subject to Local Area Plan	
Airport Noise Zone C	
Outer Public Safety Zone	
Framework Plan	
Public Rights of Way	
Indicative Greenway	
Preserve Views	
Draft Greater Dublin Area (GDA) Cycle Network Plan	
Indicative LAP Walking/Cycle Routes	
Local Objective Points	
Protected Structures	
Sites and Monuments Record (SMR)	
Coastal Walk	
Provide for residential development at a density per hectare as shown	
Provide for a Local Centre	
Proposed School	
Traveler Accommodation	
Protect & Preserve Trees, Woodlands and Hedgerows	

**Note:**  
For further detail please refer to the Draft Written Statement, Draft Written Statement Appendices and the Proposed Material Alterations to the Draft Fingal Development Plan 2023 - 2029 Documents  
The GDA cycle networks are an extract from: <https://www.nationaltransport.ie/planning-and-investment/transport-investment/greater-dublin-area-cycle-network-plan>  
To view details of Sites and Monuments Record see: <https://maps.archaeology.ie/History/Environment/>

**Sheet Index Map**



SEE SHEET 9 MALAHIDE / PORTMARNOCK