

Fingal Coastal Way

Comhairle Contae
Fhine Gall
Fingal County
Council



Public Consultation on the Emerging Preferred Route

This scheme will provide a pedestrian and cycle route from Newbridge House and Farm in Donabate to the county boundary north of Balbriggan, passing through Rush, Loughshinny and Skerries along the way. The proposed design is suitable for people of all ages and mobility levels and offers a safe route where the scenic coastline can be enjoyed as part of your commute, for leisure, exercise or to visit your local village.

Following a Feasibility & Constraints Assessment and a Route Options Public Consultation, the project team now presents the Emerging Preferred Route for Public Consultation. We want your feedback as we move towards preliminary design in 2023.

Why is this scheme needed?

The scheme will benefit the local community, businesses and the environment:

- Connects local communities;
- Provides attractive recreation space showcasing the natural beauty of the area;
- Creates safe routes to schools, shops, businesses, bus stops and train stations;
- Provides tourism amenity to benefit the local economy;
- Promotes positive climate and health options;

- Links to the wider pedestrian and cycle network.

How can I get involved?

Fingal County Council is inviting everyone to view and comment on the Emerging Preferred Route as part of a Public Consultation, taking place from 25 October to 05 December 2022.

Tell us what you think.

Make a submission online or by post.

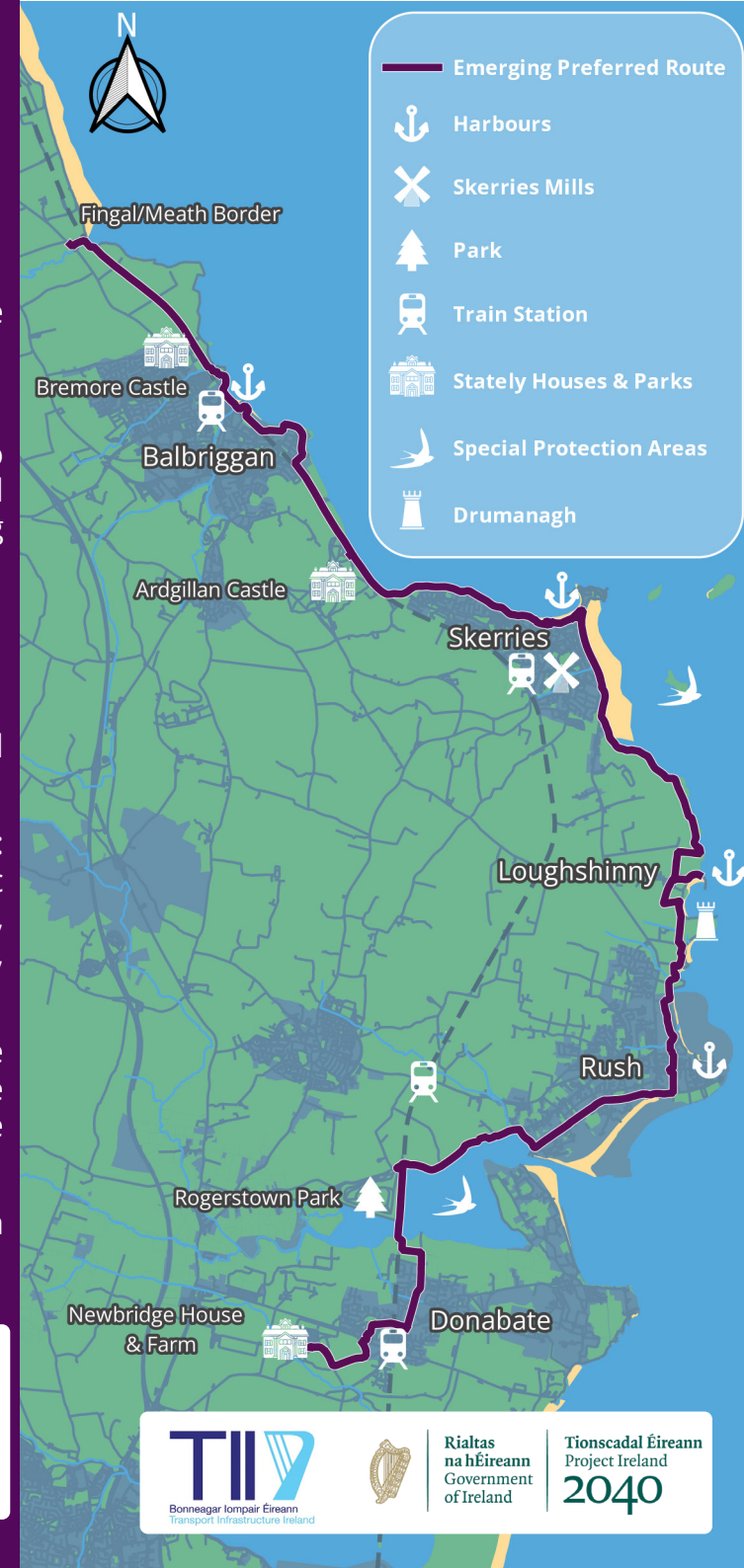
Visit <https://consult.fingal.ie> where you'll find our plans, drawings and a questionnaire.

Postal submissions should be addressed to: Senior Executive Officer, Planning & Strategic Infrastructure Dept, Fingal County Council, County Hall, Main Street, Swords, Co Dublin, K67 X8Y2.

When making a postal submission please make it clear that it is for the Fingal Coastal Way. State your name, address and where relevant, the body or organisation you represent.

Submissions must be received no later than 23.59hrs, 05 December 2022.

Scan this QR code with the camera on your mobile phone or visit fingal.ie/fingal-coastal-way to find out more



TII
Bonneagar Iompair Éireann
Transport Infrastructure Ireland



Rialtas
na hÉireann
Government
of Ireland

Tionscadal Éireann
Project Ireland
2040

Bealach Cósta Fhine Gall

Comhairliúchán Poiblí ar an mBealach is Dealraithí

Cuirfidh an scéim seo bealach coisithe agus rothaíochtaarfáilóTheachagusFeirmanDroichid Nua i nDomhnach Bat go teorainn an chontae ó thuaidh de Bhaile Brigín, ag dul tríd an Ros, Loch Sionnaigh agus na Sceirí feadh an bhealaigh. Tá an dearadh molta oiriúnach do dhaoine de gach aois agus gach leibhéal soghluaisteachta agus cuireann sé bealach sábháilte ar fáil inar féidir taitneamh a bhaint as an gcósta álainn mar chuid de do chomaitéireacht, le haghaidh fóillíochta, aclaíochta nó le cuairt a thabhairt ar do shráidbhaile áitiúil.

Tar éis Measúnú Indéantachta agus Sriantachta agus Comhairliúcháin Phoiblí ar Roghanna Bealaigh, cuireann foireann an tionscadail an Bealach is Dealraithí le haghaidh Comhairliúcháin Phoiblí i láthair anois. Ba mhaith linn do chuid aiseolais a fháil agus muid ag leanúint ar aghaidh go dtí an réamhdhearadh i 2023.

Cén fáth a bhfuil gá leis an scéim seo?

Bainfidh an pobal áitiúil, gnóthaí agus an chomhshaoil leas as an scéim:

- Nascann sé pobail áitiúla;
- Cuireann sé spás tarraingteach caitheamh aimsire ar fáil a thaispeánann áilleacht nádúrtha an cheantair;
- Cruthaíonn sé bealaí sábháilte chuig scoileanna, siopaí, gnóthaí, stadanna bus agus stáisiúin traenach;
- Soláthraíonn sé taitneamhacht turasóireachta chun leasa an gheilleagair áitiúil;
- Cuireann sé roghanna dearfacha aeráide agus sláinte chun cinn;

- Nascann sé leis an ngréasán coisithe agus rothaíochta níos leithne.

Conas is féidir liom a bheith páirteach?

Tá Comhairle Contae Fhine Gall ag tabhairt cuireadh do gach duine an Bealach is Dealraithí a fheiceáil agus a gcuid tuairimí a nochtadh mar chuid de Chomhairliúchán Poiblí, a bheidh ar siúl ón 25 Deireadh Fómhair go dtí an 05 Nollaig 2022.

Roinn do thuairimí linn.

Déan aighneacht ar líne nó tríd an bpost.

Tabhair cuairt ar <https://consult.fingal.ie> áit a bhfaighidh tú ár bpleananna, líníochtaí agus ceistneoir.

Ba chóir aighneachtaí poist a sheoladh chuig: Oifigeach Sinsearach Feidhmiúcháin, An Roinn Pleanála & Bonneagair Straitéisigh, Comhairle Contae Fhine Gall, Áras an Chontae, An Phríomhshráid, Sord, Co. Bhaile Átha Cliath, K67 X8Y2.

Agus aighneacht poist á dhéanamh agat, bíodh sé soiléir le do thoil gur le Bealach Cósta Fhine Gall atá sé. Luaigh d'ainm, do sheoladh agus nuair is cuí, an comhlacht nó an eagraíocht a ndéanann tú ionadaíocht air.

Ní mór d'aighneachtaí a bheith isitgh faoi 23.59 uair, 05 Nollaig 2022.

Scan an cód QR seo leis an gceamara ar d'fhón póca nó tabhair cuairt ar fingal.ie/fingal-coastal-way chun tuilleadh eolas a fháil

