

Draft
Fingal Development Plan
2023 - 2029

MALAHIDE / PORTMARNOCK

Sheet No.9

Zoning Objectives

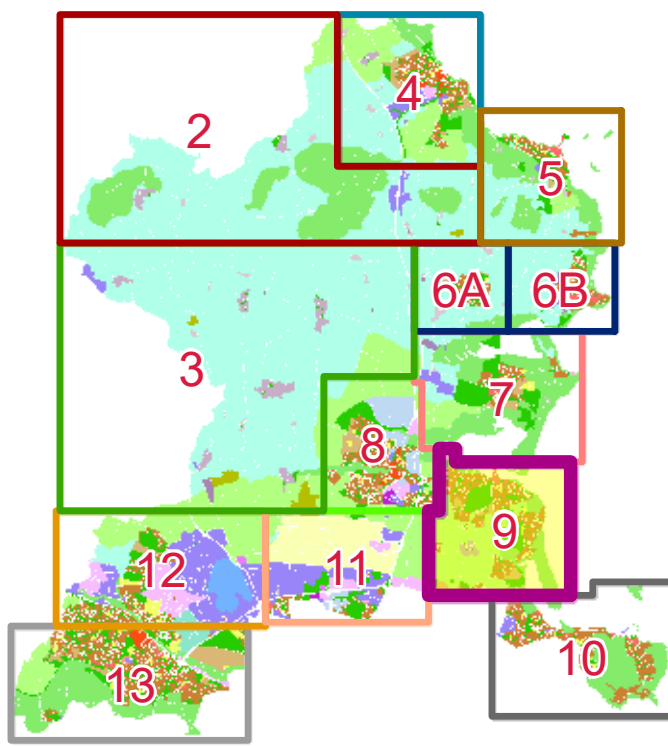
CI - Community Infrastructure	Provide for and protect civic, religious, community, education, health care and social infrastructure
GB - Greenbelt	Protect and provide for a Greenbelt
GE - General Employment	Provide opportunities for general enterprise and employment
HA - High Amenity	Protect and enhance high amenity areas
LC - Local Centre	Protect, provide for and/or improve local centre facilities
OS - Open Space	Preserve and provide for open space and recreational amenities
RA - Residential Area	Provide for new residential communities subject to the provision of the necessary social and physical infrastructure
RC - Rural Cluster	Provide for small scale infill development serving local needs while maintaining the rural nature of the cluster
RS - Residential	Provide for residential development and protect and improve residential amenity
RV - Rural Village	Protect and promote the character of the Rural Village and promote a vibrant community in accordance with an approved land use plan, and the availability of physical and community infrastructure
TC - Town and District Centre	Protect and enhance the special physical and social character of town and district centres and provide and/or improve urban facilities

Specific Objectives

	County Boundary
	Architectural Conservation Area
	Burial Site
	Development Boundary
	Framework Plan
	Subject to Local Area Plan
	Airport Noise Zone A
	Airport Noise Zone B
	Airport Noise Zone C
	Inner Public Safety Zone
	Outer Public Safety Zone
	Road Proposal
	Public Rights of Way
	To Preserve Views
	Greater Dublin Area (GDA) Cycle Network 2013
	Recreational Routes
	Indicative Greenway
	Indicative LAP Cycle Routes
	Sustrans 2009 Cycle Study Routes
	Local Objective Points
	Protected Structures
	Recorded Monuments
	Coastal Walk
	Traveller Accommodation
	Protect & Preserve Trees, Woodlands and Hedgerows

Note :
For further detail please refer to the Draft Written Statement, Draft Written Statement Appendices and the Green Infrastructure Maps
The GDA cycle networks are an extract from:
<https://www.nationaltransport.ie/gda/supporting-documents/>
(Please see this website for further information)
To view details of Sites and Monuments Record see:
<https://maps.archaeology.ie/HistoricEnvironment/>

Sheet Index Map



DRAFT
FINGAL DEVELOPMENT PLAN
2023-2029

Comhairle Contae Fhine Gaeil
Fingal County Council

An Roinn um Pleanáil agus
Infrastruchtúr Breathnach
Planning and Strategic
Infrastructure Department



Director of Services: Matthew McAleese
Senior Planner: Róisín Burke

Date: Feb 2022
Scale @ A0: 1:8,500

© Ordnance Survey Ireland. All rights reserved.
2022-03- NMA_G7

SEE SHEET 7 DONABATE / PORTRANE

SEE SHEET 8
SWORDS

SEE SHEET 11
FINGAL SOUTH

SEE SHEET 10 BALDOYLE / HOWTH

