

Zoning Objectives

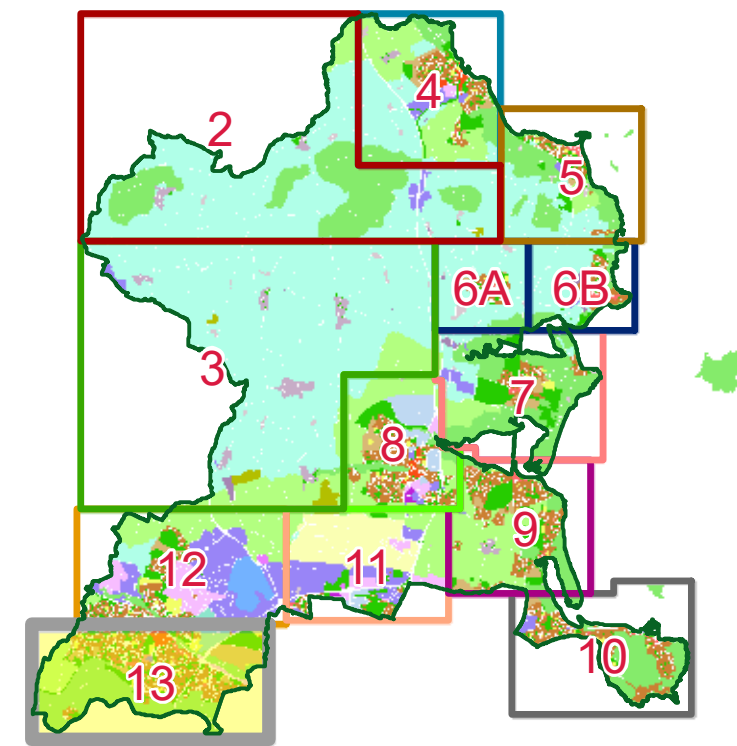
CI - Community Infrastructure	Provide for and protect civic, religious, community education, health care and social infrastructure
GB - Greenbelt	Protect and provide for a Greenbelt
GE - General Employment	Provide opportunities for general enterprise and employment
HA - High Amenity	Protect and enhance high amenity areas
HT - High Technology	Provide for office, research and development and high technology/high technology manufacturing type employment in a high quality built and landscaped environment
LC - Local Centre	Protect, provide for and/or improve local centre facilities
MC - Major Town Centre	Protect, provide for and/or improve major town centre facilities
OS - Open Space	Preserve and provide for open space and recreational amenities
RA - Residential Area	Provide for new residential communities subject to the provision of the necessary social and physical infrastructure
RS - Residential	Provide for residential development and protect and improve residential amenity
TC - Town and District Centre	Protect and enhance the special physical and social character of town and district centres and provide and/or improve urban facilities
NSC - National Sports Campus	Provide for and facilitate the development of a National Sports Campus

Specific Objectives

	County Boundary
	Architectural Conservation Area
	Development Boundary
	Subject to Local Area Plan
	Masterplan Area
	Long Term Strategic Reserve
	Liffey Valley SAO (Special Amenity Area Order)
	Strategic Development Zone - SDZ
	Framework Plan
	Recreational Route
	Light Rail Corridor
	Indicative Greenway
	Road Proposal
	Preserve Views
	Greater Dublin Area (GDA) Cycle Network 2013
	Indicative LAP Cycle Routes
	Local Objective Points
	Protected Structures
	Recorded Monuments
	Light Rail Stop
	Proposed School
	Traveler Accommodation
	Protect & Preserve Trees, Woodlands and Hedgerows

Note:
For further detail please refer to the Draft Written Statement, Draft Written Statement Appendices and the Green Infrastructure Maps.
The GDA cycle networks are an extract from:
<https://www.nationaltransport.ie/gia/supporting-documents/>
(Please see this website for further information)
To view details of Sites and Monuments Record see:
<https://maps.archaeology.ie/HistoricEnvironment/>

Sheet Index Map



SEE SHEET 12
BLANCHARDSTOWN NORTH

SEE SHEET 12
BLANCHARDSTOWN NORTH

See Insert A

See Insert B

