

Project: **A11267 DUBLIN AIRPORT**

File Ref: A11267_12_MO028_2.0

Date: 28 July 2021

Subject: **ANCA RFI Response 128**

1.0 INTRODUCTION

This memo addresses the Airport Noise Competent Authority (ANCA) Request For Information (RFI) number 128.

1.1 ANCA Request

RFI 128 is repeated below:

“It is noted that the application does not propose an equivalent to the current daytime voluntary purchase scheme. The Applicant is requested to demonstrate how the eligibility boundaries for the existing voluntary purchase scheme align with the night time noise exposure levels calculated for 2025 in Scenarios 2 to 9 as ANCA wishes to understand whether the existing voluntary purchase scheme remains adequate in the context of this Application and forecast night-time noise exposure from Dublin Airport.”

1.2 Response

Figure A11267_19_DR820_1.0 is appended. This figure includes the following features:

- Location of dwellings in the vicinity of Dublin Airport, highlighting those which are in the existing Voluntary Dwelling Purchase Scheme (VDPS)
- Boundary of existing VDPS
- Boundary of forecast VDPS based on the 2025 Proposed Scenario (69 dB $L_{Aeq,16h}$ contour)
- L_{night} noise contours for the 2025 Proposed Scenario, as previously presented in Figure A11267_19_DR496_1.0.

To supplement the attached figure, L_{night} noise levels are provided in Table 1 and Table 2 for selected dwellings for 2018, and for each of the 2025 Scenarios for which information was provided in the report A11267_19_RP035_4.0. Details of these scenarios are given in the referenced report. A summary is provided below:

- Scenario 01: Permitted Scenario
- Scenario 02: Proposed Scenario, i.e. no North Runway (NR) 0000-0600
- Scenario 03: Option 7B all night
- Scenario 04: Reverse Option 7B all night
- Scenario 05: Alternate Scenarios 03 and 04
- Scenario 06: Fully mixed mode all night
- Scenario 07: Departures mixed mode all night
- Scenario 08: Arrivals mixed mode all night
- Scenario 09: No South Runway (SR) 0000-0600
- Scenario 10: Alternate Scenarios 02 and 09
- Scenario 11: No NR all night
- Scenario 12: No NR 2300-0600
- Scenario 13: No NR 2330-0500

The dwellings selected are those in the existing VDPS (those shaded grey), and those exposed to the highest L_{night} levels in any scenario.

Table 1: L_{night} Noise Levels at Selected Dwellings, 2018 and 2025 Scenario 01 to 06

GeoDirectory Building ID	Noise Level, dB L _{night}						
	2018	SCEN 01	SCEN 02	SCEN 03	SCEN 04	SCEN 05	SCEN 06
27081562	47	46	53	53	63	61	61
27300843	51	49	54	55	53	54	54
27356691	50	49	54	55	53	55	55
35577736	48	46	58	61	55	59	59
35577737	50	48	55	57	54	56	56
35577740	50	49	54	56	54	55	55
35577749	50	49	54	56	54	55	55
35577752	50	49	54	56	53	55	55
35577753	51	50	56	58	56	57	57
35577758	52	50	56	57	55	56	57
35577759	51	50	57	59	57	58	58
35577761	51	49	58	60	57	58	59
35577769	50	49	57	59	56	58	58
35818685	47	46	53	53	60	58	58
36541043	48	47	58	61	55	59	59
37368278	51	50	58	59	57	58	58
38068168	50	49	57	59	56	58	58
38087348	61	59	61	61	50	58	58
40229177	49	45	62	63	63	63	63
40229178	49	45	61	63	63	63	62
50483795	49	45	61	63	63	63	63
50484066	60	59	59	58	59	59	59
50484322	62	60	62	62	53	60	60
50636615	65	64	64	64	63	63	63
50636616	65	64	64	64	62	63	63
50636617	64	63	63	63	62	62	62
50636618	64	63	63	63	61	62	62
50636619	63	62	62	62	61	61	62
50636628	67	65	66	65	64	65	65
50636629	67	66	66	65	64	65	65
50636635	63	61	61	60	61	60	60
50636636	63	62	61	60	61	61	61
80457733	59	58	59	54	60	58	58
80457792	59	58	59	54	60	58	58
80457889	61	59	59	57	60	59	59

GeoDirectory Building ID	Noise Level, dB L _{night}						
	2018	SCEN 01	SCEN 02	SCEN 03	SCEN 04	SCEN 05	SCEN 06
80457890	60	59	59	57	59	58	58
80457895	60	59	59	55	60	58	58
80457899	59	58	59	54	60	58	58
80457937	60	59	59	58	59	58	58
80458030	60	59	59	57	59	58	58
80463880	47	46	53	53	60	58	58
80463903	61	59	61	61	50	58	58
80463904	60	59	61	61	50	58	58
80463905	61	59	61	61	50	58	58
80464029	60	58	60	60	50	58	58
80464045	47	46	52	52	60	57	57
80464047	47	46	52	52	58	56	56
80464154	47	46	53	53	60	58	58
80464156	46	46	51	51	56	55	55
80467908	49	48	55	58	54	56	56
80467909	48	47	57	60	54	58	58
80467911	48	47	58	61	55	59	59
80467946	50	49	57	59	56	58	58
80468068	48	47	58	61	55	59	59
80468134	50	49	56	59	56	57	57
80984274	59	59	59	54	60	58	58
80984640	49	48	57	60	56	58	58

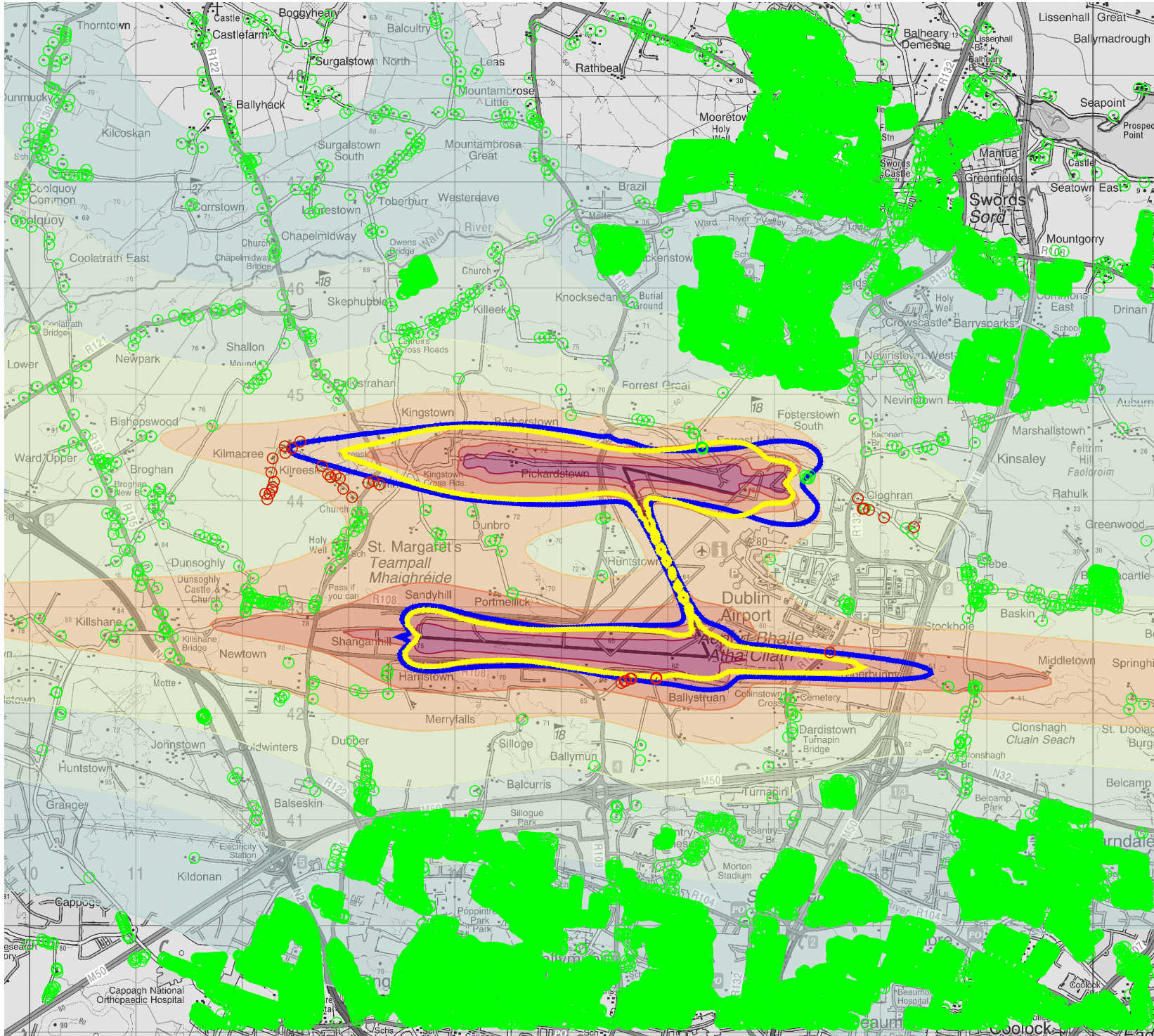
Table 2: L_{night} Noise Levels at Selected Dwellings, 2025 Scenario 07 to 13

GeoDirectory Building ID	Noise Level, dB L _{night}						
	SCEN 07	SCEN 08	SCEN 09	SCEN 10	SCEN 11	SCEN 12	SCEN 13
27081562	54	61	62	59	47	53	53
27300843	55	55	55	54	51	53	54
27356691	55	55	55	55	50	54	55
35577736	61	59	61	60	48	55	59
35577737	56	56	57	56	50	54	56
35577740	56	56	56	55	50	54	55
35577749	55	55	56	55	50	54	55
35577752	55	55	56	55	50	54	55
35577753	57	57	58	57	51	56	57
35577758	57	57	57	57	52	56	57
35577759	59	59	59	58	51	57	58
35577761	59	59	60	59	51	57	59
35577769	59	58	59	58	50	56	58
35818685	53	57	59	57	47	53	53
36541043	61	59	61	60	48	55	59
37368278	59	59	59	59	51	57	58
38068168	58	58	59	58	50	56	58
38087348	61	58	56	59	61	61	61
40229177	63	63	64	63	47	62	63
40229178	62	63	64	63	47	61	62
50483795	62	63	64	63	47	61	63
50484066	59	58	58	59	61	59	58
50484322	62	60	58	61	63	62	62
50636615	64	63	62	63	65	64	64
50636616	64	63	62	63	65	64	64
50636617	63	62	61	62	65	63	63
50636618	63	62	61	62	64	63	63
50636619	62	61	60	62	64	63	62
50636628	65	64	64	65	67	66	65
50636629	65	65	64	65	67	66	65
50636635	60	60	60	60	63	61	60
50636636	61	61	60	61	63	62	61
80457733	55	57	54	57	60	60	58
80457792	55	57	54	57	60	59	58
80457889	58	58	57	58	61	60	59

GeoDirectory Building ID	Noise Level, dB L _{night}						
	SCEN 07	SCEN 08	SCEN 09	SCEN 10	SCEN 11	SCEN 12	SCEN 13
80457890	58	58	57	58	60	59	58
80457895	56	58	55	58	61	60	58
80457899	55	57	54	57	60	60	58
80457937	58	58	58	58	60	59	58
80458030	58	58	57	58	60	59	58
80463880	54	57	59	57	47	53	53
80463903	61	58	56	59	61	61	61
80463904	61	58	56	59	61	61	61
80463905	61	58	56	59	61	61	61
80464029	60	58	56	59	60	60	60
80464045	53	57	59	56	47	52	52
80464047	53	56	57	55	47	52	52
80464154	54	57	59	57	47	53	53
80464156	52	54	56	54	47	51	51
80467908	57	57	58	57	49	54	56
80467909	60	59	60	59	48	55	58
80467911	61	59	61	60	48	55	59
80467946	59	58	59	58	50	56	58
80468068	61	60	61	60	48	55	59
80468134	58	58	59	58	50	56	57
80984274	55	57	54	57	60	60	58
80984640	60	59	60	59	49	56	58

Nick Williams
for Bickerdike Allen Partners LLP

David Charles
Partner



This drawing contains Ordnance Survey Ireland data
 © Copyright and database right 2021.

LEGEND:

- Dwelling in Existing VPDS
- Dwelling not in Existing VPDS
- Existing VPDS Boundary
- Forecast VPDS Boundary, 2025 Proposed Scenario
- Shaded areas are 2025 Proposed Scenario Night, see A11267_19_DR496_1.0 for details

Rev	Date	Description	Initials

REVISIONS

**Bickerdike
 Allen
 Partners**
 Architecture
 Acoustics
 Technology

121 Salusbury Road, London, NW6 6RG
 Email: mail@bickerdikeallen.com T: 0207 625 4411
 www.bickerdikeallen.com F: 0207 625 0250

**Dublin Airport
 Change to Permitted Runway Operations**

Comparison of VPDS Boundary with
 Existing Dwellings and 2025 Proposed
 Night Contours

DRAWN: NW CHECKED: DC

DATE: July 2021 SCALE: 1:50000@A4

Drawing No:

A11267_19_DR820_1.0