



COMHAIRLE CONTAE FHINE GALL FINGAL COUNTY COUNCIL

APPENDIX 12

Fingal County Council As Built Drawing Specifications

November 2020



As Built Drawing General Specificatons

As built drawings shall be provided in the Health and Safety File as part of the Taking in charge process. Any changes that have been since the Planning stage shall be clearly indicated on the drawings. Retention planning permission may be required for same.

Drawings are to be submitted in both AutoCAD compatible (dwg/dxf) format and Pdf as required by the different appendices to the taking in charge Policy and Specifications. All Drawings to be geo-coordinated & scaled to ITM and all levels related to fixed Ordnance Survey Datum (Malin Head).

Mapping of Suds features shall be undertaken in compliance with the recommendations of "SuDS asset register and mapping" by HR Wallingford February 2019.

All Plan scales should be in common use, i.e. 1:500, 1:1000, or 1:2500 as appropriate and the different services (i.e. foul drainage, surface water, water and public lighting) should have their own individual layers.

The colors used for as built drainage and water shall be as in table 1 below except for the "Taking in charge drawing" where the drinking water and Foul drainage should be greyed out.

Table 1.

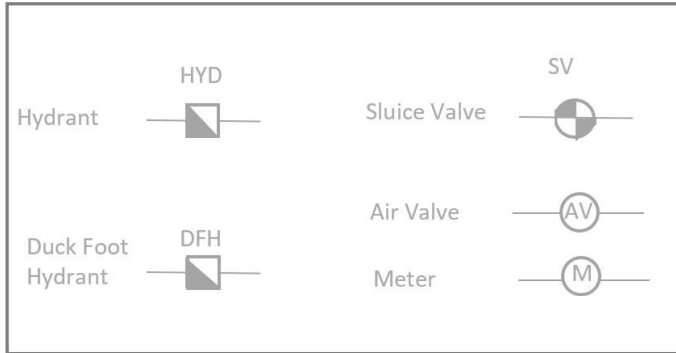
Colour	Layer
Blue	DW – Drinking Water
Red	FW – Foul Water
Green	SW – Storm Water
Purple	PL – Public Lighting

Taking in Charge Drawing Specification

The drawing(s) submitted taking in charge must be 'As Constructed' and must show all roads, footpaths, verges, open spaces, areas under management, parking areas, houses garden boundaries and site boundary. In particular it must comply with the following requirements:

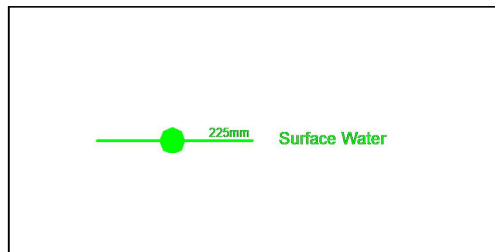
- ◆ *Drawings to be submitted in both AutoCAD (.dwg) and pdf format, via USB Memory Stick / Email / Fingal Sharepoint shared folder.*
- ◆ *The drawing must be geo-referenced to tie in with the O.S.I. maps*
- ◆ *The areas to be taken in charge ie, carriageway, cycle paths, footway and parking spaces are to be indicated by a solid yellow hatch. If possible hatching should be completed in small sections to speed up editing if changes have to be made. NOTE - Parking spaces will only be taken in charge if they have not been sold or allocated to home owners – dedicated and non dedicated/public car parking spaces should be clearly indicated.*
- ◆ *Areas that will remain under the control of a management company must be clearly hatched in a different colour.*

- ◆ The estate boundary to be depicted in red.
- ◆ Watermains including all sluice valves, hydrants and air vales etc to be greyed out and annotated with SV / HYD / DFH / AV & Water Meter etc, See samples below. All pipe diameters are also to be indicated. It must be clear on the drawing exactly what each SV isolates, when switched off.



All lines and text greyed out

- ◆ All approved changes made onsite during the construction phase must be recorded and should be reflected on the submitted drawing.
- ◆ All manholes should be indicated by a solid circle in they're respective colours, ie. green for storm and grey for foul. They must be individually referenced with the cover, invert and backdrop levels (relating to O.S.I Main Ordnance Datum) noted on a separate table.
- ◆ Foul sewer lines to be greyed out and include pipe diameters. NOTE - Only main sewer lines needed, connections to buildings or house drains are not required
- ◆ Surface sewer lines to be marked in green and include pipe diameters. NOTE - Only main sewer lines needed, connections to buildings or house drains are not required

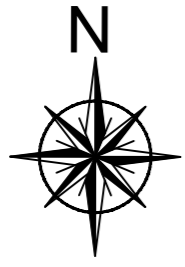


Surface Water in green colour.

- ◆ Indicate road gully positions & connections to main surface water sewers
- ◆ All road names must be clearly marked
- ◆ House numbers must be clearly marked
- ◆ The details and locations of road markings and signage including any traffic calming interventions, ramps etc should be included on the drawing.
- ◆ Total number of units in development required.
- ◆ Public lighting poles (in red).

- ◆ *The drawings should be scaleable to 1:1000 or 1:500 with all items, text and symbols etc remaining legible.*
- ◆ *North point should be included.*
- ◆ *Attenuation tank details shown.*

See Sample Taking in Charge Drawing below



FOUL SEWER				SURFACE WATER SEWER			
MANHOLE No.	COVER LEVEL	INVERT LEVEL	PIPE DIAMETER	MANHOLE No.	COVER LEVEL	INVERT LEVEL	PIPE DIAMETER
F1	80.56	79.34	225mm	S1	80.52	78.96	225mm
F20	81.11	78.91	BD-79.09	S3	81.09	78.83	BD-79.51
F2	81.26	78.84	225mm	S5	81.00	78.68	225mm
F3	80.45	78.40	225mm	S5A	80.71	76.32	300mm
F4	79.68	78.09	225mm	S6	80.30	76.25	300mm
F5	79.67	77.88	225mm	S7	79.60	76.17	2x1200mm
F6	79.46	77.60	225mm	S9	79.66	76.14	2x1200mm
F7	79.27	77.36	225mm	S11	79.41	76.11	2x1200mm
F12	80.61	76.89	BD-77.77	S14	79.21	76.095	2x1200mm
F14	7.71	76.63	BD-77.42	S20	80.58	76.30	1200mm
F15	79.42	76.53	225mm	S23	79.62	76.00	1200mm
F16	79.22	76.40	225mm	S24	79.30	75.93	1200mm
F17	78.39	75.98	225mm	S25	79.22	75.90	225mm
F18	77.84	75.75	225mm	S26	78.36	75.73	225mm
Ex. FMH	---	---	---	S27	77.77	75.59	225mm
F8	80.35	78.99	225mm	S28	76.86	75.13	225mm
F9	81.45	78.61	225mm	S29	74.04	72.64	225mm
F10	81.63	78.18	225mm	S30	72.09	71.34	225mm
F11	81.31	78.00	BD-79.47	S31	71.86	70.86	225mm
F12	80.61	76.89	BD-77.77	S32	81.99	79.68	225mm
F19	82.00	79.66	225mm	S2	81.44	79.60	225mm
F20	81.11	78.91	BD-79.09	S3	81.09	78.83	BD-79.51
F15	79.42	76.53	225mm	S4	81.35	79.90	225mm
F14	79.71	76.63	77.42	S5	81.00	78.68	225mm
				S8	81.40	79.90	225mm
				S10	79.72	78.16	300mm
				S9	79.66	76.14	225mm
				S13	79.00	76.14	1200mm
				S14	79.21	76.095	225mm
				S15	80.32	78.80	225mm
				S16	81.44	78.59	300mm
				S17	81.61	78.49	300mm
				S19	81.31	78.35	375mm
				S20	80.58	76.03	225mm
				S18	81.52	80.00	225mm
				S19	81.31	78.35	225mm
				S21	78.87	77.245	300mm
				S22	78.87	77.245	300mm
				S23	79.62	76.00	225mm
				---	---	---	225mm
				---	---	---	225mm
				S25	79.22	75.90	1200mm
				S14A	78.58	---	1200mm
				S14	79.21	76.095	1200mm

REVISIONS

THIS DRAWING DOES NOT CONSTITUTE A RECOMMENDATION TO HAVE ESTATES TAKEN IN CHARGE INTO MAINTNANCE

FOR INFORMATION ON SAME SEE LETTER DATED:

THIS MAP REFERS TO TAKING INTO MAINTNANCE/CHARGE ONLY THOSE ROADS AND SERVICES AS INDICATED IN COLOUR

EXCLUSIONS: COMMON AREAS IN THE DEVELOPMENT WHICH ARE SHOWN ON THE 'DEED OF CONVEYANCE'

DOCUMENT ARE UNDER THE CONTROL OF THE MANAGEMENT COMPANY

SENIOR ENGINEER: SINEAD MURPHY

DATE: January 2021	SURVEYED BY: OSC	NOTE: ALL FOUL AND SURFACE WATER SEWERS ARE 225mm DIA UNLESS STATED.
CHECKED BY: Martin Byrne	DRAWN BY: F McNeary	SCALED DIMENSIONS NOT TO BE USED.
APPROVED BY: Sinead Murphy	BC No: BC1577	LENGTH OF ROADS ARE AS ON THE ATTACHED ROAD SCHEDULE
CAD FILE REF: Delvin Banks_Naul	SCALE: 1:500	WATER MAINS 100mm DIA UNLESS OTHERWISE STATED.
	OS Ref No: 2849-A	

Comhairle Contae Fhine Gall
Fingal County Council

Inspectorate Division

TAKING INTO CHARGE

Delvin Banks
DED - Hollywood TL - Naul

FOUL SEWER	●	●	Foul Sewer
SURFACE WATER	●	●	Surface Water
WATER MAINS	●	●	Watermains
OTHER	●	●	Hydrant Sluice Valve Lamp Post