

Zoning Objectives

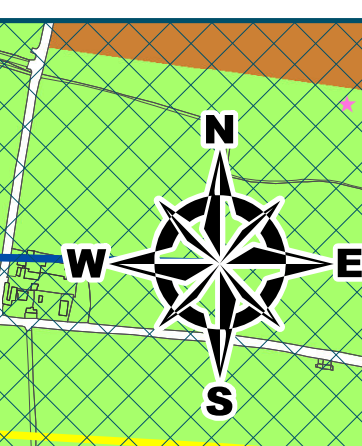
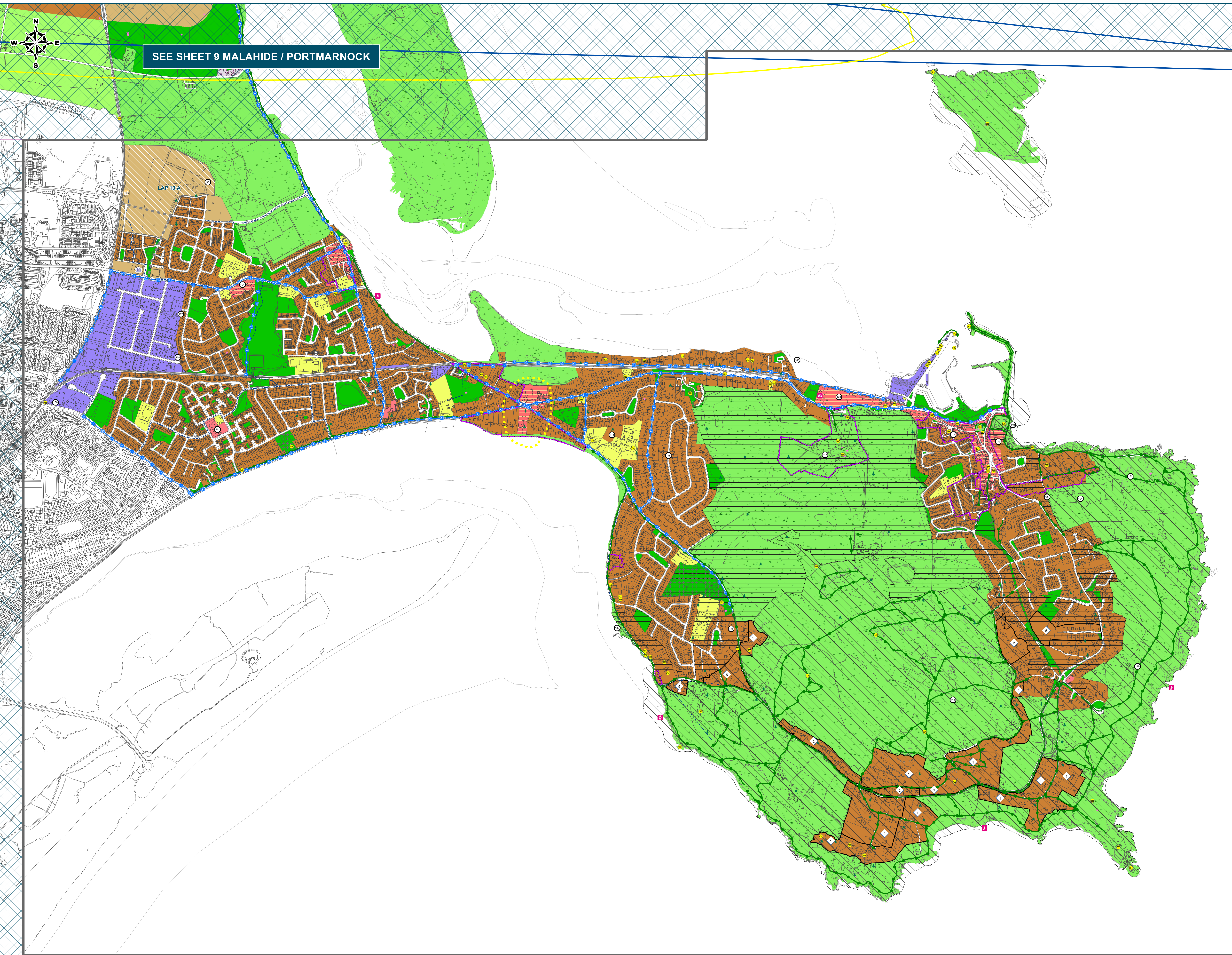
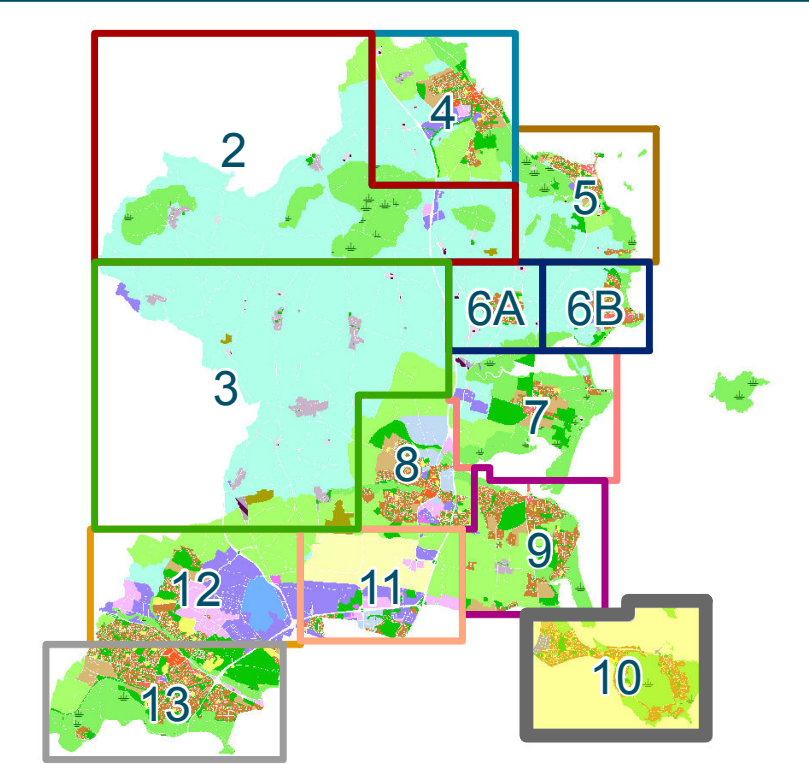
CI - Community Infrastructure	Provide for and protect civic, religious, community, education, health care and social infrastructure
GE - General Employment	Provide opportunities for general enterprise and employment
HA - High Amenity	Protect and enhance high amenity areas
LC - Local Centre	Protect, provide for and/or improve local centre facilities
OS - Open Space	Preserve and provide for open space and recreational amenities
RA - Residential Area	Provide for new residential communities subject to the provision of the necessary social and physical infrastructure
RS - Residential	Provide for residential development and protect and improve residential amenity
TC - Town and District Centre	Protect and enhance the special physical and social character of town and district centres and provide and/or improve urban facilities

Specific Objectives

Architectural Conservation Area	
Burial Site	
Density Boundary	
Howth SAA (Special Amenity Area) Buffer Zone	
Howth SAAD (Special Amenity Area Order)	
Subject to Local Area Plan	
Outer Airport Noise Zone	
Outer Public Safety Zone	
Urban Framework Plan	
Indicative Cycle/Pedestrian Route	
Road Proposal	
To Preserve Views	
Greater Dublin Area (GDA) Cycle Network	
Local Objective Points	
Protected Structures	
Recorded Monuments	
Coastal Walk	
Provide for residential development at a density per hectare as shown	
Provide for a Local Centre	
Proposed School	
Traveller Accommodation	
Protect & Preserve Trees, Woodlands and Hedgerows	

Note:
For further detail please refer to the Written Statement, Written Statement Appendices and the Green Infrastructure Maps
For further details of the Greater Dublin Area (GDA) Cycle Network please refer to Sheet 14 Green Infrastructure Map 1
To view details of Recorded Monuments and Places see www.archaeology.ie/publications/forms/legislation/record-of-monuments-and-places

Sheet Index Map



SEE SHEET 9 MALAHIDE / PORTMARNOCK

LAP 10.A