

# Fingal Community Network

## Promoting Public Participation

Information Workshop

# Workshop Agenda

- Welcome and introduction
- Background to PPN
- Fingal PPN Working Group
- Fingal Community Network Model
- Breakout Discussion Groups
- Tea and Coffee
- FCN Working Group Response to Questions
- Opportunity for Registration
- Close of Workshop

# Background

Oct 2012, Phil Hogan, Putting People First, Vision for Local Authorities.

*“Local government will be the main vehicle of governance and public service at local level -leading economic, social and community development, delivering efficient and good value services, and representing citizens and local communities effectively and accountably”.*

Feb 2014 Working Group on Citizen Engagement Report – Fr Sean Healy. Recommendation to set up Public Participation Network (PPN)

*“It is important that open and participatory systems are developed through participatory engagement with interested parties....local people and other stakeholders are genuinely engaged in shaping the decisions that affect them.”*

April 2014 Draft Guidelines issues by Dept. of Environment, Community and Local Government

# Background

- **Community Development Office** tasked with responsibility of establishing PPN
- The role of **Fingal Community & Voluntary Forum**
- **Fingal PPN Working Group** established to roll out PPN
- The Fingal Public Participation Network is called **The Fingal Community Network (FCN)**

# Role of FCN

- To contribute to the Local authority's development for the County, a vision for the well-being of this and future generations.
- To facilitate opportunities for networking, communication and sharing information between environmental, community and voluntary groups and between these groups and the Local Authority.
- To identify issues of collective concern and work to influence policy locally in relation to these issues.
- To actively support inclusion of socially excluded groups, communities experiencing high level of poverty, discrimination, including Travellers to enable them to participate at local and county level and clearly demonstrate same.
- To encourage and enable public participation in local decision making and planning of services.

# Role of the FCN

- To facilitate the selection of participation from the environmental, social inclusion and voluntary sectors onto the county decision making bodies.
- To support process that will feed the broad range of ideas, experience, suggestions and proposals of the network into policies and plans being developed by agencies and decision makers in areas that are of interest and relevant to the network.
- To work to develop the Environmental, Social Inclusion and the Community and Voluntary sectors so that the work of sectors is clearly recognised and acknowledged and the sectors have a strong collective voice within the county.
- To support the individual members of the FCN so that
  - They can develop their capacity and do their work more effectively
  - They can participate effectively in the FCN activities.
  - They are included and their voice and concerns are heard.

# Fingal Community Network FCN

Benefits of Joining FCN

Fingal Community County Register

FCN Membership

Electoral Colleges

- Community Development, Social inclusion and Environment

Structure: Plenary

Secretariat

Linkage Groups

Representation to: Secretariat

: Decision Making Bodies

LCDC, JPC and SPCs

# Benefits of Joining FCN





# Fingal Community County Register

- **Significant role** in the establishment of FCN
- CCS Database
- All FCN member groups are **required to be registered** on FCCR
- Groups **registered before 7<sup>th</sup> Nov** will have voting rights & opportunity to represent FCN
- Groups registered after this date will be FCN members without voting rights until Nov 2015
- Very important that Organisations **Name the FCN Representative** on the application form

# Criteria for Membership of FCN



# Electoral Colleges

## Community & Voluntary

### Objective & Activities

Group must focus on responses to local issues and concerns

Residents/tenants associations, sports and recreation groups, community associations, youth groups, community councils, arts groups, active retirement groups, self-help groups

## Social Inclusion

### Objective & Activities

Groups focused on poverty reduction, community development, equality and social justice

Disability, ethnic minority, family support, urban and rural disadvantage, youth, traveller, women, literacy, social justice, equality promotion, LGBT, community development, children's services, drugs & alcohol and older people

## Environment

### Objective & Activities

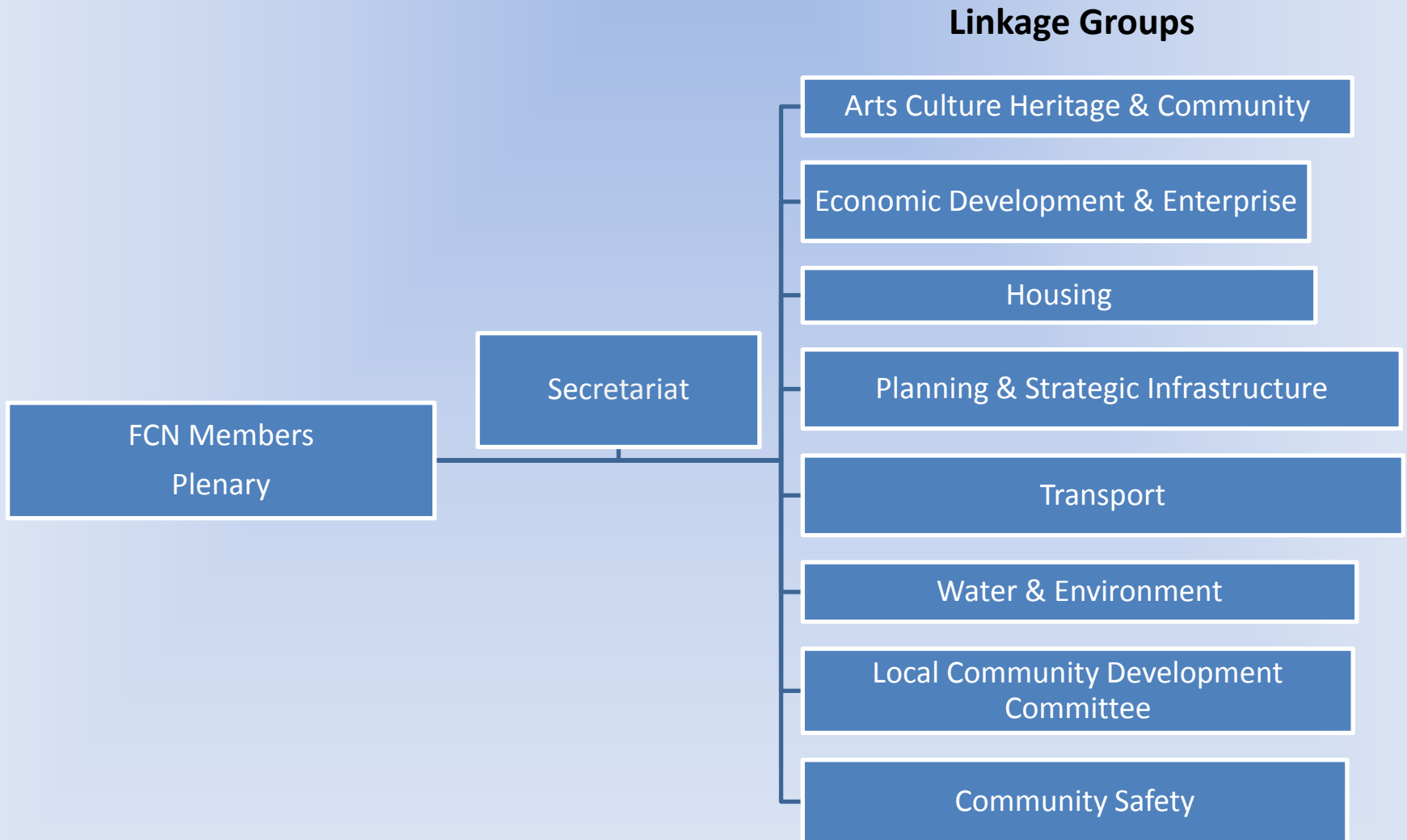
Groups must be focused on environmental (i.e. ecological) protection and/or environmental sustainability

Permanent protection of wildlife, organic horticultural and education, environmental sustainability, agreed with national organisations

# How do I select my Electoral College?

- Review all the Electoral College definitions .
- Select the definition that best describes the activities of your organisation .
- You can only select 1 electoral college on the registration form.
- The working group will review your electoral college selection.
- All organisations will receive correspondence confirming their electoral college.

# Structure



# Plenary

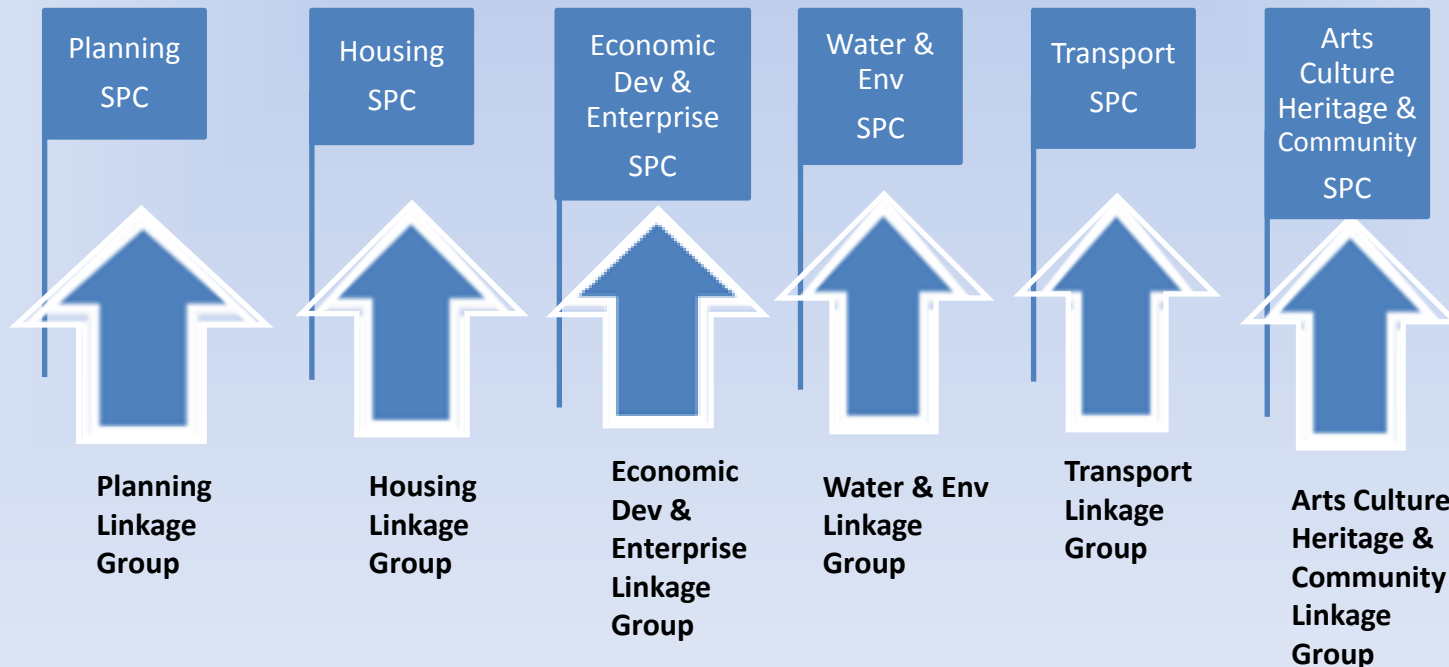
## *Ruling Body of Fingal Community Network*

- **All group registered** on Fingal County Community Register are **members**, may send a representative to the FCN Plenary
- Each member has **1 vote**
- Plenary will meet **twice a year**

# Linkage Groups

*Mechanism to enable organisations to shape decision making bodies*

- Comprised of **Common Interest Groups**
- Develop **Policy & Procedures** relevant to WG
- **Nominate & select Representatives** to decision making bodies
- **Inform & give direction** to the Representative
- SPCs, Local Community Development Committee, Joint Policing Committee



# Secretariat

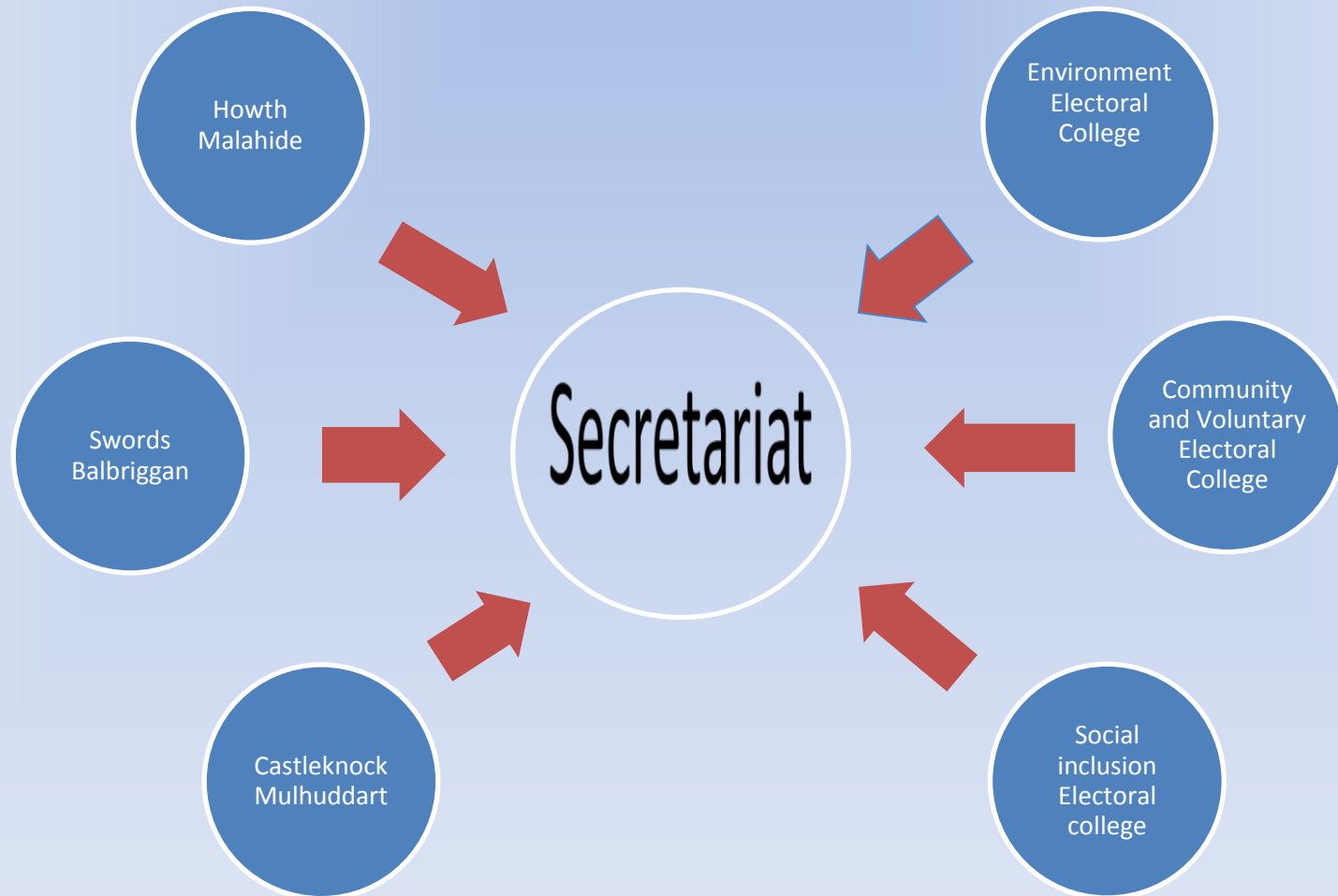
*Responsible for ensuring the proper function of  
FCN*

- **Administrative Body**
- Organise **Plenary and Linkage groups**
- **Communicate** with all FCN members
- Organising **Support & Training**
- Comprise of **12 members** from across the 3 Electoral Colleges and 3 Geographical Areas
- **Nominations** will be called & **Elections** will be held at the County Plenary in November



# Make up of the Secretariat

## 12 Members selected from 3 Electoral Colleges and geographic areas



# Decision Making Bodies

There are three sets of decision making bodies:

- Strategic Policy Committees
- Local Community Development Committee
- Joint Policing Committee

The task of the **Strategic Policy Committees**, as committees of the Council, (is) to advise and to assist the Council in the formulation and development of policy, the final policy decisions will rest ultimately with the full Council. The SPC system is intended to give Councillors and relevant sectorial interests an opportunity for full involvement in the policy-making process from the early stages.

**Local Community Development Committee** will drive meaningful citizen and community engagement in the scoping, planning, delivery and evaluation of local and community development programmes.

**Joint Policing Committees** operate in a manner that offers an opportunity to develop greater consultation, co-operation and accountability between An Garda Siochana, Local Authorities and elected local representatives, with the participation of the community and voluntary sector, on the management of policing and crime issues.

# Representation to Decision Making Bodies

FCN is tasked with the responsibility for appointing 23 FCN Members from the Electoral Colleges to the 8 Fingal County Council Decision Making Bodies

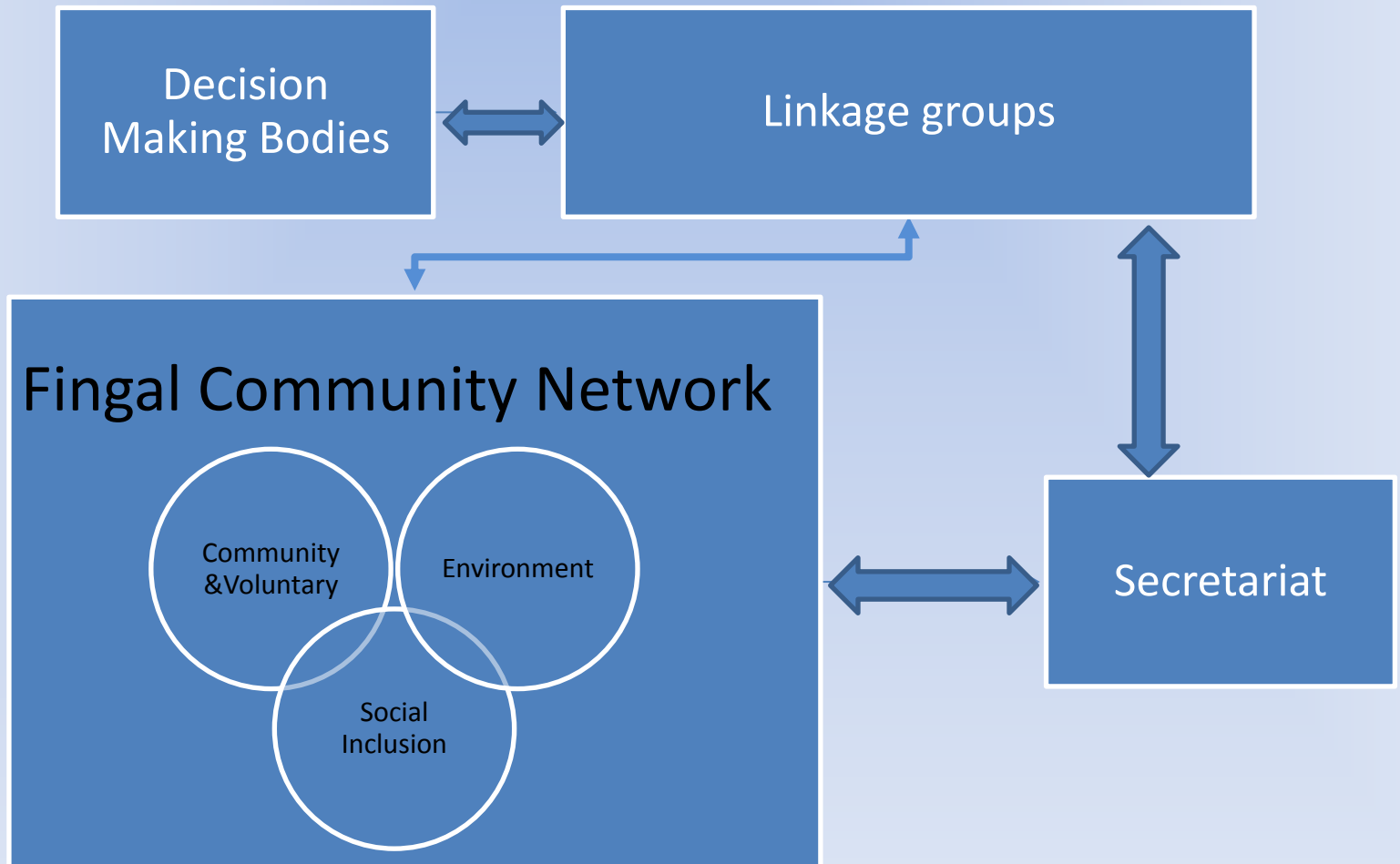
\*NB: The final decision on the numbers of seats available to the FCN on the SPC's will rest with the full Council and following the current SPC Consultation Process.

Decision Making Bodies	Electoral Colleges		
	Comm & Vol	Social Inclusion	Env
SPC Economic Development & Enterprise*	1 (not electoral College specific)		
SPC Housing*	1	1	1
SPC Transport*	1		
SPC Planning & Strategic Infrastructure*	1		1
SPC Water & Environment Services*	1		1
SPC Arts Culture Heritage and Community *	1	1	
Local Community Development Committee	2	2	1
Joint Policing Committee	3	3	1

# How can we nominate or get elected?

- Only organisations registered with FCN before 7th November may nominate and vote this year.
- Following registration, organisations will receive correspondence confirming their Membership, Electoral College, Linkage Groups and Information on the FCN representative positions.
  - This will include the description of the representative role and nomination paper.
- Organisations decides to nominate a representative.
- All nomination forms to be submitted before the 20th of November
  - Following that date, information on the candidates who have been nominated will be posted on [www.fingal.ie](http://www.fingal.ie) - including representative position, candidates name, geographic area, electoral college, 150 word Candidate Statement .
- Organisations will receive ballot papers at the County Plenary on the 29th November, whereat elections will take place.
- Working group will strive for fair representation across the geographic areas of Castleknock/Mulhuddart, Howth/Malahide and Swords/Balbriggan.
- Organisation may choose not to nominate a rep to decision making bodies. We encourage groups to participate in the FCN at a level that suits your group.

# FCN Structure



# Important Points

- FCN members can **join any Linkage groups.**
- **Name** your representative to the FCN.
- Your representative **must be a volunteer** within your organisation.
- Your FCN representative **will hold the 1 vote.**
- Your FCN representative can only be **nominee to the Secretariat and decision making bodies.**
- Your organisations can select an **Alternate** to accompany the representative to County Plenary and attend Linkage Groups only.

- An organisations FCN Representative can only be elected to **1 position** – on either the secretariat or decision making bodies.
- An organisation that has secured representation on a decision making body through an alternative process will not be eligible to nominate or elect another representative through FCN.
- **Secretariat** is an administrative body and not the vehicle for FCN members to be elected to decision making bodies.
- **Linkage groups** are the vehicle through which the FCN members can be elected to decision making bodies with the exception of the LCDC.

# Important Dates

- All registered groups will receive nomination forms and election information on week commencing **10<sup>th</sup> November**.
- Closing date for Nominations is the **20<sup>th</sup> November**.
- Candidate information will be posted online the week of **24<sup>th</sup> November**.
- Elections will take place at the Plenary on the **29<sup>th</sup> November 2014**.
  - NB: The final decision on the numbers of seats available to the FCN on the SPC's will rest with the full Council and following the current SPC Consultation Process.
- Announcement will be made at end of the County Plenary meeting.
- First Secretariat meeting is provisionally scheduled to take place on 14<sup>th</sup> January 2015 @ 7.30pm, in County Hall, Main Street, Swords.



Thank you for your attention