

# FINGAL LOCAL COMMUNITY DEVELOPMENT COMMITTEE ANNUAL REPORT 2019 & 2020



Comhairle Contae  
Fhine Gall  
Fingal County  
Council



**LCDC**  
Cúiste um Fhorbairt Pobail Áitiúil Fhine Gall  
Fingal Local Community Development  
Committee



# CONTENTS

**MESSAGE FROM THE CHAIR PAGE 5**

**STATEMENT FROM THE CHIEF OFFICER PAGE 6**

## **ONE**

FINGAL LOCAL COMMUNITY  
DEVELOPMENT COMMITTEE

**PAGE 8**

## **TWO**

FINGAL LOCAL ECONOMIC &  
COMMUNITY PLAN 2016-2021

**PAGE 22**

## **THREE**

SOCIAL INCLUSION & COMMUNITY  
ACTIVATION PROGRAMME 2018-2022

**PAGE 25**

## **FOUR**

RURAL DEVELOPMENT PROGRAMME  
DUBLIN RURAL LEADER 2014-2020

**PAGE 34**

## ABBREVIATIONS

ABBREVIATION	EXPLANATION
CEP	Community Enhancement Programme
CYPSC	Children & Young People's Services Committees
DLRCC	Dun Laoghaire Rathdown County Council
DEASP	Department of Employment Affairs & Social Protection
DEZ	Dublin Enterprise Zone
EETD	Economic Enterprise Tourism Development
ESF	European Social Fund
ESOL	English for Speakers of Other Languages
FCC	Fingal County Council
FLP	Fingal Leader Partnership
IP	Implementing Partner
LAG	Local Action Group
LEADER	'Liasion Entre Actions de Developement de l'Economie Rurale' 'Links between the rural economy and development actions'
LCDC	Local Community Development Committee
LDC	Local Development Company
LECP	Local Economic Community Programme
LES	Local Employment Services
LDS	Local Development Strategy
MABS	Money Advice & Budgeting Service
NEETS	Not in Education Employment or Training
OECD	Organization for Economic Co-operation and Development
PPN	Public Participation Network
PEIL	Programme for Employability, Inclusion and Learning
PI	Programme Implementer
RDP	Rural Development Plan
SICAP	Social Inclusion Community Activation Programme
SDCC	South Dublin County Council
TUS	Community Work Placement Initiative

This report has been prepared in the context of Chapter 2, Section 128B (1)(i) Local Government Act 2001, as Inserted by the Local Government Reform Act 2014, which states that one of the functions of a Local Community Development Committee is: "to prepare, adopt and submit to the local authority a report in relation to the performance of its functions during the year immediately preceding the year in which the report is submit"

# MESSAGE

## from the Chair 2019 & 2020



Welcome to the 2019-2020 Annual Report of the Fingal Local Community Development Committee (LCDC). The LCDC has primary responsibility for co-ordinating planning and overseeing local and community development funding and the preparation and review of element of the Local Economic and Community Plan (LECP).

Fingal LCDC provides governance, oversight and coordination of the programmes and funds. The Social Inclusion & Community Activation Programme (SICAP), Healthy Ireland Fund and the various Community Enhancement funding streams were administered by the LCDC secretariat. The LCDC is also central to the Dublin Rural LEADER, the rural development programme for Fingal, Dublin Dun Laoghaire (DLR) and South Dublin rural areas.

Oversight and co-ordination of the programmes is supported and augmented by Fingal County Council, Pobal, the Department of Rural & Community Development (DRCD) and the Department of Health. SICAP facilitates communities to work collaboratively with all stakeholders using a broad range of supports and interventions.

2019 & 2020 saw the continuity in the delivery of SICAP by Empower and delivery of LEADER by Fingal Leader Partnership (FLP).

SICAP facilitates communities to work collaboratively with relevant stakeholders using a broad range of supports and interventions. 2020 brought the new challenge of the Covid 19 Pandemic. Empower continued to support disadvantaged communities and individuals in Fingal through the Community Forum & SICAP. Targeted programmes focusing on groups and individuals in most need, were delivered rapidly and with the flexibility to meet the ever-changing situation. I would like to acknowledge the excellent performance by Empower in also delivering their goals and objectives during 2019 and 2020.

I would also like to acknowledge Fingal Leader Partnership for its role in the Dublin Rural LEADER Development Programme. The programme is administered by FLP and overseen by the Dublin Rural LEADER Local Action Group (LAG). Funding for projects came on stream in 2018. FLP continued to work positively and productively with partners through 2019 & 2020. They overcame the challenges of working through the Covid 19 Pandemic to complete many projects and develop new projects.

The Public Participation Network (PPN) is another cornerstone of the LCDC. The five PPN representatives on the committee link back to the PPN. This link is vital to the relevance of the LCDC for our communities and a valuable and positive contribution to civic life in Fingal.

The work of the LCDC is supported by the staff in the Economic Enterprise Tourism and Cultural Development Directorate of Fingal County Council. The success and relevance of the LCDC is dependent on the commitment and expertise of the staff in the Directorate. I would like to commend the Director of Services, the Chief Officer and all the staff in the Directorate for their work in developing and enhancing structures in the LCDC and partnerships with communities, government agencies, the business community and stakeholder groups.

Finally, I would like to thank the outgoing Chair, Pat O'Connor, for his hard work and commitment to the LCDC and also thank Director of EETCD, Emer O'Gorman, for taking the position of interim chair before my election in February 2020. I would like to thank everyone involved in the LCDC for their continued support during 2019 and for their excellent response to the challenges of delivering all programmes through 2020 during the pandemic.

I look forward to continuing to chair the LCDC in 2021

*Laurence Ward*

**LAURENCE WARD**

Chairperson Fingal LCDC

# STATEMENT

## from the Chief Officer 2019 & 2020



The Local Government Reform Act 2014 gives legislative effects to the commitments in 'Putting People First'. Local Community Development Committees (LCDC) were established in each local authority administrative area. Each LCDC has the responsibility of developing, co-ordinating and implementing a coherent and integrated approach to local and community development..

The guiding principles of the Local Development Committee are:

- Have a clear focus on Social Inclusion, marginalised communities and individuals
- Promotion of enterprise, employment development, training and education, as a key element in supporting sustainable communities
- Planning and programme implementation that makes the best use of available resources for citizens and communities

During 2019 & 2020, the LCDC continued to monitor the implementation and progression of the Local Economic and Community Plan (LECP) 2016-2021. The changing landscape for individuals and communities due to Climate Change, Brexit and the Covid 19 Pandemic all brought new challenges.

The Social Inclusion & Community Activation Programme (SICAP) is a key intervention for difficult to reach groups. In 2019 & 2020 delivery was overseen and managed by Fingal LCDC. SICAP aims to address poverty, long term unemployment and social exclusion through local engagement and partnerships between disadvantaged individuals, community organisations and public sector agencies.

The total budget for SICAP in Fingal in 2019 was €1,209,846 & in 2020 was €1,246,141. A contribution comes from the European Social Fund (ESF) Programme for Employability, Inclusion and Learning (PEIL) 2014-2020 and the Youth Employment Initiative. The Programme Implementer Empower, achieved its two key performance indicators (KPI's) in both 2019 & 2020. This ensured that the programme and services were delivered within the financial parameters approved by the LCDC.

The Dublin Rural Local Action Group (LAG) was established to deliver the LEADER element of the Rural Development Programme (RDP) for the period 2014-2020 in the Dublin rural area. The LEADER Programme aims to improve the quality of life in rural areas and encourage diversification of economic activity in rural areas. The allocated fund represents 6.37 million, and of this €4.74 million will be available for local projects in the region.

The 17 members of the LAG all have a significant body of experience and expertise across the social community economic and environment sectors. The LAG is responsible for designing and implementing the LEADER Local Development Strategy (LDS) making decision on actions funded through the LDS and managing funding allocated to the LDS in the Dublin Rural areas. Fingal County Council is the lead financial partner. During 2019 the LAG approved 12 projects totalling €319,512.18. In 2020, the LAG approved of 40 projects totalling €3,278,107.79.

In 2019, the LCDC administered several programmes on behalf of the Department of Rural and Community Development (DRCD) under the Community Enhancement Programme. Projects approved for funding aligned with the strategic objectives and actions of the Fingal Local Economic objectives and actions of the Fingal Local Economic and Community Plan (LECP). 90 projects were funded totalling €150,521 and an additional fund of €13,089 was distributed to 10 Men's & Women's Shed's.

In March 2020, due to the Covid 19 pandemic, the work of the LCDC moved online in accordance with Government and HSE guidelines. Various Community Enhancement Programme (CEP) schemes were implemented by the LCDC, to help combat the effect of Covid on vulnerable individuals & communities. The schemes in 2020 included CEP Capital Grants Scheme which funded 73 groups totalling €68,375 and the CEP Community Centres and Facilities Capital Scheme. The total amount distributed to 50 groups totalled €192,805.

The Government announced the Round 3 Healthy Ireland Fund 2019 –2021. The LCDC oversaw the development of programmes for Round 3 funding. A total of €96,360 was received to fund five joint actions with Fingal CYPSC. A further €94,100 went to three Community Mental Health Initiatives, including €30,000 to fund small community group projects. Three further actions were funded which created two new positions, the Healthy Ireland Co-Ordinator and a Pilot Social Prescriber and €30,000 funding was received for Community Engagement Actions. Total funding for this round of Healthy Ireland was €334,460.

2020 brought many challenges to the work of the LCDC & LAG as a result of the Covid 19 Pandemic. I would like to commend the Fingal Community Forum, all stakeholders including Empower & FLP, community groups, Local Authority staff, and all involved in continuing to implement all the programmes that have enhanced the life of the citizens of Fingal and I look forward to a brighter future in 2021.

*Declan Ryan*

**DECLAN RYAN**



# SECTION 1

# Fingal Local Community Development Committee



# SECTION 1

## Fingal Local Community Development Committee



Members of Fingal LCDC with newly appointed Chief Executive AnneMarie Farrelly.

Standing: Adeline O'Brien, Eilish Harrington, Cathal Boland, Anthony Cooney, Roger Blackburn, Geraldine Rooney, Oisín Geoghegan, Una Caffrey, Anthony Brennan, Ellen O'Dea, Laurence Ward, Mary McCamley, Máire O'Brien & Paula Moyles.

Seated: Fran Creed, Declan Ryan, Emer O'Gorman, AnnMarie Farrelly, Pat O'Connor & Sinead McKenna

**The Local Government Reform Act 2014 gives legislative effect to the commitments in 'Putting People First', including the establishment of LCDC's in each local authority administrative area, for the purposes of developing, co-ordinating and implementing a coherent and integrated approach to local and community development.**

### GUIDING PRINCIPLES OF THE LOCAL COMMUNITY DEVELOPMENT COMMITTEE

- A clear focus on Social Inclusion, marginalised communities and the marginalised within communities
- Promotion of enterprise, employment development, training and education, as key element in supporting sustainable communities
- Planning and programme implementation that makes the best use of available resources for citizens and communities

### THE FUNCTIONS OF THE LCDC ARE

- Prepare and arrange for the implementation of the Community element of a six year Local Economic and Community Plan
- Co-ordinate, manage and oversee the development of local community development programmes
- Review, monitor and revise actions and strategies set out to achieve the objectives of the Local Economic and Community Plan
- Promotion of enterprise, employment development, training and education, as a key element in supporting sustainable communities.
- Improve the co-ordination of all public funded local and community development programmes in the administrative area

Note: Section 1288 of the Local Government Act 2001 sets out the functions of the LCDC's

The functions of a local authority regarding promoting the interests of communities as set out in Section 66 of the 2001 Local Government Act, delegated to LCDCs, section 128(2)

# LCDC Members Profiles 2019 & 2020



## **CLLR. CATHAL BOLAND**

Cathal has 23 years' service as a Fingal Councillor (Rush Lusk LEA). He served as Cathaoirleach/Mayor of the Local Authority on two occasions and Area Chair on numerous occasions. A member of County Dublin VEC from 1984 to 2004. He Chaired the Committee and many school Boards and The County Voluntary Youth Council. He also Chaired the Establishment Committee of the Tallaght RTC. (Institute of Technology). Cathal served on the County Enterprise Board. He is an Institute of Directors member. His background is as a Senior Manager in the Service industry and in recent years operated a General Management Consultancy, He has experience of Directorships across Voluntary Community and Commercial enterprises.



## **CLLR. MARY MCCAMLEY**

Mary McCamley has been a Labour Councillor on Fingal County Council since 2012. She retired from HSE after serving several years as Patient Services Officer in Connolly Hospital. She attended Trinity College as a mature student and has a B.Sc. in Health Management. Mary lives and represents the people of Mulhuddart and is the chair of the local community centre. She also sits on the boards of several community facilities and local schools as well as Draiocht Arts Centre, Blanchardstown. Mary is originally from Finglas, is a keen gardener and has a strong interest biodiversity and environmental issues.



## **CLLR. DAVID HEALY** - Retired in 2021

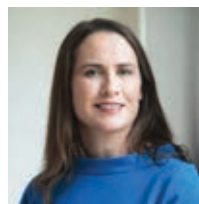
David was elected Mayor of Fingal in 2019. David is the Green Party spokesperson on Climate Change and represent Howth-Malahide on Fingal County Council. I am qualified in Law and Environmental Science and work as a climate change policy researcher. On Fingal County Council I have led the Council's engagement with climate change issues, including the transition to warmer energy efficient housing and the development of the Council's Climate Action Plan. I have driven the development of segregated cycle facilities including the northern section of the Sutton to Sandycove route and the Baldoyle to Portmarnock Greenway. I am a member of the Eastern and Midland Regional Assembly and the Howth Special Amenity Area Management Committee.



## **CLLR. JOAN HOPKINS**

Joan lives and works in Baldoyle as a community development manager for Baldoyle Forum, a registered charity. She has 20 years' experience working in Banking and Finance. Joan holds a Masters' Degree in Organisational Behaviour.

She is a former member and chairperson of Baldoyle Tidy Towns. Joan is passionate about biodiversity and making our communities more sustainable & liveable. Joan grew up working in her family's local business and wants to support businesses with the community.



## **EMER O'GORMAN**

Emer joined Fingal County Council at the end of 2018 from Louth County Council where she had been the Director of Service with responsibility for Corporate Services, HR, Environment and European Relations. She has 24 years of local government and semi-state experience in a range of departments and areas including Environment, Housing, Community and Enterprise, Economic Development, Corporate Services, HR, Procurement and Shared Services.

Emer holds a Bachelor of Business Studies (Finance) and a Masters' in Business Administration from NUI and DCU respectively.



## **OISIN GEOGHEGAN**

A Master of Business Studies graduate of University College Dublin, Oisín Geoghegan is the Head of Enterprise in Fingal County Council, since April 2014. Prior to this appointment he served 14 years as Chief Executive at the Fingal County Enterprise Board. Oisín previously held managerial positions in Export Sales and Marketing for Irish and Scandinavian manufacturers of industrial equipment in the food processing sector operating in the UK and Ireland. He has been Chairperson of the Network of 31 Local Enterprise Offices (two-year term) and has many years' experience chairing various enterprise development strategy groups and national committees.



**PAT O'CONNOR**

Pat O'Connor is Head of School of Humanities, Blanchardstown Campus at the newly created Technological University Dublin. Pat holds a doctoral degree from the University of Manchester and has been involved in further and higher education for 30 years. Pat's teaching interests extend across business, accountancy and humanities and he has extensive experience in programme design in higher education. His research interests include higher education, research methodology and community development. Pat's community contributions include Chair of the Board of Management of St Patrick's Junior National School, Corduff and coach at Hartstown Huntstown Football Club.



**PAULA MOYLES**

Paula is an Area Manager for the Department of Family Affairs & Social Protection. She works in the Intreo Centre, Blanchardstown, Dublin 15.



**ELLEN O'DEA**

Ellen O'Dea is Head of Service for Health and Wellbeing in the HSE Community Health Organisation Dublin North City and County since November 2016. From 2002 she has worked in management roles within the HSE, previous roles include General Manager for Primary Care and Disability Services, Primary Care Manager & Occupational Therapy Manager. She has a particular interest in community participation in health. In previous roles set up community participation and engagement structures within the HSE. Ellen has a BSC (Hons) in Occupational Therapy, Diploma in Leadership and Quality in Healthcare and an MSc in Health Service Management.



**LISA DOYLE**

Lisa Doyle works for the Department of Employment Affairs and Social Protection.



**UNA CAFFREY**

Una is the coordinator of Fingal Children and Young Peoples Services Committee (FCYPSC). Una's role is to support FCYPSC in its work to bring together a diverse group of agencies in Fingal to engage in joint planning and co-ordination of services for children and young people.

Una is a firm believer in working together to achieve better outcomes for children and young people and supports the participation of children and young people to inform the work of FCYPSC.

Una brings to FCYPSC a wealth of experience of working in the community and voluntary sector having worked for Focus Ireland, Barnardos, Fingal County Childcare Committee to name a few. In her previous role Una coordinated the delivery of child protection training to early years professionals in Fingal. Una holds a Bachelor of Arts degree from Dublin Institute of Technology and a post grad in child protection from Trinity College Dublin.



**ANTHONY BRENNAN**

Anthony Brennan, Chairperson of Woodland Park Residents Association and board member of Rush Community Council, Anthony has always liked to be involved with community groups, working to be part of the Community and working with the Local Authority. The more the community groups work together he says, the more we get for each other.



**ROGER BLACKBURN**

Roger Blackburn is one of the five Public Participation Network members elected as representatives on the LCDC. By profession, he is a semi-retired chartered accountant with expertise in international finance, tax, treasury, and corporate governance matters. In the community, he is treasurer of Naul Community Council & Tidy Towns, and is particularly interested in local history, community and rural development



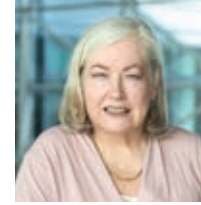
**ALICE DAVIS** - Retired in 2021

Alice Davis is an active Community Development worker and has been involved in Balbriggan Meals on Wheels for more than 15 years. Working as a trainer with Lir Anti Racism Training & Education programme and is registered with the Teaching Council of Ireland. She is a Board member of Balbriggan Meals on Wheels and the Balbriggan Community Council.



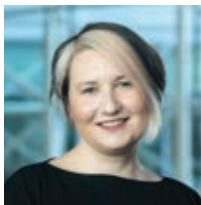
**GERALDINE ROONEY**

Geraldine Rooney is a Development officer with the Blanchardstown Center for Independent Living who provides rights-based information and advice for people with disabilities. The centre provides a number of community support services such as transport, home support, volunteers and a radio show for disabled people who live independently, Empowerment and inclusion of people with disabilities is her passion and she has been involved with local community groups for the last thirty years. Geraldine is involved with the Dublin 15 Disability Peer Support Group which supports people with disabilities to take part in their community and have their voices heard.



**MAIRE O'BRIEN**

Máire O'Brien, M.Sc. Environmental Science. Máire has been nominated by the PPN to represent Environmental issues on the LCDC. She is from Portmarnock and is involved with the Portmarnock Community Association and Beach Committee, An Taisce Coastcare Group. She is now retired as a lecturer with the Open University, formerly in Environmental Control and Public Health. Máire has an interest in most things environmental, especially water, both fresh and salt water.



**ADELINE O'BRIEN**

Adeline O'Brien has worked in the not for profit and social enterprise sector for twenty years. Roles have ranged from Development Director (Cork Opera House) to Director of the Fundraising Institute of Ireland and CEO of an Education & Training facility for at risk young people and their families in Dublin 10. Adeline was a founding Director of the Cherry Orchard Regeneration Company, and a founding member of the Dublin 10 Restorative Practice steering group.

Adeline worked as Consultant in the not for profit sector particularly in the areas of Governance, Strategy and Management, Work & Organisational Psychology / Behaviour. Adeline also provided support in terms of crisis management, operational quality audits and evaluations. Adeline was appointed CEO of Blanchardstown Area Partnership in January 2017 and has led a change management process including renaming the service to Empower CLG.



**EILISH HARRINGTON**

Eilish Harrington took up the position of CEO with Fingal LEADER Partnership in September 2018. In this role Eilish works with her team to deliver the LEADER 2014-2020 programme across rural Dublin, Jobs Club in Swords and Tús in the Fingal area. She has a background in Community Development and brings experience and knowledge in this field to her role in FLP. Eilish graduated with a BA Honours Degree in Public and Social Policy from NUI Galway. After her studies she worked with Special Olympics Munster as a Development Officer and most recently as Co-ordinator of Employ Ability Services West Cork.



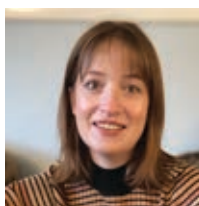
**LAURENCE WARD**

Laurence is a dry stock farmer near Oldtown, North County Dublin. His passions are GAA football and farming. He is a member & chairperson of Fingal Local Community Development Committee. Laurence is also a member and chairperson of the Dublin Rural LEADER Local Action Group. He is also County Chairman of Dublin Irish Farmers Association.



**ANTHONY COONEY**

Anthony Cooney is Chief Executive Officer of Fingal Dublin Chamber of Commerce. Fingal Dublin Chamber is the representative of the business community covering the greater Fingal Region. Anthony has more than 20 years' experience at director level working with Private Equity Operators of businesses in the B2B and B2C sectors of major companies operating in both the UK and Ireland.



**CLAIRE SHANAHAN**

Claire Shanahan has been an Assistant Principal Officer in the Department of Social Protection since October 2019 and has worked for the Department for 10 years. She currently has responsibility for Employment Services in Intreo Centres in Balbriggan, Swords, Ballymun, Blanchardstown and Finglas. Prior to her role in Employment Services, Claire was involved in Public Procurement, Information Systems Training and Public accounts and audit. Before joining DSP, Claire worked in data protection training and awareness in Department of Enterprise Trade and Employment. Claire has a BSc in Multimedia from Dublin City University.

## RETIRED MEMBERS 2019 & 2020

Thank you to the following members whose attendance and valuable contribution to the LCDC during 2019 & 2020 made for two successful years. We wish you well in your future endeavours.

NAME	ORGANISATION	CATEGORY
Cllr. Tony Murphy	Fingal County Council	Local Authority Member
Cllr. Natalie Treacy	Fingal County Council	Local Authority Member
Cllr. Brian McDonagh	Fingal County Council	Local Authority Member
Cllr David Healy	Fingal Count Council	Local Authority Member
Aneta Laska	Fingal PPN	Community Voluntary Interest
Siobhan Lawlor	DEASP	State Agency
Lisa Doyle	DEASP	State Agency
Paula Moyles	DEASP	State Agency

## CATEGORY MEMBERSHIP OF FINGAL LOCAL COMMUNITY DEVELOPMENT COMMITTEE (LCDC) 2019 & 2020

NAME	CATEGORY	ORGANISATION
Tony Murphy	<b>Local Authority Member</b> Balbriggan/Swords	Fingal County Council
Cathal Boland	<b>Local Authority Member</b> Balbriggan/Swords/Rush/Lusk	Fingal County Council
Natalie Treacy	<b>Local Authority Member</b> Blanchardstown/Mulhuddart	Fingal County Council
Mary McCamley	<b>Local Authority Member</b> Blanchardstown/Mulhuddart	Fingal County Council
Brian McDonagh	<b>Local Authority Member</b> Howth/Malahide	Fingal County Council
David Healy	<b>Local Authority Member</b> Howth/Malahide	Fingal County Council
Joan Hopkins	<b>Local Authority Member</b> Howth/Malahide	Fingal County Council
Emer O’Gorman	<b>Local Authority Official</b> Chief Executive’s Nominee	Fingal County Council
Oisin Geoghegan	<b>Local Authority Official</b> Local Enterprise Office	Fingal County Council
Pat O’Connor	<b>State Agency</b> Higher Education Institute	Technological University of Dublin
Paula Moyles	<b>State Agency</b> DEASP	Dept. of Employment Affairs & Social Protection
Claire Shanahan	<b>State Agency</b> DEASP	Dept. Of Employment Affairs & Social Protection
Lisa Doyle	<b>State Agency</b> DEASP	Department of Employment Affairs & Social Protection
Una Caffrey	<b>State Agency</b> TUSLA	TUSLA Child and Family Agency
Ellen O’Dea	<b>State Agency</b> HSE	HSE Head of Service, Healthy & Wellbeing
Anthony Brennan	<b>Community Voluntary Interest</b> Woodland Park Residents Association – Rush	Fingal Public Participation Network
Roger Blackburn	<b>Community Voluntary Interest</b> Naul Community Council	Fingal Public Participation Network
Alice Davis	<b>Social Inclusion Interest</b> Balbriggan Meals on Wheels	Fingal Public Participation Network
Geraldine Rooney	<b>Social Inclusion Interest</b> Blanchardstown Centre for Independent Living	Fingal Public Participation Network
Máire O’Brien	<b>Environmental Interest</b> Portmarnock Community Association and Beach Committee	Fingal Public Participation Network
Adeline O’Brien	<b>Local Development</b>	Empower
Eilish Harrington	<b>Local Development</b>	Fingal LEADER Partnership
Laurence Ward	<b>Farming and Agriculture</b>	The Irish Farmers Association
Anthony Cooney	<b>Business and Employers</b>	Chambers Ireland

PUBLIC (STATUTORY)

PRIVATE (NON-STATUTORY)

## FINGAL LOCAL COMMUNITY DEVELOPMENT COMMITTEE MEETINGS 2019 & 2020

NAME	20th Feb 2019	15th May 2019	28th Aug 2019	2nd Oct 2019	11th Dec 2019	26th Feb 2020	8th July 2020	5th Nov 2020	16th Dec 2020
* Cllr. Tony Murphy	√	√	-	-	-	-	-	-	-
*Cllr. Natalie Treacy	√	√	-	-	-	-	-	-	-
*Cllr. Brian McDonagh	√	×	-	-	-	-	-	-	-
*Cllr. Mary McCamley	-	-	√	√	√	√	√	√	√
* Cllr. Cathal Boland	-	-	√	√	√	√	√	√	√
* Cllr. David Healy	-	-	×	×	×	×	×	-	-
**Cllr. Joan Hopkins	-	-	-	-	-	-	-	√	×
Emer O’Gorman	√	√	√	×	√	√	√	√	√
Oisín Geoghegan	√	×	×	×	√	√	√	√	×
Pat O’Connor	√	×	√	×	√	√	×	√	√
Ellen O’Dea	√	√	√	√	√	√	×	√	×
Una Caffrey	√	×	√	√	√	√	√	√	×
Anthony Brennan	√	×	√	√	√	√	√	√	√
**Aneta Laska	√	√	-	-	-	-	-	-	-
** Roger Blackburn	-	-	√	√	√	√	√	√	√
Alice Davis	√	√	√	√	√	√	√	√	√
Maire O’Brien	√	√	√	√	√	√	√	√	√
Geraldine Rooney	×	√	√	√	√	√	√	√	√
Adeline O’Brien	√	×	√	×	√	√	√	√	√
Eilish Harrington	√	√	√	√	√	√	√	√	√
Laurence Ward	×	√	√	√	√	√	√	√	√
Anthony Cooney	×	×	×	√	√	√	×	×	×
***Lisa Doyle	×	√	√	×	-	-	-	-	-
***Paula Moyles	-	-	-	-	√	√	×	-	-
*** Claire Shanahan	-	-	-	-	-	-	-	√	√
<b>Number attended</b>	15/18	11/18	15/18	12/18	17/18	17/18	13/18	17/18	12/18

\* Following the Local Elections in May 2019 Cllrs. Tony Murphy, Natalie Treacy & Brian McDonagh resigned & were replaced by Cllrs. Cathal Boland, Mary McCamley & David Healy. Cllr. David Healy resigned in June 2019 following election as Mayor of Fingal County Council and was replaced by Cllr. Joan Hopkins

\*\* Aneta Laska was replaced by Roger Blackburn

\*\*\* Lisa Doyle was replaced by Pamela Moyles who was then replaced by Claire Shanahan

Present √      Apologies X      Absent without apologies O

# The Fingal Public Participation Network

The Public Participation Network (PPN) was introduced following the enactment of the Local Government Act 2014. PPNs are collectives of environmental, social inclusion and voluntary organisations. Representatives are nominated to participate in and inform Local Authority decision making structures.

Fingal Public Participation Network is Fingal's new framework for public engagement. It will provide the structure to facilitate the two-way flow of information between the Local Authority and

Community, Voluntary and Environmental groups. The network enables residents of Fingal and community organisations to influence plans and policies for the future development of the County

The 19 member of Fingal LCDC has broad representation from public and private interests including business, local development, education, enterprise, agriculture, voluntary and local authority members The Fingal Local Community Development Committee has five PPN representatives.



(L-R) Geraldine Rooney, Blanchardstown Centre for Independent Living, Máire O'Brien, Portmarnock Community Association & Beach Committee, Alice Davis, Meals on Wheels, Anthony Brennan, Woodland Park Rush, Residents Association, Roger Blackburn, Naul Community Council.



# LCDC Funding 2019 & 2020

In 2019 & 2020, the LCDC administered a number of programmes on behalf of the Department of Rural and Community Development (DRCD) Projects approved for funding aligned with the strategies, objectives and actions of the Fingal Local Economic and Community Plan (LECP)

## Community Enhancement Programme 2019

The Community Enhancement Programme (CEP) funding from the Department of Rural & Community Department is a capital grant programme that provides funding to enhance facilities in disadvantaged areas.

The CEP provides a flexible and targeted approach to funding communities most in need and is aimed at addressing disadvantage as identified in the Fingal Local Economic and Community Plan. The LCDC welcomed the additional funding which will allow investment in communities across Fingal. The LCDC looks forward to working with the many

community and voluntary groups to bring their projects to fruition. The level of funding made available recognises the important role played by community and voluntary groups in addressing disadvantage in Fingal Communities.

The Community Enhancement Programme supports a range of investments in all areas of communities such as childcare groups, playgrounds, the elderly, recreational groups, sports grounds and landscaping.

Fingal County Council was allocated funds of €150,521.00 under the 2019 Community Enhancement Programme and an additional €13,089.00 for Men and Women's sheds.

Fingal's Local Community Development Committee (LCDC) approved the allocation of €150,521 to 90 voluntary groups across the county, in 2019.



## Men's & Women's Shed Fund



Valid applications were received from 10 Men's Sheds and 1 Women's Shed in the Fingal area. The LCDC agreed to divide 2019's Men's and Women's Shed fund of €13,089.00 equally between the 11 sheds' as per the Department's guidelines



### Community Enhancement Programme 2020

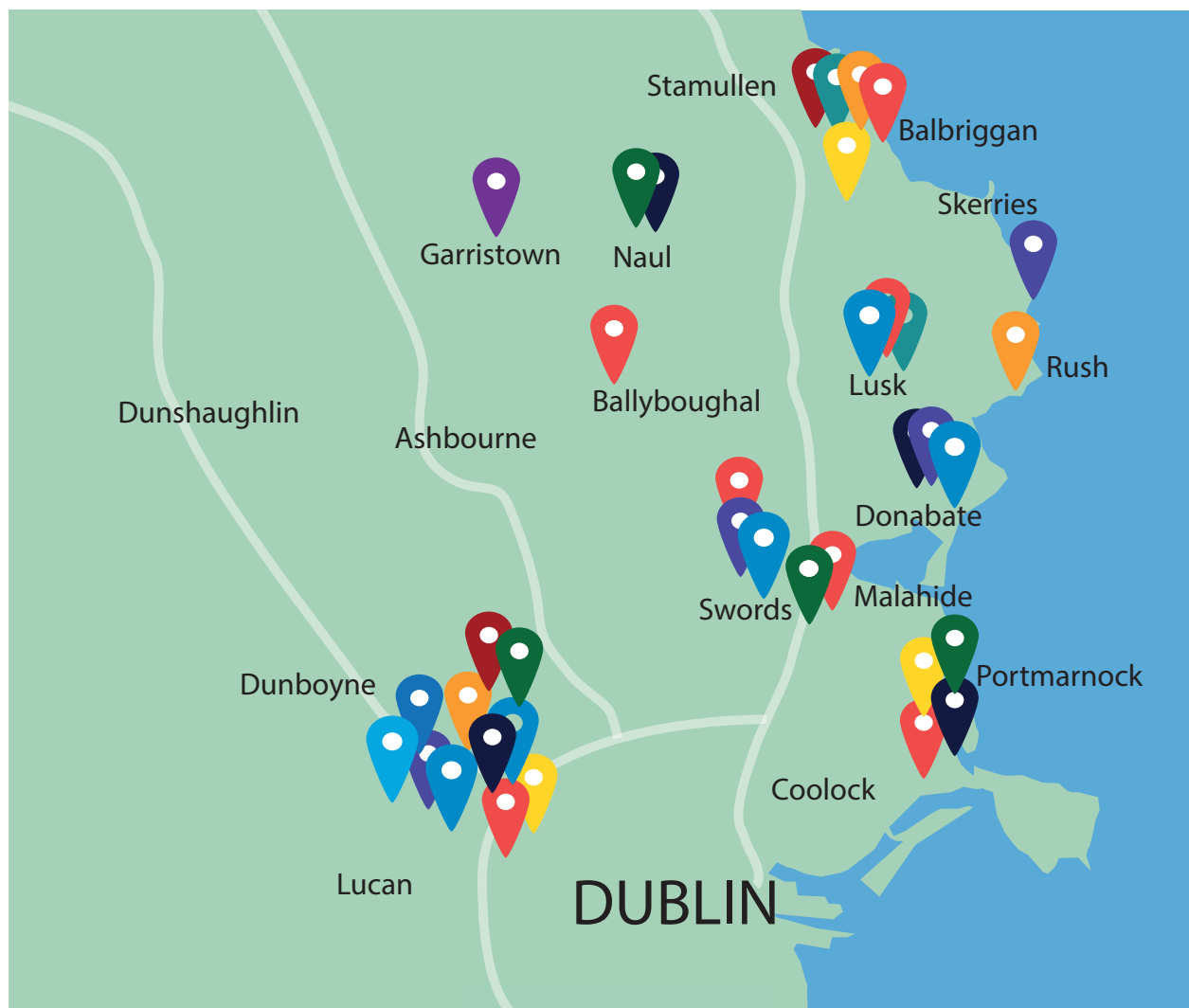
In 2020, there were 2 strands of funding given under the Community Enhancement Programme. In the first strand €68,375.00 was allocated by the Department of Rural & Community Development to Fingal County Council for the Community Enhancement Programme. Of the 114 groups that applied to the scheme, 75 groups were successful in receiving funding. In contrast to previous years, the 2020 scheme allowed groups the flexibility to use the funding for Covid-19 related expenditure, where demonstrated priorities were identified.

A second strand of €192,805.00 was allocated for the Community Enhancement Programme, Community Centers and Community Facilities

Scheme. There were 54 applications received under this programme in 2020. Many projects across Fingal received funding through the scheme including Naul Hall Users Group (€10,000), Mulhuddart Community Centre (€7,500), Mid Sutton Community Centre (€6,000), Balbriggan Cricket Club (€8,000) and O'Dwyers GAA Club (€6,295) among others.

The LCDC looks forward with confidence to supporting local community and voluntary groups into the future.

A map of the groups that received funding from the scheme is shown in the Figure below.



### Healthy Ireland Funding 2019 & 2020

Healthy Ireland is a Government led initiative aimed at improving the health and wellbeing of everyone living in Ireland.

#### Healthy Ireland Round 3:

The LCDC oversaw the financial administration and implementation of Round 3 of the Healthy Ireland Programme with a total budget of €280,000. Round 3 funding included the roll-out of a pilot Social Prescribing Project in Dublin 15, the recruitment of a Healthy Fingal Coordinator and the commencement of the Community Engagement Programme along with a number of activities led by CYPSC.



The five Projects that received funding were as follows:

- Young Persons & Parents Club - Aster Family Centre
- Homework Club - Aster Family Centre
- Cyber Safety Blakestown & Mountview Youth Initiative
- Wellbeing - Foróige
- Activities for 5-9 year olds - Mulhuddart Community Centre

### Healthy Ireland Community Mental Health Fund

A further €64,100 was received for Community Mental Health. Two projects were supported by this fund.

The CYPSC led project, Adverse Childhood Experiences (ACE's), was run by Aoibhneas & Crosscare. This project was for young people who specifically need support around anxiety, stress, social isolation or social anxiety and are finding daily life hard to cope with or who hit a crisis in their lives at a certain time.

The second project, Our Recovery: Learning Together with the Recovery College and Dublin Dun Laoghaire Educational Training Board. DDLETB worked with The Recovery College, whose programmes are non-medical interventions; and are a mechanism for linking people recovering from mental health issues to non-medical sources of support within the community to improve physical, emotional and mental wellbeing. This collaboration between DDLETB with the Recovery College provides a platform for delivering programmes, specifically to meet the needs of those recovering from mental health problems.

Also, as part of Round 3 Community Mental Health Fund, the Small Grants Scheme was launched which saw 8 local community projects and services awarded funding of between €2,000 and €5,000 to run local level initiatives that promote and enhance mental health and well-being.



Little Seeds Arch Club meeting for a 2k socially distanced walk with the assistance of An Garda Síochana



**Community Resilience Fund (Keep Well Campaign):**

The Community Resilience Fund (CRF) is a national and local resilience fund combining health advice and ideas across Government Agencies, local authorities, national and local delivery partners and key stakeholders.

Fingal County Council received funds of €126,079. The CRF empowered community members and groups to stay well during the Covid-19 pandemic through the four themes, including Keeping Active, Staying Connected, Switching Off and Being Creative.





# SECTION 2

# Fingal Local Economic & Community Plan 2016-2021

## SECTION 2

# Fingal Local Economic & Community Plan 2016-2021

**The purpose of Local Economic & Community Plan is to set out the objectives and actions needed to promote and support the economic development of the relevant local authority area.**

The LCDC has a key role arranging for the implementation of the community elements of the LECP as well as reviewing the economic elements of the plan. The LECP provides a framework for strategic and operational plans in the county. The objectives and actions of SICAP & the LEADER programmes are closely aligned in the high level goals and objectives as set out in the Fingal LECP.

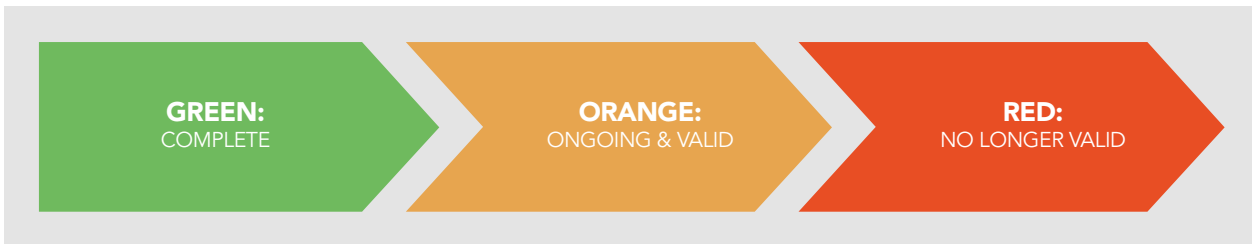
The Local Government Reform Act 2014 provides for the development of a 6-year integrated Local Economic and Community Plan to promote and support the economic and social development of the local authority area. Fingal LECP recognises that local and community development interventions need to support economic activity from the ground up, while helping to combat social exclusion and poverty, through targeted interventions to improve education, training and employment opportunities within disadvantaged or marginalised communities.



**The objectives and actions of SICAP & the LEADER programmes are closely aligned in the high level goals and objectives as set out in the Fingal LECP**



In May 2018 a workshop was held to review the Local Economic and Community Plan 2016-2021. All 115 LECP actions were reviewed using a traffic light system.



The LECP is under continuous review. Towards the end of the current LECP the following areas were considered to be significant going forward.







# SECTION 3

# Social Inclusion & Community Activation Programme 2018-2022



Social Inclusion & Community Activation Programme

# SECTION 3

## Social Inclusion & Community Activation Programme 2019 & 2020

**The Social Inclusion & Community Activation Programme (SICAP) is a key intervention for harder to reach groups and individuals.**

Delivery is being overseen and managed by Fingal LCDC. SICAP aims to address poverty, long term unemployment and social exclusion through local engagement and partnership between disadvantaged individuals, community organisations and public sector agencies. The budget for SICAP in Fingal in 2019 & 2020 was €1,246,141 per year for which a contribution comes from the European Social Fund (ESF) Programme for Employability, Inclusion and Learning (PEIL). The Programme Implementer, Empower, achieved its

two key performance indicators (KPI's) for 2019 (see table 1 below) and ensured that the programme and services were delivered within the financial parameters approved by the LCDC.

The Horizontal Themes of SICAP are Equality, Community Development and Collaboration. These themes are fundamental to Fingal LCDC and Empowers' values and are evident through the strategic reviews, programme planning and daily delivery.

### 2019

Table 1

2019 SICAP – 2 Key Performance Indicators (KPIs)				
<b>KPI 1</b>	COMMUNITY GROUPS	TARGETS 50	ACTUALS 50	100%
<b>KPI 2</b>	INDIVIDUAL BENEFICIARIES	TARGET 761	ACTUALS 894	117%

### Goal 1

#### LOCAL COMMUNITY GROUPS

Empower worked with 50 local community groups who have a social-inclusion ethos. The number and type of intervention varied depending on the level of need. The strategy is to provide intense, targeted supports to the groups.

Migrant workers, asylum seekers and refugees constituted 34% of the SICAP caseload in Fingal. Limited English language comprehension, poor written skills, a lack of work experience, irregular employment history, or qualifications from their country of birth not being recognised are barriers for many of them. In addition, some undoubtedly encounter discrimination in accessing the labour market. Many of the caseload live in 'jobless households.

23% of the local community groups were newly registered. Empower is continuing to build the capacity of pre-development and new groups located within disadvantaged areas, which are in turn supporting SICAP target groups.



**Community Groups** Targets 50 - Actuals 50

**100%**

## Goal 2 INDIVIDUALS

### Targeted Engagement

In 2019 Empower, collaborated closely with other agencies, particularly DEASP, to identify specific cohorts within SICAP target groups. This include targeted direct mail invites for unemployed young people, women returners and people from jobless households.

### Emerging Need Children In Homelessness

SICAP staff identified the pertinent recommendations of the *Home Works – A Study on the Educational Needs of Children Experiencing Homelessness and Living in Emergency Accommodation* report. This included establishing a multi-agency task group; support schools to cater for the educational needs of homeless children; develop a homework club which provides safety, routine and predictability; provide financial supports to allow homeless children access school and other services; and provide supports to address food poverty.

32 children from 11 families are provided with supports to allow children to access school. 10 children attend the homework club twice weekly, while 30 families avail of weekly food parcels.



**Individual Beneficiaries**

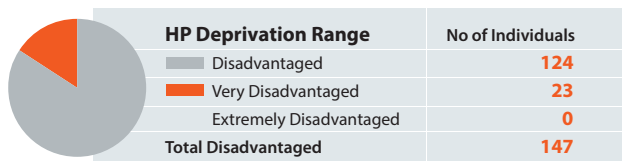
Targets 761 - Actuals 894

**117%**

### SICAP Supports

147 individuals or 19% of the caseload, living in 'disadvantaged or very disadvantaged areas' were supported in 2019 surpassing the 17% target set by Fingal LCDC. A further 221 people who received supports live in areas designated as 'marginally below average'. The vast majority of the SICAP target groups live in neighbourhoods outside of 'disadvantaged estates' in the RAPID boundaries (see map) as discussed in previous years with the Fingal LCDC. The National Institute of Research and Spatial Analysis geo-coded the addresses of persons in receipt of rent supplements across

Fingal. This demonstrated that the vast majority of these individuals lived outside of RAPID areas. Balbriggan Urban and Rural EDs have the highest percentages of persons living in private rented units in receipt of rent supplements, yet none of these estates fall within the RAPID area boundaries.





Social Inclusion & Community Activation Programme

# 2019 #SICAP

Providing the building blocks for local and community development in Ireland

## WHAT WE ACHIEVED!



**894 PEOPLE**  
ACROSS FINGAL WERE ASSISTED ON A 1-TO-1 BASIS

**65%**  
WERE UNEMPLOYED



**35%**  
WERE FROM A JOBLESS HOUSEHOLD



**50**

LOCAL COMMUNITY GROUPS RECEIVED ASSISTANCE



**18**

GROUPS SUPPORTED INTO DECISION-MAKING STRUCTURES



**578** PEOPLE PARTICIPATED IN FREE LIFE-LONG LEARNING COURSES




**1,491**

**EDUCATION AND PERSONAL DEVELOPMENT SUPPORTS WERE EXTENDED TO CHILDREN & FAMILIES**

**329** people



**received employment & job training supports**



**85** people set up a **NEW BUSINESS**

**WHICH CREATED 86 FULL-TIME JOBS**

**135**

**YOUNG PEOPLE not in work helped by education & job initiatives**






The Social Inclusion and Community Activation Programme (SICAP) 2018-2022 is funded by the Irish Government through the Department of Rural and Community Development and co-funded by the European Social Fund under the Programme for Employability, Inclusion and Learning (PEIL) 2014-2020

## SICAP 2020

### INTRODUCTION

Since the first Covid-19 cases were confirmed in Ireland at the start of 2020, it was clear that the pandemic was impacting the whole population, but it had an even worse effect on the most vulnerable SICAP groups. As well as devastating health consequences, the Covid-19 pandemic had major implications on the way people live and work, affecting physical and mental well-being in a profound way. SICAP target groups reported experiencing a range of challenges including job losses, food poverty, digital poverty, fuel poverty and higher levels of anxiety.

Low income families were particularly vulnerable as many of whom work in multiple low-paid jobs, such as the care sector and food production section, both of which were disproportionately affected by the pandemic. Many individuals in the retail sector were made redundant and were uncertain on how to register for welfare payments.

Traveller and Roma communities were also highly affected by the pandemic due to their reliance on the extended family and overcrowded living conditions. High positivity rates were experienced by both communities. Many non-English speakers were unable to understand what they were hearing on the news and were vulnerable to misinformation and scaremongering.



Joe O'Brien TD, Minister of State, Department of Rural and Community Development, at the launch of the SICAP Annual Report 2019.

## CHANGING NEEDS

The SICAP provider staff contacted SICAP participants on multiple occasions using a variety of different methods. This included phone, ZOOM, house visits in gardens, onsite visits with protective measures in place, and meeting target groups in public spaces such as parks.

It was immediately apparent that service-user's needs and priorities had changed from learning and labour market supports to personal wellbeing. These supports ranged from immediate need to respond to food and fuel poverty, to addressing the increasing reliance on digital connectivity, as well as reassurance and accurate information on Covid-19, and a replacement for social interaction.



## DIGITAL POVERTY

It was identified that digital poverty was prevalent amongst vulnerable children and families as work and school moved remotely. This included a lack of adequate digital devices, internet access and a lack of capacity to work remotely. Digital exclusion is a hidden barrier which causes inequality around the access to education and other vital public and social services that SICAP target groups are reliant on. Research has shown (Burrantes, 2010) that the level of an individual's digital connectivity has a direct correlation to levels of prosperity and poverty. As many educational and social supports moved online during the pandemic, there has been an increased digital divide for children and young people from disadvantaged families.

Empower introduced a digital inclusion initiative called 'Connect & Include' to combat the effects of digital exclusion for these hard-to-reach target groups. This initiative formed part of the Fingal COVID-19 Response Plan and was established only a fortnight after the pandemic began. Empower collaborated with local Community Groups, Family Support Agencies, disability services and DEIS schools in order to identify the families who were in most need of digital connection and support during the crisis. Through SICAP, the scheme focused on providing people with technology as well as the necessary training to teach them how to use it.



## COMMUNITY RESPONSE FORUM

SICAP was one of the key elements of the Fingal Covid-19 Community Response Forum (CCRF). The role of the forum is to ensure that there is a coordinated community response and to enable all voluntary and statutory agencies to collaborate in support of our communities. The forum is made up of over a dozen agencies and organisations.

A dedicated community support helpline and email address were established in Fingal to assist at-risk members of the public in accessing non-emergency and non-medical supports and advice during the current public health emergency. The helpline is focused primarily on ensuring that vulnerable members of the community or those living alone can access deliveries of groceries, medicine and fuel. The Community Forum ensured that the wide variety of groups working across the County assisting those in need are doing so in an organized, collaborative and targeted way. Empower is responsible for coordinating the food poverty response for Fingal Community Response Forum and SICAP.

SICAP staff worked with Manouche National Roma Centre to establish a Roma food bank. This food bank focused mainly on the Roma community in Balbriggan and Blanchardstown. It also provided food to families in Fingal. More than 50 families received food parcels delivered through SICAP. Each parcel contained an HSE Covid-19 leaflet translated into Roma. Some of these families also received resource packs with cleaning and sanitary materials, and an activity pack with games colouring books and pens for children. These supports were essential for the psychological and mental well-being of the Roma community.

SICAP also worked to respond to the needs of the Balbriggan Travellers Women’s Group. Covid-19 resource packs were provided to 51 families living in Balbriggan, Skerries and Swords. Travellers were unable to source cleansing products in local shops and had an increased risk of contracting the virus due to the close living quarters on sites. To alleviate this, Empower organised the purchase of these materials from wholesalers and the delivery of packs which included Easter eggs, colouring books, pencils and crayons for children.



### During 2020 Empower also achieved their KPI’s and fulfilled the targets and requirements of SICAP

2019 SICAP – 2 Key Performance Indicators (KPIs)				
KPI 1	COMMUNITY GROUPS	TARGETS 50	ACTUALS 50	100%
KPI 2	INDIVIDUAL BENEFICIARIES	TARGET 761	ACTUALS 894	117%
KPI 2	INDIVIDUALS LIVING IN AREAS OF DISADVANTAGE	TARGET 17%	ACTUALS 22.86%	



# SICAP 2020

## Key Achievements



# 50

LCGs assisted by SICAP (KPI 1)





 <p><b>14 Social Enterprises</b> received supports</p>	 <p><b>11 LDC Collaborations</b> received supports</p>
--	---

# 761

Individuals assisted by SICAP (KPI 2)



<p><b>166 people completed a lifelong learning course</b></p> 	<p><b>82 people got jobs</b> <b>108 people set up their own business</b></p> 
---	--





# SECTION 4

# Dublin Rural LEADER

# 2014-2020



The European Agricultural Fund  
for Rural Development:  
Europe investing in rural areas



Dublin Rural  
**LEADER**  
Growth, Sustainability & Inclusion

## SECTION 4

# The Dublin Rural Leader Local Action Group

**The Dublin Rural Local Action Group (LAG) has been established to deliver the LEADER element of the Rural Development Programme (RDP) for the period 2014–2020 in the Dublin Rural Region. The LEADER Programme aims to improve the quality of life in rural areas and to encourage diversification of economic activity in rural areas.**



*Back Row: Laurence Ward, Cormac Shaw, Alice Davis, Eilish Harrington, Tom Kivlehan, Colm Ward, Máire O'Brien, Adeline O'Brien.  
Front Row: Sinead McKenna, Declan Ryan, Pat O'Connor, Emer O'Gorman, Tony Murphy.*

The allocated fund represents €6.37 million, and of this €4.74 million was available for local projects in the region.

There are 17 nominated members of the LAG, all of whom have a significant body of experience and expertise across the social, community, economic and environment sectors. The LAG is responsible for designing and implementing the LEADER Local Development Strategy (LDS), making decisions on projects funded through the LDS and managing funding allocated to the LDS in the Dublin rural areas. Fingal County Council is the Lead Financial Partner for the LAG in the operation of the Local Development Strategy.



### Approved Projects 2019-2020

The full allocated project budget for the Dublin Rural Leader area was granted to approved projects by 31st December, 2020. In 2020 alone, there was an increase in large projects with both Lusk Community Cultural Centre and Glenasmole Community Centre receiving grants of €500,000 each. These two large projects will create multi-purpose spaces for the two communities and improve access to social, recreational, educational and economic supports in these areas.



Another notable project was the Lambay Island Distillery which was approved for a grant of €192,283.50. The aim of the project is to establish a micro-distillery on Lambay Island which lies in the Irish Sea off the coast of North County Dublin. The distillery is to run off its own independent energy supply to produce pot still whiskey.



A geographical breakdown of approved projects in 2020 is seen in table below.



Katy Hunt Cottage Lusk - Before and after

### Leader Impact Campaign 2020

The National Rural Network launched their LEADER impact campaign in September 2020 asking those who had received LEADER funding to explain how the funding had made an impact through the creation of a short video. The winners were chosen through a public vote with over 6000 votes cast in the 4-week period. The Ballyboughal Hedgerow Society won under the theme Rural Environment for their Environmental Workshop Series. This project includes workshops on subjects such as bush craft, biodiversity, foraging, hedge laying and walks to foster rural tourism in the Ballyboughal region.



## Dublin Rural LEADER LOCAL ACTION GROUP (LAG) Members 2019 & 2020

NAME	CATEGORY	ORGANISATION
*Tony Murphy	Local Authority Member	Fingal County Council
Cathal Boland	Local Authority Member	Fingal County Council
Emer O’Gorman	Local Authority Official, Chief Executive’s nominee	Fingal County Council
Oisín Geoghegan	Local Authority Official, Head of Local Enterprise Office	Fingal County Council
Pat O’Connor	State Agency, Higher Education Institute	Technological University Dublin
Colm Ward	Local Authority Official, Chief Executive’s Nominee	South Dublin County Council
**Paula Donovan	Local Authority Member	South Dublin County Council
David McManus	Local Authority Member	South Dublin County Council
***Peter O’Brien	Local Authority Member	Dun Laoghaire/Rathdown County Council
Lettie McCarthy	Local Authority Member	Dun Laoghaire/Rathdown County Council
Alice Davis	Social Inclusion Interest	Fingal Public Participation Network
Maire O’Brien	Environmental Interest	Fingal Public Participation Network
Eilish Harrington	Local Development	Fingal Leader Partnership
Laurence Ward	Farming and Agriculture	The Irish Farmers Association
Adeline O’Brien	Local Development	Empower
Tricia Nolan	Community & Voluntary Interest	P.P.N. South Dublin LCDC
Justin Byrne	Environmental Interest	P.P.N. South Dublin LCDC
Mary Corcoran	Community Interest	South Dublin LCDC
Cormac Shaw	Local Development	Dun Laoghaire-Rathdown LCDC
****Tom Kivlehan	Environment Interest	Dun Laoghaire- Rathdown LCDC
Mark Fox	Environment Interest	Dun Laoghaire Rathdown LCDC

\*Tony Murphy replaced by Cathal Boland

\*\*Paula Donovan replaced by David McManus

\*\*\*Peter O’Brien replaced by Lettie McCarthy

\*\*\*\*Tom Kivlehan replaced by Mark Fox

PUBLIC (STATUTORY)

PRIVATE (NON-STATUTORY)

**Comhairle Contae  
Fhine Gall**  
Fingal County  
Council



Fingal County Council  
Economic Enterprise & Tourism Development,  
c/o Fingal LCDC, County Hall  
Main Street, Swords,  
Co. Dublin K67 X8Y2  
T: (01) 8905000  
E. [lcldc@fingal.ie](mailto:lcldc@fingal.ie)