

**Comhairle Contae Fhine Gall**  
Fingal County Council



# Chief Executive's Management Report

8<sup>th</sup> of May, 2020

# CHIEF EXECUTIVE'S MANAGEMENT REPORT – MAY 2020

## Contents

### Corporate Affairs and Governance (CAG)

Governance and Oversight Meetings  
Major Emergency Management –  
Response to Covid 19  
Human Resources  
Customer Services  
Facilities Management  
Information Technology  
Communications

### Economic, Enterprise and Tourism

#### Development (EETD)

##### **Tourism Development**

Events  
Tourism  
Heritage Properties

##### **Local Enterprise Development**

##### **Economic Development**

Balbriggan Socio-Economic Strategy  
LEADER Programme  
Local Community Development Committee  
Enterprise Centres

#### Operations (OPS)

Covid-19  
Walk Bike Fingal  
Fleet Management & Plant Hire Unit  
Public Lighting  
Traffic Operations Unit  
Road Safety Section  
Bridge Rehabilitation Project  
General Operations  
Flowers in Fingal

#### Planning and Strategic Infrastructure (PSI)

Planning Applications  
Planning Decisions  
Building Control  
Donabate Urban Framework Plan  
Fingal Development Plan Variation no. 2  
Fingal Development Plan Variation no. 3  
Fingal Development Plan Review  
Forest of Fingal - Tree Strategy  
Fingal Play Policy  
Installation of additional 'SeaBees' in Portrane  
Transportation Planning and Projects

Rathbeale Road  
Broadmeadow Way  
Hole in the Wall Road Scheme  
Donabate Distributor Road  
Turvey Avenue Footpath Enhancement  
Portrane Road Footpath Enhancement  
Hearse Road Bend Realignment  
Park Road  
Churchfields Link Road  
R132 Junctions  
Development Management/Forward Planning  
(Water Services)  
Building Control/Taking in Charge  
Gardening for Biodiversity  
Remains in River Valley Park  
Heritage Signage

### Housing and Community, Culture & Sports and Libraries (H+CCS+L)

#### **Housing**

#### **Community, Culture & Sports**

Community Development Office  
Sports Office  
Arts Office

#### **Libraries**

### Environment & Climate Action (ECA)

#### **Environment & Climate Action**

Environmental Awareness  
Climate Action  
Circular Economy  
Water Quality Protection  
Bathing Water Quality  
Balleally Landfill/Rogerstown Park  
Litter Management  
Dog Warden Service  
Waste Enforcement

#### **Water Services**

Operations

#### Finance

Financial Reports

# CORPORATE AFFAIRS AND GOVERNANCE (CAG)

## Contents

Governance and Oversight Meetings  
Major Emergency Management –  
Response to Covid 19  
Human Resources  
Customer Services  
Facilities Management  
Information Technology  
Communications

The Corporate Services, Human Resources and Information Technology Departments continue to play a vital role in ensuring that the organisation can respond to the requirements of the organisation as it moves to implement the Governments roadmap for reopening society and business in 5 different phases.

### Governance and Oversight Meetings

A virtual governance and oversight meeting for all Members of the Council is due to take place on Monday, 11<sup>th</sup> of May using the Microsoft Teams Platform. In this regard a protocol has been agreed based on current advice and is subject to review as meetings are held or advice changes.

The meeting is for the purpose of governance and oversight and no decisions will be taken. Members will be invited to make submissions in advance of the presentations being made so that they may be addressed during the course of the presentation. It is also intended to arrange for a governance and oversight meeting for the Members of each of the Area Committees during the month of May also using the Microsoft Teams Platform.

### Corporate Services - Major Emergency Management - Response to Covid 19



The **Major Emergency Planning** Structures in place within the Council continue to provide the framework within which the Council's Departments have been able to adapt and update business continuity plans for what is an unprecedented scenario.

**Business Continuity Plans** have been used to prioritise critical services, to channel and re-assign resources and ensure continuity of service for the public. This process has also enabled management to ensure exposure of staff is minimised through significant levels of remote-working and facilitating social distancing within the organisation.

The **Major Emergency Eastern Region Steering Group**, including representatives from the management of Dublin, Wicklow and Kildare Local Authorities, the Fire Services of those Local Authorities, An Garda Síochána and the HSE, continue to meet regularly with a view to co-ordinating services, activities and to ensure that

activities across the region are informed by and in line with the national measures. The group is Chaired by AnnMarie Farrelly, Chief Executive and is serviced by Fingal's Corporate Services Department.

The Chairs of the Regional Groups represent the Regions at the **National Steering Group** that ensures that the decisions of Government and best practice approaches are implemented and informed by what is taking place at local level.

Locally, Fingal County Council's **Crisis Management Team** met on a daily basis throughout the month of April and otherwise as required. The management team will meet 3 times a week for the month of May.

Senior Staff are updated daily and are briefed at weekly meetings.

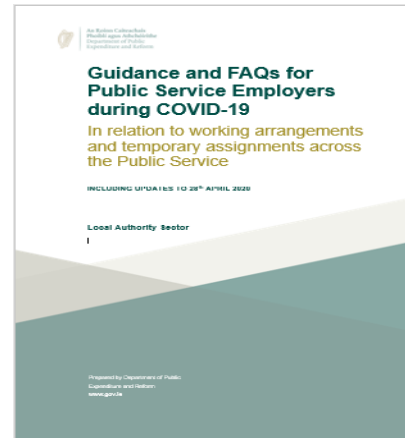
Briefings with the **Corporate Policy Group** are scheduled weekly and otherwise as required and Members are given weekly updates by the Mayor and Chief Executive and otherwise as necessary.

## HUMAN RESOURCES

A variety of **working arrangements** including working from home, shift arrangements (early morning starts, late evening shifts), weekend working and staggered rosters continue to be available to staff with a view to ensuring that social distancing and national health protection guidance can be followed. Daily attendance in the workplace has been reduced to approximately 15% of staff.

Staff are kept up to date on relevant Government directives and are provided with useful information through text alerts and a dedicated staff information webpage.

The HR Department is co-ordinating the **Public Service Temporary Assignment Scheme** under which staff deemed as available for reassignment are directed to register for potential temporary re-assignment to other parts of the public sector. 11 Fingal employees have been contacted to date.



Salary and wages related payments continue to be paid without interruption.

The close working relationships with Corporate Services and IT Departments and the strong relationships with Unions locally has meant that the transition to new working arrangements and implementation of the required measures, while challenging, progressed effectively.

The co-ordination of responses and management of human resource issues through relationships with our colleagues in neighbouring Local Authorities, the Local Government Management Agency, the Departments of Housing, Planning & Local Government and Public Expenditure and Reform have been critical to the response

## Customer Services

Following the closure of the offices to the public, the Council remained open for business and the Customer Care Agents continued to resolve queries as the first point of contact by phone and email. By Easter arrangements had been put in place by the IT Department to have the Council's phone system moved to the Cloud. This enabled the Customer Care Unit to be set up working from home and continue to keep the Council accessible to the public.

The Customer Service Centre staff have also taken on the re-direction of all phone lines through the call centre allowing back-office staff to move to remote-working more easily.

The Community Call helpline is routed through this same call centre with expanded hours of operation from 8:00am to 8:00pm, 7 days a week.



Need a grocery order collected?  
Feeling vulnerable and isolated?  
Need a prescription picked up?  
Feeling life's a struggle at the moment?  
Or just need somebody to talk to?

**We're here to help**

**FREEPHONE: 1-800-459 059**  
**PHONE: 01-890 5000**  
**EMAIL: covidsupport@fingal.ie**

**Call us any day - 8am to 8pm**

#CommunityCall #FingalCommunityResponse

## Facilities Management

Our Building Facilities team, along with the Architects Department and Health & Safety unit, are examining all our buildings to see what needs to be done for them to be used safely by staff and public alike as we prepare to transition from a crisis management situation to normality whilst continuing to adhere to the public health guidelines in relation to COVID-19. Increased cleaning programmes continue to be implemented in Corporate Buildings to reflect current public health crisis demands. Arrangements continue for staff access to buildings from 6am to midnight to ensure that the various flexible working arrangements that have been put in place for staff can function.

## Information Technology

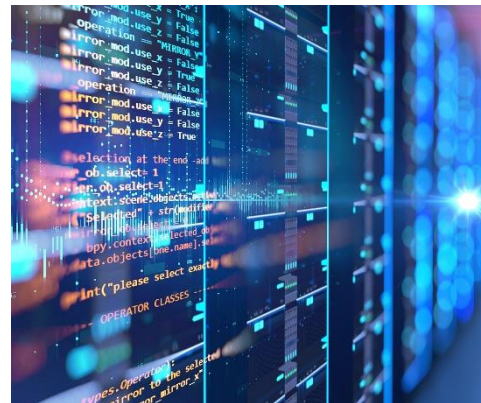
### Information Technology

The Information Technology Department continues to prioritise remote access to Council systems for staff working from home in addition to the on-going maintenance of existing system and implementation of new systems

### Laptops

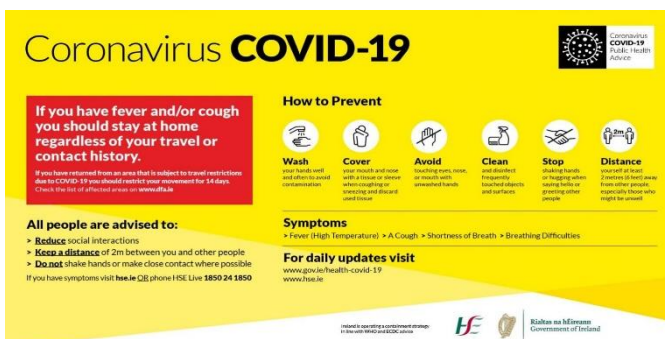
During the month of April, the rollout of laptops to staff continued and 60% of Council computers are now laptops. This work will continue in the coming month to further increase the number of laptop computers and facilitate additional digital home working.

## Infrastructure



The following upgrades were completed in the month of April –

- Migration of the connection between the Swords and Blanchardstown offices was completed with a resulting tenfold increase in capacity to 10 Gb/s
- Migration of external connectivity was completed with a resulting tenfold increase in capacity to 1 Gb/s
- Installation of a dedicated connection to Government Networks to facilitate connectivity to Cloud services



**Coronavirus COVID-19**

**If you have fever and/or cough you should stay at home regardless of your travel or contact history.**

**How to Prevent**

- Wash** your hands well and often with soap and water for at least 20 seconds
- Cover** your mouth and nose with a tissue or elbow when coughing or sneezing and discard used tissue
- Avoid** touching eyes, nose, or mouth with unclean hands
- Clean** and disinfect frequently touched objects and surfaces
- Stop** shaking hands or hugging when staying home or avoiding other people
- Distance** yourself at least 2 metres (6 feet) from other people, especially those who might be unwell

**All people are advised to:**

- > Reduce social interactions
- > **Keep a distance** of 2m between you and other people
- > **Do not** shake hands or make close contact where possible

**Symptoms**

> Fever (High Temperature) > A Cough > Shortness of Breath > Breathing Difficulties

**For daily updates visit**  
[www.gov.ie/health-covid-19](http://www.gov.ie/health-covid-19)  
[www.hse.ie](http://www.hse.ie)

© 2020. All rights reserved. A Government of Ireland initiative in partnership with the Department of Health and the Department of the Environment, Climate and Communications.

**Riann na Míreann**  
Government of Ireland



## Digital Workplace

The next phase of rollout of Office365 and Teams to staff has commenced which will further enhance the Council's remote working and collaboration capability.

Work has commenced on the implementation of Sharepoint Online document management systems for Corporate Affairs & Governance and Housing Departments.

## Digital Fingal

After some months of beta testing, the new mobile application called Fingal Voices is now publicly available on app stores. The application enables Fingal citizens to participate in decision making about the future of their place in an innovative and fun way. The App enables people to participate in surveys, competitions and consultations directly on their mobile phones and their contributions will be rewarded with points which can be then converted into vouchers and gifts from various local partners.

The App is an additional service which complements but does not replace the existing traditional consultation mechanisms through Fingal's Consultation Portal.



In addition to the basic consultation functionalities, the App also has a number of innovative features –

- Sharing opinions and voting on the suggestions of others, rating proposals and commenting
- Suggesting improvements and ideas related to consultations
- Getting informed about local news and events linked to the ongoing public consultation topics
- Being rewarded for participation (consultations, events, surveys) with points convertible for small gifts or vouchers in a local network of partners

## COMMUNICATIONS

### Fingal News



A special edition of Fingal News which focused on the Community Call efforts across Fingal was published. As well as being available digitally, 3,000 copies were printed and distributed through the Community Call Forum to some of those cocooning with the assistance of the GAA, Empower, An Garda Síochána, and Fingal Libraries.

### Community Call leaflet

A Community Call Helpline Information Leaflet was designed and distributed to households across Fingal.

## Operational Transformation

The Customer Care Unit and the Community Services Department along with the GAA facilitated the filming of a piece for the RTE 1 television programme Operation Transformation programme on how the Community Call process works.

## Graphics



Graphics for social media continued to be a focus for the Communications Department to assist the messaging from various departments on a range of issues such as Dog Fouling, Litter and Traffic Calming Public Consultation.

## Videos



Among the videos produced during the month by the Communications Unit were weekly Message from the Mayor, as well as the announcement of the results of Libraries' Poetry Day competition. One of the most popular videos of the month was a colourful view of Ruigrok Tulip Farm overlooking Rogerstown Estuary.

## Social Media

Social media channels continue to attract record numbers with Twitter receiving 1.3m impressions during April with a 1.8 per cent engagement rate while our Facebook posts reached 750,000 people. All our social media channels saw their number of followers rise and our Instagram account has seen a 50 per cent rise in its number of followers since the start of the year.





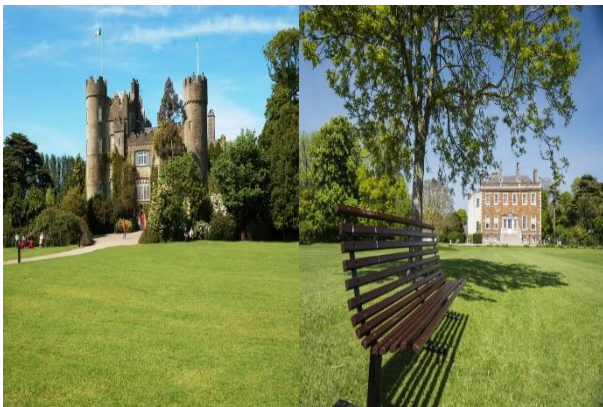
## HERITAGE PROPERTIES

### Heritage Buildings illuminated for #shine your light



On Saturday 11<sup>th</sup> April, Swords Castle, Bremore Castle, Ardgillan Castle and the Casino in Malahide were lit up as part of the national initiative to #ShineYourLight for all the sick, frontline workers and anyone affected by COVID-19.

## CLOSURE OF HERITAGE PROPERTIES



In line with current Government restrictions as a result of Covid 19 all heritage properties, including their associated cafés remain closed to the public.

In the meantime, the following works are being progressed across the properties during this period:

- **Malahide Casino**- A new Museum guidebook for the visitor is under development
- **Newbridge House**- The tour of Newbridge House is being enhanced with the refurbishment of the basement rooms following a successful grant application to Fáilte Ireland by Shannon Heritage.
- **Skerries Mills** - Consultation with the Planning Department on the Red Barn Development works are due to commence with a view to bringing it before the Council for Part VIII approval in Q3 2020.
- **Ardgillan Castle** - discussions are ongoing with the Council's Digital Strategy Manager with regard to the installation of a public broadband community hub at Ardgillan.

## TOURISM

### Food Tourism

[Coastandfields.ie](https://Coastandfields.ie) - content creation and content management is ongoing.

Promotion on social media of Fingal food producers and restaurants offering delivery during lockdown is taking place.

### Liaison with Fáilte Ireland

- Communicating local concerns and any supports Fáilte Ireland could provide going forward
- Fingal Food Project and future supports which may be available from the Food Tourism team

- Recovery post lockdown - focus on the promotion of Taste the Island to the domestic market. FLAG application submitted to promote Fingal Coastal Villages.

## Local Tourism Development Groups

Keeping updated re their concerns which largely include sustaining businesses and jobs and plans for recovery post lockdown.

## LOCAL ENTERPRISE DEVELOPMENT

### Local Enterprise Office Fingal



LEO Fingal continues to respond decisively to the COVID-19 emergency through the implementation of urgent and necessary actions, to support Fingal SME and Micro Enterprise.



*Chair of the Local Enterprise Office Network and Head of Enterprise in Fingal, Oisín Geoghegan joined Minister for Business, Enterprise and Innovation, Heather Humphreys TD, and Chief Executive Officer of Enterprise Ireland, Julie Sinnamon to announce a wide range of supports to assist small business during the current crisis at a press conference on Wednesday 8<sup>th</sup> April 2020.*

## Trading Online Voucher Scheme Expansion and information webinars



Minister Humphreys announced a large expansion to the TOV scheme. The match-funding element was temporarily reduced **from 50% to 10%**. In addition, previous recipients are now allowed to apply for a 2nd TOV to upgrade their eCommerce activities.

The first LEO Fingal TOV Webinar happened on Thursday 2nd April. Due to increased demands, the TOV webinars were opened to all LEOs nationwide. The first of the national webinars occurred on Tuesday the 28th April with 478 participants, 170 came from Fingal.

Four more TOV webinars have been scheduled for the following dates in May:

- Friday 1<sup>st</sup> May 2020
- Tuesday 5<sup>th</sup> May 2020
- Thursday 7<sup>th</sup> May 2020
- Friday 8<sup>th</sup> May 2020

To date, LEO Fingal has approved 50 TOV applications with a further 37 under assessment. The TOV programme is funded by DCCAE, as part of the National Digital Strategy, to support local and established small businesses to enhance their online offering.

## Business Continuity Voucher



Businesses seeking support to assist with business continuity connected to the COVID-19 outbreak, may apply for a Business Continuity Voucher (BCV). The voucher is valued at €2,500 and can be used by companies (up to 50 employees) and sole traders to develop short- and long-term strategies to respond to the COVID-19 pandemic. The goal is to help business owners make informed decisions about immediate measures and remedial actions to protect staff and sales.

To date, LEO Fingal has approved 109 BCV applications to Fingal Businesses.

## COVID-19 Business Loan



Minister Humphreys also announced a further reduction of the interest rate to the MFI COVID-19 loans. These are loans of up to €50,000 with a six-month (0% interest) moratorium on repayments. Fingal business are encouraged to apply through LEO Fingal to avail of a **4.5%** APR applicable after the moratorium, as well as help with the application process.

## New FEWN online Networking events



LEO Fingal is running a series of weekly online networking events, through the Fingal Enterprising Women Network, titled "In Conversation with..." Each event invites a different expert to speak about a relevant topic to women in business, Fingal Enterprising Women Network provides learning and networking opportunities for women in business and enterprise.

## LEO Fingal COVID-19 Training Update

LEO Fingal continues its delivery of programmes to support SME and Micro Enterprise clients through the current challenges. Programmes currently on offer include:

- Leading Your Business Through COVID-19
- Cash Management in a Crisis
- Remote Working & Productivity
- Selling Online/Moving Your Business Online
- LEAN Workplace Organisation
- Online HR and Management
- Retail workshops

The demand for these courses has been substantial with all scheduled courses booking out rapidly. Additional programmes continue to be organised to meet the demand.

## Business Clinics and Mentoring

Clinics and mentoring continue to be offered over the phone and online to help individuals respond to the disruptive impact on business due to COVID-19.



In April 2020, 10 business clinic days were held, offering advice to 75 Fingal businesses. In addition, 32 businesses were assigned a Business mentor.

### Lunch and Learn Series



Each Thursday lunchtime, the LEOs host an interview with experts giving advice on how to adapt business practices to the current crisis.

(<https://www.facebook.com/LocalEnterpriseOffices/>)

### Fingal Student Enterprise Programme (SEP)

Despite the cancellation of the SEP final at the National Sports Campus due to the COVID-19 emergency, the judging process went ahead remotely. The following student enterprises will now represent Fingal at the remote National SEP Final in May.

- **Junior Category** – “Campo de Fiori” (Loreto School in Balbriggan) which produces a range of flower decorations for various occasions.
- **Intermediate Category** – “Candle Holders Out Of Sustainable Equipment (C.H.O.O.S.E)” (Edmund Rice College in Blanchardstown).
- **Senior Category:** - “Globenomics” (Castleknock Community College), “”, an innovative card game which gives an in-depth insight into economics for students of the new Junior Certificate programme.

This year, students in the Senior category had the opportunity to enter an additional “Most Creative

Business Idea” section. Under the theme “Go Green: Be Sustainable” students were invited to send in a video of their most innovative ideas, without having to produce a product or service. Donabate Community College came up with ‘Recycle’, an innovative idea to generate energy using a static bicycle.

### Local Enterprise Office Response Website



For businesses currently affected or who anticipate being affected by COVID-19, the Local Enterprise Office has compiled a useful guide on the supports and advice available.

The website is updated continuously with new developments, so Fingal clients are encouraged to check back regularly.

([www.localenterprise.ie/Response](http://www.localenterprise.ie/Response))

### ECONOMIC DEVELOPMENT

#### Balbriggan Socio Economic Strategy

The implementation of the Our Balbriggan Rejuvenation Strategy 2019 – 2025 is progressing across its four pillars: Local Economy, Public Realm, Education, Skills & Employment & Community Affairs & Integration and encompasses 93 actions.

Staff are liaising directly with the four pillar chairs: Local Economy, Public Realm, Education, Skills & Employment & Community Affairs & Integration to ascertain new and emerging needs in light of the public health crisis and to formulate any new responses or adjustments arising from these.

The Balbriggan Leadership group have scheduled a meeting for the 20th May 2020 and will consider arrangements for the one-year anniversary of the Rejuvenation Plan's launch in June 2020. It is anticipated that the anniversary will be marked by a series of virtual public engagement events and communication around the progress of the Plan.

The majority of the actions described in the "20 things in the first 12 months" have been completed or have made significant progress. A leaflet outlining the progress of these actions and the high-level plans moving forward will be delivered to every household in Balbriggan in June 2020 as part of communications around the one-year anniversary of the Plan.

All published research, plans and public engagement results are available at [www.balbriggan.ie](http://www.balbriggan.ie) regular updates on the plans progress are available through @ourbalbriggan social media channels.



## Property & Industrial Development

Both the Property Services and the Industrial Development Sections are working to maintain services under current restrictions while adhering to social distancing requirements. Staff in these Sections are primarily working remotely to progress property and industrial development

matters and are attending the office on a staggered basis and only as business requires. Telephones have been diverted to Council mobile phones where possible and staff remain available and contactable via email for any enquiries or matters arising.

## Local Development

### Fingal Local Community Development Committee

The Fingal LCDC continues to oversee and administer the key areas of LEADER and SICAP and the various Local Development and Community Development funding programmes under its remit. The LCDC is also represented on the Fingal Community Call Forum.

SICAP: A new SICAP Response Plan for COVID-19 has been agreed and is being implemented by Empower. The SICAP Programme is central in delivering a response to new challenges in the community. The process of reviewing the SICAP Budget will begin in May with a reallocation of resources to the actions of most need expected for the remainder of the year.

### LEADER Programme

The Fingal LEADER Programme continues to accelerate the funding of eligible projects in the administrative areas of Fingal, Dun Laoghaire Rathdown and South Dublin.

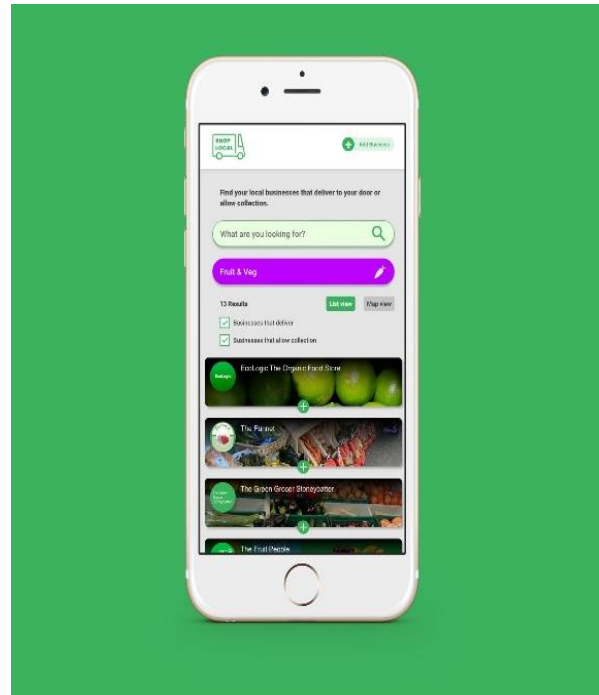
The most recent Dublin Rural LEADER Action Group meeting was held by remote conferencing on the 30th April 2020 where €1.72 million was approved for new projects in Rural Dublin. This is the highest amount ever approved at a single meeting. During 2019, over €1.5 million was approved for over 18 projects.



In the programme to date, 73 projects have been approved for funding. The pipeline of new projects to be brought to the LAG for consideration in the second quarter is strong. The Dublin Rural LEADER LAG is in the process of identifying funding within the LEADER Budget that can be allocated for COVID-19 Recovery Projects in the rural areas.

Fingal County Council continues to deliver the financial and administrative oversight responsibilities for the approval and drawdown of LEADER funded projects following the national transfer of the LEADER Article 48 Administrative Checks from Pobal to the Local Authority Sector. There has been no interruption to the delivery of the LEADER Programme or the Article 48 Checks as a result of COVID-19

**Social Enterprise Supports:** The Local Development Section is supporting the new shoplocal.irish website initiative, a social enterprise which provides an online service to the community highlighting businesses that provide delivery services locally.



## Enterprise Centres

Occupancy rates at the Council's three enterprise centres in April 2020 were Drinan 97%, BASE 91% and Beat 88%. The three Enterprise Centres currently support 69 businesses. All three centres have been closed with all centre staff now working remotely, and only accessing the buildings where necessary. All HSE Guidelines have been followed.

# OPERATIONS

## Contents

- Covid-19
- Walk Bike Fingal
- Fleet Management & Plant Hire Unit
- Public Lighting
- Traffic Operations Unit
- Road Safety Section
- Bridge Rehabilitation Project
- General Operations
- Flowers in Fingal

The Operations Department continue to provide essential services during the Covid 19 emergency. Current working arrangements have enabled us to ensure critical services continue to be provided to the public.

We continue to provide litter and cleansing services and the recycling centre at Coolmine has had a regular flow of vehicles.

However, we have also seen an increase in littering, especially dog fouling and fly tipping in certain areas.

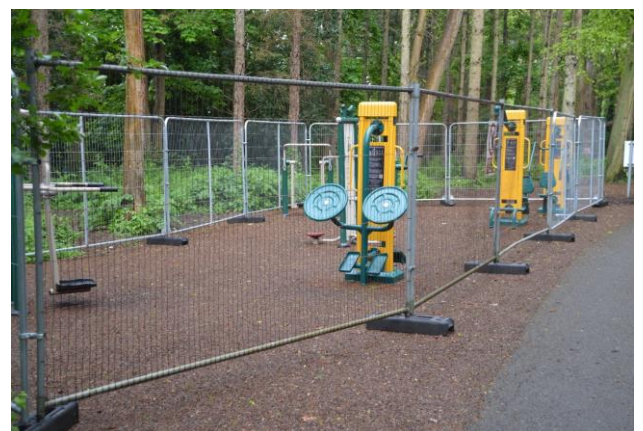
The Operations Crew continue to encourage the public to adhere to the social distancing of 2metres while they can still enjoy the amenities.

### COVID-19

Operations Department continued to implement communication to the citizens within the Parks in response to government measures to minimise the risk to COVID-19.



### Malahide Demesne Playground



### Adult Exercise Equipment – COVID-19 Prevention



## Fingal County Council

### 'Walk Bike Fingal!'

#### Plan for Social Distancing in the Public Realm

Fingal County Council acknowledges the changing needs of its communities during the Covid-19 pandemic by assessing and repurposing public road space to facilitate the increase in cyclists and pedestrians by giving them extra space to practice social distancing from each other.

In light of this and in response to requests, Fingal County Council Operations Department carried out an initial needs assessment with the aim of temporarily repurposing Fingal streets, roads and public realm spaces with the current needs of users in mind including those with prams and wheelchairs. Some people walking and exercising on busy and sometimes crowded footpaths are moving out into the road to preserve the required 2m social distance. Others, especially if walking with children are staying on the footpath but passing others at less than the 2m required distance and thereby risking infection rather than risking injury from vehicular traffic. Cyclists travelling on roads also need to preserve the 2m distance from each other. Both of these raise new road safety issues not experienced before to this extent.

With this plan, Fingal aims to provide residents with safe space to walk, run, exercise and travel by bike and adhere to the 2m rule. Fingal seeks to encourage physical activity at a safe social distance and thereby improving the physical and mental health of its citizens during this time of restricted movements. These temporary measures are being introduced by Fingal in consultation with Local Gardai.

Following initial assessment, Engineers have devised a phased plan for locations in Fingal towns and villages. These locations will have measures put in place to improve the social distancing in the public realm. Following monitoring of these initial locations, other areas will be assessed for the introduction of similar measures.

The measures put in place will be closely monitored by engineers and reviewed at intervals as the Government restrictions changes.

There are several classes of measures included in the Plan:

1. Removal of parking and loading bays to create / increase footpath widths
2. Consideration of temporary closure of currently under-used bus lanes to widen footpaths
3. Increasing footpath width temporarily using bollards and cones placed in the public roadway
4. Introduction of pedestrianised locations whilst maintaining motor vehicle access for deliveries and emergency responders
5. Introduction of one way systems, including the introduction of a temporary extra lane for walking and cycling where suitable
6. Reclassification of the modal hierarchy by the introduction of pedestrian and bike priority at pedestrian crossings by adjusting the lights sequence and timings and installation of signs indicating same to motorists
7. Installation of temporary cycle lanes to improve local connectivity between existing facilities such as greenways, existing unconnected cycle tracks, parks and open spaces.
8. Introduction of a network of calm, low-traffic residential streets
9. Implementation of temporary cycle lanes
10. Reallocation of traffic lanes for use by pedestrians and cyclists
11. Introduction of roadway queuing systems outside busy essential shops to reduce footpath congestion
12. Division measures in residential areas including the closure of through roads to provide 'exercise streets' particularly in locations where apartments are located where residents don't have access to a private garden space.



## Fleet Management & Plant Hire Unit

### Hires put in Place

There were **68** hires put in place from 1<sup>st</sup> April – 30<sup>th</sup> April, engaging **18** suppliers.

Hires included 10 light commercial vans for Operations Department to comply with the social distancing guidelines in relation to Covid 19.



New Tractor for the grass cutting season for the Swords/Balbriggan area.



FCC Fleet with zero emissions to cut grass

### Street Lighting

During the current pandemic street lighting maintenance is deemed an essential service with 219 repairs carried out in the month of April.

Further works were carried out installing extra electric charging points at the Watery Lane depot in Swords.



### Watery Lane Swords New EV charging Points

**LED Programme:** In April the LED Upgrade Program saw 909 LED Upgrade works carried out in the following locations:-

- Brookford... Rush
- Castlegrange estate, Phibblestown Wood, Weavers Walk...Clonsilla
- Ballentree  
Avenue/Close/Crescent/Drive/Grove/  
Square/ Villas, Belgree Drive /  
Green/Grove/Heights/Lawn/Rise/Walk/  
Woods, Bishops Orchard, Cruise Park,  
French Park, Gazelle estate, Mount Eustace  
estate, Mount Garrett estate, Rathmore  
estate...Tyrrelstown
- Redwood...Hollystown
- Blackcourt Road, Corduff Distributor Road,  
Mary Brennan Park, The Court St Bridgets  
Park...Blanchardstown
- Fernleigh...Carpenterstown
- Castlecurragh Heath, Castlecurragh  
Park...Mulhuddart



Street showing difference made by upgrading to LED lights

## Traffic Operations Unit

### Contract Preparation

Contract preparation began in March for the following projects;

1. The 2020 Ramps Contract documents are currently being prepared. On completion the Contract will be published on Supplygov in May.
2. The 2020 Signals Contract documents are complete and are currently with the Central Procurement Unit prior to publication. It is expected to be issued for tender in early May 2020.

### TRAFFIC CALMING SCHEMES 2020

During the month of April, Fingal County Council put the 2020 traffic calming schemes for the entire county on public display as required under Section 38 of the Road Traffic Act, 1994 and Section 46 of the Public Transport Regulation Act, 2009. Representations in relation to the Traffic Calming Schemes may be made for a period of 4 weeks.

The schemes include the provision of traffic calming ramps, appropriate road signage and markings where necessary. The provision of traffic calming measures are at the following locations:

Traffic Calming Schemes 2020	
Description and Locations	
<b>Baldoyle/Sutton/Malahide</b>	
New Ramps	
Strand Road, Howth - Bus friendly flat top ramps x 1	
Strand Road, Howth at St Fintans Road - Asphalt Speed cushions x 2 (1 set)	
Strand Road, Portmarnock - Asphalt Speed cushions x 4 (2 sets)	
Back Road/Castlefield junction, Malahide, Table ramp, buildout and new drainage	
<b>Castleknock/Mulhuddart</b>	
New Ramps	
Castleknock Drive - Standard round top ramp x 2	

Allendale to Ravenwood estate - Asphalt Speed cushions x 4 (2 sets)
Glenville Road - Standard round top ramp x 3
<b>Swords/Balbriggan</b>
<b>New Ramps</b>
Donabate - Carrs Mill/ Rahillion - Standard round top ramp x 3
Swords - Brackenstown Road - Standard round top ramp x 2
Donabate - Jn of Portrane Rd, Beaverstown Rd & Ballisk Lane - The Hand
The Avenue, Rush, at St Catherine's National School - Standard round top ramp x 2

### SIGNALS CONTRACT 2020

The Contract consists of the supply and installation of 5 No. Signalised Pedestrian Crossings, 2 No. Signalised Toucan Crossings and 2 No. Zebra Crossings within the administrative area of Fingal. The Contract includes both the civil and the electronic/electrical works of the project.

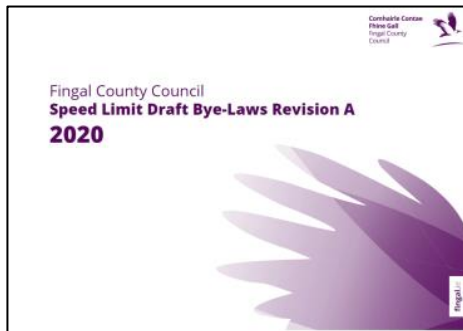
The schemes include the provision of traffic lights, traffic calming ramps, appropriate road signage and road markings. The provision of Pedestrian Crossings are at the following locations:

Traffic Signals for 2020	
Description and Locations	
<b>Baldoyle/Sutton/Malahide</b>	<b>Type of Crossing</b>
St Sabina, Sutton, Dublin 13	Signalised Pedestrian Crossing
Carrickhill Road Lower, Portmarnock, Co. Dublin	Signalised Pedestrian Crossing
<b>Castleknock/Mulhuddart</b>	<b>Type of Crossing</b>
Barnwell Road, Hansfield, Dublin 15	Zebra Crossing
St. Margaret's Road, Ballymun, Dublin 11	Signalised Toucan Crossing
Diswellstown Road, Castleknock, Dublin 15	Zebra Crossing
<b>Swords/Balbriggan</b>	<b>Type of Crossing</b>
R127, Link at Racecourse Commom, Lusk	Signalised Pedestrian Crossing
Fancourt Road, Balbriggan	Signalised Pedestrian Crossing
Balbriggan Road, Skerries	Signalised Pedestrian Crossing
St Cronans Avenue, Swords	Signalised Toucan Crossing



## Traffic Projects Unit

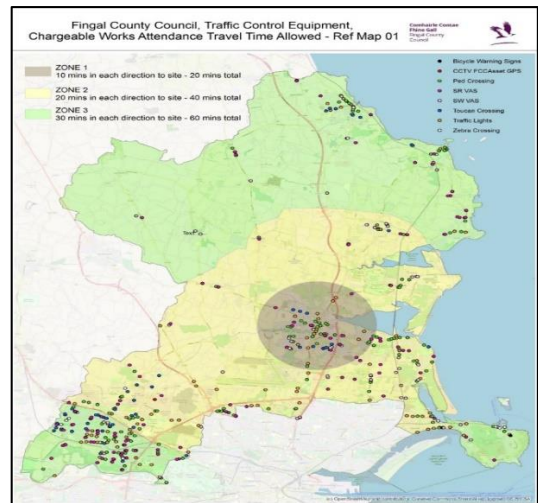
### Speed Limits Project



The first draft of the Speed Limit Bye-laws for the entire county is now complete. The draft document went out for public consultation in February and closed on the 20th March. Almost 200 maps have been generated for the review at a very high level of detail. Approximately 58 submissions were received. A report on the submissions received has been drafted and is currently being reviewed for presentation to the Local Area committees, along with "Draft B" of the Speed Limit Bye-Law Drawings.

### Traffic Control Project

**Fingal County Council's Traffic Signals Maintenance Contract (2020)** was published on the 25th February 2020 on etenders for a period of 6 weeks with an initial closing date of 7th April 2020. Due to the ongoing Covid-19 pandemic, the tender has been extended, firstly for 3 weeks until 28th April but due to the ongoing pandemic issues the closing date for submissions was further extended to 7th May. The Contract is for the provision of Traffic Control Equipment Maintenance and Emergency General Works Contract for a minimum two-year period which can be extended to a maximum period of four years.



**Map indicating Fingal's Traffic Control Equipment**

### Traffic Infrastructure Mapping

A tender was published in April on e-tenders for the commissioning of a report to identify the extent and possibilities arising from the duct infrastructure in the county. The Report will be focused on the urban areas in Fingal which have Traffic Signals/Assets. The tender submissions will be evaluated during the month of May and tender awarded following evaluation.

### Traffic Infrastructure Linkage

Work is continuing on the Traffic Infrastructure Linkage Project. Fingal County Council has engaged with ESB as a lead partner on the Ongar Road Pilot Project in order to address the issues around congestion and the County's limited visibility over strategic road infrastructure. This pilot project focuses on a testbed (Ongar Distributor Road) which is a busy, congested urban area in Blanchardstown that currently has little traffic infrastructure linkage or real-time visibility from a traffic management perspective.

This work will involve the upgrading of Council traffic signal assets on the Ongar Road. The aim is to add CCTV to the junction locations in the testbed location to monitor the performance of these junctions before/after the implementation of the control system. Discussions are ongoing with adjacent local authorities to share various technologies to maximise efficiencies and leverage existing infrastructure and expertise.

## Expansion of Fingal County Councils Duct infrastructure

Discussions are ongoing on various projects, both internally and through 3<sup>rd</sup> parties, throughout the county, to identify strategic locations where ducting can be provided to add to FCC's ducting assets in order to provide Fibre Optic connectivity to remote locations, and interconnectivity of Fingal's assets. Mapping of this infrastructure is also ongoing on G.I.S. so that it is recorded for future use.

Works are under investigation for the development of the fibre optic link along the Hearse Road to connect from the Lissenhall junction to the Donabate Distributor Road (DDR), and to continue the linkage along this new Road to Portrane. This will allow the visibility of the Hearse Road which will be beneficial for key major events in Newbridge House via CCTV and the assessment of traffic on the new DDR.

Discussions are well advanced with 3<sup>rd</sup> parties in getting traffic ducting infrastructure installed in key strategic routes into and sections around Dublin Enterprise Zone (DEZ) which will form part of a vital asset going forward with the aim of improving traffic management and ensuring the DEZ continues to be the sought after destination with regards to ease of commutability.

## Traffic Control Centre Project

Work is ongoing to ensure informed decisions are made for the roll out of the FCC Traffic Control Room Project. Discussions are ongoing with all relevant stakeholders on its implementation: IT Department, Corporate Affairs - Building Facilities/Information & data (GDPR)/Architects, FCC's Traffic Signals Maintenance Contractor - Traffic Solutions, FCC's CCTV Maintenance Contractor - SKS. Identification of a suitable location in Blanchardstown Civic Offices for the

new Traffic Control Centre is being progressed at present.

## Road Safety Section

**Bleeper Bike Share Scheme** - We are continuing to identify additional locations across Fingal in partnership with BleeperBike to expand and encourage bike sharing user growth amongst commuters. Bleeperbike have reported a huge increase in BleeperBike use over the last 3 weeks of the Covid-19 pandemic, particularly in the Dublin 15 area. We will also continue to promote awareness of BleeperBike through our social media platforms.

BleeperBike is **FREE** to all Fingal County Council staff as advertised on Staff Messages.

## Bike Racks - Sheffield Stands & Toast Racks

A substantial number of Toast racks and Sheffield stands, (both galvanised and stainless steel) have been procured this month. The Road Safety Section are compiling a list of locations throughout the county for a plan of works over the Summer months or when Government restrictions are lifted.

Fingal Co. Councillors have been encouraged to submit any suggestions they may have on where they feel bike parking is required in their constituencies or if members of the public have made requests to them for bike parking to please forward them to us.

Staff have also been asked to submit suggestions via Staff Messages and can contact us at [Road.Safety@Fingal.ie](mailto:Road.Safety@Fingal.ie)

The order for bike racks for delivery to the various depots throughout the Summer is as follows:

looking at organising 3 car free days as part of European Mobility Week for 2020.

**Mobility Hubs**

	Coolmine, Dublin 15	Swords	Malahide
End of May	1 Toast Rack 33 Galvanised Single Racks 5 Stainless Steel Single Racks	1 Toast Rack 33 Galvanised Single Racks 5 Stainless Steel Single Racks	1 Toast Rack 33 Galvanised Single Racks 5 Stainless Steel Single Racks
End of June	1 Toast Rack 33 Galvanised Single Racks 5 Stainless Steel Single Racks	1 Toast Rack 33 Galvanised Single Racks 5 Stainless Steel Single Racks	1 Toast Rack 33 Galvanised Single Racks 5 Stainless Steel Single Racks
End of July	1 Toast Rack 33 Galvanised Single Racks 5 Stainless Steel Single Racks	1 Toast Rack 33 Galvanised Single Racks 5 Stainless Steel Single Racks	1 Toast Rack 33 Galvanised Single Racks 5 Stainless Steel Single Racks



**Car Shaped Bike Ports for Mobility Hubs**

Two Mobility Hubs are in the planning stages for locations in Malahide, on the Dublin Road, and in Balbriggan. We are currently liaising with the “Our Balbriggan” Team to install the Balbriggan Hub. The aim of Mobility Hubs is to increase accessibility for those with mobility issues and the ageing population whilst also encouraging sustainable modes of travel & connectivity. The Hubs have different modes of travel/ transport mapped out and are in areas with a high concentration of employment/ housing/ shopping/ amenities and/or recreation that are close to existing public transport links whilst also supporting climate change mitigation.

5 Car Shaped Bike Ports (see photo above) have been procured from Castit Ltd in Waterford and are due for delivery over the coming weeks.

The Signage for the Mobility Hubs has also been ordered and delivery is expected shortly

**Bike Week 2020 & European Mobility Week**

Unfortunately, Bike Week 2020 has been postponed due to Government restrictions regarding Covid 19 and no alternative dates have been arranged yet.

However, we are planning for European Mobility Week, which will run from 16<sup>th</sup> September to 22<sup>nd</sup> of September. We are hopeful that we can work in conjunction with Dublin City, South Dublin, Waterways Ireland and other stakeholders in organising a 44km looped cycle taking in the Royal and Grand Canals. The cycle will begin at The Docklands on the Royal Canal in Dublin City, via Blanchardstown, through St. Catherine’s park and back to the city through Lucan via the Grand Canal.

Following on from the success of “Car Free Day” in New Street, Malahide last September we are



**Bridge Rehabilitation Project**

**Rehabilitation of Curragh, Curragh West & Clonsaugh Bridges**

The Engineering Consultant to carry out the design of the bridge rehabilitations and preparation of tender documents has been appointed. The Consultant will commence working on the the programme of works, prepare the tender documents and drawings. The contractor, Apex Surveys Ltd who has been appointed to carry out the topographical (TOPO) and Ground Penetrating Radar (GPR) surveys has completed the surveys.

**Rehabilitation of Church Road Bridge, Blanchardstown, Wyanstown Bridge & Wimbletown Bridge**

The competition to engage a site contractor that was published in December had a closing date of 29<sup>th</sup> January 2020. Tender Assessment Report produced by the Consultant discussed and approved on 13<sup>th</sup> March 2020. The evaluation stage, successful/ unsuccessful letters, two weeks stand still period, post tender meeting, letter of acceptance will follow. Due to the current national emergency measures it is not clear when site works will commence, however, due to the requirements to work within the Regional Fisheries requirements from July to end of September for all instream works it is, at this moment envisaged that this will take place to ensure works are completed in the available window in 2020.

**Rehabilitation of Knightstown Bridge, Colecot Bridge & Callaighwee Bridge**

Work is nearing completion on the Safety Files for all three bridges.

The admin team also continue to ensure all road opening licences, abnormal loads and taken in charge requests are processed promptly.

	1 <sup>st</sup> March – 30 <sup>th</sup> April 2019	1 <sup>st</sup> March 2020 – to date
Abnormal Loads	96	47
Road Opening Licences	258	334
Taken in Charge	303	193

**General Operations**

Estuary Recycling Centre continues to provide an invaluable service to the community with in excess of 12,000 cars through the gates during the month of April.





## Drainage Works

Operations have identified 13 locations for improvement works to deal with surface water flooding. Works at Drishogue, Oldtown have commenced, whilst some progress has been, work will be completed once COVID 19 restrictions have been lifted.



## Grass Cutting in Dublin 15



## Fly Tipping



Operations Crew secure the fencing at the Wren's Nest, Strawberry Beds.





## Flowers in Fingal



Pollinator friendly bulb planting on Lusk bypass in full bloom. There are currently over 120 locations in the County which have been designated as wildflower and bulb planting areas. For the last number of years, Fingal's policy of planting wildflowers on roadside verges and roundabouts have received very positive feedback from residents and visitors alike



Bluebells in West Lawn, Malahide Demesne



Ariculas in Flower



Operations Department working in collaboration with Seabury Residents Association with a new wildflower area added last year in Seabury Open Space opposite the Estuary.

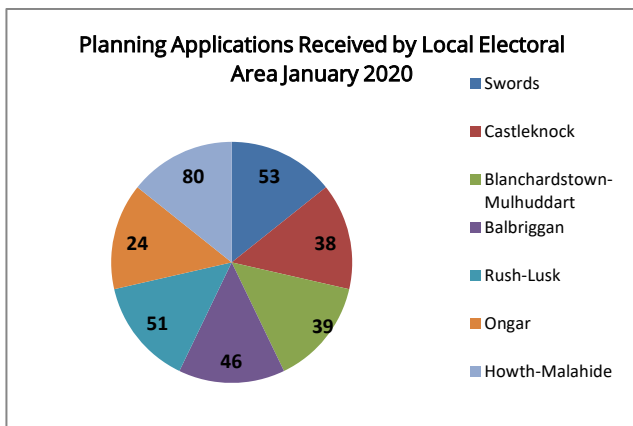
# PLANNING AND STRATEGIC INFRASTRUCTURE (PSI)

Contents	
Planning Applications	Donabate Distributor Road
Planning Decisions	Turvey Avenue Footpath Enhancement
Building Control	Portrane Road Footpath Enhancement
Donabate Urban Framework Plan	Hearse Road Bend Realignment
Fingal Development Plan Variation no. 2	Park Road
Fingal Development Plan Variation no. 3	Churchfields Link Road
Fingal Development Plan Review	R132 Junctions
Forest of Fingal - Tree Strategy	Development Management/Forward Planning (Water Services)
Fingal Play Policy	Building Control/Taking in Charge
Installation of additional 'SeaBees' in Portrane	Gardening for Biodiversity
Transportation Planning and Projects	Remains in River Valley Park
Rathbeale Road	Heritage Signage
Broadmeadow Way	
Hole in the Wall Road Scheme	

## Planning Applications

There have been 331 planning applications received to the end of March 2020, 44 of these applications were invalid leaving a total of 287 valid applications. The volume of applications received by Local Electoral Area (LEA) is detailed in the table below.

To date in 2020, 3 Strategic Housing Development (SHD) application (for 459 units) were made to An Bord Pleanála. The Board granted permission for 10 SHD's (2223) units); 3 in January, 5 in March and 2 in April. The Board refused permission for 1 SHD (359 units) in February. There are a total of 3 SHDs (459 units) currently in the formal application process.



## Planning Decisions

A total of 289 planning decisions have been made to the end of March 2020. There have been 234 decisions to grant permission (81%) and 55 refusals of permission (19%). There have been 22 grants of permissions in respect of single house construction, 124 grants of permission for domestic extensions, 65 commercial/retail grants of permission and 16 grants of permission in respect of housing developments - 4 of which related to development 2 - 20 housing units, 1 of which related to development 20 - 50 housing units, 3 of which related to development 50 - 100 housing units and 8 of which related to developments of 100 + housing units.

## Building Control

There were 46 Disability Access Certificates submitted to the end of March 2020, of these 29 have been granted and 12 are currently on time extension. There were 53 Fire Safety Certificates submitted to the end of March 2020, of these 4 have been granted and 49 are currently on time extension.

## Donabate Urban Framework Plan

We have commenced an extensive consultation process in Donabate as part of our plans to create an Urban Framework Plan (UFP) for the town. A leaflet drop to all houses in the area took place in early-mid March. So far 9 submissions have been received. The period for receipt of submissions has been extended and is likely to continue through May. Reminders will be put onto the FCC facebook and twitter page to encourage submissions.



## Fingal Development Plan Variation no. 2

On 10<sup>th</sup> January 2020 we published Variation No. 2 to the Fingal Development Plan, pursuant to Section 13 of the Planning and Development Act 2000 (as amended).

This proposed Variation seeks to respond to the recent changes in National and Regional planning policy, namely the publication of the National Planning Framework (NPF) in 2018 and the Eastern and Midland Regional Assembly (EMRA) Regional Spatial and Economic Strategy (RSES) in 2019. The proposed Variation will result in amendments to the Core Strategy and associated tables in the written statement; and amendments to text and objectives/policies throughout the written statement to refer to the National Planning Framework and the Regional Spatial and Economic Strategy.

The Variation was on public display until 7<sup>th</sup> February. A total of 26 submissions were received during the consultation period. All submissions have been considered and the Chief Executive's Report on same was issued on 6<sup>th</sup> March. This Chief Executive's Report will be considered at the June County Council Meeting. A briefing will be provided on the Chief Executives Report during May, prior to the deadline for submitting motions on the Variation.

## Fingal Development Plan Variation no. 3

On 10<sup>th</sup> January 2020 we published Variation No. 3 to the Fingal Development Plan, pursuant to Section 13 of the Planning and Development Act 2000 (as amended).

This proposed Variation seeks to remove the indicative line for the Road Proposal, "N3 – N4 Barnhill to Leixlip Interchange", as shown on Sheet 13, Blanchardstown South.

The Variation was on public display until 7<sup>th</sup> February. A total of 13 submissions were received during the consultation period. All submissions have been considered and the Chief Executive's Report on same was issued on 6<sup>th</sup> March. This Chief Executive's Report will be considered at the June County Council Meeting. A briefing will be provided on the Chief Executives Report during May, prior to the deadline for submitting motions on the Variation.

## Fingal Development Plan Review

The review of the Fingal Development Plan commences in March 2021. The Development Plan is the primary document for ensuring the sustainable growth and development of the County over the period from 2023 – 2029. A briefing is proposed to be provided to the Elected Members at the nearest available opportunity to set out the process of making a plan, the timelines involved, the role of the elected members and the legislative requirements of the plan.



## Forest of Fingal - Tree Strategy

The Parks and Green Infrastructure Division in consultation with colleagues from the Operations Department are currently working on the review and revision of 'Forest of Fingal' a Tree Strategy for Fingal, with an aim to complete and publish in 2021.

The main vision of the strategy is to manage Fingal's trees, woodlands and hedgerows to maximize the wide array of naturally occurring benefits they offer us and to ensure this resource can be enjoyed by future generations.

The strategy will take the form of a ten-year plan to secure a thriving, diverse, and sustainable tree population to aid in the resilience of the county to the effects of climate change, while enhancing the lives of the many residents, workers and visitors of Fingal. The document will also contain useful guidance, policies and information for staff, stakeholders and all interested parties. It will highlight in detail the benefits and value of trees and put them on par with other elements of urban infrastructure as trees are arguably the only element of urban infrastructure that appreciate in value as they age.

Part of the long-term plan is to create a sense of ownership amongst residents and community groups through engagement, promotion and awareness raising, starting with an extensive public consultation process for the strategy document itself over the coming months.



Beech trees along the river Liffey at St. Catherine's Park

## Fingal Play Policy

In recognition of the fundamental importance of play in the lives of children in terms of physical and mental health, wellbeing and socialisation, a steering group has been established within the Parks and Green Infrastructure Division to deliver a Children's Play policy that will form the basis for the implementation of best practice play provision for the children of Fingal. It is anticipated that the draft play policy will be prepared for consultation later this year.



## Installation of additional 'SeaBees' in Portrane

Fingal County Council has engaged contractors to install an additional 800 "SeaBee" reinforced concrete units along the beach in Portrane. Installation is ongoing currently and we expect to complete this work during May. It should be noted that these works are considered critical in the context of the COVID-19 restrictions and associated construction exemptions apply. The works will be progressed in line with the HSE recommendations and requirements.

Three lines of "SeaBee" units are being placed along the Beach to protect an additional 565 linear meters of the coastline vulnerable to erosion during storms and high tides.



Fingal County Council has had extensive engagement with the Office of Public Works (OPW) and the National Parks & Wildlife Service (NPWS) in relation to the emergency measures. The Council is applying to the OPW for grant funding to cover the cost of the works.

In addition to these Emergency Works, consultants appointed by Fingal County Council have prepared a plan to address significant and long-term Coastal Change in the Rogerstown Outer Estuary including the Rush coastline. Due to the ecological sensitivity of the site and the complexity of the issues involved, it is likely that the assessment of this plan which will include extensive public consultation, environmental evaluation and the relevant consent processes will take over a year to complete.



### Transportation Planning and Projects

Work on transportation planning and projects continues with business as usual through remote working arrangements. For the planning process, ongoing virtual pre-planning meetings for commercial, residential and SHD's are taking place alongside regular engagement with other stakeholders such as TII and NTA. All project consultants working on transportation projects are continuing to work remotely with the Council's project teams. For those projects at the design and

planning stage, new ways of working with stakeholders will need to be developed to ensure consultation exercises, for example, can continue within social distancing restrictions, whilst for projects that are on site, particular attention will be required to ensure worker and public health and safety requirements are met such as staggered work hours, disinfection protocols and smaller teams. Council technical staff continue to work to develop the best measures to address these challenges in order to safely deliver the significant new infrastructure proposed within the Fingal Capital Programme 2020-2022.

### Rathbeale Road

The Rathbeale Road Upgrade has been open to traffic since substantial completion in March, which was a number of months ahead of the original programme. The newly upgraded footpaths and cyclepaths are being well used by local residents during this Covid lockdown period. The contractor will return to site once Covid restrictions are lifted to complete any minor works outstanding and negotiations between the Council's project team and the contractor on a final account settlement are well advanced.



### **Broadmeadow Way**

Whilst awaiting the decision from An Bord Pleanála the Council has continued coordinating with relevant stakeholders including Irish Rail to ensure that in the event of a planning consent the project can proceed without delay, with a number of advance works contracts taking place in 2020 and the main works contract taking place in summer 2021.



### **Hole in the Wall Road Scheme**

Construction on this LIHAF project began earlier this year and the site has been secured and made safe for the duration of the period of COVID-19 restrictions. Fingal County Council, Barry Transportation and SIAC continue to make progress on the scheme by liaising with Irish Water and other utility companies regarding service diversions and regular meetings to address technical design, safety and contractual issues.



### **Donabate Distributor Road**

The works have been substantially completed and the road has been open to traffic since early March. The main contractor, MEIC Ltd., has secured the site compound and continues to liaise with Fingal County Council over certain tasks and activities required to finish the project completely, such as landscaping, footpath, traffic and environmental works. A work programme to address all outstanding issues is being developed at present.

### **Turvey Avenue Footpath Enhancement**

Planning approval was obtained for this scheme which will see a new footpath installed on Turvey Avenue linking residential areas to Donabate Train Station and village. Land acquisition drawings have been prepared to facilitate a Compulsory Purchase Order (CPO) process which will be the subject of further consultation with affected landowners over the coming weeks. Tender documents are being prepared to facilitate the appointment of a suitably qualified works contractor.

### **Portrane Road Footpath Enhancement**

Discussions with landowners affected by Council proposals to provide a wide footpath on the northern side of Portrane Road near the national school have taken place. Preparations are being made to carry out a public consultation exercise and obtain Part VIII planning permission for the scheme in the coming weeks.

### **Hearse Road Bend Realignment**

Planning approval was obtained for this scheme which will see a new and safer road alignment introduced on a section of the Hearse Road (R126). Liaison is continuing with Irish Water and other parties affected by the proposed works. Tender documents are being prepared to facilitate the appointment of a suitably qualified construction company to carry out the

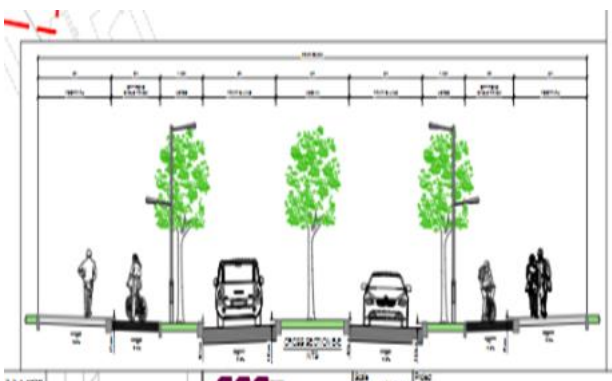
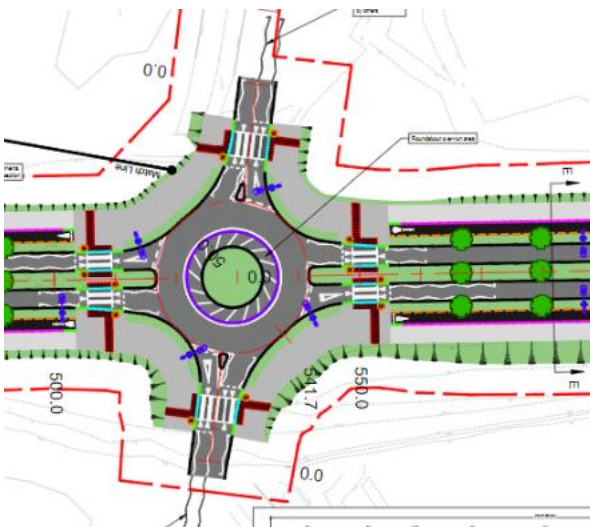
realignment works, likely to take place in late 2020.

### Park Road

Total Highway Maintenance Ltd has been appointed as the Contractor for this project, with construction work due to commence as soon as the current restrictions are lifted. There is an approximately nine month duration for the works and traffic management and safety plans are currently being prepared.

### Churchfields Link Road

The public consultation for this Part 8 application ended on 27<sup>th</sup> March 2020. All submissions have now been reviewed and the project will be discussed with the area members prior to progressing to Full Council. The final scheme will provide a significant improvement for all transport modes in this area including in particular cyclists and pedestrians travelling to the nearby schools.



### R132 Junctions

We are working with the National Transport Authority and their consultants regarding measures to enhance pedestrian, cyclist and bus priority measures along the R132 Swords Bypass, in particular at the four existing roundabout junctions, with a view to facilitating the MetroLink project by enhancing connectivity to the new MetroLink stations across the R132. It is hoped to provide further details on this proposal by way of an online briefing to the area members in due course, with a view to having a public consultation exercise later in 2020.

### Development Management/Forward Planning (Water Services)

- COVID19 crisis - The team now have full IT capability and are working remotely. We have full access to FCC networks, as if we were in the office, and conduct our meetings via phone and video conferencing. Very limited office attendance is conducted on a rota basis when necessary and in compliance with the HSE guidelines. We have adjusted well and are continuing with business as usual within our new working environment.
- Development Management – our work as internal consultee on planning applications continues through the Lockdown. Legislation allows for an suspension orders (initially of 23 days, subsequently 42 days) on decisions on some applications which were in the system. Given our IT capability, all of this work continues remotely on a business as usual basis and we are up to date with our duties in that regard.
- Pre-planning consultations – During April staff from Forward Planning (Water Services) have engaged in discussions with developers at pre-planning stage to discuss issues related to the provision of water services and to ensure the implementation of sustainable drainage systems on site



- Flood Risk Assessments and Drainage Strategies to inform Local Area Plans
- SHDs – staff are engaged as internal consultees in discussion on approx. 19no. SHD applications
- CDS – staff continue to provide planning review of water/wastewater connection applications on behalf of Irish Water. Staff have remote access to IW's network and as such this process continues as normal.

### Building Control/Taking in Charge

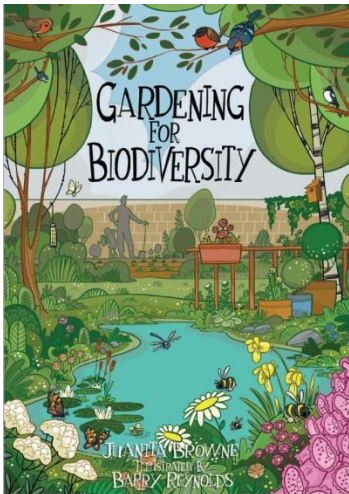
- COVID19 crisis - The team now have full IT capability and are working remotely. We have full access to FCC networks, as if we were in the office, and conduct our meetings via phone and video conferencing. Very limited office attendance is conducted on a rota basis when necessary and in compliance with the HSE guidelines. We have adjusted well and are continuing with business as usual within our new working environment.
- Building Control is defined as an essential services under the CCMA's definition.
- Building Control Inspections - The vast majority of construction sites have closed and site inspections have halted during the Lockdown. However, inspectors and engineers continue to engage with developers by other means to deal with historic and current issues eg buildings using modern methods of construction and compliance with the building regulations, compliance with part L energy efficiency in particular insulation types, compliance of extensions with Part C moisture resistance.
- BCMS – the management and validations of building control documents through the BCMS (Building Control Management System) continues through the Lockdown. Legislation allows for an extension of time (initially of 23 days, subsequently 42 days) on responses to applications which were in the system. Given our IT capability, all of this work continues remotely on a business as usual basis and we are up to date with our duties in that regard. There has been a

drop off of applications through BCMS. However, we understand that there is significant activity on the website which suggests lots of preparation work underway which may result in a surge when the Lockdown is lifted. We are preparing for this.

- Dangerous Structures/Places – FCC's duties under the Sanitary Services Act 1964 is considered an essential service and each interaction is considered on a case by case basis
- Dangerous Structure/Places inspections – each complaint is assessed on a case by case basis. During April we have received 10 notifications and we have conducted 6 site visits, where we deemed this absolutely necessary. Follow up is underway in 6 cases.
- Taking in Charge of Legacy Developments – Frameworks of services providers are operating and have been used to develop site resolutions on 12 IBRC developments and 6 other developments. All bond claims have been submitted and verified by IBRC through 2019. IBRC have approved 7 bond claims and we are awaiting response on the remainder. FCC are preparing tender documentation for works contracts which will lead to the Taking in Charge Statutory process.

CPD (Continuous Professional Development) – given our current remote working environments, this division has now moved our CPD programme to video conferencing. We are now progressing on a business as usual basis, with our initial video CPD presentation on the subject of building control responsibilities and the next one on the subject of compliance with Part B Fire Safety.

**Gardening for Biodiversity:** *Gardening for Biodiversity*, a new free booklet from the Local Authority Heritage Officer Network to help everyone to help wildlife in their gardens, was launched digitally on the Fingal website <https://www.fingal.ie/gardening-biodiversity-create-haven-wildlife> and across social media platforms.



**Heritage Signage** The Heritage Officer will be developing an integrated policy for Heritage signage and Heritage Trails in response to an identified need for guidance to support communities and as part of the Heritage Plan 2018-2023 implementation. Views welcome to [christine.baker@fingal.ie](mailto:christine.baker@fingal.ie)

**Remains in River Valley Park** The Heritage Officer has been working with the Underwater Unit of the National Monuments Services (NMS) to develop a methodology for the resolution of the skeleton site in the River Valley Park, once Covid-19 restrictions are lifted. This will include geophysical survey, riverbed assessment, limited excavation, osteoarchaeological analysis, site protection, under licence to the NMS and National Museum of Ireland. This recorded monument (DU011-090) was first uncovered in 1999 (Fingal Heritage facebook [entry](https://www.facebook.com/fingal-cultural-heritage/) <https://www.facebook.com/fingal-cultural-heritage/> 10 April, for details) and there is currently a lot of public interest in the site, which has been fenced off. Discussion on an appropriate engineering solution to prevent further erosion of the riverbank, are ongoing.



## HOUSING & COMMUNITY, CULTURE & SPORTS (H&CC&S) & LIBRARIES

<b>Housing</b>	<b>Community, Culture &amp; Sports</b>
	Community Development Office Sports Office Arts Office <b>Libraries</b>

### Housing Supply Report

Through the Covid-19 restrictions, Fingal County Council continues to deliver social housing units and continues to provide housing solutions in accordance with the Rebuilding Ireland Action Plan through a range of delivery mechanisms including construction, Part V, acquisitions, leasing and Housing Assistance Payment Scheme (HAP).

### Construction Programme

The Council has an ambitious construction programme underway with 22 sites across the county and 210 homes already delivered.

COVID-19 impact on Council construction schemes. The Housing Agency has agreed to designate the Rathbeale Road, Swords housing project as an essential project within the meaning of the COVID - 19 health regulations. To meet the criteria as an essential project it must be a social housing scheme and be completed within six weeks of being designated. The contractor has recommenced works on site and all 24 houses will be delivered by end of May. Five of the 24 units have been adapted to accommodate individuals with additional needs.

All works on the site will be required to adhere to the Public Health Guidelines COVID-19 as well as other relevant health and safety regulations, guidelines and protocols applicable to the construction sector.

All remaining social schemes are at either pre-planning or tendering stage and can be progressed as normal and the design teams can work and communicate remotely. However, where on-site investigations studies are required by members of the design teams these may be delayed due to Covid-19 restrictions.

It is proposed to have a number of schemes ready to be tendered once the crisis period ends. Pre-planning work is underway on a number of other housing projects which could be presented informally to the local Councillors subject to Covid19 guidelines.

The following table outlines the various stages that construction projects are currently at.

Project	Units	Status
St Cronan's x 2 schemes	15	Completed
Cappaghfinn I	14	Completed
Balrothery - North + East	9	Completed
Wellview, Dublin 15	20	Completed
Racecourse Common	74	Completed
Ballyboughal	8	Completed
Pinewood, Balbriggan	20	Completed
Estuary Road - V de Paul	8	Completed
Castlelands, Balbriggan	24	Completed
Ravenswood, Coldwinters, Peter McVerry Trust	8	Completed
Rivermeade	2	Completed
Pinewood CC, Balbriggan	2	Completed
Avondale, Dublin 15	42	Completed
Church Road, Dublin 15 - FCC	22	Completed
Rolestown Phase 1	26	Completed
Rathbeale Road, Swords	24	On Site
Church Road, Dublin 15 - Cluid Housing (see note below)	64	On Site
College St. Baldoyle - Cluid Housing	4	On Site
Tucketts Lane, Howth	8	Tendering Stage



Wellview Cul de Sacs, Wellview, D15	20	Tendering Stage
Cappagh, Dublin 11	69	Tendering Stage
Outlands, Swords, Co Dublin	11	Tendering Stage
Church Fields Phase 2B, Mulhuddart, D15	70	Tendering Stage
Kilhedge Lane - Tuath Housing Association	48	Planning Stage
Former Leonards Garage, Lusk	10	Planning Stage
Church Road, Lusk	5	Planning Stage
Garristown – North and East Housing Association	5	Planning Stage
Hayestown, Rush	50	Planning Stage
Infill Site adjacent to 169 Clonsilla Road, D15	1	Planning Stage
	683	

### Designation of Essential Sites

The Housing Agency nominated six social housing construction sites in the Fingal area as designated essential sites which enabled construction to recommence. These sites had to deliver completed units ready for allocation within six weeks subject to confirmation from the contractor that all works would be carried out in compliance with Covid-19 and all other health and safety regulations. A total of 91 units will be delivered.

### Church Fields, Dublin 15

Detailed design and the pre-planning process has commenced in relation to 500 discounted purchase, discounted rental and social properties. Progress on delivering the housing potential of the site continues;

An initial phase of the housing development of Church Fields has been approved and is at tendering stage – 20 homes.

The next phase of development consisting of 70 social houses has been approved and is at tendering stage.

Funding has been approved under the Serviced Sites Fund (SSF) to enable delivery of key road and

green infrastructure to facilitate the development of the site.

Part XI for the road link between Damastown Road and Wellview Avenue including the upgrade of the existing Wellview Avenue and a cycle way adjacent to Church Road will be brought to the June Council meeting for approval.

The green infrastructure design is also underway as outlined in the Land Management Plan.

The Area Committee will continue to be briefed in relation to development on the overall site.

### Land Development Agency

The Council is working closely with the Land Development Agency (LDA) to bring forward land banks located in Fingal to unlock their potential to deliver mixed tenure housing.

The Council has received funding under the SSF for lands at Hackettstown in Skerries which is in the Land Aggregation Scheme and currently in the ownership of the Housing Agency/LDA. The Council has been working with the LDA and the Housing Agency to bring this site forward for development. The LDA propose to lodge a planning application for the infrastructure upgrade shortly. Further information will be brought to the Area Committee when available.

### Part V Delivery

The current Covid19 crisis will impact on the delivery of Part V units across the county. However, the Housing Department are working with developers in relation to secure delivery of social housing units.

### Approved Housing Bodies

The Covid-19 restrictions will also have an impact on the delivery of social housing by AHBs. The Housing Department continue to work closely with all AHBs in relation to finalising delivery and the allocation process.

### Other Development Opportunities

The Housing Department are available to meet with developers who are building across the county with a view to exploring opportunities to bring forward proposals to increase the supply of social housing.

### Affordable Dwelling Purchase Arrangements

The Affordable Dwelling Purchase Scheme is a national initiative that will see affordable homes built on state owned land in co-operation with local authorities.

The procurement process for the developed design, construction, delivery and sale of 39 affordable residential units at Dun Emer, Lusk is nearing completion. Subject to Covid-19 restrictions, the Council anticipate that the contractor will be appointed shortly.

It is proposed to bring further detail and updates on this scheme to the local Councillors shortly, subject to Covid19 guidelines.

### Leasing Schemes

The Housing Department continues to operate the various leasing schemes to provide much needed properties for social housing. The Covid19 restrictions are slowing the process somewhat, however, all properties that have been inspected and fully signed off are being processed and leases continue to be signed with property owners.

### Covid19 Employment Loss

#### Rebuilding Ireland Home Loan

Number of applications received to date	954
Number of applications approved	444
Value of the loans approved	€99,823,793.00
Number of loans drawn down	225
Value of loans drawn down	€49,425,699.00

Mortgage holders who have lost employment due to the Covid19 crisis and are experiencing difficulties making repayments should contact the Council immediately on [www.loans@fingal.ie](mailto:www.loans@fingal.ie). Subject to proof of job loss or reduced hours, Fingal County Council may offer a solution to make reduced or deferred payments that are proportionate to the loss of income.

As a minimum, Mortgage Protection Insurance payments must be made so as not to break the continuity of cover. Fingal County Council will endeavour to find an individual solution with each borrower.

Failure to make mortgage repayments without an agreement with Fingal County Council may affect credit ratings and limit ability to access credit in the future.

Further details are available on the Council's website [www.fingal.ie](http://www.fingal.ie)

### Rent Payments – Council Tenants

Council tenants who have temporarily lost employment due to Covid19 crisis, may have their rent temporarily re-assessed based on Social Welfare payments until their employment situation becomes clearer. Tenants should contact the Council immediately at email; [rentaccountD15@fingal.ie](mailto:rentaccountD15@fingal.ie) or [rentaccountnorthcounty@fingal.ie](mailto:rentaccountnorthcounty@fingal.ie). Further details are available on the Council's website [www.fingal.ie](http://www.fingal.ie)

### Private Rented Inspections

In February 2018, all local authorities were issued with targets for the Inspection of Private Rented Properties by the DHPLG in conjunction with its Strategy for the Private Rental Sector – a key component of Rebuilding Ireland. The aim is to increase the national average inspection rate from 6% to 25% of registered rental properties by 2021. The targets are based on the percentage of tenancies registered with the RTB, which within the Fingal County Council administrative area was 21,034 at end of 2018.

The annual targets are as follows:

2018 (10%)	2019 (15%)	2020 (20%)	2021 (25%)
2,072	3,155	4,207	5,259

For the duration of the Covid19 crisis, emergency inspections will be carried out as required.

## April Photos from social housing construction schemes

### Rolestown



### Rivermeade



### Rathbeale Road



## Housing Tenancy Services Report

### Housing Support

Fingal County Council's Housing Department is continuing to provide services across its full range of Tenancy Services during the COVID19 outbreak. Whilst Public Offices remain closed to the members of the public in accordance with current health restrictions, the Housing Department remains open for business.

A simple, and easy to use guide for all those who need assistance has been made available on Fingal's website via [www.fingal.ie](http://www.fingal.ie)

For those who may have queries in relation to their accommodation circumstances, the following contact details have been made available on Fingal's website, and messaged on Facebook and Twitter to reach as many of our citizens as possible.

Housing Unit	Contact Details
Homeless Services	01 890 5090 <a href="mailto:homeless@fingal.ie">homeless@fingal.ie</a>
HAP	01 870 4515 <a href="mailto:HAP@fingal.ie">HAP@fingal.ie</a>
Estate Management (Maintenance, ASB & Special Projects)	01 890 5588 <a href="mailto:Estatemanagement@fingal.ie">Estatemanagement@fingal.ie</a>
Lettings	01 890 5380 <a href="mailto:Housing.allocations@fingal.ie">Housing.allocations@fingal.ie</a>
Housing Support	01 890 5902 <a href="mailto:Housing.allocations@fingal.ie">Housing.allocations@fingal.ie</a>
Customer Care Team	01 890 5000 <a href="mailto:CustomerCareUnit@fingal.ie">CustomerCareUnit@fingal.ie</a>



## Information Videos

The Housing Department have launched a suite of videos on various social media platforms to deliver information to our citizens on how they can access housing support services during the Covid 19 outbreak.

The videos are launched across three digital platforms of Facebook, Twitter and Instagram. Links to these are detailed below.

<https://www.facebook.com/pg/fingalcoco/videos/>

<https://twitter.com/fingalcoco>

<https://www.instagram.com/fingalcountycouncil/>

## Social Housing Support

The Housing Support team are continuing to assess applications for social housing support during this time.

Should you now wish to seek support for Social Housing, you may do so by completing and returning a Social Housing Application Form. To access an application form, please log-on to Fingal's website via [www.fingal.ie](http://www.fingal.ie) and follow the link to Housing Provision . and you can submit housing applications by

Post to Housing Support Team , Fingal County Council, Grove Road, Blanchardstown, Dublin D15W638

The Lettings Team continue to provide offers of social housing support as stock becomes available notwithstanding current restrictions during COVID -19. The supply of housing is continuing through a number of mechanisms allowing us to continue to make offers of support across standard social housing, with Approved Housing Bodies as well as the provision of a number of transitional housing options.

Month	Offers of Housing Support 2020
January	117
February	103
March	137
April	114
<b>TOTAL</b>	<b>471</b>

## Housing Assistance Payment (HAP)

The HAP team in Fingal County Council continues to operate as normal with the public contacting us through email and phone during COVID-19 restrictions. Additional resources have been deployed to assist with the volume of calls/emails from those who have been affected by the current crisis (in relation to a change in income).

Since its inception in Fingal County Council in 2017, the HAP team have set up over 2,000 tenancies with 110 in place during 2020 to date. A further 170 tenancies are being progressed.

## Homeless Services

We are working with our partners in the DRHE and many of the Service Providers in the sector to ensure that there has been and will be no disruption to these services during the restrictions imposed by Covid-19 public health requirements

The Council's homeless team continue to engage with those experiencing homelessness to offer advice and support. Homeless Assessments continue via telephone and where there is a need, emergency accommodation continues to be available. Demand during April has been low.

34 families exited homeless accommodation during April with a considerable further number of exits planned during May.

The Council is linked in with an Approved Housing Body, NOVAS , who is working with homeless families to assist them in seeking accommodation through HAP.

Since 1<sup>st</sup> January 2020, a total 187 households have exited homelessness through the various means of housing support. Homeless HAP accounts for 125 of these tenancies.

## Travellers Supports

### *Covid-19 Initiatives*

A number of measures are underway within Fingal to ensure that Traveller families receive as much assistance as possible during these unprecedented times.

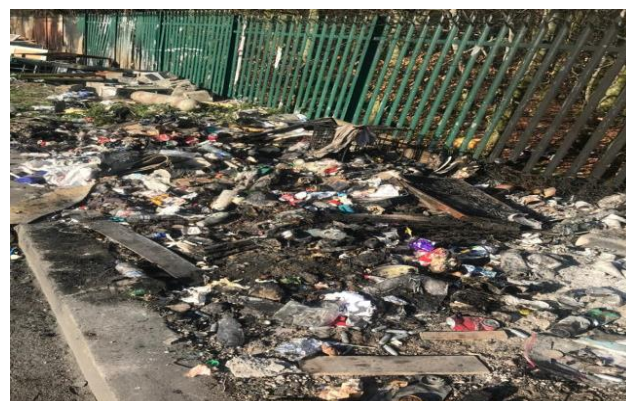
It is important to note that the Traveller specific stock is currently being visited on a daily basis by the Housing Inspectorate staff and Senior Officials. This is being done in a respectful manner and maintaining social distancing guidelines, and to check on vulnerable tenants and advise on the supports available to them. It is also used to collate any maintenance issues. In addition, the Council's designated Social Worker Service for Travellers is making regular contact with the most vulnerable, in order to assist with additional needs arising from current circumstances. Meals on Wheels are being delivered to the most vulnerable through an initiative of the Community Response Forum.

Significant supports available through the Housing Department, among other things, include ;  
Emergency / priority lettings for applications from Traveller specific accommodation, where possible,  
Arrangements to assist with applications for requests to self- isolate or cocoon,  
Additional Clean Ups and  
Emergency Maintenance requests are being prioritised.

The Council is also providing the following additional measures on sites as part of its strategy to raise awareness of Covid 19 and additional requirements around hygiene and social distancing;  
notice boards have been erected on sites with relevant hygiene and Health & Safety guidance, and other useful information for additional supports available to the community.

Additional callouts for treatment of waste water systems are in place and if any additional Portable Toilet facilities are required, this can be arranged, Tenants have been provided with resources to maintain on site hygiene with the supply of litter pickers and supply of recyclable waste collection bags.

A meeting of the Local Traveller Accommodation Consultative Committee (LTACC) was held via conference call on 30<sup>th</sup> April. Members were provided with an update in relation to the significant number of interventions and supports which have been provided to date at Traveller specific accommodation under COVID-19 measures.



**Clean up at Barnlodge Group Housing Scheme**

## Returning Dwellings to Productive Use

The number of casual voids within Social Housing Stock which are currently in the re-let process is as set out in the table below;

Voids	At 30 <sup>th</sup> April 2020
In letting process	29
Undergoing re-let repairs	28
With County Architect for procurement of pre-let repairs	24
<b>TOTAL</b>	<b>81</b>

## Planned Maintenance Programmes

### Boiler Servicing

The Council provides an annual boiler servicing facility, including all maintenance and upgrade works, for a nominal fee of €3 per week to participating tenant. The 2020 servicing programme is underway and several batches have issued to our contractor. Access to dwellings may be refused by householders during the current Covid-19 public health restrictions but there will be return visits later in the year, to ensure that servicing standards are met.

### Cyclical Maintenance

This programme provides for external painting and joinery repairs to council housing stock. Currently the programme operates on a 6/7 year cycle. Public Health guidelines permitting, painting works in the remaining dwellings in Sheepmoor Estate, Dublin 15 should be completed as soon as restrictions are lifted. The next batch of estates to be procured, for commencement of works in the summer months, public health guidelines permitting, is as set out below;

Estate	
St Patricks Park,	Donabate
Castlecurragh Heath/Vale	Dublin 15
Dromheath	Dublin 15
Shamrock Park	Oldtown
Windmill Estate	Skerries
Toberburr Avenue	St Margarets
The Bawn Grove/ The Hill	Malahide
Kirkfield Cottages	Clonsilla
Lambeeher Estate	Balbriggan

### Heating Upgrades

Boiler upgrades are continuing based on the Council's commitments under its Climate Change Action Plan. These include boiler and systems upgrades as part of re-let repairs to void properties

## Estate Maintenance and Grass Cutting

The Housing Maintenance Division provides a grass cutting service for circa 350 elderly or vulnerable tenants, within its housing estates. In addition, grass cutting is provided in small areas of open space, not covered by Operations Department, with the overall objective of improving the visual aspect of the estates. The ongoing provision of grass cutting services to vulnerable tenants will continue as normal, in line with the social distancing requirements of public health guidelines. This service will re-commence during May.

Laneways provided to the rear of dwellings in the older estates can be a source of dumping and anti-social behaviour and the Housing Maintenance Division works with local residents to find solutions where issues exist. In some cases, laneways are gated and keys provided to adjoining residents for local access. In other situations, where all householders are in agreement, laneways can be incorporated into the adjoining rear gardens.

### Housing Welfare Service

The Social Workers attached to the Housing Department are available to support vulnerable tenancies and to work with housing applicants who have medical/welfare needs.

In response to Covid-19, the Housing Social Workers are actively engaged with their most vulnerable cases at this time providing support, information and inter-agency linkages when and where required. Tenants have been identified by the Social Workers and Housing Inspectors who may be considered particularly vulnerable during COVID-19 and follow on action has been initiated through a number of mechanisms including the Fingal Community Response Forum.

In addition there are currently 24 cases being provided with supports by the Tenancy Sustainment Service, on an ongoing basis.



## Anti-Social Behaviour/ Inspectorate/ Stock Management

The ongoing management and sustainment with regard to social tenancies and good estate management falls within the remit of the ASB/Inspectorate Unit. Alleged breaches pertaining to tenancy agreements are investigated and pursued in accordance with Housing legislative guidelines.

There are occasions when the vulnerabilities, complexities and health related issues associated with a tenancy require tenancy sustainment intervention and supports. Ongoing case management and review with a variety of external agencies, including Approved Housing Bodies, An Garda Síochána, Tusla and the HSE is a necessity to ensure all agencies work collaboratively with a view to achieving best outcomes.

### Stock Management

48 cases under review – 7 regularisations, 13 breaches (allegations of sub-lets, abandonments, illegal occupiers), 15 Miscellaneous

13 downsizing

Surrenders on EM Grounds – 1 (Jan), 3 (Feb), 3 (March), 3 (April)

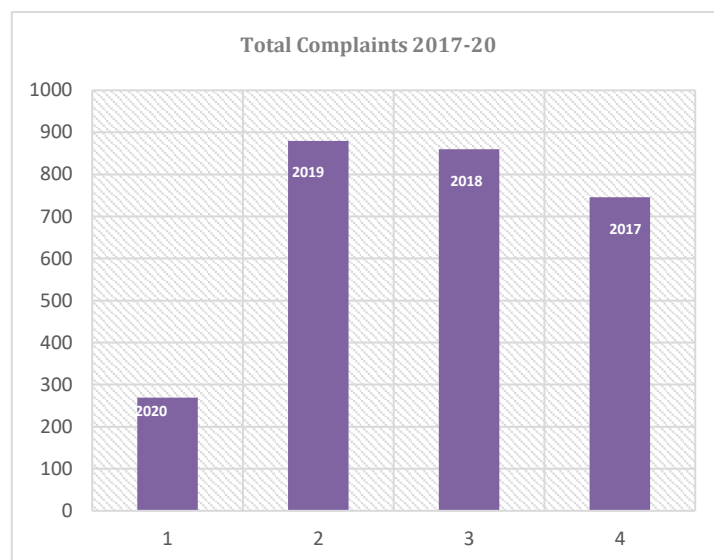
### Anti-Social Behaviour

	Active Investigation	Active Monitoring	Closed (cumulative for year)
Dublin 15	38	20	19
North County	39	49	21
<b>TOTALS</b>	<b>77</b>	<b>69</b>	<b>40</b>

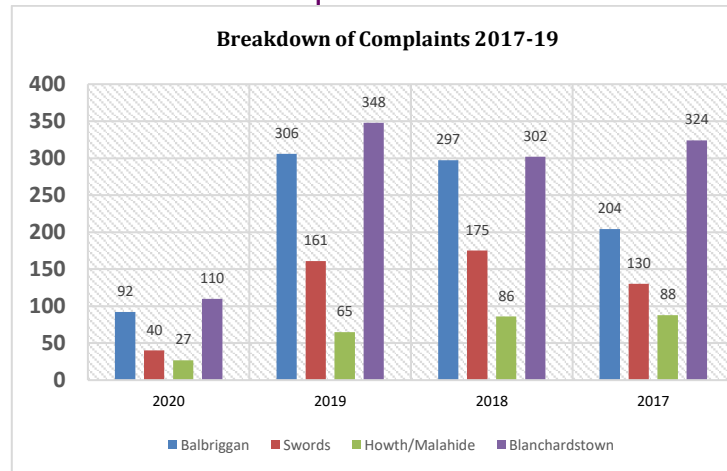
ASB complaints are still being received and are being followed up and investigated as normal, even within current COVID-19 related restrictions. Residents are being reminded of their obligations under social distancing where it comes to the

attention of the ASB unit that breaches have occurred within our estates.

### Total ASB Complaints Received



### Area Breakdown of Complaints



### Anti-Social Interventions

Interviews Held 2019	123
Interviews Held 2020	53
Tenancy Alerts 2019	30
Tenancy Alerts 2020	16
Tenancy Warnings 2019	4
Tenancy Warnings 2020	2
Tenant Induction Training 2019	12
Tenant Induction Training 2020	3

## Housing Inspections

Traveller Specific Inspections 2019	1818
Traveller Specific Inspections 2020	555
Estate Inspections 2019	944
Estate Inspections 2020	153
EM/ASB Inspections 2019	3858
EM/ASB Inspections 2020	866

## Examples of Estate Management Response to Covid-19 at Traveller specific sites & Group Housing Schemes



Pictured are the Housing Inspectors equipped with PPE preparing to deliver fun activity packs to children at Traveller specific sites & Group Housing Schemes



Estate Management in collaboration with their colleagues in the Library Department have distributed fun activity packs for children at Traveller specific sites & Group Housing Schemes. Pictured is a sample of activity pack



Children delighted to receive their fun activity packs

## Community Culture & Sports Division

### Community Development Office

**Fingal's Community Call Forum** was established in response to the Covid-19 crisis and is comprised of national and local public bodies and community organisations. The Forum has met weekly since 31 March in the presence of the Mayor and the Chief Executive who chairs the group. The Community response helpline operates 8am – 8pm seven days a week, the majority of requests are for the collection & delivery of food and other essential goods. Volunteers from local GAA clubs and community groups have assisted in providing these support services for vulnerable residents. We have also teamed up with ALONE as part of our support services for those who feel isolated and may be cut off from family and friends.

The ***"In This Together"*** initiative is the second phase of the Government's response to the crisis and the purpose is to encourage everyone to pick a new activity that will help them feel healthier and a little better. There are 3 themes under this initiative:

- Stay Connected
- Stay Active
- Stay Mentally Well

Fingal County Council has introduced some wellbeing initiatives including the following:

- Fingal Libraries – YouTube channel with story times, online classes, craft ideas and more
- Fingal Digifit – home workout videos for all ages by the Sports Office
- Cocooning Booklet – for those who have been self-isolating during the crisis
- Fingal Arts Office – online clinics for artists and live streaming projects
- Housing Information videos – suite of videos for people who need access to housing services
- Books for Traveller Children – a book gifting initiative
- Colouring Books distributed to all households in Fingal by the Economic, Enterprise & Tourism Development Dept.

- Special edition of Fingal News
- Fingal Comhairle na nÓg – tips for young people on how to use their spare time

### **Community Development Office Support to Local Response Groups**

Fingal County Council's Community Development Office has developed an initiative to support organisations who have established a Community Response to the Covid -19 crisis to support the Fingal Community Call along with those who have responded to the community response survey and who are mapped on the FPPN interactive map.

In the current Covid-19 crisis 28 community and voluntary groups, 25 GAA clubs, 2 community hubs have registered with Fingal's Community Call and 48 groups have linked with Fingal PPN to provide supports to the most vulnerable members of their communities.

The role of the community development officers is to link in with their assigned Response group once a week to:

(1) generally, encourage/ show appreciation for the groups' involvement in the Fingal Community Call helpline.

(2) ask the group

- are happy with how the tasks are being allocations

- have they any new learnings or tips that can be shared with other Local Response Groups

- are aware of any new needs/ concerns being raised by client/ service users

- are experiencing any barriers to delivering their service/ are specify needs

(3) Offer/ Share or advise local response groups on the delivery of the service (shared by other groups)

A database of issues or trends emerging from the community will be collated which will inform the work of the community office going forward through the Covid 19 crisis.



**Fingal 2020 COVID-19 Emergency Fund** is a grant scheme to provide funding to groups/organisations that are directly involved in the Fingal Community Call response and or responding locally to the COVID-19 pandemic. The scheme is funded by the Department of Rural and Community Development and administered by the Community Culture and Sports Division.

**What is the purpose the Fund?** The key objective of the fund is to provide support to community groups/ organisations mobilising a local community response to COVID-19 Community Call in Fingal. Priority will be given to groups providing front line services. Initiatives must strive to safeguard volunteers and support vulnerable members in your community.

**A grant of up to a maximum of €1000** for local groups that demonstrates a strong partnership/ collaboration of local community groups, are providing frontline services and safely responding to COVID-19 under the following themes of

- Supporting Community Safety initiatives
- Community wellbeing programme
- Virtual Community Gatherings
- Support target for older and vulnerable people

As of 5 May, 33 funding applications have been received across Blanchardstown (15), Balbriggan (6), Rush/Lusk (6), Howth/Malahide (3) and Swords (2). A total of €14,341 has been awarded across 21 community projects. Supports include provisions to facilitate a virtual choir, provision of PPE for Local Response Groups, material for activity packs for young and older people, material to make reusable mask for older people.

Given the emergency nature of COVID 19, the scheme is open and applications when received are processed online. Criteria and applications can be found on the link below.

<https://form.jotform.com/200864157081352>

**Balbriggan Women's Development Group** have been supported through the Fingal 2020 COVID-19 Emergency Fund. This group comprises of women

from a range of African countries who have embarked on sewing reusable masks for the vulnerable members in the Balbriggan community (people with underlying health condition and senior citizens). There has been a strong uptake and the group have delivered masks across the Fingal region. The contact number for the group is 087 282 9915.



**The COVID-19 Blakestown / Corduff Community Response Project** was set up to provide a support structure for older and vulnerable people cocooning and living in isolation during the Covid-19 lock down. Most clients were referred through a range of community organisations such as Suicide Awareness, Mulhuddart Drugs & Alcohol Project, Mountview Family Resource Centre, Estate Management Groups, Parslickstown House Management, Parish Priests and other Key Community Organisations. This project was set up as a collaboration between FCC, Corduff Community Centre and Blakestown Community Centre to provide a distribution hub for hot meals for a three-week period. However, over the weeks the project has grown from strength to strength with a team of 14 dedicated volunteers that check in on their assigned clients daily. The hubs are operated by Community Centre staff who co-ordinated the safe distribution of the food. The clients also receive a weekly telephone call to check in with them and see how they are managing. The project has received overwhelming response from local businesses, Dublin West Church, Touch Stone Pharmacy who have provided funding to cover the costs of the chilled meals until the 8<sup>th</sup> of May 2020.

Over the weeks the volunteers have built up a trust with their clients and are providing them with a friendly face and someone to listen to them. The project has received numerous donations including Carr Golf Club, other local suppliers and COVID-19 funding which has enabled the project to provide a weekend pack to each house with general supplies, items of interest such as jigsaws, wool, craft material, drawing and reading materials. This has proved to be very successful as most people have highlighted that the loneliness and long days are the hardest part to cope with. The project has also received support from a local garden centre that has provided a range of plants for each house. It is hoped that they will each make their own little memory garden to enjoy.



This project has helped in some way to alleviate some of the feelings of isolation for the clients. The project has developed a wind down plan whereby the clients will move across to North Side Home Care services to receive a daily meal. This will commence on the 11<sup>th</sup> of May. Clients will also be

provided with information that will direct them towards ALONE and other key support services to ensure that they have continued support going forward. It is envisaged that once the community facilities open again a plan will be put in place to encourage clients supported by the project to engage in their local community centres and join some of the already established groups and activities.

### Gardening project



As part of this response and in collaboration with Glascern Nurseries in Kilbride each client on the project will receive six plants in a personal plant container so they can create a memory garden to remind them of the project, their volunteers and the support they received during this time. It is hoped that the plants will bring positivity and some joy to each of the 76 people on the project.

### Cocooning Activities Booklet for those self-isolating during Covid-19

As part of a Fingal Wellbeing initiative and based on feedback received from volunteers linking with those living in isolation a working group was set up to develop an activities booklet for those Cocooning during Covid-19. FCC, Age Friendly Fingal, Castleknock Community Centre Laurel Lodge, Blakestown Community Centre, Corduff Community Centre and Huntstown Community Centre developed a 64-page activities booklet. The

booklet has been designed to cater for a wide range of audiences and particularly for those with dementia. The font and colour have been adapted and designed to meet these needs. The booklet also has a short story competition and it is hoped that we will catalogue all the short stories received in a memory book.

4,000 copies of the booklet have been printed and will be distributed across Fingal through a wide range of key agencies and stakeholders working with older and vulnerable adults. The booklet is available in hard and soft copy. The booklet contains a range of cross words, puzzles, sudoku, poetry, short stories, recipes and other interesting activities and will provide hours of enjoyable entertainment for those cocooning.



### Survey to local community and voluntary groups in relation to community response to Covid-19

Fingal PPN and Fingal County Council's Community Department conducted a survey of local community and voluntary groups responding to COVID-19. Groups have been requested to complete the short survey to find out what groups are providing services, what issues they are experiencing and what supports groups may need. Survey below:

<https://form.jotform.com/fingalppn/fingal-communityresponse-to-covid->

### #CoronavirusSolidarity diary of "good news stories"

Fingal PPN and Fingal County Council's Community Department are documenting a diary of "good news stories". These are stories that highlight the fantastic community spirit of Fingal in response to the ongoing Covid-19 crisis.

Groups have been asked to tell the PPN about community initiatives which have been set up to offer support to those most impacted by the crisis. They have been asked to share their stories, initiatives, poems, or examples of volunteers who are going above and beyond for their community. They have been asked to tag on Twitter @fingalppn, @fingalcommunity, @fingalcoco to share on the PPN Facebook page or log onto the PPN website [www.fingalppn.ie](http://www.fingalppn.ie) to show what they are doing to provide support to anyone impacted by the crisis.

**St. Sylvester's GAA Club - Great Community Spirit**  
**#CoronavirusSolidarity**  
**#CommunityCall**

28/04/2020

St. Sylvester's GAA Club have been busy for a number of weeks now helping with shopping, walking dogs and delivering groceries for the Community of Malahide.



### Covid-19 Information and News

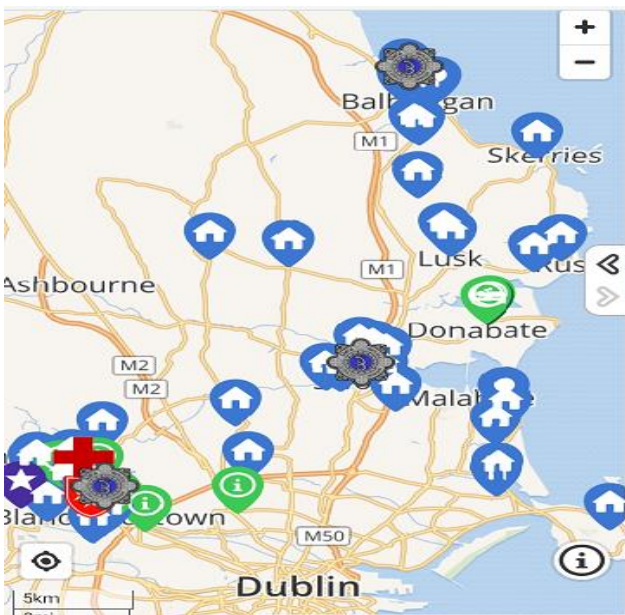
Fingal PPN have set up a dedicated page on the PPN website for Covid-19 Information and news. This section is updated with news from various verified sources such as Department of Rural and Community Development, HSE and Fingal Volunteer Centre.





### Map of Covid-19 Fingal Co-ordinated Response

Fingal PPN have mapped out organisations and volunteer groups in Fingal that have offered to help during the Covid-19 Emergency so if a person needs help or support, they can easily find a group nearby to assist them.



### Comhairle na nÓg

Weekly meetings have taken place since March and Comhairle members feedback on how they are coping at home, what they are spending their time doing and sharing good news stories about their week.

They are currently working on two topics - Peer Pressure and Climate Action. They have decided to do a video that demonstrates both positive and negative peer pressure.

As part of their Climate Action Topic they participated in World Earth Day on 22<sup>nd</sup> April 2020. They attended the virtual premiere of "The Story of Plastic" which was screened across the world as part of World Earth Day. They then attended an online discussion forum on 24<sup>th</sup> April 2020 to discuss and review the film.

The young people of Comhairle na nÓg have also been busy putting together a "lockdown" video showing their peers what way they have been spending their time positively during Covid19 restrictions. They have also included a piece on "its ok to be fed up, we all feel like that at times" and provided tips/suggestion to help their peers.

### Fingal Summer Projects Programme 2020

Fingal Summer Project Programme 2020 is aimed at Community/Volunteer Groups who provide recreational and educational services to young people during the summer across Fingal. To date 32 Summer Applications have been received for a wide range of exciting and varied projects, due to the current crisis it may be necessary to explore alternative activities if the normal events cannot proceed.

### Age Friendly Fingal

#### A pilot project Stay Connected Nursing Homes Acorn Project

The COVID-19 Pandemic has focused us on finding new ways to support others in our community, especially our older people, to stay connected to their families, friends and service providers. While those of us under the age of 70 may be somewhat restricted by social distancing, those who are over 70 have had to confine themselves to their homes with little or no physical contact, exercise and/or communication with the outside world. Day Care Community Service in Skerries along with others across the county has had to close its doors, and nursing homes in the locality, have had to restrict access to visitors in order to curtail the spread of the deadly virus.

To address this issue Skerries Age Friendly Town Working Group is working in collaboration with Skerries Community Association, Skerries Rugby Club, Dublin Integrated Care Programme for Older People and Age Friendly Fingal County Programme to deliver a pilot initiative that will target the most vulnerable in North County Dublin enabling them to keep in touch with family and friends while, at the same time, helping HSE Day Care workers keep in touch with clients. Age Friendly Fingal/Fingal County Council can assist in the delivery of a Smart Technology initiative that will help Age Friendly Skerries and the HSE in supporting our older people in local nursing homes and/or those who are confined to their own homes. The device known as 'ACORN', is an Age Friendly Smart Tablet, which is specifically designed for older people and is connecting generations. The device will remain the property of each nursing home and enable users to engage with their families and friends and continue to play an active role in their cocooned community. Additionally, with the support and guidance of the HSE's Integrated Care Service for Older People, the devices will be made available to nursing homes in the North County Dublin and through the Skerries Community Day Care Service to vulnerable people on a loan arrangement and will enable them to enjoy virtual contact with family and friends while in lockdown and beyond. The project is being rolled out on a pilot basis starting in the Skerries, Lusk and Rush areas of Fingal, hoping to expand when additional funds become available on proof of success.

#### Surviving Corona by Peig McManus

A member of Fingal Older Peoples Council produced a short video on surviving Corona Virus by Peig McManus as "Rose" is now up on YouTube and social media. This is the first of a 5 part series that will get people thinking about issues such as: 2) Legal matters - A living will and the importance of making a will, 3) Care preferences - Do Not Resuscitate, 4) Legal matters - Power of attorney, 5) Financial Matters - bank accounts pensions etc., Topics we all need to discuss but find hard to bring out into the open will be recorded by Ryan Platts

from our communications team, in an easy light-hearted way,.



#### Sports Office

The Sports Office has introduced the following online offerings to help keep children entertained and physically active, while having fun. All of these activities are available on <https://learning.fingal.ie/course>



We have compiled a number of videos demonstrating a broad range of different sports skills and activities that young people can try at home. We have developed the sports bingo score sheet, which you can find at the bottom of this page. The children's sports bingo can be downloaded, children work through the sheet and try a different skill everyday. The child simply clicks on each skill box and is taken to a video to see a demonstration of that particular skill.



## Fingal Sports Skills Bingo

<a href="#">Football Tennis</a>	<a href="#">Reactions Push The Button</a>	<a href="#">Skipping On One Leg</a>	<a href="#">Solo Alternate Feet</a>	<a href="#">Target Practice Kicking</a>
<a href="#">Throw Clap Catch 1 Clap</a>	<a href="#">Skipping In 3's</a>	<a href="#">Dribbling</a>	<a href="#">Balance On One Leg Arms Out</a>	<a href="#">Ball Bouncing</a>
<a href="#">Throw Catch Overhead</a>	<a href="#">Punt Kick No Bounce</a>		<a href="#">Target Practice Throwing</a>	<a href="#">Hopping</a>
<a href="#">Solo Run Bounce</a>	<a href="#">Reactions Punt Kick Numbers</a>	<a href="#">Keepy Uppies</a>	<a href="#">Jog On The Spot Skipping</a>	<a href="#">Throwing Catching 2 Hands 1 Hand</a>
<a href="#">Bunny Hop Skipping</a>	<a href="#">Skipping In Pairs</a>	<a href="#">Short Passing</a>	<a href="#">Throw Clap Catch Many Claps</a>	<a href="#">Ball Striking Hand</a>

#ActiveFingal

- the other options it will take 8 weeks to complete the Marathon 3 Days a week.
- The 3-day programme targets participants who are active and training regularly. The target is to complete 3 runs a week.

Over 8 weeks the families will complete the 42km Marathon. Registration details can be found on the above website.

### Fingal DigiFit

We continue to offer videos of a range of exercises that can be done at home. The next stage will be to offer a library of exercises with training tips and advice.

### Arts Office



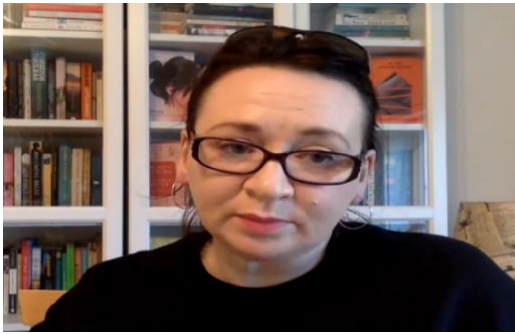
### Marathon Families

We are very conscious that it can be difficult to stay active, especially when there are children at home. We redesigned our very popular and successful Marathon Kids programme to challenge your whole family to complete a Marathon together. While staying within the Government restriction of 2k from home. Marathon Families can be completed in 3 ways

- The 7-day programme will see participants walking/jogging shorter distances each day of the week over 8 weeks.
- The 5-day programme will see medium length distances 5 days of the week. Like







### Let's Stay Together

Over the coming weeks Fingal Arts Office as part of its "Let's Stay Together campaign" will present several projects online through its digital media platforms including ongoing clinics with Artists and Communities, alongside a schedule of live and recorded elements announced weekly. The Programme Launch Event took place on Thursday, April 23 with content streamed through our social media platforms every Thursday going forward.

**Week 1:** Presented work by acclaimed Fingal writer **Lauren Foley**. This can be viewed at <https://vimeo.com/410960843>

**Week 2:** We presented a lively singing workshop for families and young audiences delivered by two accomplished musicians from Fingal - **Donal Kearney & Michael Dawson**. Available at: <https://vimeo.com/413533378>

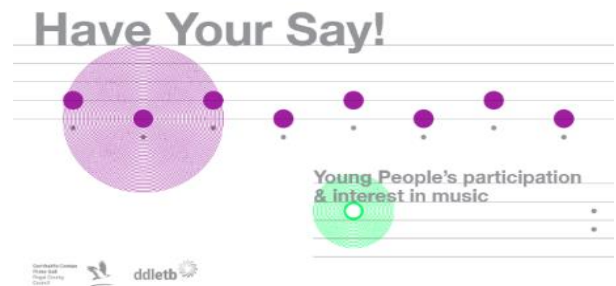
**Week 3:** We catch up with community partner – Gerry Lynders of Lynders Mobile home park and home to our long-standing project **Resort Residency**.

**Let's Stay Together while we're apart.** Clinics for artists and communities will be held every Wednesday 11am – 12noon, starting April 22. These meetings must be booked in advance:

- Professional Artists: Sarah O'Neill – [sarah.oneill@fingal.ie](mailto:sarah.oneill@fingal.ie) / 018906237
- Youth & Education: Julie Clarke – [julie.clarke@fingal.ie](mailto:julie.clarke@fingal.ie) / 01 890 5960
- Public Art: Caroline Cowley – [caroline.cowley@fingal.ie](mailto:caroline.cowley@fingal.ie) / 01 870 8449
- Community Sector: Rory O'Byrne – [rory.obyrne@fingal.ie](mailto:rory.obyrne@fingal.ie) / 01 890 5099

Live / recorded programme of performances, talks, projects and tutorials will be announced every Monday and will be aired every Thursday from week of April 20.

### Music Generation: Public Consultation



Fingal Arts Office is working in partnership with the Dublin and Dún Laoghaire Education and Training Board to make an application to Music Generation for funding to extend and enrich each partners' commitment to the music education of children & young people in Fingal. A Public Consultation Campaign was launched in April to gather data to support this application. Surveys regarding access to performance music education for children and

young people in the county have been issued to interest groups, stakeholders and the public. This phase is important to the application process and will enable the partners to develop and deliver music education programmes that suit the needs of those aged 0 – 18 years going forward.

We invite **Children & Young People** to complete this survey:

<https://www.surveymonkey.com/r/FingalMusicYoungPeople>

We invite **Schools, Music Education Providers & Musicians** to complete this survey:

<https://www.surveymonkey.com/r/FingalMusicProviders>

We invite the **General Public** to complete this survey:

<https://www.surveymonkey.com/r/FingalMusicGeneralPublic>

If you have any queries, please contact Fingal County Council's Youth & Education Officer [julie.clarke@fingal.ie](mailto:julie.clarke@fingal.ie)

## LIBRARIES

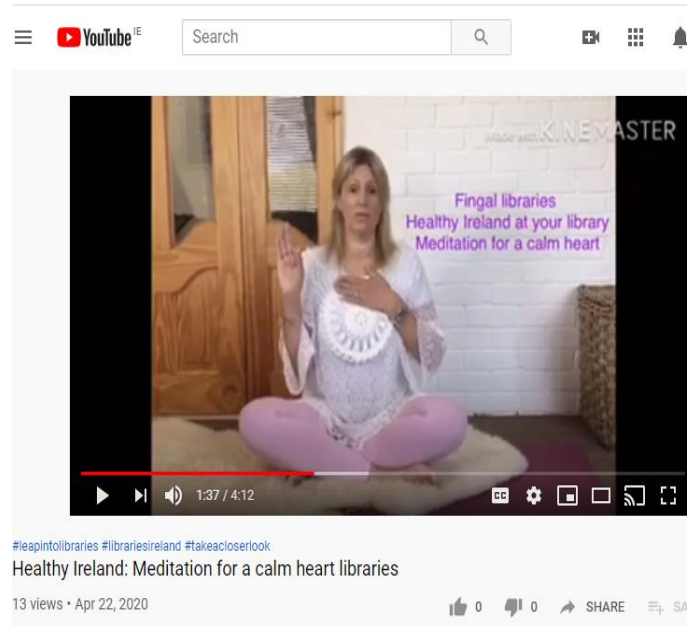
### Moving the library to the digital space

Our buildings are closed but our services are not. The conversation with our borrowers is being kept open by a hugely enhanced social media presence across Twitter, Facebook and Instagram. This includes regularly scheduled posts across the whole week on subjects such as creative writing, good news Tuesday, book recommendations and our very popular 21-day Irish language challenge. Blogs on a range of subjects are published regularly by a variety of staff.

Digital content creation has also become very important. Staff and facilitators have created a large volume of content including story times, online photography classes and other arts activities. Content creation in relation to the area of wellbeing including mindfulness, personal resilience and yoga has been started. All material is available on Fingal Libraries youtube channel <https://tinyurl.com/yd9tj54e>



YouTube Search 3:02



### The Cocooning Library

We are very pleased to inform you that the Housebound library service resumed on the 5<sup>th</sup> May, with an additional service for cocooners in Fingal. For more information or to request the service, please email [cocooning.library@fingal.ie](mailto:cocooning.library@fingal.ie) or telephone the Community Response Helpline on Freephone 1800 459 059 or 01 8905000. Operating from Blanchardstown Library, all social distancing and HSE approved health and safety



measures in relation to the handling of books are in place.

### Re-opening of libraries

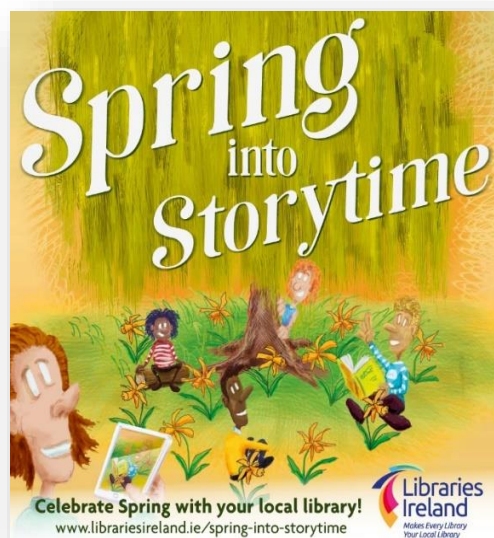
The Government's roadmap for easing COVID-19 restrictions which was announced on 1st May, states that public libraries can re-open to the public from 8th June. We are currently developing a plan to determine the safest way to move towards a phased re-opening of libraries in Fingal. Central to this plan is the ability to comply fully with Department of Health guidelines regarding social distancing and other COVID-19 preventative measures. We will ensure that members are kept informed as we begin to re-open services at our branch libraries.



To celebrate **Poetry Day Ireland 2020** on the 30th April, Fingal Libraries invited entries to our annual poetry competition. The theme for the competition this year was "There will be Time..... <https://www.fingal.ie/news/poetry-day-2020-competition>

There were a total of 49 entries. These entries were across 3 categories – Adult, Teenager and Child. The winners were announced on Friday 24th April by the Mayor of Fingal, Cllr. Eoghan O'Brien <https://www.youtube.com/watch?v=8LQtLGDjajs>

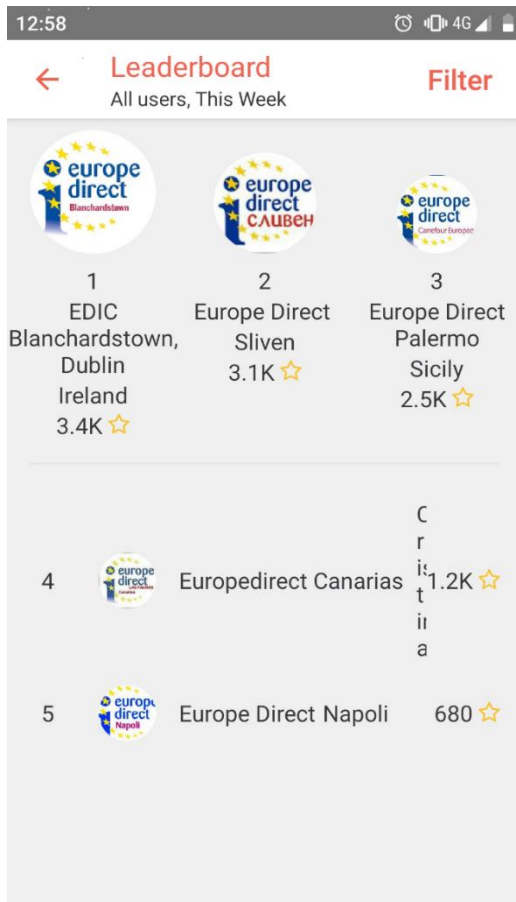
Listen to Fingal Libraries staff member and poet, Máighréad Medbh, discussing the competition entries and reciting the junior category winners' poems, and the adult winner reciting her own winning poem at <https://www.youtube.com/watch?v=-h1iDzhUvdU&t=13s>



**Spring into Storytime**, moved online during COVID-19. Fingal libraries Storytime sessions have been uploaded onto the Fingal Libraries You Tube channel and are also available on the Libraries Ireland website at <https://www.librariesireland.ie/services/right-to-read/spring-into-storytime/digital-storytimes>

A number of Fingal Libraries staff are in the process of preparing more Storytime sessions and these will be uploaded as soon as they are ready. We will have an even spread of story time sessions curated by Fingal Libraries during Spring into Storytime throughout the designated months of April and May.

## Number one in the EU for Blanchardstown Library Europe Direct Centre!



The Europe Direct Information Centre at Blanchardstown Library may not be physically open at the moment, but staff have been busier than ever with plenty of online queries and social media activity and with sharing important news and information on the EU and Ireland's response to the Covid-19 crisis. Each week, the Centre has focused on a different EU country, posting facts and videos about a new EU neighbour every few days. This is part of our lead up to Europe Day (9th May). On the day itself, we plan to link up with our friends around Europe via video to ask questions about life in their home countries. Europe Direct Blanchardstown is currently the number one centre in the EU (out of more than 500) for social

media activity. It has been in the top ten before but this is the first time it has reached the top of the leader board.

Our **e-services** are enjoying enormous popularity at present, as library users continue to enjoy the virtual library space. Our figures show that there was a 72% increase in the use of e-services during the month of April, with digital newspapers, magazines, audio books and e-books proving to be the most popular.

Two of the Libraries Department's **3D printers** have been donated for use in the production of face shields for front line staff during the COVID-19 crisis. Our picture shows Thomas Marry, from Surfbox, the company which provides our 3D printers, collecting the printer from Blanchardstown Library.



## ENVIRONMENT & CLIMATE ACTION (ECA)

Contents	
<b>Environment &amp; Climate Action</b>	
Environmental Awareness	Balleally Landfill/Rogerstown Park
Climate Action	Litter Management
Circular Economy	Dog Warden Service
Water Quality Protection	Waste Enforcement
Bathing Water Quality	
	<b>Water Services</b>
	Operations

### ENVIRONMENT

#### Environmental Awareness



The 'Activities in Nature Competition' was launched and promoted on social media. The aim is to increase knowledge of the wide spectrum of native plants and wildlife that we have around us.

Pollination and biodiversity is of the utmost importance so we have a promotional campaign on bee-friendly gardening and farming. Stocks of bird books and recycling magnets were included in the Housing Department initiative - packs for children of the travelling community.

The Sports Sustainability Competition (for rugby and soccer clubs) deadline has passed, applications are being assessed currently and those to be awarded funding of €1,500 will be announced in May.

Earth Day 2020 April 22<sup>nd</sup> saw the Global Online Screening of the new documentary 'The Story of Plastic'. This was hosted by Clean Coasts (An Taisce) and we made a contribution to support the promotion.

The documentary can be viewed online by registering to view a screening, for more information visit <https://www.eventbrite.ie/d/online/the-story-of-plastic/> and

<https://www.storyofstuff.org/movies/plastic/>

Apartment Living is becoming increasingly available in Ireland. However the vast majority of apartments are not served with food waste options by their management companies or the waste contractors. Instead of being viewed as domestic waste it is seen as commercial waste. Read this report <https://www.fingal.ie/sites/default/files/2020-05/report-on-the-northwood-brown-bin-projectportrait.pdf> by the Eastern Midlands Regional Waste Office who carried out a pilot study in cooperation with Fingal County Council Environmental Awareness Officer in 2019. The study was carried out in the Northwood Apartments in Santry.



## Circular Economy

### Water Quality Protection

#### Water Framework Directive, Third Cycle Plans Update:

Ireland is currently preparing the third cycle (*Ireland's 2022-2027 River Basin Management Plan*) River Basin Management Plan (RBMP) under the Water Framework Directive. The preparation of the plan is a function of the Environmental Protection Agency (EPA) which it does in consultation with stakeholders including Local Authorities, Local Authorities Waters Programme and Inland Fisheries Ireland. The plan is due to be completed by December 2021. Two key elements in preparing the plan are the selection of water bodies for action and the identification of significant water management issues.

#### (I) Areas for Action;

The EPA have recently put out a call to Local Authorities, Local Authorities Water Programme and other state stakeholders for proposals towards the selection of Areas for Action which will form the focus for water body restoration, protection and research during the period of the third cycle, 2022-2027. They are particularly interested in proposals related to high status objective waterbodies, water bodies in protected areas, those that have deteriorated or are at risk of deterioration. Fingal County Council has engaged in this process and all proposed water bodies will be reviewed with The Environmental Protection Agency and other state stakeholders during a workshop to be held in September 2020.

#### (II) Public Consultation in identifying Significant Water Management Issues.

The Department of Housing, Planning and Local Government (DHPLG) has published a consultation document outlining the Significant Water Management Issues for the third River Basin Management Plan for Ireland. Details are available on the Department's website here <https://www.catchments.ie/public-consultation-significant-water-management-issues-for->

[irelands-2022-2027-river-basin-management-plan/](https://www.catchments.ie/public-consultation-significant-water-management-issues-for-irelands-2022-2027-river-basin-management-plan/)

The consultation period closes on Friday 26<sup>th</sup> June, 2020.

The Environmental Protection Agency has recently made chemistry data of water bodies available for download at [www.catchments.ie](http://www.catchments.ie).

### Bathing Water Quality



The monitoring of bathing water will begin again in mid-May with a pre-season sample. The bathing season starts 1<sup>st</sup> June and ends 15<sup>th</sup> September. Monitoring results will be published on [www.beaches.ie](http://www.beaches.ie). On this website you will also find bathing water profiles for each beach which give more information about each site including how to access the bathing water and the type of facilities at a beach location.

The general water quality condition of each beach is described by a classification status – excellent, good, sufficient or poor – derived from four years of monitoring data and assessed by the Environmental Protection Agency (EPA). These classifications are calculated at the end of one season for display at the start of the following season. The current classifications are based on data from the years; 2016, 2017, 2018 and 2019.

From this assessment we have two beaches in Fingal which have improved water quality status since 2019. These beaches are Balcarrick Beach, Donabate and Rush South Beach (aerial view of

both shown above). See below table of the current EPA classifications and improvements.

	Beach Name	Status 2019	Change from 2019
1	Balbriggan, Front Beach	Sufficient	↔
2	Skerries, South Beach	Good	↔
3	Loughshinny Beach	Good	↔
4	Rush, South Beach	Good	↑
5	Rush, North Beach	Good	↔
6	Portrane, The Brook Beach	Poor	↔
7	Donabate, Balcarrick Beach	Good	↑
8	Portmarnock, Velvet Strand Beach	Excellent	↔
9	Sutton, Burrow Beach	Excellent	↔
10	Howth, Claremont Beach	Sufficient	↔

Most of Fingal beaches' individual scheduled sampling results in 2019 were generally meeting "excellent" status, with 3% of samples ranked "sufficient" or "poor".

The Brook, Portrane, beach continues to be of 'Poor' status, and an all season advisory notice "Not to Swim" will continue in place at this beach for 2020. The cause of the poor water quality is unclear. The Portrane treatment plant is operating well and has UV disinfection. Neither has the poor

water quality been attributed to overflows from the wastewater collection system. Investigations have been undertaken and will continue in order to identify the source of the faecal contamination, be it from animals, stormwater pipes or streams discharging to Rogerstown estuary

Any queries on water quality during the bathing season can be emailed to the bathing water quality team at [www.bathingwaters@fingal.ie](mailto:www.bathingwaters@fingal.ie)

### Litter Management

Litter Patrols continue with particular emphasis on illegal dumping at bottle banks and textile recycling facilities across the county. The Litter Wardens are in close contact with the Operations crews to ensure the timely removal of any illegally deposited material. In addition to this, daily reports in relation to the conditions at all bottle banks and textile recycling facilities are sent directly to the Environment Division to ensure the contractor is contacted in real time in relation to issues arising.

A coordinated regional and local message aimed at highlighting and reducing illegal dumping was launched at the start of May.



## Dog Warden Service

The current Dog Warden Service has been expanded to take account of the rise in the number of people walking in our parks, beaches and open spaces with their dogs.

There are now 4 Dog Wardens on duty at all times to ensure compliance with the Control of Dogs Act 1986.

## Waste Enforcement

### ELV Project 2020

Unauthorised End of Life Vehicle (ELV) sites have been highlighted as a National Waste Enforcement Priority for 2020. Unauthorised storage and dismantling of ELV's poses a significant risk to the environment. ELV's contain a range of hazardous materials such as waste oils, lead acid batteries, fluids including lubricating oil, coolant, brake fluid which can have a significant effect on the environment if not depolluted and disposed of properly.

Fingal County Council's Waste Enforcement Unit has identified several unauthorised ELV sites operating illegally within Fingal. The Waste Enforcement Unit plan to regularise/close all unauthorised sites operating without a waste facility permit during 2020.

To assist with the ELV project a number of applications have been submitted under the Anti-Dumping Initiative 2020 specifically targeting illegal scrap yards. A multi agency approach involving An Gardai Siochana, Revenue and Social Protection will be required to tackle a number of these high risk sites.

An ELV awareness campaign is planned for June and July to highlight issues on illegal breaking yards and to provide guidance on how to dispose of your old car in an environmentally safe manner. 85% of your old car can be recycled if brought to a permitted facility which supports the

circular economy and it's a free service. Further information can be found at [www.elves.ie](http://www.elves.ie).



## Waste Complaints

Local Authority waste enforcement, as a designated essential service, is ongoing and complaints lines remain open. Waste enforcement officers continue to investigate complaints on a priority basis through the implementation of social distancing measures and strict hygiene practices. An increase in the number of complaints has been noted recently with the majority of complaints relating to household waste storage and small scale illegal dumping. Regular patrols are being undertaken on a weekly basis at known black spot locations as a preventative measure and enforcement action will be taken if sufficient evidence is gathered on a case by case basis.





## **Waste Management**

Primary waste activities including disposal, processing and collection are continuing as normal. The Regional Waste Management Offices supported by DCCAE, have produced a radio ad emphasising the continuity of waste services and potential sanctions for illegal activities such as fly tipping and illegal waste collection services. This ad will run nationally and locally over the coming weeks. DCCAE has also ring-fenced €1 million of the 2020 National Anti-Dumping Initiative allocation for measures that will stop illegal dumping and catch the perpetrators.

## **WATER SERVICES**

### **Operations**

Water and Drainage Services continue to be provided as agreed in the Service Level Agreement with Irish Water.

In advance of the Bathing Water Season, FCC Water Services, have been carrying out extensive Pump Station desludging and network and M&E maintenance works to ensure efficient operation of these facilities. The desludging programme will continue for the coming month and ongoing monitoring of these facilities and the networks will be carried out throughout the Bathing Season to try to minimise and prevent any overflows to Bathing Waters and reduce any impact upon these waters.

# FINANCE

Contents
Financial Reports

## Finance

We note the recent announcement from Government with regards to a 3 months rates waiver scheme for businesses forced to close due to public health requirements. We await further details on this scheme from DHPLG including eligibility, administration etc.

Our rate collectors continue to engage with rate payers that are having difficulty with making rate payments.

We continue to keep our financial position under review as the Covid 19 emergency continues to evolve.

### Financial Reports

Refer to Appendix 1 for the following reports:-

- Revenue Account Income & expenditure to 30<sup>th</sup> April , 2020
- Capital Account Income & Expenditure to 30<sup>th</sup> April, 2020
- Summary of Corporate Debtors to 30<sup>th</sup> April , 2020

## APPENDIX 1

### REVENUE ACCOUNT INCOME & EXPENDITURE SUMMARY BY SERVICE DIVISION AT 30TH APRIL 2020

		EXPENDITURE			INCOME			NET
		Expenditure	Adopted Full	% Budget	Income	Adopted Full	% Budget	
		€	Year Budget	Spent to	€	year Budget	Raised	€
			€	date		€		
A	Housing & Building	19,696,636	64,668,499	30%	20,499,959	67,692,700	30%	-803,323
B	Road Transport & Safety	7,464,676	23,627,200	32%	2,054,901	6,609,400	31%	5,409,775
C	Water Services	5,903,383	13,535,000	44%	5,784,850	17,109,500	34%	118,533
D	Development Management	4,379,858	15,538,700	28%	1,110,512	4,285,700	26%	3,269,346
E	Environmental Services	13,850,025	42,952,600	32%	1,950,779	6,679,000	29%	11,899,246
F	Recreation & Amenity	10,980,141	34,225,501	32%	592,942	1,691,300	35%	10,387,199
G	Agriculture, Education, Health & Welfare	242,214	900,300	27%	67,649	210,100	32%	174,565
H	Miscellaneous Services	9,625,633	29,041,500	33%	2,183,947	6,282,400	35%	7,441,686
J	Central Management Charge	14,876,467	45,480,800	33%	904,861	3,031,800	30%	13,971,606
LG	Local Property Tax / GPG				2,509,500	7,528,500	33%	-2,509,500
RA	Rates				49,616,567	148,849,700	33%	-49,616,567
		<b>87,019,033</b>	<b>269,970,099</b>	<b>32%</b>	<b>87,276,467</b>	<b>269,970,099</b>	<b>32%</b>	<b>-257,434</b>



### CAPITAL ACCOUNT

		Balance at 01/01/2020 €	Expenditure YTD €	Income YTD €	Balance at 30/04/2020 €
A	Housing & Building	-34,769,683	45,678,844	-33,309,903	-22,400,742
B	Road Transport & Safety	23,343,348	12,861,015	-369,444	35,834,919
C	Water Services	-13,308,684	821,212	-483,754	-12,971,226
D	Development Management	-108,255,205	3,296,081	-9,416,540	-114,375,664
E	Environmental Services	-12,699,108	1,842,757	-834,926	-11,691,277
F	Recreation & Amenity	-849,613	5,220,928	-495,552	3,875,763
H	Miscellaneous Services	-38,171,040	1,877,173	-8,109,684	-44,403,551
	<b>Total</b>	<b>-184,709,985</b>	<b>71,598,009</b>	<b>-53,019,803</b>	<b>-166,131,779</b>

NB\*\*\*

The Opening Balance for 2020 is subject to change as the AFS 2019 is not finalised

**SUMMARY OF CORPORATE DEBTORS TO 30/04/2020**

	Balance at 01/01/2020	Balance at 30/04//2020	Current debt	> 1 Year
	€	€	€	€
<b>RATES</b>	<b>4,906,810</b>	<b>102,878,246</b>	<b>100,709,159</b>	<b>2,169,087</b>
<b>LOANS</b>	<b>1,363,067</b>	<b>1,449,021</b>	<b>328,048</b>	<b>1,120,973</b>
<b>RENTS</b>	<b>5,100,489</b>	<b>5,588,841</b>	<b>3,128,855</b>	<b>2,459,986</b>

*Figures for rents and loans are unadjusted by credits/prepayments*