

Legend

- Study Area
- Mid 20th Century Broad Type combined with Relict Landuse**
- Bronze Age, Enclosure
- Early Medieval, Enclosure
- Early Medieval, Settlement
- Medieval, Designed landscape
- Medieval, Enclosure
- Medieval, Industrial
- Medieval, Settlement
- Neolithic, Enclosure
- Neolithic, Military
- Neolithic, Settlement
- None, Communication
- Post Medieval, Coastal
- Post Medieval, Communication
- Post Medieval, Designed landscape
- Post Medieval, Enclosure
- Post Medieval, Industrial
- Post Medieval, Military
- Post Medieval, Settlement
- Post Medieval, Woodland
- Prehistoric, Coastal
- Prehistoric, Enclosure
- Prehistoric, Settlement
- Unclassified, Coastal
- Unclassified, Enclosure
- Unclassified, Recreation

Includes Ordnance Survey Ireland data reproduced under OSI Licence number 2003/07/CCMA/Fingal County Council. Unauthorised reproduction infringes Ordnance Survey Ireland and Government of Ireland copyright. © Ordnance Survey Ireland, 2006.



REVISIONS:	BY:	DATE:	REV:

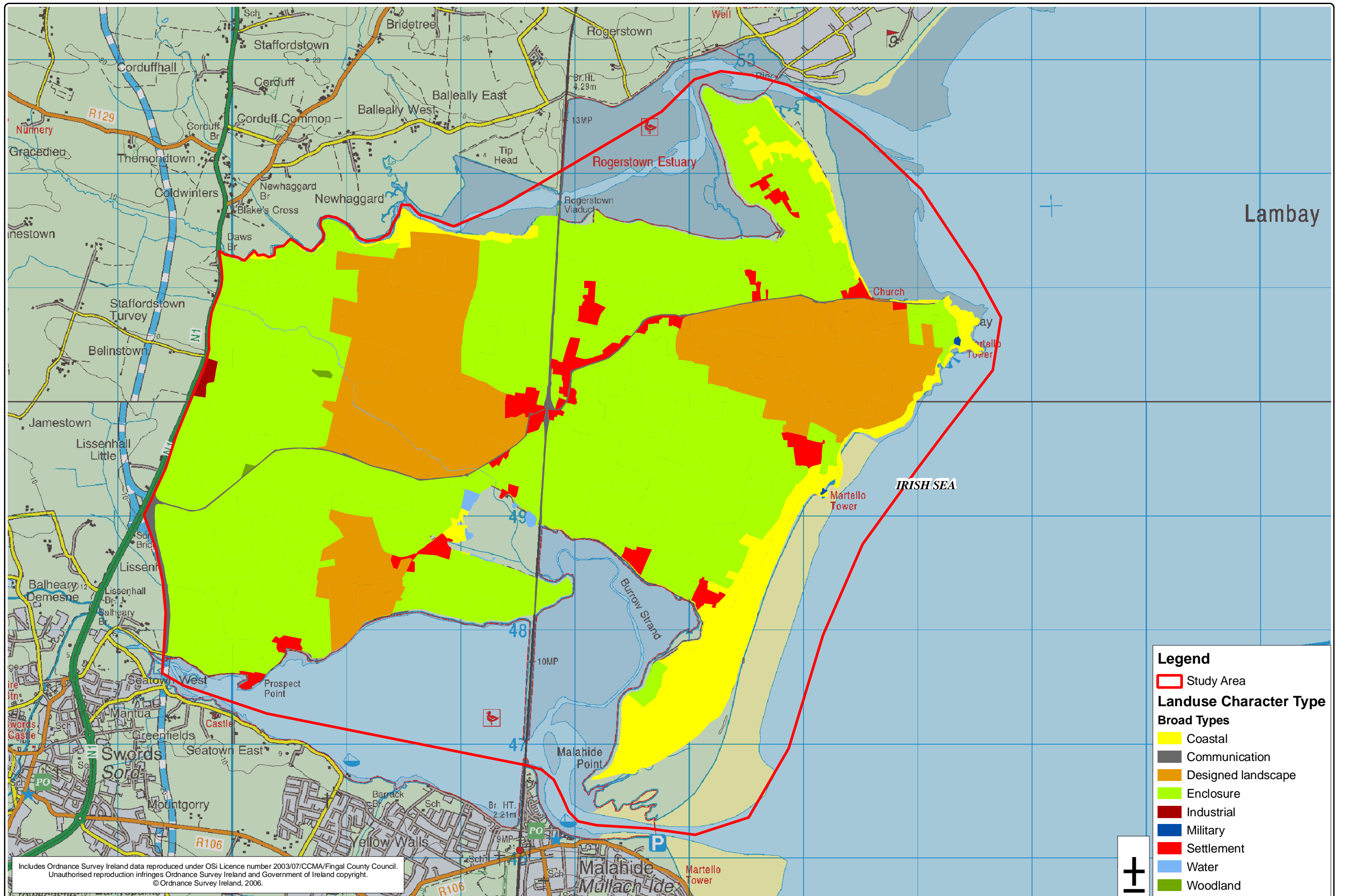
ARCHAEOLOGICAL LICENCE:	n/a
PRODUCED BY:	KG
DATE SURVEYED:	n/a
CHECKED BY:	LC
DATE ISSUED:	28-02-2007

PROJECT:	Historic Landscape Characterisation - Donabate-Portrairie Peninsula
TITLE:	Time Slice - Mid 20 th Century (1935-38) combined with Relict Landuse
CLIENT:	Fingal County Council and The Heritage Council

JOB NO.	06101
DRAWING NO.	06101-16
FIG. NO.	FIG. A8
SCALE:	1/30,000

27 Merrion Square
Dublin 2
Tel: 01-7997200
Fax: 01-7997201
Email: archaeology@mglarc.com
www.mglarc.com

Margaret Gowen & Co. Ltd
Archaeological Consultants & Project Managers



Includes Ordnance Survey Ireland data reproduced under OSI Licence number 2003/07/CCMA/Fingal County Council. Unauthorised reproduction infringes Ordnance Survey Ireland and Government of Ireland copyright. © Ordnance Survey Ireland, 2006.

Legend

- Study Area

Landuse Character Type

Broad Types

- Coastal
- Communication
- Designed landscape
- Enclosure
- Industrial
- Military
- Settlement
- Water
- Woodland



REVISIONS:	BY:	DATE:	REV:

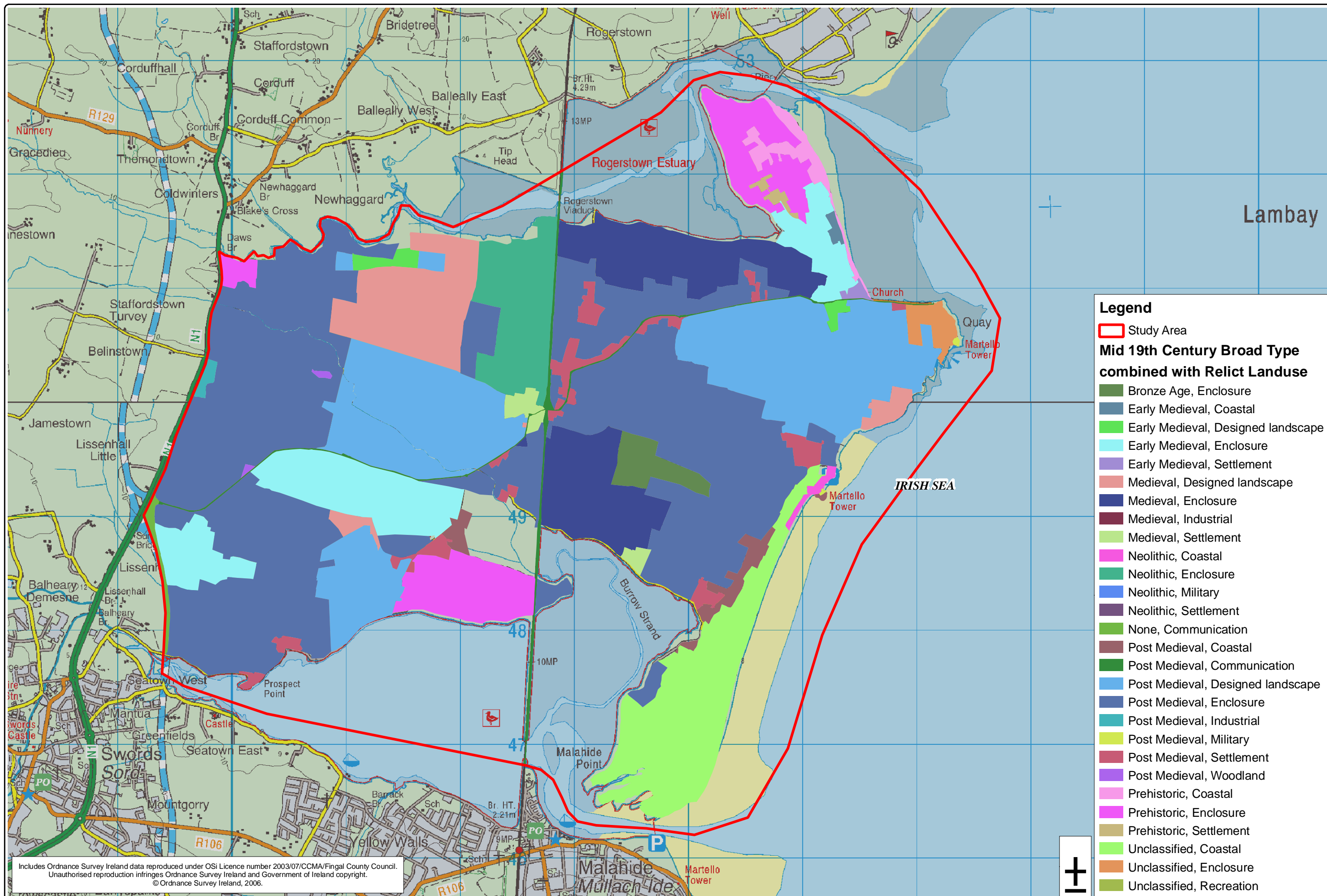
ARCHAEOLOGICAL LICENCE:	n/a
PRODUCED BY:	KG
DATE SURVEYED:	n/a
CHECKED BY:	LC
DATE ISSUED:	28-02-2007

PROJECT:	Historic Landscape Characterisation - Donabate-Portrairie Peninsula
TITLE:	Time Slice - Mid 19 th Century (1837-43)
CLIENT:	Fingal County Council and The Heritage Council

JOB NO.	06101
DRAWING NO.	06101-17
FIG. NO.	FIG. A9
SCALE:	1/30,000


Margaret Gowen & Co. Ltd
 Archaeological Consultants & Project Managers

27 Merrion Square
 Dublin 2
 Tel: 01-7997200
 Fax: 01-7997201
 Email: archaeology@mglarc.com
 www.mglarc.com



Legend

Study Area

Mid 19th Century Broad Type combined with Relict Landuse

- Bronze Age, Enclosure
- Early Medieval, Coastal
- Early Medieval, Designed landscape
- Early Medieval, Enclosure
- Early Medieval, Settlement
- Medieval, Designed landscape
- Medieval, Enclosure
- Medieval, Industrial
- Medieval, Settlement
- Neolithic, Coastal
- Neolithic, Enclosure
- Neolithic, Military
- Neolithic, Settlement
- None, Communication
- Post Medieval, Coastal
- Post Medieval, Communication
- Post Medieval, Designed landscape
- Post Medieval, Enclosure
- Post Medieval, Industrial
- Post Medieval, Military
- Post Medieval, Settlement
- Post Medieval, Woodland
- Prehistoric, Coastal
- Prehistoric, Enclosure
- Prehistoric, Settlement
- Unclassified, Coastal
- Unclassified, Enclosure
- Unclassified, Recreation

Includes Ordnance Survey Ireland data reproduced under OSI Licence number 2003/07/CCMA/Fingal County Council. Unauthorised reproduction infringes Ordnance Survey Ireland and Government of Ireland copyright. © Ordnance Survey Ireland, 2006.



REVISIONS:	BY:	DATE:	REV:

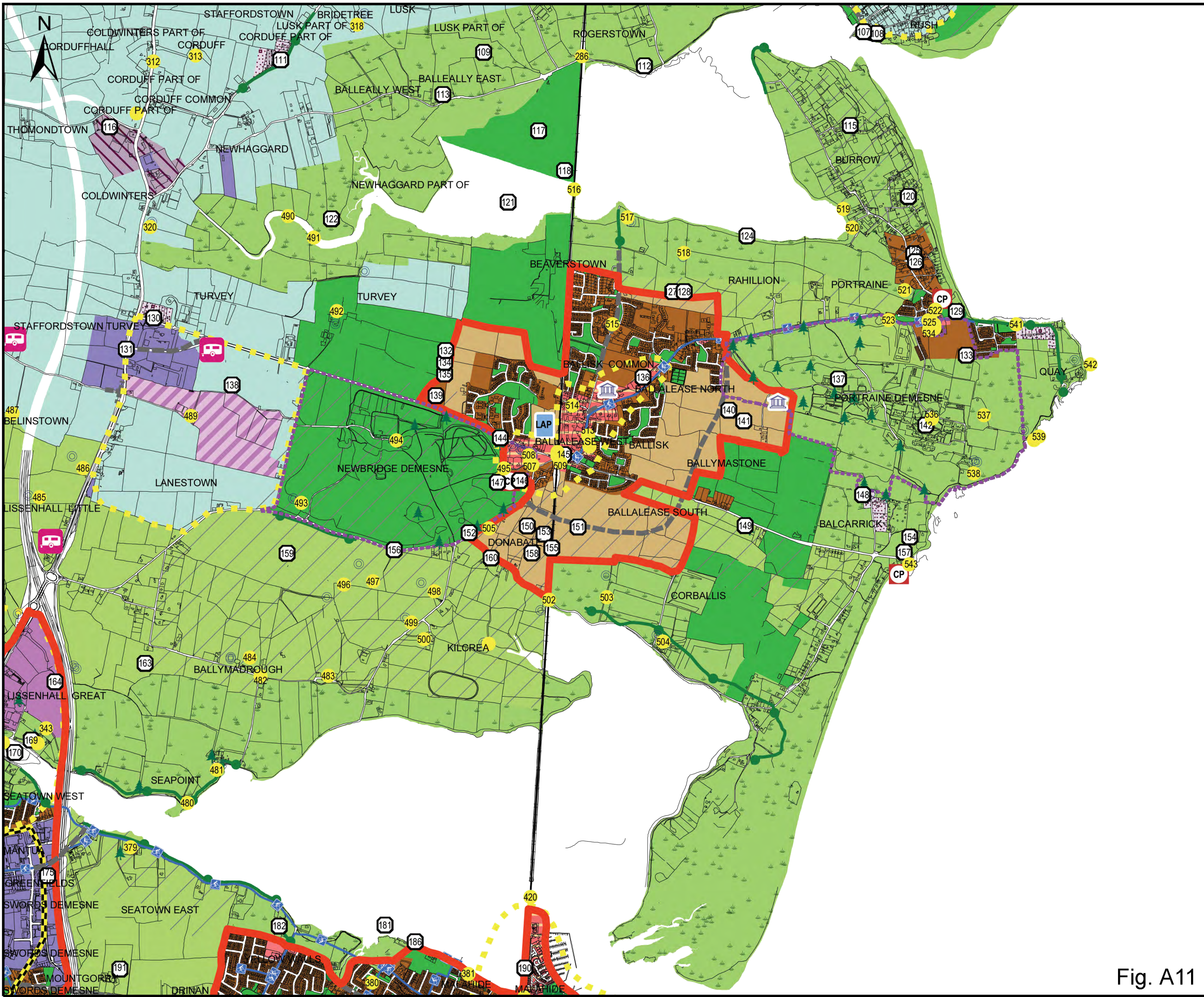
ARCHAEOLOGICAL LICENCE:	n/a
PRODUCED BY:	KG
DATE SURVEYED:	n/a
CHECKED BY:	LC
DATE ISSUED:	28-02-2007

PROJECT:	Historic Landscape Characterisation - Donabate-Portraine Peninsula
TITLE:	Time Slice - Mid 19 th Century (1837-43) combined with Relict Landuse
CLIENT:	Fingal County Council and The Heritage Council

JOB NO.:	06101
DRAWING NO.:	06101-18
FIG. NO.:	FIG. A10
SCALE:	1/30,000

27 Merrion Square
Dublin 2
Tel: 01-7997200
Fax: 01-7997201
Email: archaeology@mglarc.com
www.mglarc.com

Margaret Gowen & Co. Ltd
Archaeological Consultants & Project Managers



Fingal Development Plan 2005 - 2011

DONABATE

Zoning Objectives

- Objective RS To provide for residential development and to protect and improve residential amenity.
- Objective RS1 To provide for new residential communities in accordance with approved local area plans and subject to the provision of the necessary social and physical infrastructure.
- Objective MC To protect, provide for and/or improve major town centre facilities.
- Objective SC To protect and enhance the special physical and social character of major suburban centres and provide and/or improve urban facilities.
- Objective NC To protect, provide for and/or improve neighbourhood centre facilities.
- Objective GI1 To facilitate opportunities for general industrial employment and related uses in industrial areas.
- Objective GI2 To facilitate opportunities for general industrial employment and related uses in new industrial areas in accordance with an approved local area plan.
- Objective ST To facilitate opportunities for science and technology based employment.
- Objective ST1 To facilitate opportunities for science and technology based employment and associated and complementary uses in a high quality environment in accordance with an approved local area plan.
- Objective WD To provide for distribution, warehouse, storage and logistics facilities which require good access to the major road network within a good quality environment.
- Objective DA To ensure the efficient and effective operation of the airport in accordance with an Airport Action Plan.
- Objective RU To protect and provide for the development of agriculture and rural amenity.
- Objective RV1 To protect the special character of rural villages and provide for improved village facilities and local housing need in accordance with approved local area plans and infrastructure provision.
- Objective RC To protect residential amenity and the character of settlement clusters and provide for small scale infill development to serve local needs.
- Objective RB To provide for and facilitate the provision of agri-business uses.
- Objective GB To protect and provide for a green belt to demarcate the urban and rural area and provide for agriculture and amenity in a manner that protects the physical and visual amenity of the area.
- Objective HA To protect and improve high amenity areas.
- Objective OS To preserve and provide for open space and recreational amenities.

Specific Objectives

- Sensitive Landscapes
- Howth SAA Buffer Zone
- Liffey Valley SAAO & Howth SAAO
- Designated nature conservation areas (See landscape and Natural Heritage Sheet for details)
- To protect and/or provide for a Burial Ground
- Development Boundary
- Road Proposal
- Rail Proposal
- Metro Proposal
- Quality Bus Corridor
- Indicative Cycle Network
- To Preserve Views
- Master Plan Area
- Zone of Archaeological Potential
- Urban Centre Strategy / Study Area
- Architectural Conservation Area
- Car Park
- To provide for residential development at a density per hectare as shown.
- Seveso Site
- All development shall comply with the adopted local area plan or action area plan.
- Local Objectives
- Coastal walk
- Future Employment Node
- To identify and protect a route for the proposed Orbital Metro
- Proposed School
- To provide for a Neighbourhood Centre
- To provide for Traveller Accommodation
- To protect & preserve Trees, Woodlands and Hedgerows
- Protected Structures
- Recorded Monuments




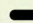




Map Index

Map No. DB1

Scale: 1:24,000

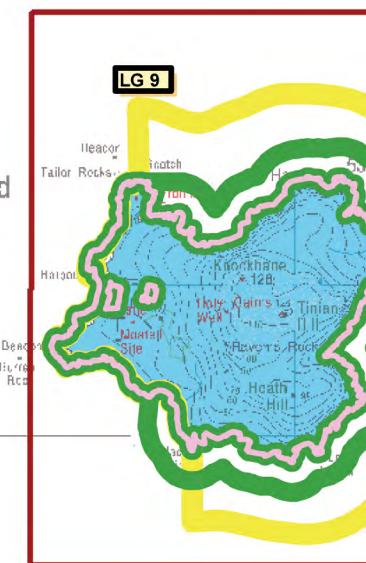
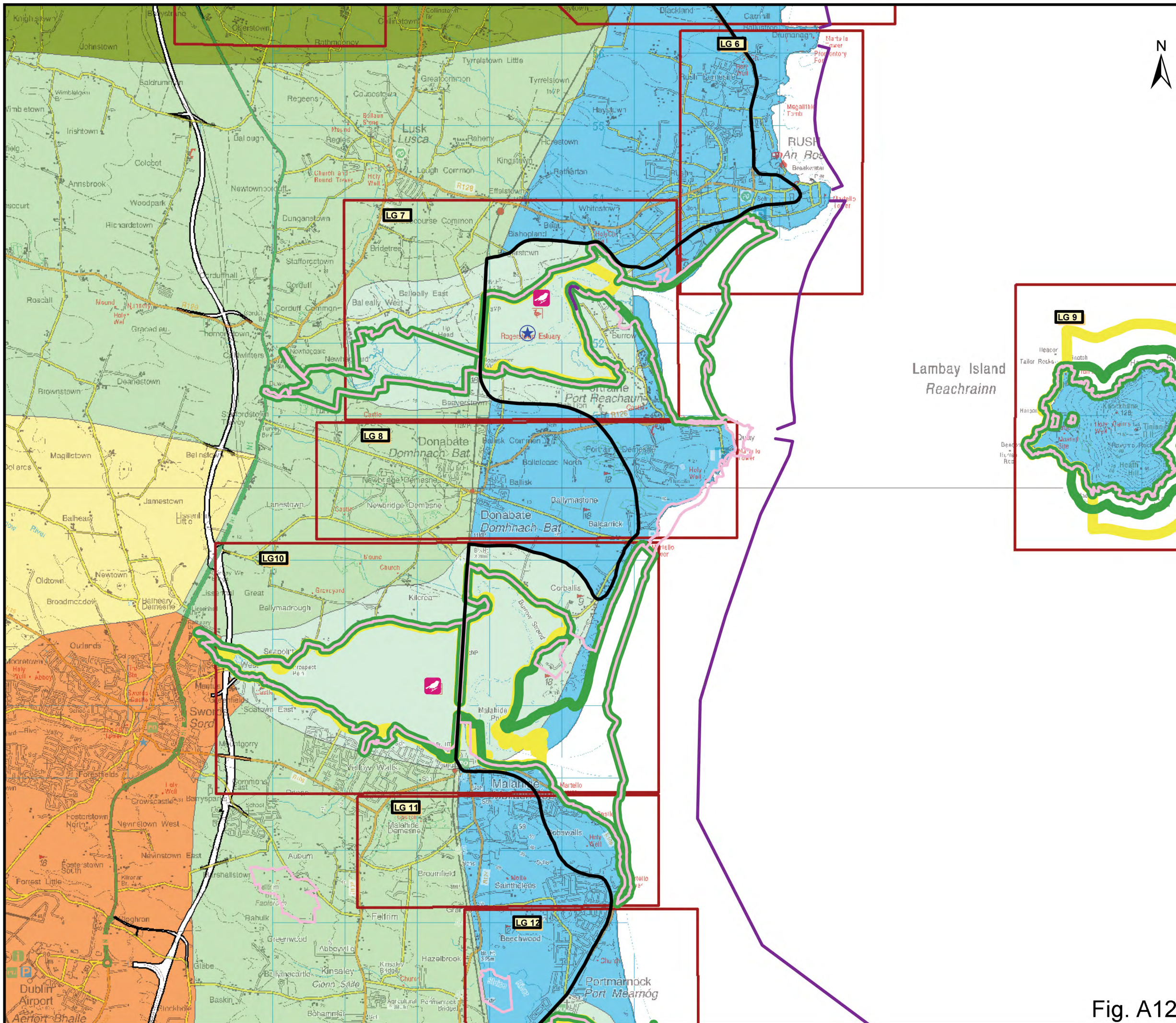
Fig. A11

LEGEND

-  Ramsar Convention Wetland
-  Statutory Nature Reserves
-  Refuge for Fauna
-  Coastal Corridor
-  Visual Compartment
-  Proposed Natural Heritage Areas
-  Candidate Special Areas of Conservation
-  Special Protection Areas

Landscape Character Areas

-  Landscape Groups
-  Coastal
-  Estuary
-  Airport and Swords
-  High Lying Agricultural
-  Low Lying Agricultural
-  River Valleys/Canal
-  Rolling Hills with Tree Belts



Scale: 1:50,000

Sean O Faircheallaigh, BComm, MA, DipTP, DipUD, DipEIAMgmt, MIP
SENIOR PLANNER

David O'Connor, Dipl. Arch, MUBC, FRIAI
DIRECTOR OF SERVICES

Fig. A12