

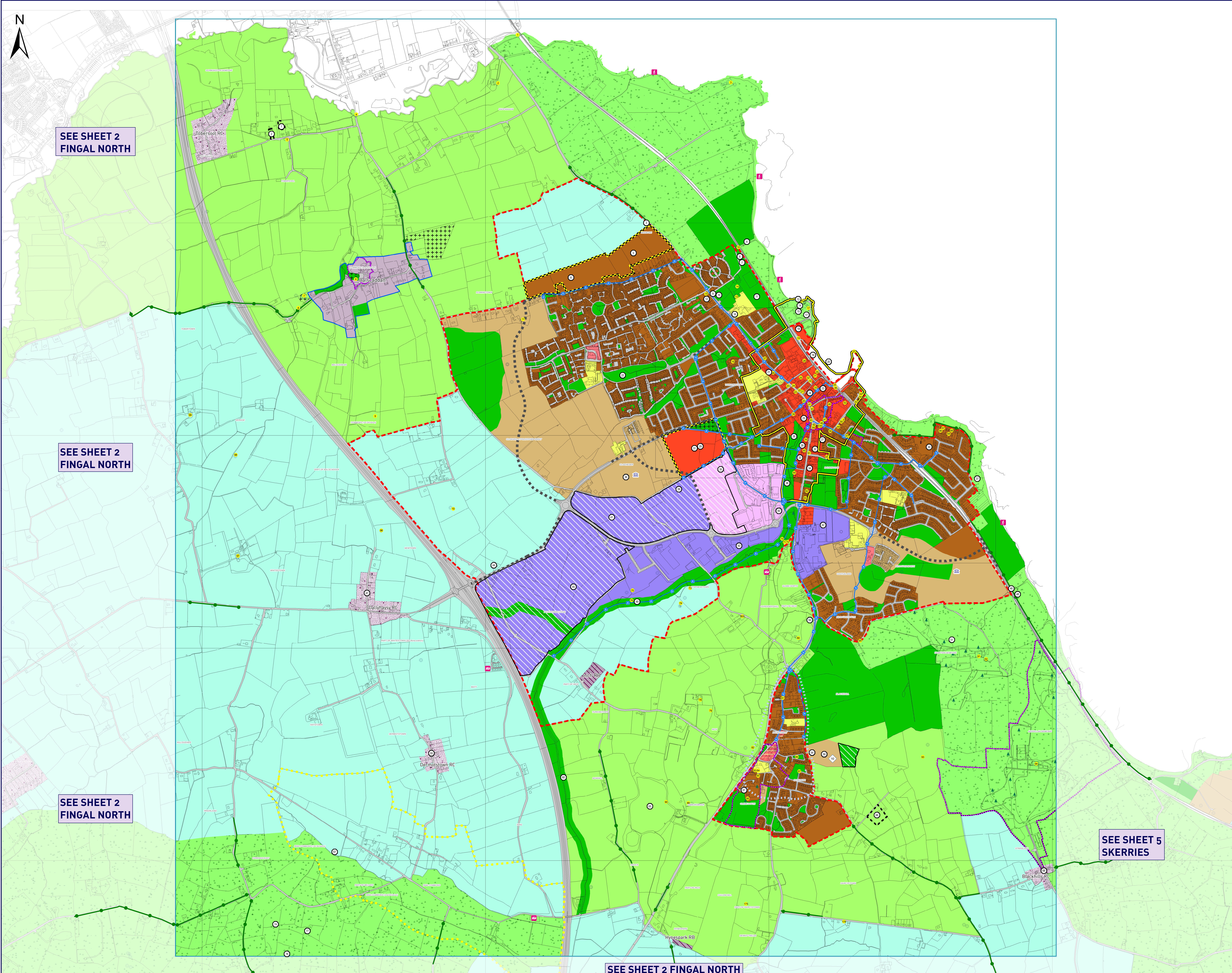
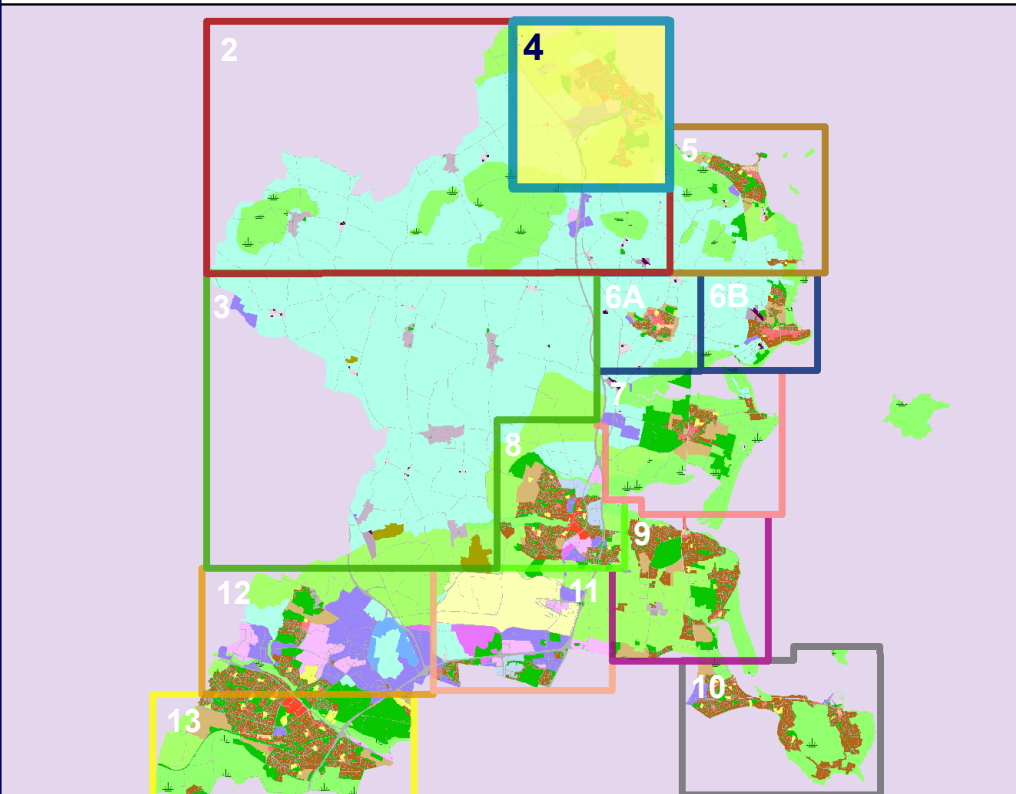
Zoning Objectives

- Objective CI Provide for and protect civic, religious, community, education, health care and social infrastructure
- Objective GB Protect and provide for a Greenbelt
- Objective GE Provide opportunities for general enterprise and employment
- Objective HA Protect and enhance high amenity areas
- Objective HT Provide for office, research and development and high technology/high technology manufacturing type employment in a high quality built and landscaped environment
- Objective LC Protect, provide for and/or improve local centre facilities
- Objective MC Protect, provide for and/or improve major town centre facilities
- Objective OS Preserve and provide for open space and recreational amenities
- Objective RA Provide for new residential communities in accordance with approved local area plans and subject to the provision of the necessary social and physical infrastructure
- Objective RB Provide for and facilitate rural-related business which has a demonstrated need for a rural location
- Objective RC Provide for small scale infill development serving local needs while maintaining the rural nature of the cluster
- Objective RS Provide for residential development and protect and improve residential amenity
- Objective RU Protect and promote in a balanced way, the development of agriculture and rural-related enterprise, biodiversity, the rural landscape, and the built and cultural heritage
- Objective RV Protect and promote the character of the Rural Village and promote a vibrant community in accordance with an approved local area plan, and the availability of physical and community infrastructure
- Objective TC Protect and enhance the special physical and social character of town and district centres and provide and/or improve urban facilities

Specific Objectives

- Protect and/or provide for a Burial Ground
- Subject to Local Area Plan
- Public Realm Plan Area (See Local Objective 25)
- Architectural Conservation Area
- Development Boundary
- Indicative Cycle/Pedestrian Route
- Road Proposal
- Preserve Views
- Site Specific Objective Boundary
- Masterplan Area
- Zone of Archaeological Potential
- Urban Centre Strategy/Study Area
- Coastal walk
- Provide for residential development at a density per hectare as shown
- Proposed School
- Provide for Traveller Accommodation
- Protect & preserve trees, woodlands and hedgerows
- Protected Structure
- Recorded Monument
- Local Objective

Note:
For further detail please refer to the Written Statement and/or Appendices and Green Infrastructure Maps



SEE SHEET 2
FINGAL NORTH

SEE SHEET 2
FINGAL NORTH

SEE SHEET 2
FINGAL NORTH

SEE SHEET 5
SKERRIES

SEE SHEET 2 FINGAL NORTH