

## LEADER:

Liaison Entre Actions de Développement de l'Economie Rurale

*'Links between the rural economy and development actions'*



Comhairle Contae  
Fhine Gall  
Fingal County  
Council



Dublin Rural  
**LEADER**  
*Growth, Sustainability & Inclusion*



# Dublin Rural LAG Sub-Committee:

## Fingal LEADER LDS Strategy '14 - '22

### Workshop

Thursday 14<sup>th</sup> January 2016  
10.00am - 12.45pm,  
Chamber, County Hall, Swords.

# AGENDA

1. Introduction & Purpose – David Pryor, FCC, Workshop Chair.
2. Fingal LEADER Programme – Overview & Client Survey , Phil Moore, FLP.
3. LEADER - New Governance Structures - Breffni O' Rourke, EE&TD Dept.
4. LDS Strategy (Guidelines & Framework , Key Themes, Action Template) - Bill Thorne, Exodea Europe Consultants Ltd.
5. Facilitated Workshop Reports - Phil Moore, Robert Collins, Nelly & James FLP.
6. Wrap-up - Ed Hearne, Director, EE&TD Dept.



Dublin Rural  
**LEADER**  
*Growth, Sustainability & Inclusion*

# 1. Purpose of Today

- To update, meet and explore areas of potential for future LEADER LDS funding in 2016 + via existing projects (roll over) and new projects.
- To discuss **what should be the Fingal regional strategy** in tandem with the South Dublin and Dún Laoghaire Rathdown areas.
- **Identify the strategic themes and projects** under RDP theme:-
  - In which location?
  - Previous work to be built upon?
  - Who will be the Strategic Partners?
  - Indication of timing - Ready to go, Early development, Advanced, Start-up/feasibility
  - Funding needs



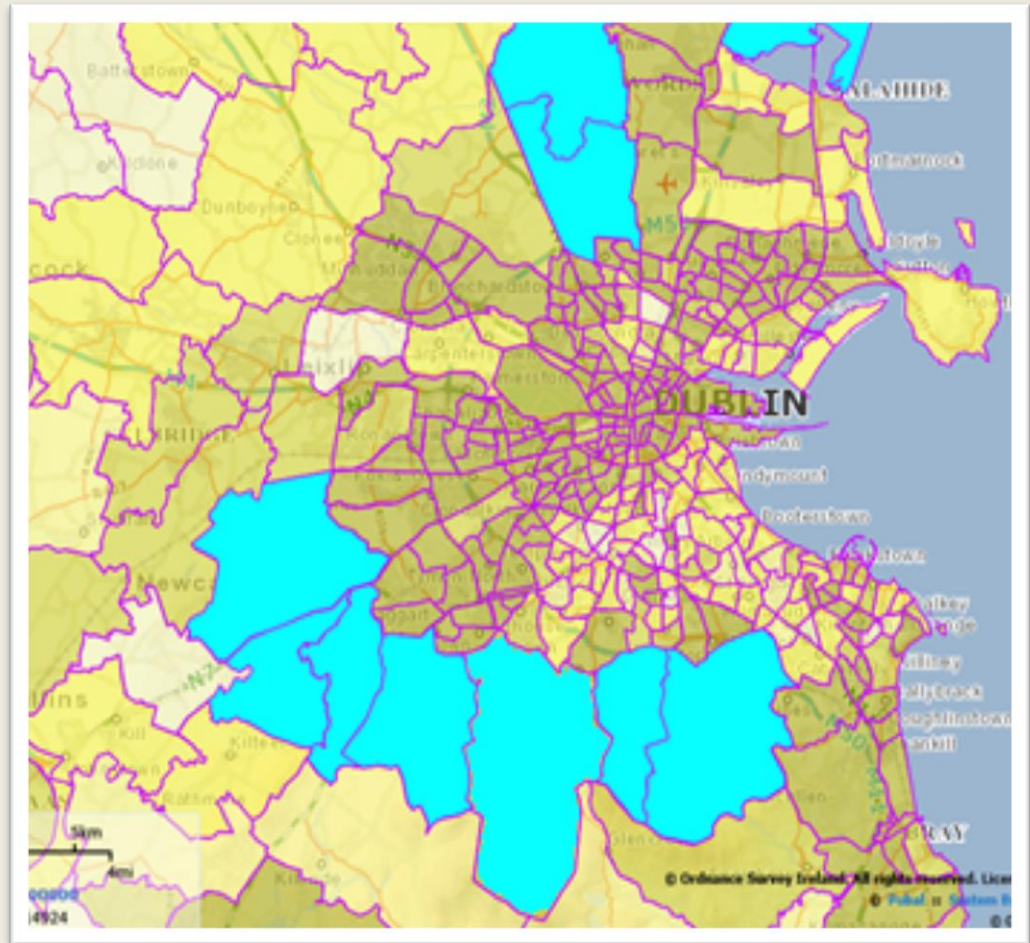
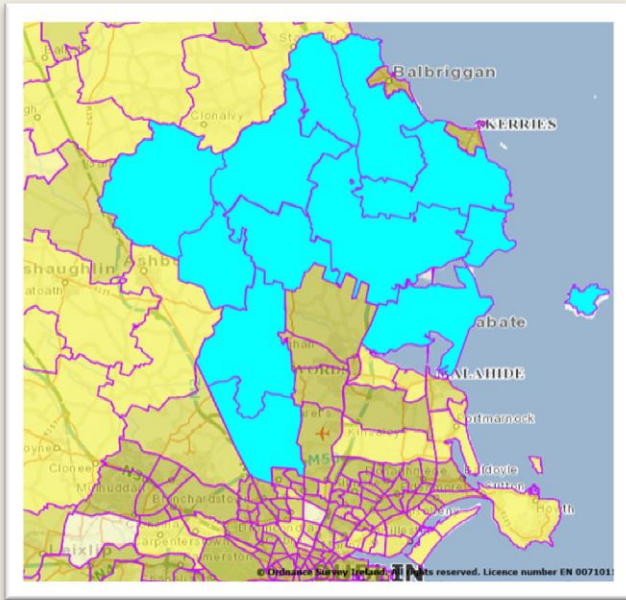
## 2.0 Phil Moore, Fingal LEADER Partnership



## 2.1 LEADER '07- '13: Key Highlights

- Programme Budget €7.78m (revised to €6.4m)
  - First projects processed in June 2009
  - Strong start with a high level of project applications received through EOI's following consultation process
  - Calls for proposals published for key measures throughout the lifetime of the programme (targeted process)
- 
- **Total Projects processed** = 260
  - Projects rejected by LAG = 7
- 
- **Total Programme Spend** = €6.0m
  - Match Funding Generated = €4.5m
  - **Total Revenue Generated** = €10.5m

# 2.2 Dublin Rural LEADER Catchment Area 14-22



## 2.3 Dublin Rural – Fingal Catchment Area

### FINGAL

- Donabate
- Portrane
- Rush
- Lusk
- Loughshinny
- Skerries (Holmpatrick)
- Balrothery
- Balbriggan (Stephenstown, Balscadden)
- Naul
- Garristown
- Oldtown
- Ballyboughal



## Our Vision:

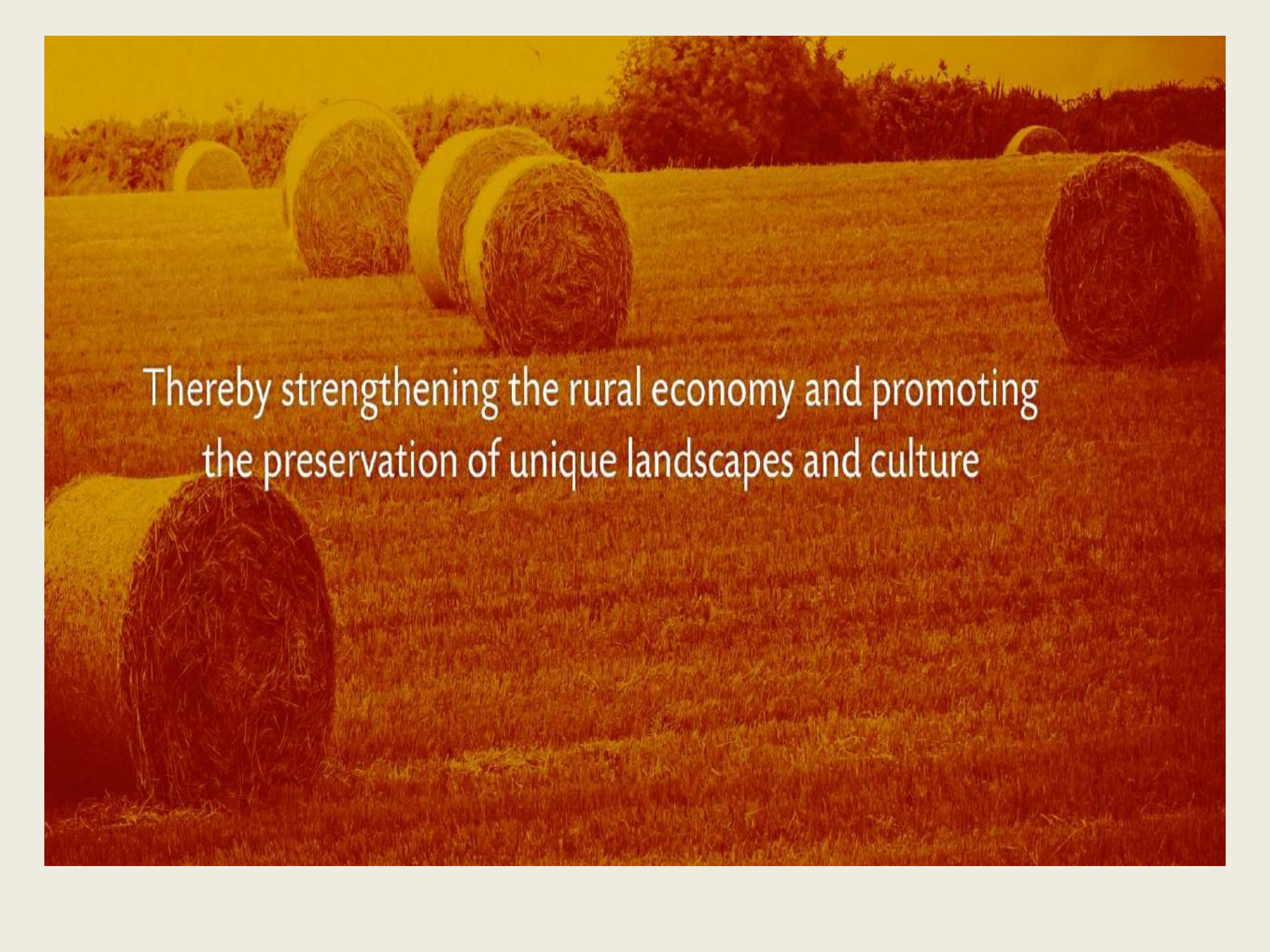
An enhanced and sustainable quality of life for the communities with which we work – both urban and rural





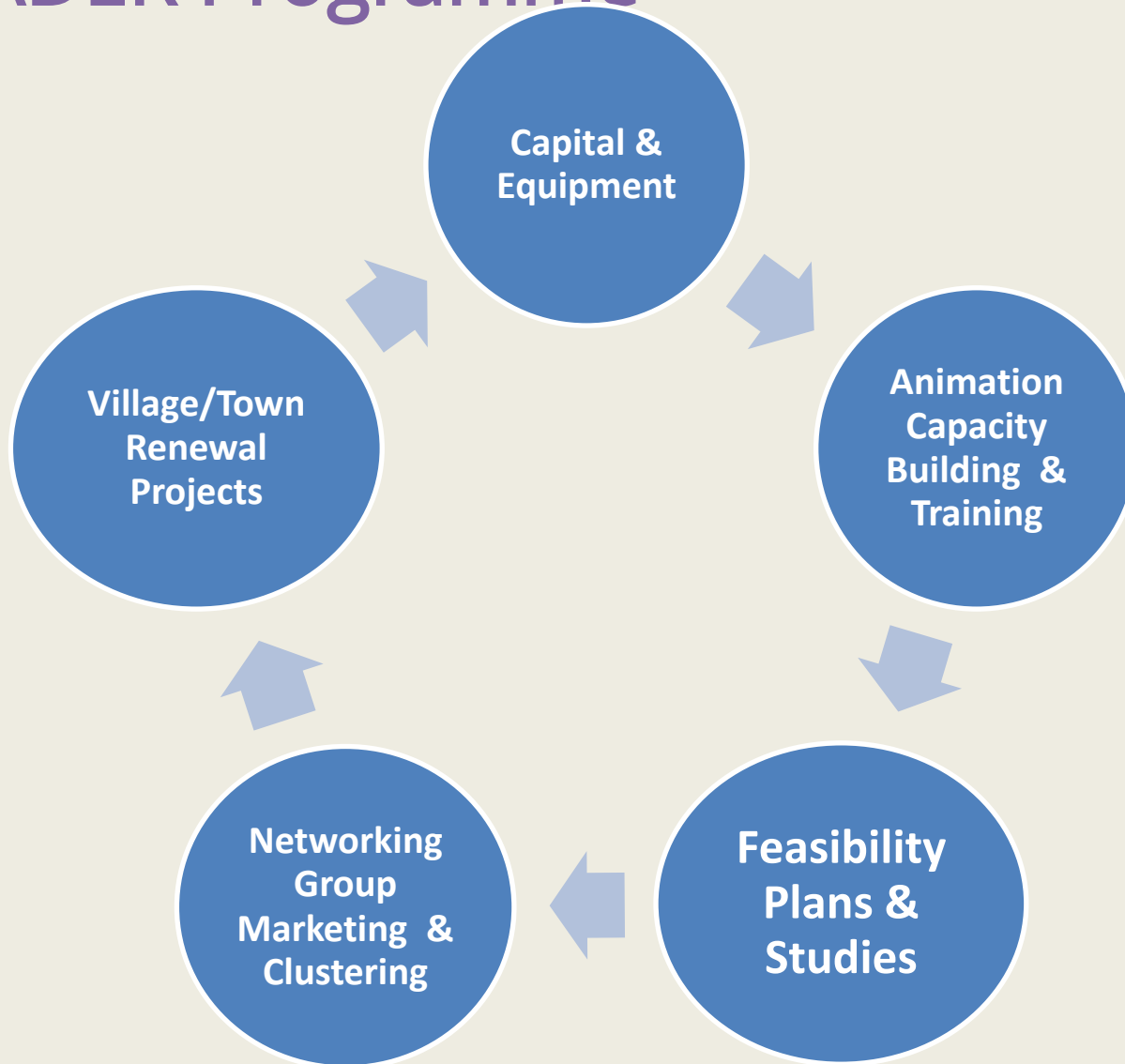
Supporting individuals and groups to develop skills, resources,  
and opportunities that help to create equal and inclusive communities



A photograph of a rural landscape featuring several large, round hay bales scattered across a field of golden grass. The scene is bathed in a warm, orange-gold light, suggesting a sunset or sunrise. In the background, there are trees and a line of crops. The overall mood is peaceful and agricultural.

Thereby strengthening the rural economy and promoting  
the preservation of unique landscapes and culture

## 2.7 Types of Funding Supports offered by the LEADER Programme



## 2.8 LEADER Survey 2015 -Draft Client Findings

- 205+ Surveys completed to 31 Dec '15;
- 10 Community Consultation events held
- Fingal 5: South Dublin County 2: Dun Laoghaire Rathdown 3:
- Focus Group Meetings = 2
- Recorded Attendance ranged from 3 to 25 - Average 15 Attendees
- (total attendance = 125)
- Targeted consultation by Post = 75.
- Social Media accessibility also used.
- Future completion of calls for new EOI's, post LDS strategy finalisation / Contract (March 2016)



## 2.9 LEADER Consultations - Potential Projects via Community Consultation

- Recreational Space, Parks & Playgrounds
- Community centre provision & upgrade
- Rural youth facility/youth café
- Training Programmes for targeted sectors
- Information points in villages (re service provision)
- New tourism products
- Community Crime Study for Rural Dublin region
- Historic Graveyards Project
- Men's Shed
- Rural Dublin Broadband Audit
- Corduff Science & Innovation Centre
- Village Impact statements
- Heritage trails
- Heritage site promotion & development (many listed).



Dublin Rural  
**LEADER**  
*Growth, Sustainability & Inclusion*

## 2.10 Social Inclusion – Key Comments

- Lack of Community infrastructure
- Lack of Youth facilities / Services
- Poor Supports for Seniors
- Poor Rural Transport Provision
- Access to Training & Capacity Building for volunteers
- Lack of Text Alert/Crime Prevention initiatives
- Need for 'One-stop-shop' for information.

## 2.11 Economic & Business Supports

- Lack of adequate enterprise space
- Lack of incubation units for start-up's
- Poor or no internet/broadband access
- Lack of access to training & mentoring for SME's
- Provision of marketing tools & supports for SME's
- New Tourism Product Development
- Marketing & Promotion of key Heritage sites

## 2.12 Rural Environment

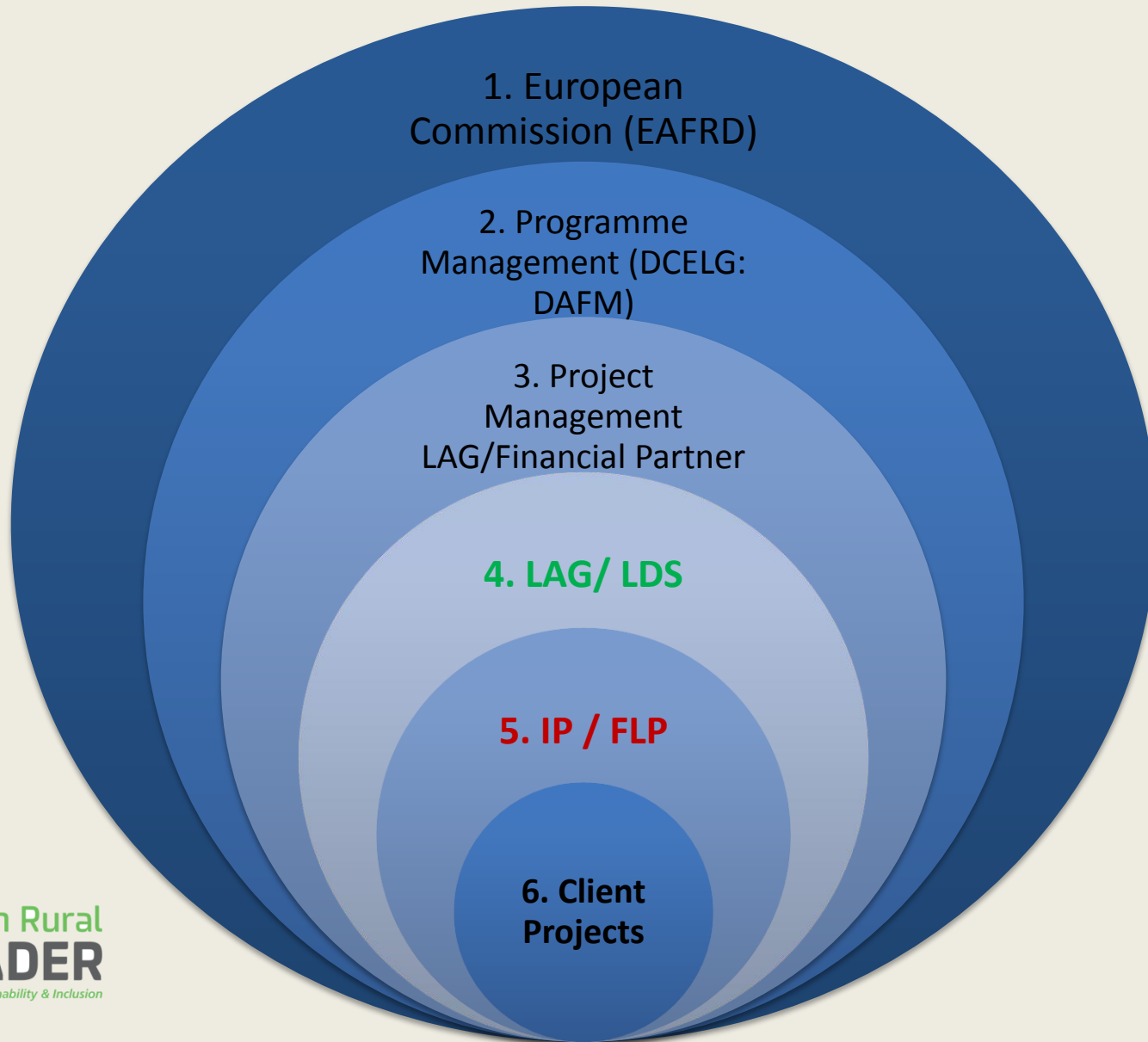
- Lack of community awareness towards the protection of habitats, environment and landscape
- Educational programme on biodiversity/climate change
- Renewable energy products and education

## 2.13 LEADER '07-'13: Lessons Learned!

- *Process was labour intensive and requires stream-lining*
- *A “Guide Book” for applicants/promoters required*
- *Forum for pre-evaluation of projects would be useful*
- *Cohesive approach to Project development between agencies e.g. Local Authority departments etc*
- *Strict limit on Project time-extensions (max 3 months) required*
- *Training for LAG members, Sub-committee members and staff on the Operational Rules of the Programme to ensure all understand the regulations both National and European as applies to LEADER.*
- *Training in Public Procurement Procedures for staff and LAG*



# 3.0 LEADER (2014-2020) Programme

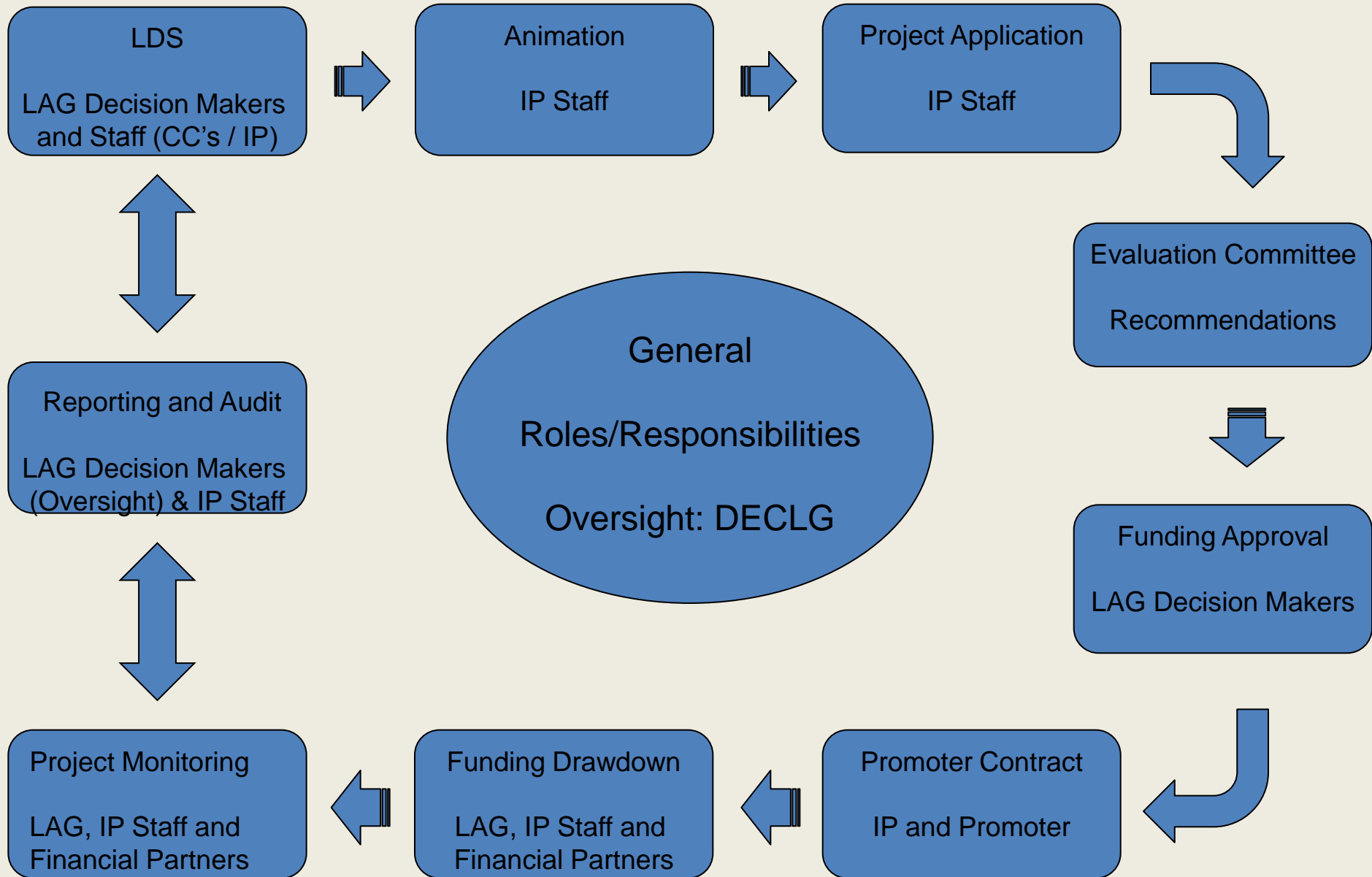


# 3.1 LEADER '14 - '20: So What's Different?

## The Primacy of the LAG!



# 3.2 Local Dev Strategy Project Flow



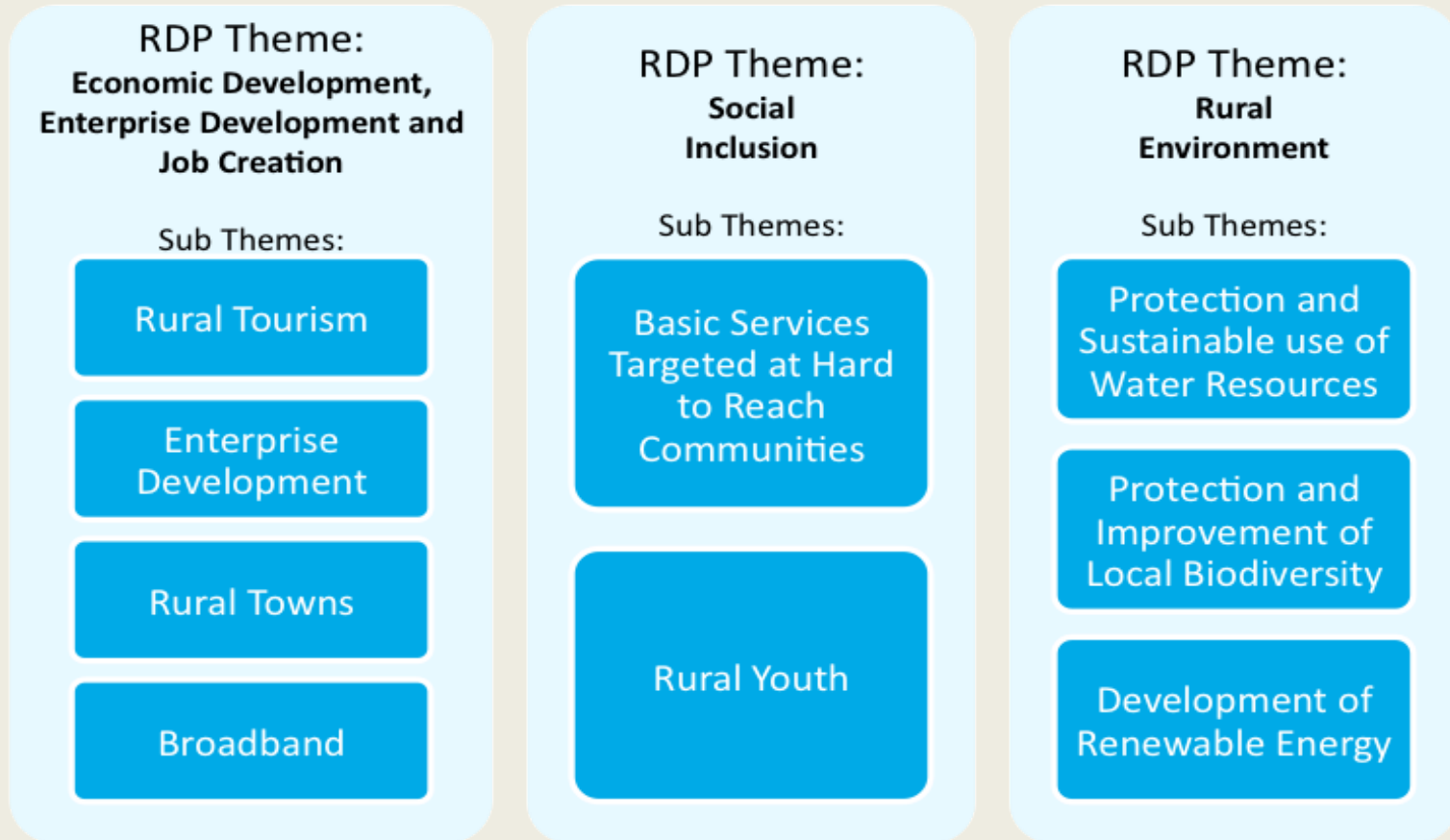
## 3.3 LAG Governance - Key Points

- Local Government Reform Act (2014) set a new role for Local Authorities positioning it as the key driver of local economic & community development.
- Establishment of the Dublin Rural Local Action Group (LAG) & appointment of Fingal County Council as the Financial authority.
- LAG receives, assesses, selects and fixes the amount of support.
- LAG to monitor the implementation of the community led LDS ,the projects supported, carrying out evaluation activities linked to strategy.
- LAG to facilitate good governance; transparency; sound financial management; informed decision making and Accountability to stakeholders.



Dublin Rural  
**LEADER**  
*Growth, Sustainability & Inclusion*

# 4. 0 LDS Guidelines - Framework





# 4.1 Fingal LDS Action Framework - Template

## Action Framework – Theme 1: Economic, Enterprise & Job Creation

<b>Title of Local Objective</b>	LO1				
<b>LEADER Theme</b>	Economic and Enterprise Development and Job Creation				
<b>LEADER Sub-Theme</b>	1.1. Rural Tourism				
<b>Rationale for the Objective</b>					
<b>Link to the LECP</b>	Dún Laoghaire Rathdown LECP, Fingal LECP, South Dublin LECP				
<b>Financial Allocation</b>					
<b>No. of Strategic Actions</b>					
<b>Code</b>	LO1:SA1				
<b>Title of Strategic Action</b>					
<b>Brief Description of Strategic Action</b>					
<b>Link to LECP</b>					
<b>Primary Target Group(s)</b>					
<b>Geographic Area</b>					
<b>Organisation who will deliver the action</b>					
<b>Collaborating Organisations</b>					
<b>Timeframe of Delivery of the Action</b>					
<b>Anticipated Outputs/Indications and Targets</b>					
<b>Number of Projects</b>					
<b>New</b>					
<b>Existing</b>					
<b>Sustained Jobs</b>					
<b>Projected Jobs</b>					
<b>Type of Initiative</b>					
<b>Total Capital</b>					
<b>LEADER Funding</b>					
<b>Match Funding</b>					
<b>Cost per job</b>					
<b>Visitor Numbers</b>					



## 5.0 CONSULTATION WORKSHOP

### **The LEADER Approach ( 7 Features/Specificities)**

- 1. Area based local development strategies**
- 2. Bottom up approach**
- 3. Public – Private Partnerships – the LAG**
- 4. Innovation**
- 5. Integrated and multi-sectoral actions**
- 6. Networking**
- 7. Co-operation**

Keep in mind for your discussion



## 5.1 Facilitated Workshop

Break-up into 3 groups under the subtheme headings; - **Social**, Economic & **Biodiversity**

### Consider:-

- What can we do in which location?
- What existing work can we build upon?
- Who will be the strategic partners?
- Timing
- Indicative scale (Pre start-up, Start-up, 2<sup>nd</sup> / 3<sup>rd</sup> phase development, Very advanced).



Dublin Rural  
**LEADER**  
*Growth, Sustainability & Inclusion*

# 6.0 Working Group: Feedback Sessions

- Phil Moore: Theme 1. **Social**
- Robert Collins: Theme 2. **Economic**
- Nelli & James: Theme 3. **Biodiversity**

Priority projects	In which location	What previous work can be built on	Who will be the strategic partners
Project 1			
Project 2			
Project 3			

